

**Title 11: Mississippi Department of Environmental Quality
Part 6: Wastewater Pollution Control Regulations
Part 6, Chapter 9: Mississippi Commission on Environmental Quality,
Mississippi 2014 Section 303(d) List of Impaired Water Bodies**

FINAL LIST Version 5.0 For Commission Approval

Prepared by
MISSISSIPPI DEPARTMENT OF ENVIRONMENTAL QUALITY
SURFACE WATER DIVISION OF THE OFFICE OF POLLUTION CONTROL



Mississippi 2014 Section 303(d) List of Impaired Water Bodies

The fonts used in this document are ink saving fonts based on Inkfarm.com ink-usage calculator. Century Schoolbook was selected for the body text. Eras Medium ITC was used for subheadings, and Goudy Old Style was used for headings.

Table of Contents

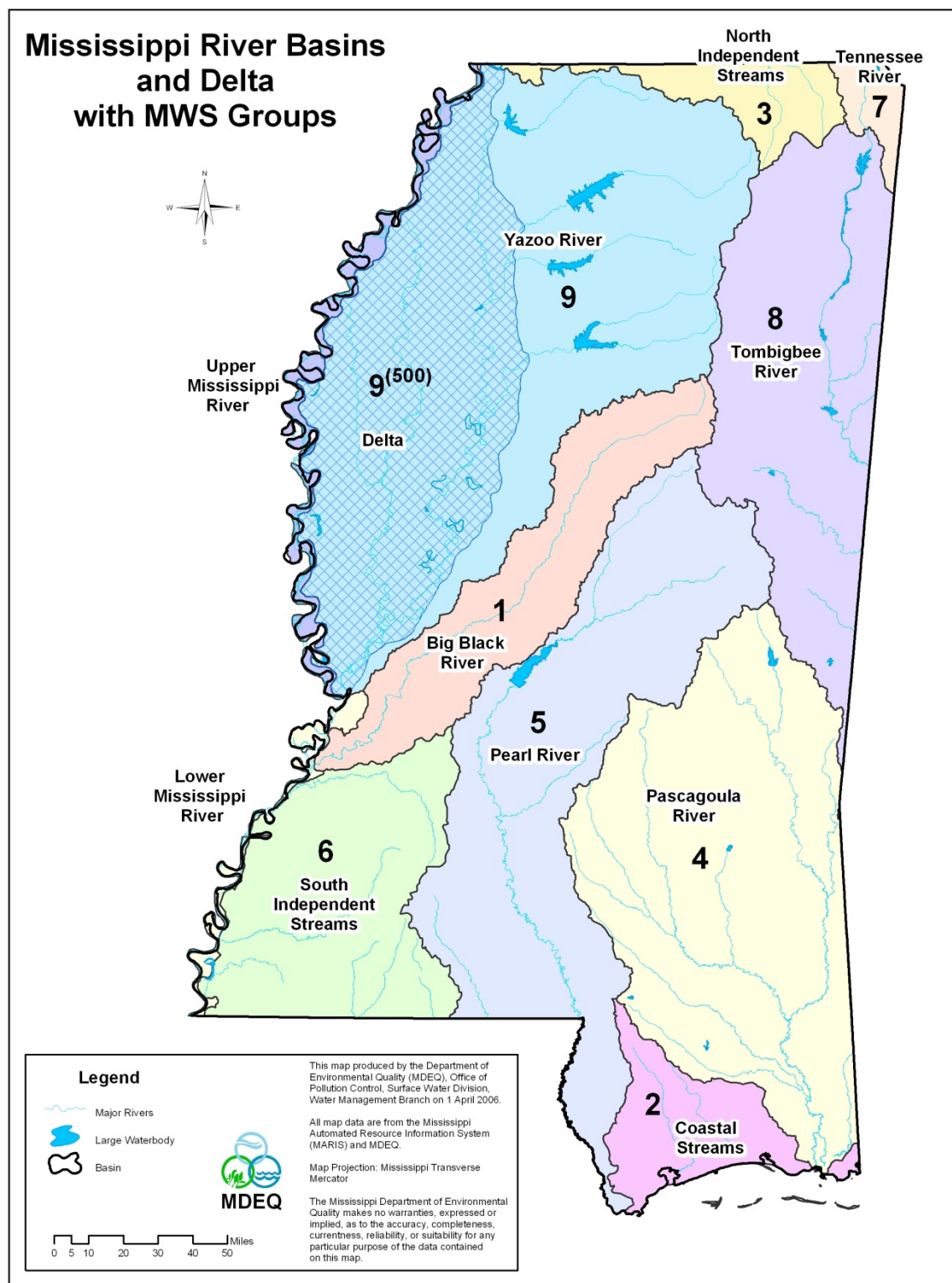
RULE 9.1 INTRODUCTION	5
RULE 9.2 REGULATORY REQUIREMENT	5
RULE 9.3 ASSESSMENT METHODOLOGY	5
A. CONSOLIDATED ASSESSMENT LISTING METHODOLOGY (CALM)	5
B. DESIGNATED USES	6
C. WATER QUALITY STANDARDS	6
D. ASSESSMENT CATEGORIES	7
E. MONITORING DATA	7
RULE 9.4 FISH AND SHELLFISH CONSUMPTION ADVISORIES AND IMPAIRED WATERS	8
RULE 9.5 LAYOUT OF THE TABLES	8
A. STREAM LISTINGS	8
B. POLLUTANTS INCLUDED	9
C. POLLUTANT SOURCE	9
D. TMDL DUE DATE	9
E. CHANGES MADE FOR 2014	9
RULE 9.6 WATER BODY IDENTIFICATION NUMBERS	10
A. HISTORICAL NUMBERING SYSTEM	10
B. EXCEPTIONS TO THE HISTORICAL NUMBERING SYSTEM	10
C. INTERMEDIATE NUMBERING SYSTEM	10
D. CURRENT NUMBERING SYSTEM	10
E. BASIN MAPS	11
RULE 9.7 TMDLS SCHEDULED FOR THE NEXT TWO YEARS	11
A. TABLE 1 TMDLS SCHEDULED FOR 2014 AND 2015	12
RULE 9.8 PUBLIC PARTICIPATION AND APPROVAL PROCESS	14
RULE 9.9 TABLE 2 IMPAIRED WATERS LISTING	15
RULE 9.10 TABLE 3 CHANGES MADE SINCE THE 2012 LIST	32

REFERENCES

35

APPENDIX A ATLAS

36



RULE 9.1 INTRODUCTION

Mississippi's 2014 Section 303(d) List of Impaired Water Bodies fulfills the state's obligation with respect to §303(d) of the Federal Clean Water Act to develop a listing of the state's impaired waters. MDEQ provides two reports, this §303(d) list and a §305(b) report. These are not physically integrated, but the lists are meant to have a one-to-one relationship in that all of the water body segments found in the §305(b) report listed in category 5 are also listed in this document. This §303(d) document includes tables showing the impaired water bodies in each of the state's river basins. These basins are shown on the map on page 4.

1. Big Black River Basin
2. Coastal Streams Basin
3. North Independent Streams Basin
4. Pascagoula River Basin
5. Pearl River Basin
6. South Independent Streams and Lower Mississippi River Basins
7. Tennessee River Basin
8. Tombigbee River Basin
9. Yazoo River and Upper Mississippi River Basins

RULE 9.2 REGULATORY REQUIREMENT

Section 303(d) of the Clean Water Act and the implementing federal regulations at 40 C.F.R. §130.7 require the state to identify those waters within its jurisdiction for which effluent limitations are not sufficient to implement one or more applicable water quality standards and for which TMDLs are not yet completed. The state is to establish a priority ranking for such waters, taking into account the severity of the pollution and the designated uses to be made of such waters.

RULE 9.3 ASSESSMENT METHODOLOGY

A. Consolidated Assessment Listing Methodology (CALM)

All data used to make formal assessments of the quality of the state's waters, regardless of its source, are evaluated in keeping with the requirements and guidelines in the state's *Mississippi CALM [Consolidated Assessment Listing Methodology] for 2014*, [CALM] (MDEQ, 2013). Monitoring data and information that may be considered when assessing state waters could include chemical, physical, bacteriological, toxicological, and/or biological (e.g., macroinvertebrate, fish, and algal community measurements) data. In addition to using MDEQ-generated data, MDEQ solicits and considers all readily available data and information within the assessment window collected by other Federal, State, local agencies/organizations,

and the public. This data solicitation effort is facilitated through MDEQ's Basin Management Approach.

B. Designated Uses

The water quality assessment process begins with the collection and compilation of the available data followed by the analysis of water quality data and information for the purpose of determining the quality of the state's surface water resources. Surface waters in Mississippi are used for a number of purposes. Waters are used for drinking and food processing, shellfishing, recreation, fishing, and aquatic life use support (ALUS). Water bodies are designated and assigned various use classifications by MDEQ in the state's Water Quality Standards (11 Miss. Admin. Code Pt. 6, Ch. 2) {WQS}. This designation is made based on the use(s) of the water body as identified by the public and other entities. The use classifications and associated USEPA designated uses for water quality assessment purposes recognized by the State of Mississippi are as follows:

Use Classification	USEPA Associated Designated Use
Public Water Supply	Drinking Water Supply
Recreation	Contact Recreation
Fish and Wildlife	Aquatic Life Use, Fish Consumption, Secondary Contact Recreation
Shellfish Harvesting	Shellfish Consumption

C. Water Quality Standards

Most of Mississippi's waters are classified as Fish and Wildlife. For each of the use classifications listed above, there are various water quality criteria that apply to those water body uses. These standards are used in the assessment process. A water body (part or all of a stream, river, lake, estuary or coastline) should support one or more of these uses. The 2014 CALM and the WQS can be found online at

[http://www.deq.state.ms.us/MDEQ.nsf/page/TWB Total Maximum Daily Load Section?OpenDocument](http://www.deq.state.ms.us/MDEQ.nsf/page/TWB%20Total%20Maximum%20Daily%20Load%20Section?OpenDocument)

Mississippi's WQS specify the appropriate levels for which various water quality parameters or indicators support a water body's designated use(s). Each use assessed for a water body is determined to be either "Attaining" or "Not Attaining" in accordance with the applicable water quality standards and EPA guidelines for assessments pursuant to §305(b).

D. Assessment Categories

After assessing attainment status of the water body's designated use(s), each water body is assigned to an assessment unit that defines the length of the reach assessed and is placed into one of five assessment categories as per EPA guidance. These categories are summarized below

Assessment Categories	Definitions of Categories
Category 1	Attaining all uses
Category 2	Attaining some uses but there is insufficient data to determine if remaining designated uses are met
Category 3	Insufficient data to determine whether any designated uses are met
Category 4	Not attaining a use but a TMDL is not needed
4A	- TMDL has been completed
4B	- other required control measures will result in attainment of WQS
4C	- impairment or threat not caused by a pollutant
Category 5	Not attaining a use and a TMDL is needed

The §303(d) list includes streams that are impaired that do not have the completed TMDL. Once the TMDL is completed, but prior to the stream being restored, MDEQ modifies the assessment category of the stream. An impaired stream without a TMDL is assessed in category 5. A stream with a TMDL, but still impaired, is assessed in category 4A. The §303(d) lists all of the category 5 waters. For a listing of the waters in category 4A, please visit the TMDL website at:

http://www.deq.state.ms.us/MDEQ.nsf/page/TWB_Total_Maximum_Daily_Load_Section?OpenDocument

E. Monitoring Data

Assessments for 2014 are based on current site-specific monitoring data believed to accurately portray existing water quality conditions. A water body is considered monitored if sufficient (in quantity, quality, and frequency) physical, chemical, biological, bacteriological, and/or fish tissue data were collected and assessed on the water body data from January 1, 2008 to December 31, 2012.

Physical and chemical data include such parameters as pH, temperature, dissolved oxygen, toxicants, turbidity, total dissolved solids (TDS), and specific conductance. Biological data include the community structure of aquatic insects, other macroinvertebrates, fish, and/or algae. Bacteriological data include water column surveys for fecal coliform bacteria, *E coli*, or enterococci bacteria. Fish tissue data

include the analyses of fish flesh for the presence of toxic organic chemicals and metals. The length of record of the data, the quality of the data, and the frequency at which the data are collected were considered in making use attainment decisions.

For 2014, MDEQ considered all known and readily available information on the quality of the state's waters in conjunction with the rotating basin approach and MDEQ's §305(b) assessment program. However, only data that allowed for the accurate interpretation of the state's water quality standards or provided compelling evidence were used for §303(d) listing decisions.

RULE 9.4 FISH AND SHELLFISH CONSUMPTION ADVISORIES AND IMPAIRED WATERS

Non-attainment of the fish consumption use was assessed for a water body based on the presence of a fish consumption advisory supported by fish tissue monitoring data. Water bodies with fish consumption advisories, "restricted" or "no consumption," were assessed as not attaining the fish consumption use support designation.

Coastal water bodies with the Shellfish designated use that have consumption advisories are not included in the 2014 §303(d) List because these waters already have completed TMDLs for pathogens. These waters have a category 4a in the state's §305b report. These TMDLs are available for review on MDEQ's website.

RULE 9.5 LAYOUT OF THE TABLES

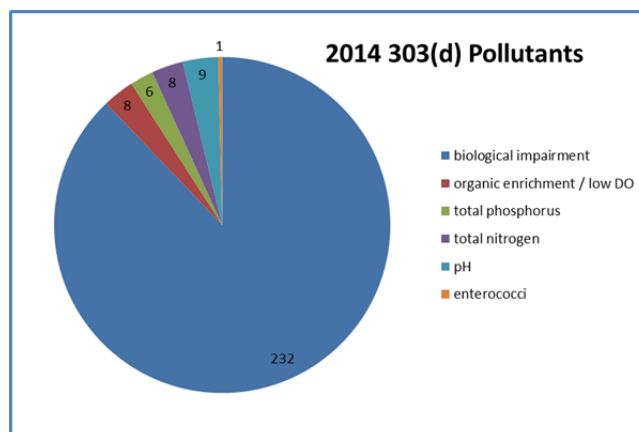
A. Stream Listings

The impaired waters in Table 2 are sorted alphabetically by the River Basin then by the water body name. The water body general location is given for the segment including a community located near the water body segment. The extent of the segment is described beginning with the upstream boundary thence to the downstream boundary. The maps of these segments are located in the appendix.

The historical or current water body ID along with the counties the segment is located is included. The impaired use refers to the designated use associated with the pollutant cause shown. In 2014, there is only one designated use included which is Fish & Wildlife. All uses are assessed; however, for 2014 MDEQ did not have any other uses impaired that do not already have completed TMDLs. Therefore, this is the only designated use included for 2014.

B. Pollutants Included

The pollutants are listed specifically for each listing. There are 264 listings for 2014. Biological Impairment is listed 232 times (87.9%). This listing is generated based on assessing the result of our microbiology program M-BISQ. When the water body is scored below the eco-regional value, it is added to the impaired waters list. A



stressor identification process is then used to identify the specific pollutants causing the microbiological impairment. Organic Enrichment, Total Nitrogen, and Total Phosphorus listings are for excessive nutrients or organics which impact the dissolved oxygen and eutrophication in the water body. The pH listings are from water monitoring results which are outside of the normal range for pH. If there are multiple pollutants and/or uses for a water body, these are shown as multiple listings for the water body.

C. Pollutant Source

Due to the nature of the monitoring and listings for 2014, the source of the impairment is generally not known. For the biological listings a stressor identification process is required to identify probable primary stressors. These are generally non-point source issues and source identification is difficult without specific analysis.

D. TMDL Due Date

Table 2 also gives the MDEQ due date for the TMDL and the year the segment was originally included in the §303(d) list. The due date, which is 13 years after initial listing, is determined from EPA guidance. To determine the new listings for 2014, Table 2 includes a column that shows the initial listing for each. All of the new listings this list are labeled 2014.

E. Changes Made For 2014

Table 3 provides the changes proposed for 2014 including all of the completed TMDLs since 2012, the monitored streams that are now fully supporting, and other changes made to the list. In addition, the EPA approval date as well as the federal NTTS TMDL tracking number is provided. The National TMDL Tracking System (NTTS) number is provided by EPA after the TMDL is finalized and approved. This becomes the identification number for that TMDL report.

For a more detailed description of the data and assessment steps taken, please refer to the state's 305b report. This report to Congress reviews all of the data collected and reports results both good and impaired on the states waters.

RULE 9.6 WATER BODY INDENTIFICATION NUMBERS

A. Historical Numbering System

The historical water body identification number for each water body listed contains a reference to the watershed of its location. Mississippi's river basins were divided into 482 watersheds. The specific location of a water body can be found by finding its ID next to a highlighted stream on one of the maps or by comparing the first three numbers in the water body's ID to the watershed numbers shown on the basin maps. For example, MS332S, Skuna River Canal, is located in watershed 332 near Buckhorn. There are a few of these identified segments on the 2014 list.

B. Exceptions to the Historical Numbering System

There are some exceptions within this numbering convention. Namely, when a water body serves as a boundary between two watersheds, the water body is identified by an abbreviation of the water body's name. For example, water body MSBGCHTRM2 is the identification for the Bogue Chitto River.

C. Intermediate Numbering System

In the 2002 and 2004 §303(d) lists, MDEQ used a numbering system based on identification of the river basin and the 11-digit USGS HUC system. This system was updated in 2006 and there are no longer any segments using this numbering approach.

D. Current Numbering System

MDEQ and USGS completed work on the new 12-digit watershed based delineation of Mississippi in 2005. MDEQ incorporated this new delineation into the identification numbering system for water body segments in the states 2006 §305(b) report. This will be used for future §303(d) waters added to the list.

The new delineated subwatersheds are smaller in size than the watersheds used in the 2004 list. Whereas the previous numbering system relied upon the river basins being divided into 482 watersheds, the new numbering system includes 1294 subwatersheds. Each new water body segment in the 2006 and 2008 lists were

identified by a six digit numeric code. This 2014 §303(d) list will use the same numbering system. The first digit identifies which basin contains the water body. The major river basins are numbered 1 through 9 in alphabetical order (1 for the Big Black River Basin, 2 for the Coastal Streams Basin, through 9 for the Yazoo Basin.) [See map on page 4.]

The next three digits in the six digit water body identification number refer to the specific subwatershed within that basin. Each major river basin has the subwatersheds it contains numbered beginning with 1 (subwatershed 146 located in the Big Black River Basin would be numbered 1146, subwatershed 74 located in the Pascagoula River Basin would be numbered 4074.) Within the Yazoo River Basin, the subwatersheds located in the Hills region are numbered beginning with 1 and the subwatersheds located in the Mississippi River Delta are numbered beginning with 500. The final two digits in the six digit water body identification number refer to a specific stream segment within the specified subwatershed. For instance, Beaver Creek, water body ID 521413, is stream segment 13 in subwatershed 214 in the Pearl River Basin.

E. Basin Maps

Maps are included in Appendix A for each basin. Streams shown in blue are the impaired stream segments. In some river basins, the maps were split into 8-digit Hydrologic Unit Codes to better fit the page.

RULE 9.7 TMDLs SCHEDULED FOR THE NEXT TWO YEARS

For water body listings added as a result of recent monitoring, MDEQ anticipates developing these TMDLs within 13 years of the original listing. The TMDL projected completion dates given in Table 2 are based on plans developed between MDEQ and EPA for TMDL development for the next two years. These dates are given for information only and are not a commitment by MDEQ of TMDL completion. TMDLs will be prioritized based on the pollutant of concern, the basin plan rotation, and the designated use of the water.

Table 1 below lists the TMDLs MDEQ has planned for development in 2014 and 2015 based on resource availability and water body pollutant combinations. These TMDLs are also relying on completion of stressor identifications on the biological listings included.

A. Table 1 TMDLs Scheduled for 2014 and 2015

Basin	Water Body Name	Water Body ID	County	Pollutant
Big Black River	Big Black River	107811	Yazoo, Madison, Hinds, Warren	pH
Big Black River	Jims Bayou	109311	Warren	Biological Impairment
Big Black River	Willis Creek	109511	Warren	Biological Impairment
Coastal Streams	Bayou Cumbest	200311	Jackson	Organic Enrichment / Low Dissolved Oxygen
Coastal Streams	Gulfpark Estates Beach	250411	Jackson	Enterococci
Coastal Streams	Gulfpark Estates Beach	250411	Jackson	Total Nitrogen
Pascagoula River	Tallahala Creek	MS087T	Jones	Biological Impairment
Pascagoula River	Tallahala Creek	415511	Jones, Perry, Forrest	Total Nitrogen
Pascagoula River	Tallahala Creek	415511	Jones, Perry, Forrest	Total Phosphorus
Pearl River	Bogue Chitto River	MSBGCHT RM2	Lincoln, Pike	Biological Impairment
Pearl River	Owl Creek	501111	Kemper	Biological Impairment
Pearl River	Sugar Bogue	507612	Scott	Biological Impairment
Pearl River	Town Creek	503211	Leake	Biological Impairment
Pearl River	Turtle Skin Creek	520511	Hancock	Biological Impairment
South Independent Streams	Bayou Pierre	602812	Claiborne	pH
South Independent Streams	Cars Creek	612112	Amite	Biological Impairment
South Independent Streams	Saint Cathrines Creek	600611	Adams	Biological Impairment

Mississippi 2014 Section 303(d) List of Impaired Water Bodies

South Independent Streams	Storm Creek	602811	Claiborne	Biological Impairment
Tennessee River	Little Cripple Deer Creek	701412	Tishomingo	Biological Impairment
Tombigbee River	Browning Creek	812913	Oktibbeha, Noxubee	Biological Impairment
Tombigbee River	Buttahatchee River	806711	Monroe	pH
Tombigbee River	Chinchahoma Creek	812811	Oktibbeha	Biological Impairment
Tombigbee River	Cooper Creek	809913	Lowndes	Biological Impairment
Tombigbee River	Long Branch	808512	Oktibbeha	Biological Impairment
Tombigbee River	Luxapallila Creek	821611	Lowndes	pH
Tombigbee River	Moore Creek	819611	Lowndes	Biological Impairment
Tombigbee River	Oak Slush Creek	819612	Lowndes	Biological Impairment
Tombigbee River	Rock Creek	800211	Tishomingo, Prentiss	Biological Impairment
Tombigbee River	Shaw Creek	812313	Oktibbeha	Biological Impairment
Tombigbee River	Shotbag Creek	813012	Lowndes, Noxubee	Biological Impairment
Tombigbee River	Spring Creek	809312	Clay	Biological Impairment
Tombigbee River	Town Creek	808912	Clay	Biological Impairment
Tombigbee River	Town Creek	MS011T	Monroe	Biological Impairment
Tombigbee River	Town Creek	820211	Monroe	pH
Tombigbee River	Unnamed Tributary To Catalpa Creek	809012	Clay	Biological Impairment
Tombigbee River	Unnamed Tributary To Gilmer Creek	810412	Lowndes	Biological Impairment
Tombigbee River	Wet Water Creek	813812	Noxubee	Biological Impairment
Tombigbee River	Yellow Creek	813211	Winston, Noxubee	Biological Impairment

Mississippi 2014 Section 303(d) List of Impaired Water Bodies

Yazoo River	Bear Bayou	951412	Sunflower	Organic Enrichment / Low Dissolved Oxygen
Yazoo River	Beaver Bayou	951212	Sunflower	Organic Enrichment / Low Dissolved Oxygen

RULE 9.8 PUBLIC PARTICIPATION AND APPROVAL PROCESS

MDEQ notified the public of the availability of this document by publishing a Public Notice in a statewide newspaper as well as selected regional newspapers. Additionally, MDEQ sent notices of availability to those addressees on the TMDL notification list.

The public was invited to comment on the content of this document. The Public Notice period began on March 10, 2014 and went until April 10, 2014. Comments were requested by mail or electronic submission and in person at a Public Hearing held in MDEQ's offices on April 10, 2014. This proposed document will be submitted to the Mississippi Commission on Environmental Quality for adoption. Once adopted by the Commission, the 2014 §303(d) List will be submitted to EPA Region 4 for final approval, and then the Mississippi 2014 §303(d) List of Impaired Water Bodies will be filed with the Mississippi Secretary of State in compliance with state law.

RULE 9.9 TABLE 2 IMPAIRED WATERS LISTING

Basin	Water Body Name	Water Body ID	County	Impaired Use	Pollutant	TMDL Due Date	Location	First List
Big Black River	Bear Creek	107711	Warren	Fish & Wildlife	Biological Impairment	4/1/25	Near Youngton from Rawhide Road to mouth at Big Black River	2012
Big Black River	Beaver Creek	107411	Yazoo	Fish & Wildlife	Biological Impairment	6/23/24	From headwaters to mouth at Big Black River	2010
Big Black River	Big Black River	100111	Webster, Choctaw	Fish & Wildlife	Biological Impairment	4/17/20	Near Mathiston from headwaters to MWS 1003 boundary	2006
Big Black River	Big Black River	107811	Yazoo, Madison, Hinds, Warren	Fish & Wildlife	pH	4/1/25	From confluence with Bear Creek to confluence with Clear Creek	2012
Big Black River	Big Cypress Creek	104812	Holmes	Fish & Wildlife	Biological Impairment	4/1/25	Near Franklin from headwaters to confluence with unnamed intermittent tributary downstream of Hwy 17 bridge	2012
Big Black River	Big Sand Creek	108311	Hinds, Claiborne	Fish & Wildlife	Biological Impairment	6/23/24	From headwaters to mouth at Big Black River	2010
Big Black River	Fivemile Creek	108211	Hinds	Fish & Wildlife	Biological Impairment	6/23/24	From headwaters to mouth at Big Black River	2010
Big Black River	Fleetwood Creek	109113	Hinds	Fish & Wildlife	Biological Impairment	6/23/24	From headwaters to confluence with Bakers Creek	2010
Big Black River	Hamer Bayou	109312	Warren	Fish & Wildlife	Biological Impairment	6/23/24	From headwaters to mouth at Big Black River	2010
Big Black River	Hobuck Creek	105511	Madison	Fish & Wildlife	Biological Impairment	6/23/24	From headwaters to confluence with Doaks Creek	2010
Big Black River	Jims Bayou	109311	Warren	Fish & Wildlife	Biological Impairment	6/23/17	Near Reganton from headwaters to mouth at Big Black River	2002
Big Black River	Jordan Creek	102911	Holmes	Fish & Wildlife	Biological Impairment	4/1/21	Near Hoffman from headwaters to mouth at Big Black River	2008
Big Black River	Little Bear Creek	105712	Madison	Fish & Wildlife	Biological Impairment	4/1/25	At Madison from headwaters to mouth at Bear Creek	2012
Big Black River	Muddy Creek	107912	Warren	Fish & Wildlife	Biological Impairment	6/23/24	From headwaters to confluence with Clear Creek	2010
Big Black River	Pepper / Rucker Creek	104511	Yazoo	Fish & Wildlife	Biological Impairment	4/1/25	Near Canton from headwaters to mouth at Beaver Run	2012

Mississippi 2014 Section 303(d) List of Impaired Water Bodies

Big Black River	Persimmon Creek	106311	Madison	Fish & Wildlife	Biological Impairment	6/23/24	From headwaters to confluence with Big Black River	2010
Big Black River	Porter Creek	107611	Hinds	Fish & Wildlife	Biological Impairment	4/1/25	Near Lynchburg from headwaters to mouth at Big Black River	2012
Big Black River	Rambo Creek	103912	Madison, Leake	Fish & Wildlife	Biological Impairment	6/23/24	From headwaters to confluence with Hinds Creek	2010
Big Black River	Sand Creek	101112	Webster	Fish & Wildlife	Biological Impairment	4/1/21	From headwaters to mouth at Calabrella Creek	2008
Big Black River	Turkey Creek	108711	Hinds	Fish & Wildlife	Biological Impairment	6/23/24	From headwaters to mouth at Fourteen Mile Creek	2010
Big Black River	Unnamed Tributary To Pigeon Roost Creek	100411	Oktibbeha	Fish & Wildlife	Biological Impairment	4/1/21	From headwaters to mouth at Pigeon Roost Creek	2008
Big Black River	Willis Creek	109511	Warren	Fish & Wildlife	Biological Impairment	6/23/17	Near Galloway from headwaters to mouth at Big Black River	2002
Coastal Streams	Bayou Casotte	200313	Jackson	Fish & Wildlife	Organic Enrichment / Low DO	4/17/20	At Pascagoula from the confluence of West Prong and East Prong to the turning basin	2006
Coastal Streams	Bayou Casotte West Prong	200312	Jackson	Fish & Wildlife	Organic Enrichment / Low DO	6/23/24	At Pascagoula from Louise St. to the confluence of West Prong and East Prong	2010
Coastal Streams	Bayou Cumbest	200311	Jackson	Fish & Wildlife	Organic Enrichment / Low DO	4/17/20	Near Orange Grove from county road east of Orange Grove to mouth at Point Aux Chenes Bay	2006
Coastal Streams	Catahoula Creek	203311	Hancock	Fish & Wildlife	Biological Impairment	4/1/25	Near Santa Rosa from headwaters to confluence with Jourdan River	2012
Coastal Streams	Costapia Bayou	201611	Jackson	Fish & Wildlife	Biological Impairment	4/1/25	At Latimer from headwaters to mouth at Tchoutacabouffa River	2012
Coastal Streams	Dead Tiger Creek	203711	Hancock	Fish & Wildlife	Biological Impairment	4/17/20	Near Kiln from headwaters to confluence with Catahoula Creek	2006
Coastal Streams	Flat Branch	200914	Harrison	Fish & Wildlife	Biological Impairment	4/1/25	Near Hovey from headwaters to mouth at Saucier Creek	2012
Coastal Streams	Flat Branch	202111	Harrison	Fish & Wildlife	Biological Impairment	6/23/17	Near Gulfport from headwaters to mouth at Bernard Bayou	2002
Coastal Streams	Gulf Park Estates Beach	250411	Jackson	Recreation	Enterococci	4/1/25	Near Ocean Springs from Pelican Ave to Deer Street	2008
Coastal Streams	Gulf Park Estates Beach	250411	Jackson	Fish & Wildlife	Total Nitrogen	4/1/25	Near Ocean Springs from Pelican Ave to Deer Street	2012

Mississippi 2014 Section 303(d) List of Impaired Water Bodies

Coastal Streams	Palmer Creek	200915	Harrison	Fish & Wildlife	Biological Impairment	4/1/25	Near Success from headwaters to mouth at Biloxi River	2012
Coastal Streams	Railroad Creek	201411	Stone, Jackson, Harrison	Fish & Wildlife	Biological Impairment	4/1/25	Near Vestry from headwaters to mouth at Ramsey Creek	2012
Coastal Streams	Tiger Creek	200912	Harrison	Fish & Wildlife	Biological Impairment	4/1/25	Near Success from headwaters to mouth at Biloxi River	2012
Coastal Streams	Turkey Creek	202211	Harrison	Fish & Wildlife	Biological Impairment	6/23/17	Near Long Beach from confluence with Canal #2 to Hwy 49	2002
Coastal Streams	Unnamed Tributary To Bayou LaSalle	204013	Harrison, Hancock	Fish & Wildlife	Biological Impairment	4/1/27	Near Vidalia from headwaters to mouth at Bayou LaSalle	2014
Coastal Streams	Unnamed Tributary To Rotten Bayou	204012	Harrison, Hancock	Fish & Wildlife	Biological Impairment	4/1/27	Near Diamondhead from headwaters to mouth at Rotten Bayou	2014
Coastal Streams	West Creek	201012	Stone, Harrison	Fish & Wildlife	Biological Impairment	4/1/25	Near Howison from confluence with McHenry Creek to mouth at Saucier Creek	2012
Coastal Streams	Wolf Creek	205312	Hancock, Harrison	Fish & Wildlife	Biological Impairment	4/1/25	Near Dedeaux from headwaters to mouth at Wolf River	2012
North Independent Streams	Bynum Creek	300413	Alcorn	Fish & Wildlife	Biological Impairment	4/1/27	Near Rienzi from headwaters to mouth at Hinkle Creek	2014
North Independent Streams	Eastes Creek	301112	Alcorn	Fish & Wildlife	Biological Impairment	4/1/27	Near Kossuth from the confluence with Underwood Creek to the mouth at Tuscumbia River Canal	2014
North Independent Streams	Fourth Creek	301913	Tippah, Alcorn	Fish & Wildlife	Biological Impairment	4/1/27	Near Walnut from headwaters to mouth at Hatchie River	2014
North Independent Streams	Grays Creek	303511	Benton	Fish & Wildlife	Biological Impairment	4/1/27	At Michigan City from headwaters to Tennessee state line	2014
North Independent Streams	Hinkle Creek	300412	Alcorn	Fish & Wildlife	Biological Impairment	4/1/27	Near Rienzi from headwaters to mouth at Tuscumbia River Canal	2014
North Independent Streams	Owl Creek	301412	Tippah	Fish & Wildlife	Biological Impairment	6/23/24	From headwaters to mouth at Little Hatchie River	2010

Mississippi 2014 Section 303(d) List of Impaired Water Bodies

North Independent Streams	Tarebreeches Creek	301212	Alcorn	Fish & Wildlife	Biological Impairment	6/23/24	From headwaters to mouth at Tusculumbia River Canal	2010
North Independent Streams	Turkey Creek	302112	Tippah	Fish & Wildlife	Biological Impairment	4/1/27	Near Falkner from headwaters to mouth at Muddy Creek	2014
North Independent Streams	West Prong Muddy Creek	302011	Tippah	Fish & Wildlife	Biological Impairment	4/1/25	At Falkner from headwaters to mouth at Muddy Creek	2012
Pascagoula River	Anderson Branch	401711	Newton	Fish & Wildlife	Biological Impairment	4/17/20	Near Decatur from headwaters to mouth at Okahatta Creek	2006
Pascagoula River	Archusa Creek	405111	Clarke	Fish & Wildlife	Biological Impairment	4/1/25	Near Enterprise from headwaters at unnamed impoundment to MWS 4052 boundary near Moore Mill Creek	2012
Pascagoula River	Beaver Creek	421212	Perry	Fish & Wildlife	Biological Impairment	4/1/25	Near Barbara from headwaters to mouth at Hickory Creek	2012
Pascagoula River	Big Creek	409911	Jones	Fish & Wildlife	Biological Impairment	4/1/27	Near Soso from MWS 4098 boundary to mouth at Leaf River	2014
Pascagoula River	Chunky Creek	401511	Newton	Fish & Wildlife	Biological Impairment	4/17/20	Near Union from headwaters to MWS 4018 boundary	2006
Pascagoula River	Chunky River	402611	Lauderdale, Clarke	Fish & Wildlife	Biological Impairment	4/17/20	Near Enterprise from confluence with Possum Creek to mouth at Chickasawhay River	2006
Pascagoula River	Chunky River	402312	Newton, Lauderdale	Fish & Wildlife	Biological Impairment	4/1/27	At Chunky from confluence with Chunky Creek and Poterchitto Creek to the MWS 4026 boundary	2014
Pascagoula River	Clear Creek	409013	Smith	Fish & Wildlife	Biological Impairment	4/1/25	Near Trazler from headwaters to mouth at Oakahay Creek	2012
Pascagoula River	Dry Creek	403811	Clarke, Wayne	Fish & Wildlife	Biological Impairment	4/1/25	Near Matherville from headwaters to mouth at Buckatunna Creek	2012
Pascagoula River	Eucutta Creek	405811	Wayne, Clarke	Fish & Wildlife	Biological Impairment	4/1/25	Near Shubuta from outfall of small unnamed pond to confluence with Chickasawhay River	2012
Pascagoula River	Flint Creek	420211	Stone	Fish & Wildlife	Biological Impairment	4/1/25	At Wiggins from outfall of Flint Creek Reservoir to mouth at Red Creek	2012
Pascagoula River	Gordon Creek	405011	Clarke	Fish & Wildlife	Biological Impairment	4/1/25	Near Elwood from headwaters to mouth at Souenlovie Creek	2012
Pascagoula River	Horse Branch	413612	Jasper	Fish & Wildlife	Biological Impairment	4/17/20	Near Heidelberg from headwaters to mouth at Tallahattah Creek	2006
Pascagoula River	Houston Creek	400312	Neshoba, Kemper	Fish & Wildlife	Biological Impairment	4/1/27	At Rio from headwaters to mouth at Okatibbee Creek	2014

Mississippi 2014 Section 303(d) List of Impaired Water Bodies

Pascagoula River	Indian Creek	417612	George	Fish & Wildlife	Biological Impairment	4/1/25	Near Basin from headwaters to mouth at Pascagoula River	2012
Pascagoula River	Leonards Mill Creek	410312	Covington	Fish & Wildlife	Biological Impairment	6/23/24	From headwaters to mouth at Okatoma Creek	2010
Pascagoula River	Little Cedar Creek	417411	George	Fish & Wildlife	Biological Impairment	4/1/25	Near Lucedale from headwaters to mouth at Big Cedar Creek	2012
Pascagoula River	Little Oakahay Creek	408912	Smith	Fish & Wildlife	Biological Impairment	4/1/25	Near Burns from headwaters to mouth at Oakahay Creek	2012
Pascagoula River	Long Creek	403011	Lauderdale, Clarke	Fish & Wildlife	Biological Impairment	6/23/24	From confluence with Gays Branch to MWS 4031 boundary	2010
Pascagoula River	Long Creek	403111	Clarke	Fish & Wildlife	Biological Impairment	6/23/24	From MWS 4030 boundary to mouth at Buckatunna Creek	2010
Pascagoula River	Martin Creek	407812	Greene	Fish & Wildlife	Biological Impairment	4/1/27	From Leakesville POTW outfall downstream to mouth at Chickasawhay River	2014
Pascagoula River	Okatibbee Creek	401011	Lauderdale	Fish & Wildlife	Biological Impairment	6/23/17	Near Savoy from confluence with Sowashee Creek to MWS 4011 boundary	2002
Pascagoula River	Okatibbee Creek	401111	Lauderdale	Fish & Wildlife	Biological Impairment	6/23/17	From the MWS 4010 boundary to the mouth at Chickasawhay River	2002
Pascagoula River	Okatibbee Creek	401011	Lauderdale	Fish & Wildlife	pH	4/1/25	Near Savoy from confluence with Sowashee Creek to MWS 4011 boundary	2012
Pascagoula River	Okatibbee Creek	401011	Lauderdale	Fish & Wildlife	Total Nitrogen	4/1/25	Near Savoy from confluence with Sowashee Creek to MWS 4011 boundary	2012
Pascagoula River	Okatoma Creek	410511	Covington	Fish & Wildlife	Total Nitrogen	4/1/25	At Kola from confluence with Roger Creek to MWS 4107 boundary near Gin Branch	2012
Pascagoula River	Patton Creek	406211	Wayne	Fish & Wildlife	Biological Impairment	4/17/20	Near Waynesboro from Waynesboro Lake to mouth at Chickasawhay River	2006
Pascagoula River	Penantly Creek	404712	Jasper	Fish & Wildlife	Biological Impairment	4/1/25	At Rose Hill from headwaters to mouth at Souenlovie Creek	2012
Pascagoula River	Prairie Creek	413911	Jasper	Fish & Wildlife	Biological Impairment	4/17/20	Near Heidelberg from headwaters to mouth at Bogue Homo	2006
Pascagoula River	Rocky Creek	403311	Clarke	Fish & Wildlife	Biological Impairment	4/1/25	Near Linton from headwaters to mouth at Buckatunna Creek	2012
Pascagoula River	Rocky Creek	426211	George	Fish & Wildlife	Biological Impairment	4/1/27	At Shipman from headwaters to mouth at Escatawpa River	2014
Pascagoula River	Shelton Creek	410812	Jones, Covington	Fish & Wildlife	Biological Impairment	4/1/25	At Lux from headwaters to mouth at Okatoma Creek	2012
Pascagoula River	Souenlovie Creek	404811	Newton, Jasper	Fish & Wildlife	Biological Impairment	6/23/24	From confluence with Penantly Creek to confluence with Twistwood Creek	2010

Mississippi 2014 Section 303(d) List of Impaired Water Bodies

Pascagoula River	Sowashee Creek	400811	Lauderdale	Fish & Wildlife	Total Nitrogen	6/23/17	At Meridian from headwaters to confluence with unnamed tributary at MWS 4237 boundary	2002
Pascagoula River	Sowashee Creek	400911	Lauderdale	Fish & Wildlife	Total Nitrogen	6/23/17	From confluence with unnamed trib at MWS 4237 boundary to confluence with Okatibbee Creek	2002
Pascagoula River	Sowashee Creek	423711	Lauderdale	Fish & Wildlife	Total Nitrogen	6/23/17	Near Meridian from MWS 4008 boundary to MWS 4009 boundary	2010
Pascagoula River	Sowashee Creek	400811	Lauderdale	Fish & Wildlife	Total Phosphorus	6/23/17	At Meridian from headwaters to confluence with unnamed tributary at MWS 4237 boundary	2002
Pascagoula River	Sowashee Creek	400911	Lauderdale	Fish & Wildlife	Total Phosphorus	6/23/17	From confluence with unnamed tributary at MWS 4237 boundary to confluence with Okatibbee Creek	2002
Pascagoula River	Sowashee Creek	423711	Lauderdale	Fish & Wildlife	Total Phosphorus	6/23/17	Near Meridian from MWS 4008 boundary to MWS 4009 boundary	2010
Pascagoula River	Tallahala Creek	MS087T	Jones	Fish & Wildlife	Biological Impairment	6/23/17	Near Laurel from confluence with Tallahatta Creek to confluence with Tallahoma Creek	2002
Pascagoula River	Tallahala Creek	415511	Jones, Forrest, Perry	Fish & Wildlife	pH	4/1/25	At Runnelstown from confluence with Courtney Creek to MWS 4156 boundary near Hammock Branch	2012
Pascagoula River	Tallahala Creek	415511	Jones, Forrest, Perry	Fish & Wildlife	Total Nitrogen	4/1/25	At Runnelstown from confluence with Courtney Creek to MWS 4156 boundary near Hammock Branch	2012
Pascagoula River	Tallahala Creek	415511	Jones, Forrest, Perry	Fish & Wildlife	Total Phosphorus	4/1/25	At Runnelstown from confluence with Courtney Creek to MWS 4156 boundary near Hammock Branch	2012
Pascagoula River	Tallahoma Creek	412511	Jasper, Jones	Fish & Wildlife	Biological Impairment	6/23/17	Near Laurel from confluence with Piney Branch to MWS 4127 boundary	2002
Pascagoula River	Tallahoma Creek	412711	Jasper, Jones	Fish & Wildlife	Biological Impairment	6/23/17	From MWS 4125 boundary to confluence with Terrapin Creek	2002
Pascagoula River	Tallahoma Creek	412811	Jasper, Jones	Fish & Wildlife	Biological Impairment	6/23/17	From confluence with Terrapin Creek to confluence with Horse Creek	2002
Pascagoula River	Tallahoma Creek	412911	Jasper, Jones	Fish & Wildlife	Biological Impairment	6/23/17	From confluence with Horse Creek to confluence with Tallahala Creek	2002
Pascagoula River	Tallashua Creek	401412	Newton	Fish & Wildlife	Biological Impairment	4/1/25	At Perdue from MWS 4012 boundary at confluence of Big John Branch to confluence with Little Rock Creek	2012

Mississippi 2014 Section 303(d) List of Impaired Water Bodies

Pascagoula River	Terrible Creek	411311	Covington	Fish & Wildlife	Biological Impairment	4/1/25	Near Williamsburg from headwaters to mouth at Bouie River	2012
Pascagoula River	Tiger Creek	414512	Jones	Fish & Wildlife	Biological Impairment	4/1/25	Near Ovet from confluence with East Tiger Creek at the MWS 4144 boundary to mouth at Bogue Homo	2012
Pascagoula River	Twistwood Creek	423811	Jasper, Clarke	Fish & Wildlife	Biological Impairment	4/1/27	Near Pachuca from confluence of North and South Twistwood Creek to mouth at Souenlovie Creek	2014
Pascagoula River	Unnamed Tributary To Oakahay Creek	409014	Smith	Fish & Wildlife	Biological Impairment	4/1/25	Near Raleigh from headwaters to mouth at Oakahay Creek	2012
Pascagoula River	West Bouie Creek	411212	Jefferson Davis	Fish & Wildlife	Biological Impairment	4/1/25	Near Bassfield from headwaters to confluence with Bouie River	2012
Pearl River	Ashlog Creek	508313	Rankin	Fish & Wildlife	Biological Impairment	4/1/25	Near Pelahatchie from headwaters to mouth at Pelahatchie Creek	2012
Pearl River	Bahala Creek	513911	Copiah	Fish & Wildlife	Biological Impairment	6/23/24	From confluence with Russell Creek to confluence with Little Bahala Creek	2010
Pearl River	Beaver Creek	521413	Pike	Fish & Wildlife	Biological Impairment	4/17/20	Near Johnson's Station from outfall of Dixie Springs Lake to mouth at Bogue Chitto River	2006
Pearl River	Big Creek	513211	Simpson	Fish & Wildlife	Biological Impairment	4/1/25	Near Harrisville from MWS 5131 boundary at Heed Neely Road Bridge to mouth at Strong River	2012
Pearl River	Bogue Chitto River	MSBGCHT RM2	Lincoln, Pike	Fish & Wildlife	Biological Impairment	6/23/17	From confluence of Boone Creek to Johnson's Station	2002
Pearl River	Boone Creek	521113	Lincoln	Fish & Wildlife	Biological Impairment	4/1/25	Near Brookhaven from headwaters to mouth at Bogue Chitto	2012
Pearl River	Caney Creek	511411	Scott, Smith	Fish & Wildlife	Biological Impairment	4/1/25	Near Pulaski from headwaters at W Moore Tower Road to mouth at Strong River	2012
Pearl River	Clear Creek	508611	Rankin	Fish & Wildlife	Biological Impairment	4/1/25	Near Pelahatchie from headwaters to mouth at Pelahatchie Creek	2012
Pearl River	Cobbs Creek	504111	Leake	Fish & Wildlife	Biological Impairment	4/1/25	Near Carthage from headwaters to mouth at Lobutch Creek	2012
Pearl River	Cole Creek	506111	Attala	Fish & Wildlife	Biological Impairment	4/1/27	Near French Camp from headwaters to MWS 5059 boundary	2014
Pearl River	Coon Creek	503713	Leake	Fish & Wildlife	Biological Impairment	4/1/27	Near Renfro from headwaters to mouth at Lobutch Creek	2014

Mississippi 2014 Section 303(d) List of Impaired Water Bodies

Pearl River	Holiday Creek	516311	Jefferson Davis, Marion	Fish & Wildlife	Biological Impairment	6/23/24	From confluence with unnamed tributary at MWS 5162 boundary to mouth at Pearl River	2010
Pearl River	Hollybush Creek	508612	Rankin	Fish & Wildlife	Biological Impairment	4/1/25	Near Pelahatchie from headwaters to mouth at Clear Creek	2012
Pearl River	Hontokalo Creek	504711	Scott	Fish & Wildlife	Biological Impairment	4/1/27	Near Steel from headwaters to mouth at Little Canal	2014
Pearl River	Land Creek	500911	Kemper	Fish & Wildlife	Biological Impairment	4/1/27	Near Bogue Chitto from headwaters to mouth at Bogue Chitto River	2014
Pearl River	Limestone Creek	511011	Simpson	Fish & Wildlife	Biological Impairment	6/23/24	From headwaters to mouth at Pearl River	2010
Pearl River	Line Creek	508312	Scott, Rankin	Fish & Wildlife	Biological Impairment	6/23/24	From headwaters to mouth at Pelahatchie Creek	2010
Pearl River	Little Bahala Creek	514011	Lincoln, Lawrence	Fish & Wildlife	Biological Impairment	4/1/25	Near Wesson from headwaters to mouth at Bahala Creek	2012
Pearl River	Little Copiah Creek	513312	Copiah	Fish & Wildlife	Biological Impairment	4/1/21	From headwaters to mouth at Copiah Creek	2008
Pearl River	Lynch Creek	509311	Hinds	Fish & Wildlife	Biological Impairment	6/23/17	At Jackson from headwaters to the Pearl River	2002
Pearl River	Owl Creek	501111	Kemper	Fish & Wildlife	Biological Impairment	6/23/17	Near Preston from headwaters to the Bogue Chitto River	2002
Pearl River	Pickens Creek	504112	Leake	Fish & Wildlife	Biological Impairment	4/1/27	Near Redwater from headwaters to mouth at Cobbs Creek	2014
Pearl River	Purvis Creek	511711	Rankin, Smith	Fish & Wildlife	Biological Impairment	4/1/25	Near Polkville from headwaters to mouth at Strong River	2012
Pearl River	Rials Creek	512712	Simpson	Fish & Wildlife	Biological Impairment	6/23/24	From headwaters to confluence with Simmons Branch	2010
Pearl River	Russell Creek	513812	Copiah	Fish & Wildlife	Biological Impairment	4/1/27	Near Beauregard from headwaters to mouth at Bahala Creek	2014
Pearl River	Shiola Creek	507111	Leake	Fish & Wildlife	Biological Impairment	4/1/25	At St. Ann from headwaters to MWS 5070 boundary at St. Ann Road	2012
Pearl River	Steel Creek	513511	Copiah	Fish & Wildlife	Biological Impairment	4/1/27	Near Rockport from headwaters to mouth at the Pearl River	2014
Pearl River	Steen Creek	510311	Rankin	Fish & Wildlife	Biological Impairment	4/1/27	At Florence from MWS 5102 boundary to mouth at Pearl River	2014
Pearl River	Strong River	511911	Scott	Fish & Wildlife	pH	4/1/25	Near D'lo to MWS 5124 boundary at confluence with Robinson Creek	2012
Pearl River	Sugar Bogue	507612	Scott	Fish & Wildlife	Biological Impairment	6/23/17	Near Forkville from headwaters to mouth at Coffee Bogue	2002

Mississippi 2014 Section 303(d) List of Impaired Water Bodies

Pearl River	Tibby Creek	505811	Choctaw, Attala	Fish & Wildlife	Biological Impairment	4/1/27	Near McCool from confluence with Robinson Branch to 5056 MWS boundary	2014
Pearl River	Topisaw Creek	522211	Lincoln, Pike	Fish & Wildlife	Biological Impairment	4/1/27	Near Ruth from 5219 MWS boundary to confluence at Bogue Chitto	2014
Pearl River	Town Creek	503211	Leake	Fish & Wildlife	Biological Impairment	6/23/17	At Carthage from headwaters to the Pearl River	2002
Pearl River	Turtle Skin Creek	520511	Hancock	Fish & Wildlife	Biological Impairment	6/23/17	Near Santa Rosa from headwaters to confluence with Mikes River	2002
Pearl River	Unnamed Tributary To Clear Creek	521513	Pike	Fish & Wildlife	Biological Impairment	4/17/20	Near Summit from headwaters to mouth at Clear Creek	2006
Pearl River	Unnamed Tributary To Tallahaga Creek	500712	Winston	Fish & Wildlife	Biological Impairment	4/1/21	From headwaters to mouth at Tallahaga Creek	2008
Pearl River	Upper Little Creek	517011	Lamar, Marion	Fish & Wildlife	Biological Impairment	6/23/24	From confluence with Graves Creek to mouth at Pearl River	2010
South Independent Streams	Bayou Pierre	602812	Claiborne	Fish & Wildlife	pH	4/1/25	Near Carlisle from the confluence with Storm Creek to the 6029 MWS boundary near the confluence with Whiskey Branch	2012
South Independent Streams	Bayou Sara	610911	Wilkinson	Fish & Wildlife	Biological Impairment	6/23/24	From headwaters to confluence with Dunbar Creek	2010
South Independent Streams	Bear Creek	610514	Wilkinson	Fish & Wildlife	Biological Impairment	6/23/24	From headwaters to mouth at Buffalo River	2010
South Independent Streams	Bolls Creek	604611	Jefferson	Fish & Wildlife	Biological Impairment	6/23/24	From headwaters to confluence with North Fork Coles Creek	2010
South Independent Streams	Browns Creek	609612	Wilkinson	Fish & Wildlife	Biological Impairment	4/1/27	Near Woodville from headwaters to mouth at Buffalo River	2014
South Independent Streams	Cars Creek	612112	Amite	Fish & Wildlife	Biological Impairment	6/23/17	Near Liberty from headwaters to mouth at East Fork Amite River	2002
South Independent Streams	Clarks Creek	604011	Claiborne	Fish & Wildlife	Biological Impairment	6/23/24	From confluence with Buckins Creek at MWS 6039 boundary to mouth at Barland Creek	2010

Mississippi 2014 Section 303(d) List of Impaired Water Bodies

South Independent Streams	Comite Creek	613211	Wilkinson, Amite	Fish & Wildlife	Biological Impairment	4/17/20	Near Centreville from headwaters to mouth at Louisiana state line	2006
South Independent Streams	Days Creek	612312	Amite	Fish & Wildlife	Biological Impairment	4/1/27	Near Busy Corner from headwaters to mouth at West Fork Amite Creek	2014
South Independent Streams	Dowd Creek	600211	Jefferson	Fish & Wildlife	Biological Impairment	4/1/27	Near Alcorn from headwaters to mouth at Rodney lake	2014
South Independent Streams	Dry Bayou	608611	Franklin	Fish & Wildlife	Biological Impairment	4/1/27	Near White Apple from headwaters to mouth at Caney Branch	2014
South Independent Streams	Dry Creek	608111	Franklin	Fish & Wildlife	Biological Impairment	6/23/24	From headwaters to mouth at Homochitto River	2010
South Independent Streams	Dry Creek	608211	Franklin	Fish & Wildlife	Biological Impairment	4/1/25	At Garden City from headwaters to mouth at Homochitto River	2012
South Independent Streams	Folkes Creek	605011	Jefferson	Fish & Wildlife	Biological Impairment	6/23/24	From confluence of Stampley Creek and Compton Creek to mouth at South Fork Coles Creek	2010
South Independent Streams	Garret Creek	603811	Jefferson	Fish & Wildlife	Biological Impairment	4/1/25	Near Union Church from headwaters to mouth at Foster Creek	2012
South Independent Streams	Hatcher Bayou	690411	Warren	Fish & Wildlife	Biological Impairment	4/1/25	At Vicksburg from MWS 6902 boundary at Fisher Ferry Road to mouth at Hennesseys Bayou	2012
South Independent Streams	Hughes Creek	603911	Claiborne, Jefferson	Fish & Wildlife	Biological Impairment	4/1/25	At Violet from headwaters to mouth at Clarks Creek	2012
South Independent Streams	Little Beaver Creek	612912	Amite	Fish & Wildlife	Biological Impairment	4/1/27	Near Gloster from headwaters to mouth at Beaver Creek	2014
South Independent Streams	Mud Island Creek	604811	Jefferson	Fish & Wildlife	Biological Impairment	6/23/24	From confluence with Fairchilds Creek to confluence with North Fork Coles Creek	2010
South Independent Streams	Muddy Bayou	600212	Claiborne, Jefferson	Fish & Wildlife	Biological Impairment	6/23/24	Near Alcorn from impoundment in headwaters to mouth at Dowd Creek	2010

Mississippi 2014 Section 303(d) List of Impaired Water Bodies

South Independent Streams	North Dry Creek	606112	Franklin	Fish & Wildlife	Biological Impairment	4/1/27	Near Bude from headwaters to mouth at Homochitto River	2014
South Independent Streams	North Fork Coles Creek	604411	Jefferson	Fish & Wildlife	Biological Impairment	6/23/24	From headwaters to MWS 6045 boundary	2010
South Independent Streams	North Fork Coles Creek	604511	Jefferson	Fish & Wildlife	Biological Impairment	6/23/24	From MWS boundary 6044 to MWS 6047 boundary	2010
South Independent Streams	North Fork Coles Creek	604711	Jefferson	Fish & Wildlife	Biological Impairment	6/23/24	From MWS boundary 6045 to mouth at Coles Creek	2010
South Independent Streams	Paces Bayou	690311	Warren	Fish & Wildlife	Biological Impairment	6/23/24	From confluence with Redbone Creek to mouth at Hennessey's Bayou	2010
South Independent Streams	Pickneyville Creek	611211	Wilkinson	Fish & Wildlife	Biological Impairment	4/1/27	Near Pickneyville from headwaters to mouth at Little Bayou Sara	2014
South Independent Streams	Saint Cathrines Creek	600611	Adams	Fish & Wildlife	Biological Impairment	6/23/17	At Natchez from headwaters to mouth at Mississippi River	2002
South Independent Streams	Stafford Creek	613212	Wilkinson	Fish & Wildlife	Biological Impairment	4/1/21	From headwaters to mouth at Comite Creek	2008
South Independent Streams	Storm Creek	602811	Claiborne	Fish & Wildlife	Biological Impairment	6/23/17	Near Carlisle from headwaters to mouth at Bayou Pierre	2002
South Independent Streams	Terrys Creek	614211	Pike	Fish & Wildlife	Biological Impairment	4/1/25	At Terry Creek from headwaters to Louisiana state line	2012
South Independent Streams	Willis Creek	603411	Jefferson, Claiborne	Fish & Wildlife	Biological Impairment	4/1/25	At Tillman from headwaters to MWS 6035 boundary near Tillman Road Bridge	2012
South Independent Streams	Zeigler Creek	607811	Franklin	Fish & Wildlife	Biological Impairment	4/1/27	Near Rosetta from headwaters to mouth at Homochitto River	2014
Tennessee River	Little Cripple Deer Creek	701412	Tishomingo	Fish & Wildlife	Biological Impairment	6/23/17	Near Tishomingo from headwaters to confluence with Cripple Deer Creek	2002
Tennessee River	Pennywinkle Creek	701511	Tishomingo	Fish & Wildlife	Biological Impairment	4/1/27	At Iuka from headwaters to Alabama state line	2014

Mississippi 2014 Section 303(d) List of Impaired Water Bodies

Tombigbee River	Alamuchee Creek	818311	Lauderdale	Fish & Wildlife	Biological Impairment	6/23/24	From headwaters to confluence with Little Alamuchee Creek	2010
Tombigbee River	Alamuchee Creek	818411	Lauderdale	Fish & Wildlife	Biological Impairment	6/23/24	From Little Alamuchee Creek to Alabama state line	2010
Tombigbee River	Ash Creek	816012	Noxubee	Fish & Wildlife	Biological Impairment	6/23/24	From headwaters to mouth at Noxubee River	2010
Tombigbee River	Boguefala Creek	819211	Lee, Itawamba	Fish & Wildlife	Biological Impairment	4/1/27	Near Mooresville from headwaters to confluence with Greenwood Creek	2014
Tombigbee River	Boguegaba Creek	802711	Lee, Itawamba, Monroe	Fish & Wildlife	Biological Impairment	4/1/25	At Richmond from headwaters to mouth at Boguefala Creek	2012
Tombigbee River	Browning Creek	812913	Oktibbeha, Noxubee	Fish & Wildlife	Biological Impairment	4/1/21	From headwaters to mouth at Noxubee River	2008
Tombigbee River	Buttahatchee River	806711	Monroe	Fish & Wildlife	pH	4/1/25	Near Greenwood Springs from confluence with Sipsey Creek to the MWS 8068 boundary near the confluence with Alsup Creek	2012
Tombigbee River	Cane Creek	807411	Chickasaw, Clay	Fish & Wildlife	Biological Impairment	6/23/24	From headwaters to mouth at Houlka Creek	2010
Tombigbee River	Chico Creek	820912	Chickasaw	Fish & Wildlife	Biological Impairment	6/23/24	Near Houston from headwaters to mouth at Houlka Creek	2010
Tombigbee River	Chinchahoma Creek	812811	Oktibbeha	Fish & Wildlife	Biological Impairment	4/1/21	From headwaters to mouth at Noxubee River	2008
Tombigbee River	Coonewah Creek	805311	Lee	Fish & Wildlife	Biological Impairment	6/23/24	From confluence with little Coonewah Creek to mouth at Town Creek	2010
Tombigbee River	Cooper Creek	809913	Lowndes	Fish & Wildlife	Biological Impairment	6/23/17	Near Steen from confluence of Mayhew Creek to confluence with Yellow Creek	2002
Tombigbee River	Fuller Creek	804112	Monroe, Clay	Fish & Wildlife	Biological Impairment	4/1/25	Near West Point from headwaters to mouth at Town Creek	2012
Tombigbee River	Hollis Creek	812211	Oktibbeha	Fish & Wildlife	Total Nitrogen	6/23/17	Near Starkville from headwaters to the Noxubee River	2002
Tombigbee River	Hollis Creek	812211	Oktibbeha	Fish & Wildlife	Total Phosphorus	6/23/17	Near Starkville from headwaters to the Noxubee River	2002
Tombigbee River	Leeper Creek	805112	Lee	Fish & Wildlife	Biological Impairment	4/1/25	Near Plantersville from headwaters to mouth at Town Creek	2012
Tombigbee River	Little Brown Creek	800611	Prentiss	Fish & Wildlife	Biological Impairment	6/23/17	Near Marietta from headwaters to MWS 8007 boundary	2002
Tombigbee River	Little Brown Creek	800712	Prentiss	Fish & Wildlife	Biological Impairment	6/23/17	From MWS 8006 to confluence with Big Brown Creek	2002

Mississippi 2014 Section 303(d) List of Impaired Water Bodies

Tombigbee River	Long Branch	808512	Oktibbeha	Fish & Wildlife	Biological Impairment	6/23/17	Near Starkville from headwaters to Trim Cane Creek	2002
Tombigbee River	Long Branch	808312	Clay	Fish & Wildlife	Biological Impairment	4/1/27	Near Mhoons Valley from headwaters to mouth at Line Creek	2014
Tombigbee River	Long Creek	807612	Chickasaw, Clay	Fish & Wildlife	Biological Impairment	6/23/24	From headwaters to mouth at Houlka Creek	2010
Tombigbee River	Luxapallila Creek	821611	Lowndes	Fish & Wildlife	pH	4/1/25	At Steens from Alabama state line (including tributary) to confluence with Yellow Creek	2012
Tombigbee River	Mantachie Creek	801611	Lee, Itawamba	Fish & Wildlife	Biological Impairment	4/1/27	At Mantachie from headwaters to Hwy 371	2014
Tombigbee River	Moore Creek	819611	Lowndes	Fish & Wildlife	Biological Impairment	6/23/17	At Columbus from headwaters to the Tombigbee River	2002
Tombigbee River	Oak Slush Creek	819612	Lowndes	Fish & Wildlife	Biological Impairment	6/23/17	Near Columbus from headwaters to the Ten-Tom Waterway	2002
Tombigbee River	Okeelala Creek	801011	Prentiss, Lee	Fish & Wildlife	Biological Impairment	6/23/24	From headwaters to mouth at Twentymile Creek	2010
Tombigbee River	Osborne Creek	800912	Prentiss	Fish & Wildlife	Biological Impairment	6/23/24	From headwaters to mouth at Twentymile Creek	2010
Tombigbee River	Puncheon Creek	801613	Lee, Itawamba	Fish & Wildlife	Biological Impairment	4/1/27	Near Mantachie from headwaters to mouth at Mantachie Creek	2014
Tombigbee River	Ray Branch	801912	Itawamba	Fish & Wildlife	Biological Impairment	4/1/27	Near County Road 23 from headwaters to mouth at Gum Creek	2014
Tombigbee River	Rock Creek	800211	Tishomingo, Prentiss	Fish & Wildlife	Biological Impairment	6/23/17	Near Belmont from headwaters to the Ten-Tom Waterway	2002
Tombigbee River	Sand Creek	804811	Lee	Fish & Wildlife	Biological Impairment	6/23/24	From headwaters to mouth at Mud Creek	2010
Tombigbee River	Sand Creek	801612	Lee, Itawamba	Fish & Wildlife	Biological Impairment	4/1/27	Near Mantachie from headwaters to mouth at Mantachie Creek	2014
Tombigbee River	Shaw Creek	812313	Oktibbeha	Fish & Wildlife	Biological Impairment	4/1/21	From headwaters to mouth at Noxubee River	2008
Tombigbee River	Shotbag Creek	813012	Lowndes, Noxubee	Fish & Wildlife	Biological Impairment	4/1/21	From headwaters to mouth at Noxubee River	2008
Tombigbee River	Spring Creek	804213	Monroe	Fish & Wildlife	Biological Impairment	6/23/24	Near Vinton from headwaters to confluence with Hang Kettle Creek	2010
Tombigbee River	Spring Creek	809312	Clay	Fish & Wildlife	Biological Impairment	6/23/17	Near WestPoint from headwaters to Ten-Tom Waterway	2002
Tombigbee River	Standing Reed Creek	808011	Chickasaw, Clay	Fish & Wildlife	Biological Impairment	6/23/24	From headwaters to mouth at Little Cane Creek	2010

Mississippi 2014 Section 303(d) List of Impaired Water Bodies

Tombigbee River	Town Creek	808912	Clay	Fish & Wildlife	Biological Impairment	6/23/17	At West Point from headwaters to Tibbee Creek	2002
Tombigbee River	Town Creek	MS011T	Monroe	Fish & Wildlife	Biological Impairment	6/23/17	Near Strong from headwaters to mouth At Ten-Tom Waterway	2002
Tombigbee River	Town Creek	820211	Monroe	Fish & Wildlife	pH	4/1/25	Near Nettleton from confluence with Roberts Branch at MWS 8021 boundary to confluence with Shoal Creek	2012
Tombigbee River	Tulip Creek	804912	Lee	Fish & Wildlife	Biological Impairment	4/1/25	At Tupelo from headwaters to mouth at Town Creek	2012
Tombigbee River	Unnamed Tributary To Catalpa Creek	809012	Clay	Fish & Wildlife	Biological Impairment	4/17/20	Near Stephens from headwaters to mouth at Catawpa Creek	2006
Tombigbee River	Unnamed Tributary To Gilmer Creek	810412	Lowndes	Fish & Wildlife	Biological Impairment	4/17/20	Near Artesia from headwaters to mouth at Gilmer Creek	2006
Tombigbee River	Wet Water Creek	813812	Noxubee	Fish & Wildlife	Biological Impairment	6/23/17	Near Brooksville from headwaters to Noxubee River	2002
Tombigbee River	Wolf Creek	803412	Monroe	Fish & Wildlife	Biological Impairment	6/23/24	From headwaters to mouth at Mattubby Creek	2010
Tombigbee River	Wolf Creek	818811	Prentiss	Fish & Wildlife	Biological Impairment	6/23/24	From headwaters to mouth at Twentymile Creek	2010
Tombigbee River	Yellow Creek	813211	Winston, Noxubee	Fish & Wildlife	Biological Impairment	6/23/17	Near Betheden from headwaters to the Noxubee River	2002
Tombigbee River	Yonaba Creek	804511	Lee	Fish & Wildlife	Biological Impairment	4/1/27	At Tupelo from confluence of Bridge Creek to confluence of Town Creek	2014
Yazoo River	Abiaca Creek	920011	Carroll	Fish & Wildlife	Biological Impairment	4/1/27	At Seven Pines from confluence with Coila Creek to MWS boundary 9201	2014
Yazoo River	Bear Bayou	951412	Sunflower	Fish & Wildlife	Organic Enrichment / Low DO	6/23/24	From headwaters to mouth at Quiver River	2010
Yazoo River	Bear Creek	913812	Chickasaw, Calhoun	Fish & Wildlife	Biological Impairment	4/1/27	Near Atlanta from the headwaters to mouth at Topashaw Creek Canal	2014
Yazoo River	Beartail Creek	909712	Tate	Fish & Wildlife	Biological Impairment	6/23/24	From confluence with unnamed tributary near MWS boundary 9096 to mouth at Coldwater River	2010
Yazoo River	Beaver Bayou	951212	Sunflower	Fish & Wildlife	Organic Enrichment / Low DO	4/1/25	From headwaters to mouth at Mound Bayou	2012

Mississippi 2014 Section 303(d) List of Impaired Water Bodies

Yazoo River	Big Bogue	917311	Montgomery Grenada	Fish & Wildlife	Biological Impairment	6/23/17	Near Duck Hill from headwaters to confluence with Wilkins Creek	2002
Yazoo River	Black Creek	921713	Holmes	Fish & Wildlife	Biological Impairment	6/23/24	From confluence with Tarrey Creek near MWS 9215 boundary to confluence with Harland Creek	2010
Yazoo River	Bliss Creek	923411	Warren	Fish & Wildlife	Biological Impairment	6/23/17	Near Redwood from headwaters to the Yazoo River	2002
Yazoo River	Butputter Creek	914511	Grenada	Fish & Wildlife	Biological Impairment	6/23/17	Near Grenada from headwaters to the Grenada Lake Flood Pool	2002
Yazoo River	Bynum Creek	907711	Panola	Fish & Wildlife	Biological Impairment	4/1/27	Near Water Valley from headwaters to Enid Lake Flood Pool	2014
Yazoo River	Cowpen Creek	915312	Calhoun	Fish & Wildlife	Biological Impairment	4/1/21	Near Banner from headwaters to the Skuna River	2008
Yazoo River	Cypress Creek	902111	Lafayette	Fish & Wildlife	Biological Impairment	4/17/20	Near Etta from MWS boundary 9020 to MWS 9019 boundary	2006
Yazoo River	Eagle Lake	953312	Warren	Fish & Wildlife	Organic Enrichment / Low DO	4/1/27	Entire lake near Eagle Bend	2014
Yazoo River	Eagle Lake	953312	Warren	Fish & Wildlife	Total Phosphorus	4/1/27	Entire lake near Eagle Bend	2014
Yazoo River	Fannegusha Creek	920911	Holmes	Fish & Wildlife	Biological Impairment	6/23/17	Near Ituma from Carroll / Holmes county line to MWS 9211 boundary	2002
Yazoo River	Fourmile Branch	907211	Lafayette	Fish & Wildlife	Biological Impairment	4/1/21	Near Oxford from headwaters to mouth at Yellow Leaf Creek	2008
Yazoo River	Hubbard Creek	918111	Tallahatchie	Fish & Wildlife	Biological Impairment	4/1/21	Near Tandy from headwaters to Southlake Bayou	2008
Yazoo River	Hudson Creek	904612	Lafayette	Fish & Wildlife	Biological Impairment	4/17/20	Near Sardis from headwaters to mouth at Clear Creek	2006
Yazoo River	James Wolf Creek	910611	Tate	Fish & Wildlife	Biological Impairment	6/23/24	From headwaters to 9105 MWS boundary	2010
Yazoo River	James Wolf Creek	MS305M1	Tate	Fish & Wildlife	Biological Impairment	6/23/17	Near Looxahoma from headwaters between Aiken and Tyro to mouth at Hickahala Creek	2002
Yazoo River	Jasper Creek	900511	Union	Fish & Wildlife	Biological Impairment	4/17/20	Near New Albany from headwaters to mouth at Little Tallahatchie River	2006
Yazoo River	Lake Beulah	990411	Bolivar	Fish & Wildlife	Organic Enrichment / Low DO	4/1/27	Entire Lake near Beulah	2014
Yazoo River	Little Bogue	MS340LB	Montgomery Grenada	Fish & Wildlife	Biological Impairment	4/17/20	Near Duck Hill from headwaters to Batupan Bogue	2006

Mississippi 2014 Section 303(d) List of Impaired Water Bodies

Yazoo River	Little Coldwater Creek	909112	Marshall	Fish & Wildlife	Biological Impairment	6/23/24	From headwaters to confluence with Coldwater River	2010
Yazoo River	Little Tallahatchie River	MS228M	Union, Marshall	Fish & Wildlife	Biological Impairment	6/23/17	At Etta from confluence with Lappatubby Creek to watershed 228 boundary	2002
Yazoo River	Little Tallahatchie River	901711	Union, Lafayette	Fish & Wildlife	pH	4/1/25	Near Etta from confluence with Mud Creek to MWS boundary 9019 near the Hwy 30 Bridge	2012
Yazoo River	Little Topasaw Creek	913712	Webster, Chickasaw	Fish & Wildlife	Biological Impairment	6/23/17	Near Woodland from headwaters to Topasaw Creek	2002
Yazoo River	Lockes Creek	901811	Union	Fish & Wildlife	Biological Impairment	4/1/27	Near Enterprise from headwaters to Little Tallahatchie River	2014
Yazoo River	Lyon Creek	901111	Pontotoc	Fish & Wildlife	Biological Impairment	4/17/20	Near Pontotoc from headwaters to confluence with Lappatubby Creek	2006
Yazoo River	Meridian Creek	913312	Calhoun	Fish & Wildlife	Biological Impairment	4/1/25	Near Vardaman from headwaters to mouth at Yalobusha River	2012
Yazoo River	Moore Bayou	MS274M	Coahoma	Fish & Wildlife	Biological Impairment	4/1/21	At Jonestown from headwaters to confluence with Cassidy Bayou	2008
Yazoo River	North Tippah Creek	902512	Tippah	Fish & Wildlife	Biological Impairment	4/1/25	Near Ripley from headwaters to mouth at Tippah River	2012
Yazoo River	Okachickima Creek	916211	Yalobusha	Fish & Wildlife	Biological Impairment	6/23/17	Near Hardy from headwaters to Grenada Lake Flood Pool	2002
Yazoo River	Okannatie Creek	900911	Union	Fish & Wildlife	Biological Impairment	4/1/25	At Ecrú from confluence of Popular Springs Creek to MWS 9010 boundary at Hwy 15 Bridge	2012
Yazoo River	Pecan Bayou	951511	Sunflower, LeFlore	Fish & Wildlife	Organic Enrichment / Low DO	4/1/27	Near Doddsville from headwaters to mouth at Quiver River	2014
Yazoo River	Perry Creek	922912	Yazoo	Fish & Wildlife	Biological Impairment	4/17/20	Near Oil City from headwaters to mouth at O'Neal Creek	2006
Yazoo River	Piney Creek	922411	Yazoo	Fish & Wildlife	Biological Impairment	4/1/27	Near Yazoo City from 9223 MWS to confluence with Yazoo River	2014
Yazoo River	Shelton Creek	908411	Tallahatchie, Panola	Fish & Wildlife	Biological Impairment	6/23/17	Near Crowder from headwaters to the Yocona River	2002
Yazoo River	Short Fork Creek	909413	De Soto	Fish & Wildlife	Biological Impairment	4/1/27	Near Alphaba from headwaters through canal to the Coldwater River	2014

Mississippi 2014 Section 303(d) List of Impaired Water Bodies

Yazoo River	Skuna River Canal	MS332S	Pontotoc, Chickasaw, Calhoun	Fish & Wildlife	Biological Impairment	6/23/17	Near Buckhorn from headwaters to MWS 333 boundary	2002
Yazoo River	Splinter Creek	907412	Lafayette	Fish & Wildlife	Biological Impairment	4/1/27	Near Taylor from headwaters to mouth at Yocona River	2014
Yazoo River	Unnamed Tributary To Little Tallahatchie River	901713	Union	Fish & Wildlife	Biological Impairment	6/23/17	Near Pinedale from headwaters to the confluence with unnamed tributary just downstream of County Road 46	2002
Yazoo River	Whites Creek	911911	De Soto, Tunica	Fish & Wildlife	Biological Impairment	6/23/17	Near Prichard from headwaters to the Lake Comorant Bayou	2002

RULE 9.10 TABLE 3 CHANGES MADE SINCE THE 2012 LIST

Basin	Water Body Name	Water Body ID	County	Impaired Use	Pollutant	Location	EPA Approval & NTTS	2014 List
Big Black River	Atwood Creek	103012	Attala	Fish & Wildlife	Biological Impairment	Near Kosciusko from headwaters to mouth at Apookta Creek		moved to category 2 not impaired
Coastal Streams	Gulfport East Beach	250313	Harrison	Recreation	Enterococci	At Gulfport from Teagarden Road east to the eastern side of William Carey College	8/2/2013 54220	moved to category 4A TMDL complete
North Independent Streams	Hatchie River	302411	Alcorn	Fish & Wildlife	pH	Near Walnut from the MWS 3019 boundary to the MS/TN state line	5/28/13 54524	moved to category 4A TMDL complete
North Independent Streams	Tuscumbia River Canal	301211	Alcorn	Fish & Wildlife	pH	At Hwy 72 from confluence with Eastes Creek to confluence with Tarebreeches Creek	5/28/13 54525	moved to category 4A TMDL complete
Pascagoula River	Black Creek	421111	Perry, Stone	Recreation	Pathogens	From confluence of Cypress Creek to MWS 4215 boundary	8/29/12 42662	moved to category 4A TMDL complete
Pascagoula River	Chunky Creek	401811	Newton	Fish & Wildlife	Biological Impairment	From confluence with Smith Branch to mouth at Okahatta Creek		Moved to category 2 not impaired
Pascagoula River	Okatoma Creek	410511	Covington	Fish & Wildlife	pH	At Kola from confluence with Roger Creek to MWS 4107 boundary near Gin Branch	9/26/13 54320	moved to category 4A TMDL complete
Pascagoula River	Reese Creek	416213	Forrest	Fish & Wildlife	Organic Enrichment / Low DO	Near Hattiesburg from headwaters to Temple Road	5/28/13 54520	moved to category 4A TMDL complete
Pascagoula River	Unnamed Tributary Of Leaf River	416511	Perry	Fish & Wildlife	Sediment	At Beaumont from headwaters to mouth at Leaf River	11/5/12 54180	moved to category 4A TMDL complete
Pearl River	Indian Creek	510212	Rankin	Fish & Wildlife	Cadmium	Near Pearl from headwaters to confluence with Steen Creek	8/2/13 54240	moved to category 4A TMDL complete
Pearl River	Indian Creek	510212	Rankin	Fish & Wildlife	Lead	Near Pearl from headwaters to confluence with Steen Creek	4/16/14	moved to category 4A TMDL complete

Mississippi 2014 Section 303(d) List of Impaired Water Bodies

Pearl River	White Sand Creek	516111	Jefferson Davis	Fish & Wildlife	Biological Impairment	From confluence with Little White Sand Creek (Jaybird Creek) to mouth at Pearl River		moved to category 2 not impaired
Tennessee River	Caney Creek	700312	Tishomingo	Fish & Wildlife	Biological Impairment	Near Iuka from headwaters to confluence with Leitch Mill Creek		moved to category 2 not impaired
Tennessee River	Holly Branch	701211	Tishomingo	Fish & Wildlife	Biological Impairment	Near Iuka from headwaters to mouth at Cedar Creek		moved to category 2 not impaired
Tombigbee River	Greenwood Creek	802611	Lee, Itawamba	Fish & Wildlife	Biological Impairment	Near Evergreen from headwaters to Bogue Fala	5/30/13	completed stressor id and TMDL
Tombigbee River	Greenwood Creek	802611	Lee, Itawamba	Fish & Wildlife	Sediment	Near Evergreen from headwaters to Bogue Fala		moved to category 4A TMDL complete
Tombigbee River	Red Bud Creek	800312	Tishomingo, Prentiss	Fish & Wildlife	Biological Impairment	Near Belmont from headwaters to the Ten-Tom Waterway		moved to category 2 not impaired
Tombigbee River	Roberts Branch	805912	Lee	Fish & Wildlife	Biological Impairment	At Nettleton from headwaters to confluence with Cowpenna Creek	5/30/13	completed stressor id and TMDL
Tombigbee River	Roberts Branch	805912	Lee	Fish & Wildlife	Sediment	At Nettleton from headwaters to confluence with Cowpenna Creek		moved to category 4A TMDL complete
Tombigbee River	Tubbalubba Creek	805812	Lee, Monroe	Fish & Wildlife	Biological Impairment	Near Shannon from headwaters to mouth at Tallinnella and Chiwapa Creeks	5/30/13	completed stressor id and TMDL
Tombigbee River	Tubbalubba Creek	805812	Lee, Monroe	Fish & Wildlife	Sediment	Near Shannon from headwaters to mouth at Tallinnella and Chiwapa Creeks		moved to category 4A TMDL complete
Yazoo River	Cane Creek	916811	Grenada	Recreation	Pathogens	From headwaters to mouth at Yalobusha River	8/2/13 54261	moved to category 4A TMDL complete
Yazoo River	Lead Bayou	951211	Bolivar	Fish & Wildlife	Organic Enrichment / Low DO	From headwaters at Entergy cooling pond to mouth at Horseshoe Bayou	9/26/13 54525	moved to category 4A TMDL complete
Yazoo River	Swiftwater Bayou	952811	Washington	Fish & Wildlife	Organic Enrichment / Low DO	From channel crossing near Slago Dairy Road to mouth at Black Bayou	2/25/14	moved to category 4A TMDL complete

Mississippi 2014 Section 303(d) List of Impaired Water Bodies

Yazoo River	Turkey Bayou	951611	Leflore	Fish & Wildlife	Specific Conductivity	Near Itta Bena from Lake Henry to mouth at Quiver River	5/28/13 54181	moved to category 4A TMDL complete
Yazoo River	Turkey Creek	MS336TE	Yalobusha	Recreation	Pathogens	Near Coffeeville from headwaters to Grenada Lake Flood Pool	5/28/13 54301	moved to category 4A TMDL complete
Yazoo River	Wild Bill Bayou	951411	Sunflower	Fish & Wildlife	Organic Enrichment / Low DO	From headwaters to mouth at Quiver River	8/2/13 54260	moved to category 4A TMDL complete

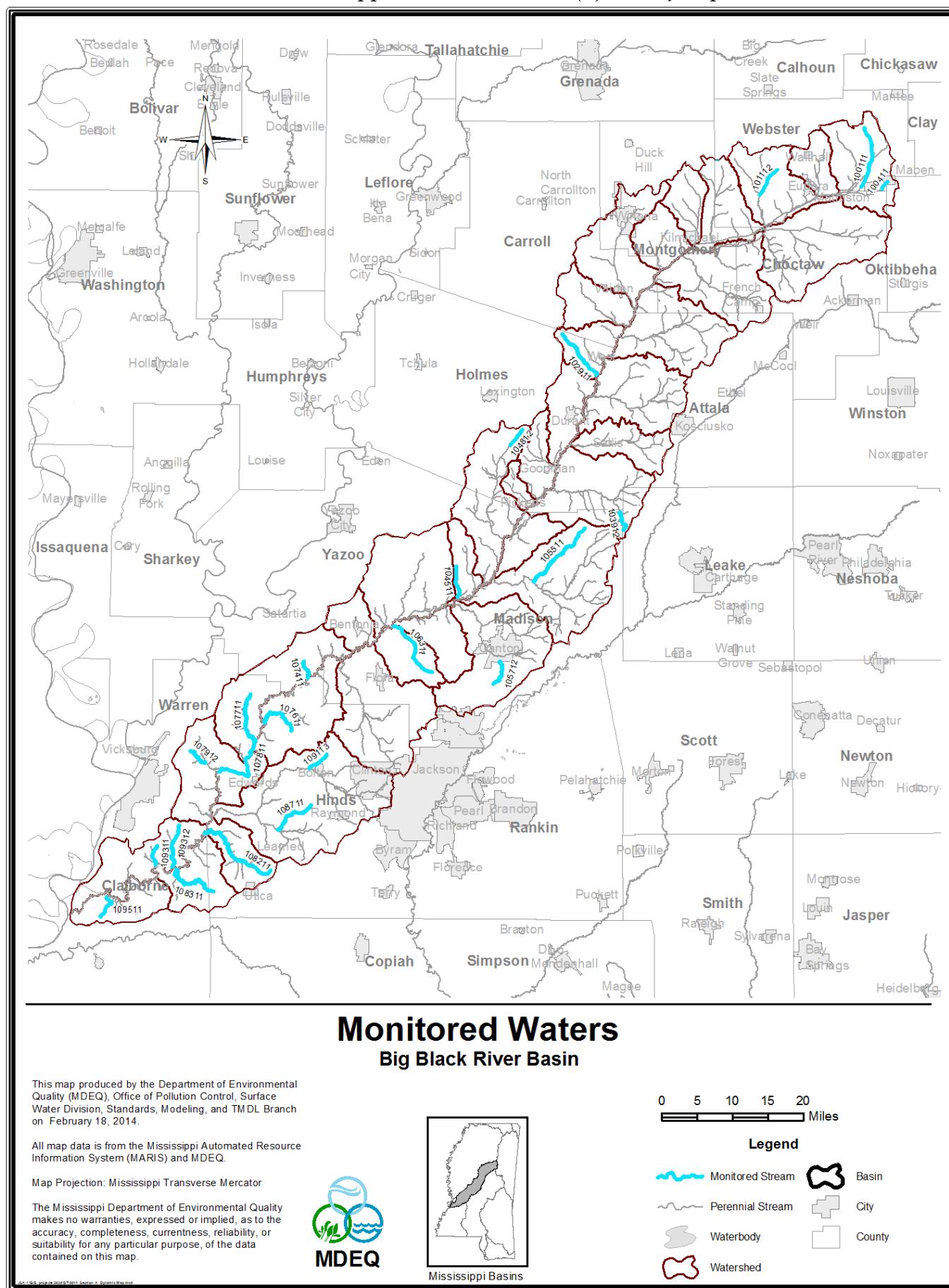
REFERENCES

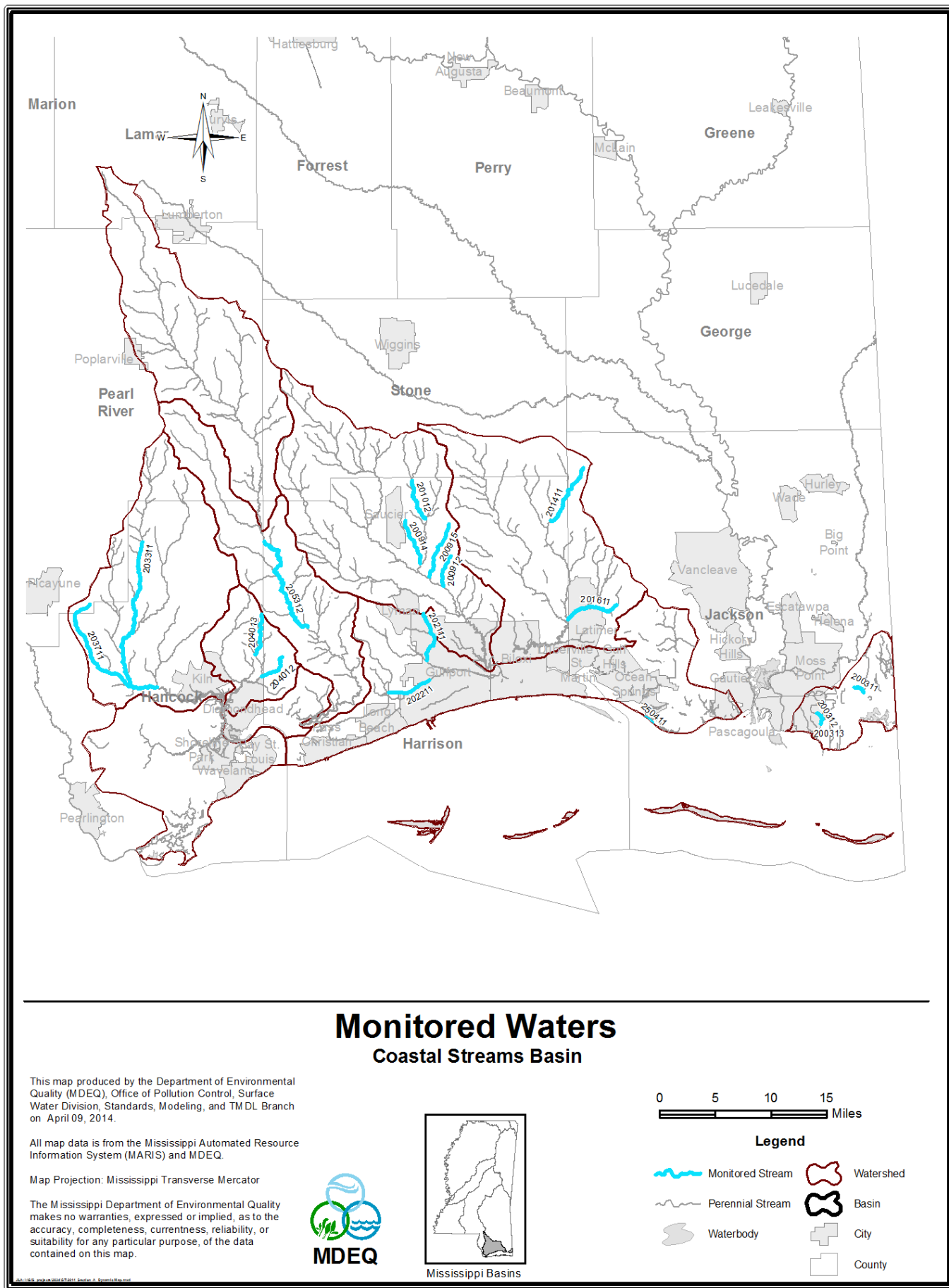
- MDEQ. 2003. *Development and Application of the Mississippi Benthic Index of Stream Quality (M-BISQ)*. Office of Pollution Control.
- MDEQ. 2007. *Mississippi 2006 Section 303(d) List of Impaired Water Bodies*. Office of Pollution Control.
- MDEQ. 2008. *Mississippi 2008 Section 303(d) List of Impaired Water Bodies*. Office of Pollution Control.
- MDEQ. 2013. *MISSISSIPPI CALM (Consolidated Assessment and Listing Methodology) 2014 Assessment and Listing Cycle*. Office of Pollution Control.
- MDEQ. 2006. *NRCS State Watershed Map and Table*. Office of Pollution Control.
- MDEQ. 2012. *State of Mississippi Water Quality Criteria for Intrastate, Interstate and Coastal Waters*. Office of Pollution Control.
- MDEQ. 2006. *USGS and MDEQ State 12 Digit Watershed Atlas*. Office of Pollution Control.

APPENDIX A ATLAS

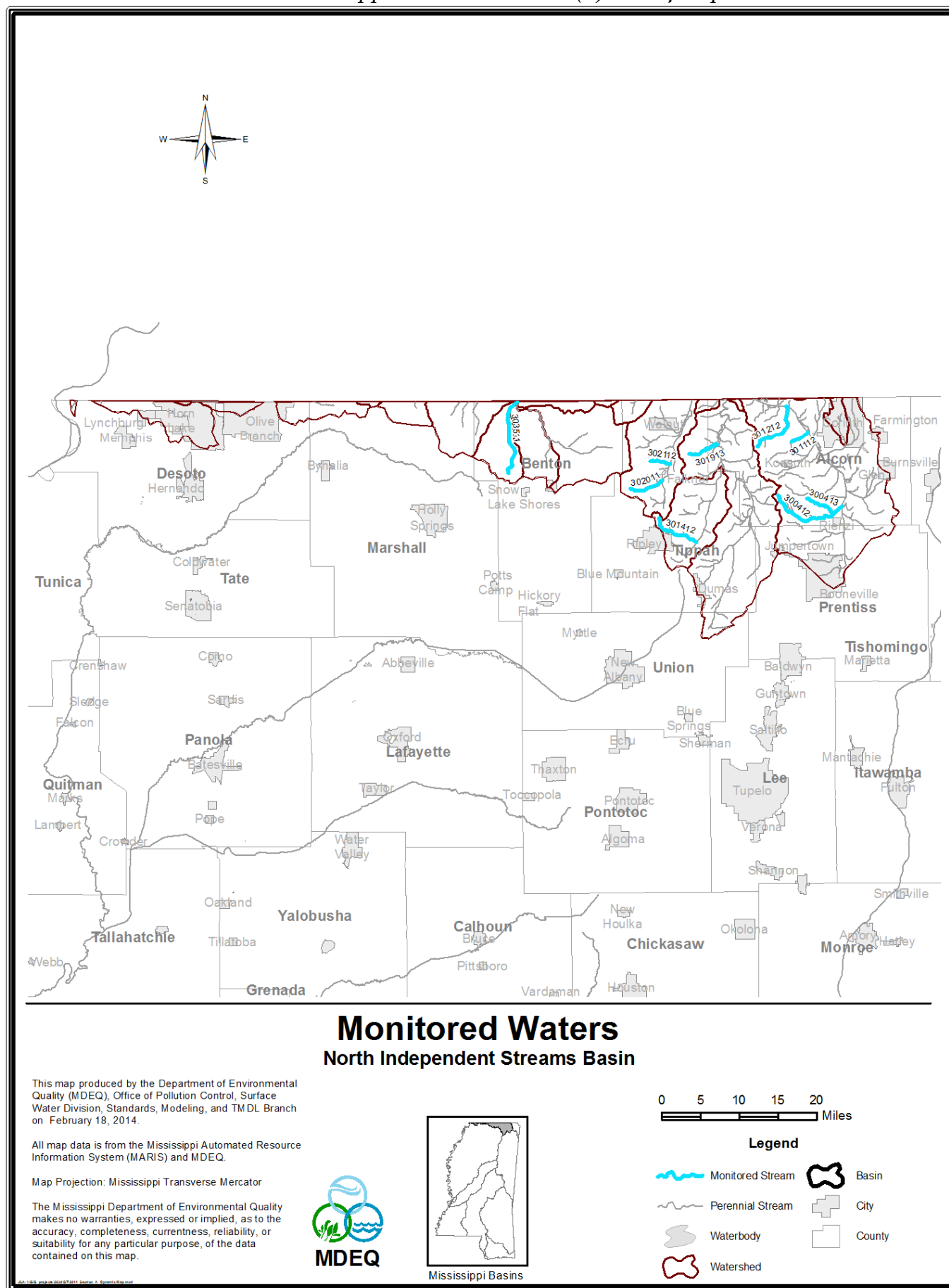
Maps are included in Appendix A for each basin. Streams shown in blue are impaired streams. In some river basins, the maps were split into 8-digit Hydrologic Unit Codes to better fit the page. Basins with no current listings are not included.

Mississippi 2014 Section 303(d) List of Impaired Water Bodies

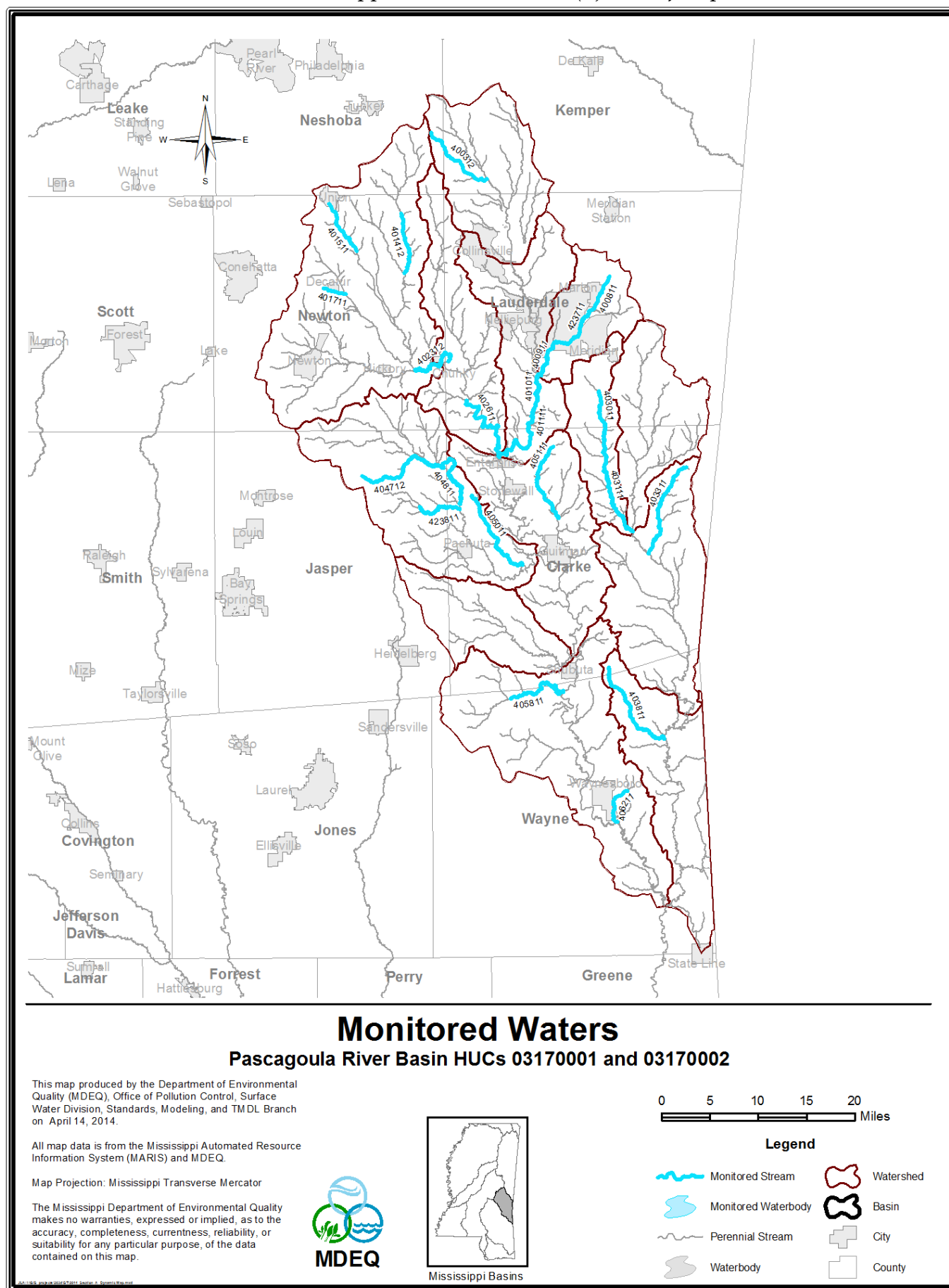




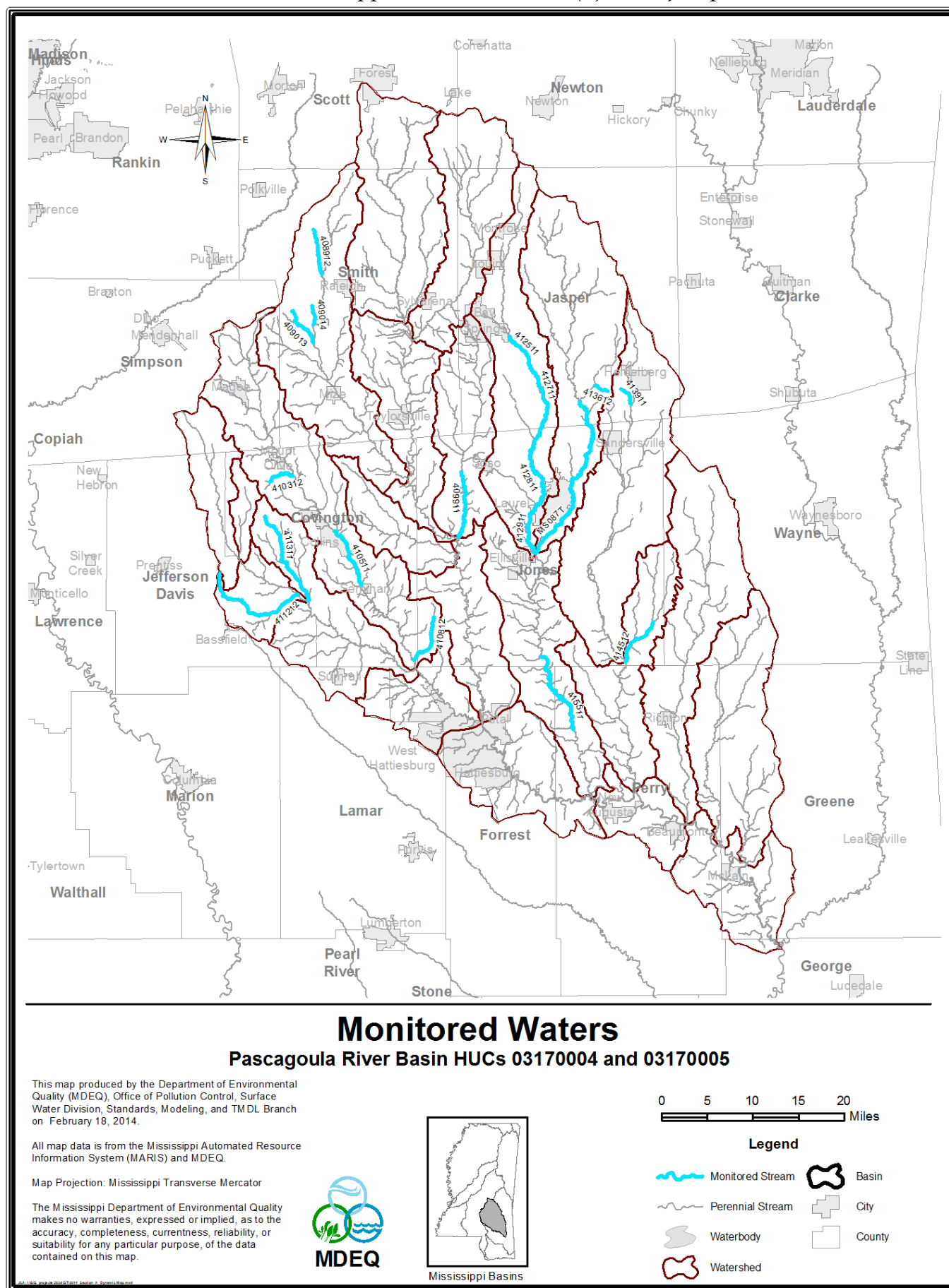
Mississippi 2014 Section 303(d) List of Impaired Water Bodies



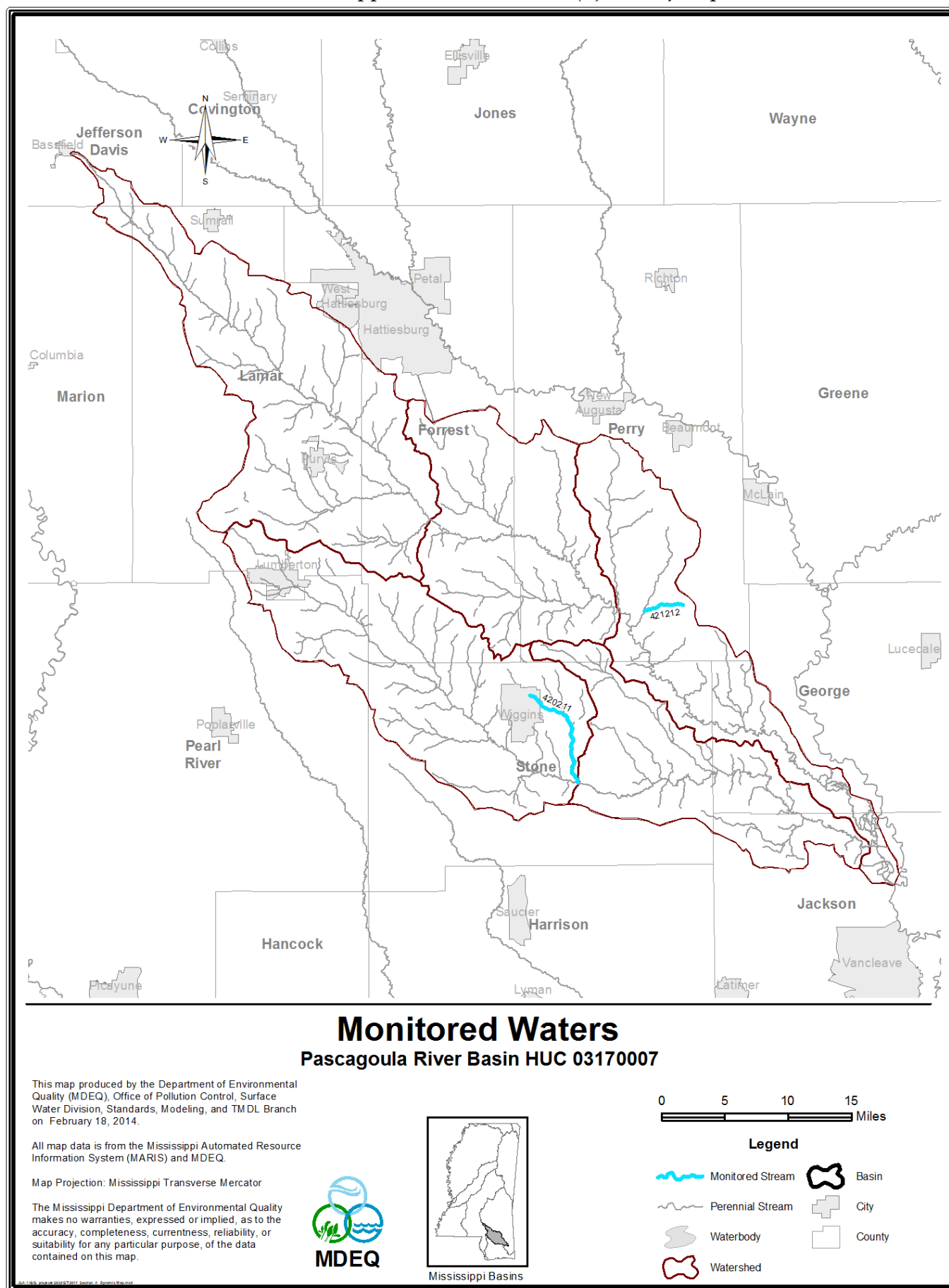
Mississippi 2014 Section 303(d) List of Impaired Water Bodies



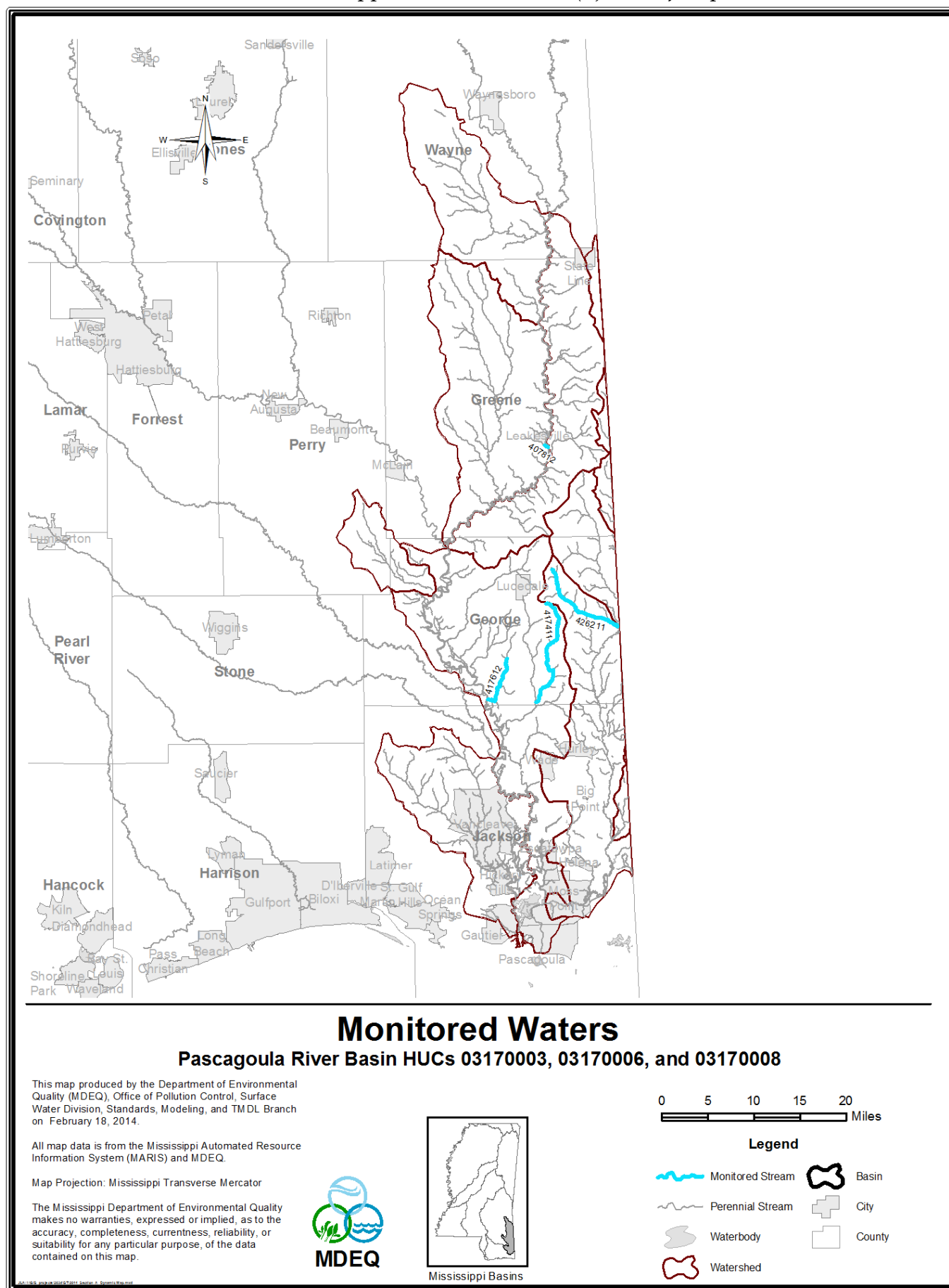
Mississippi 2014 Section 303(d) List of Impaired Water Bodies



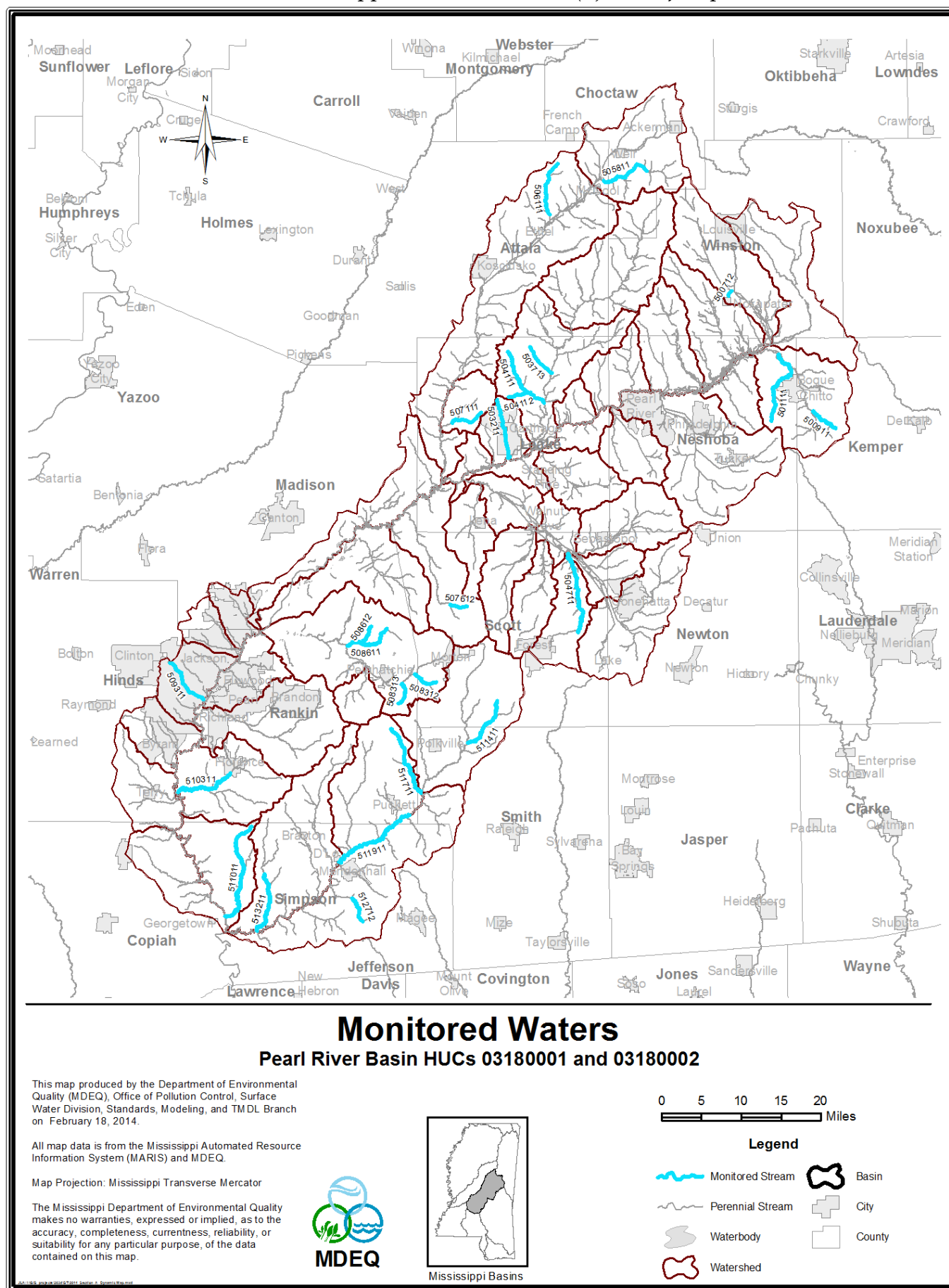
Mississippi 2014 Section 303(d) List of Impaired Water Bodies



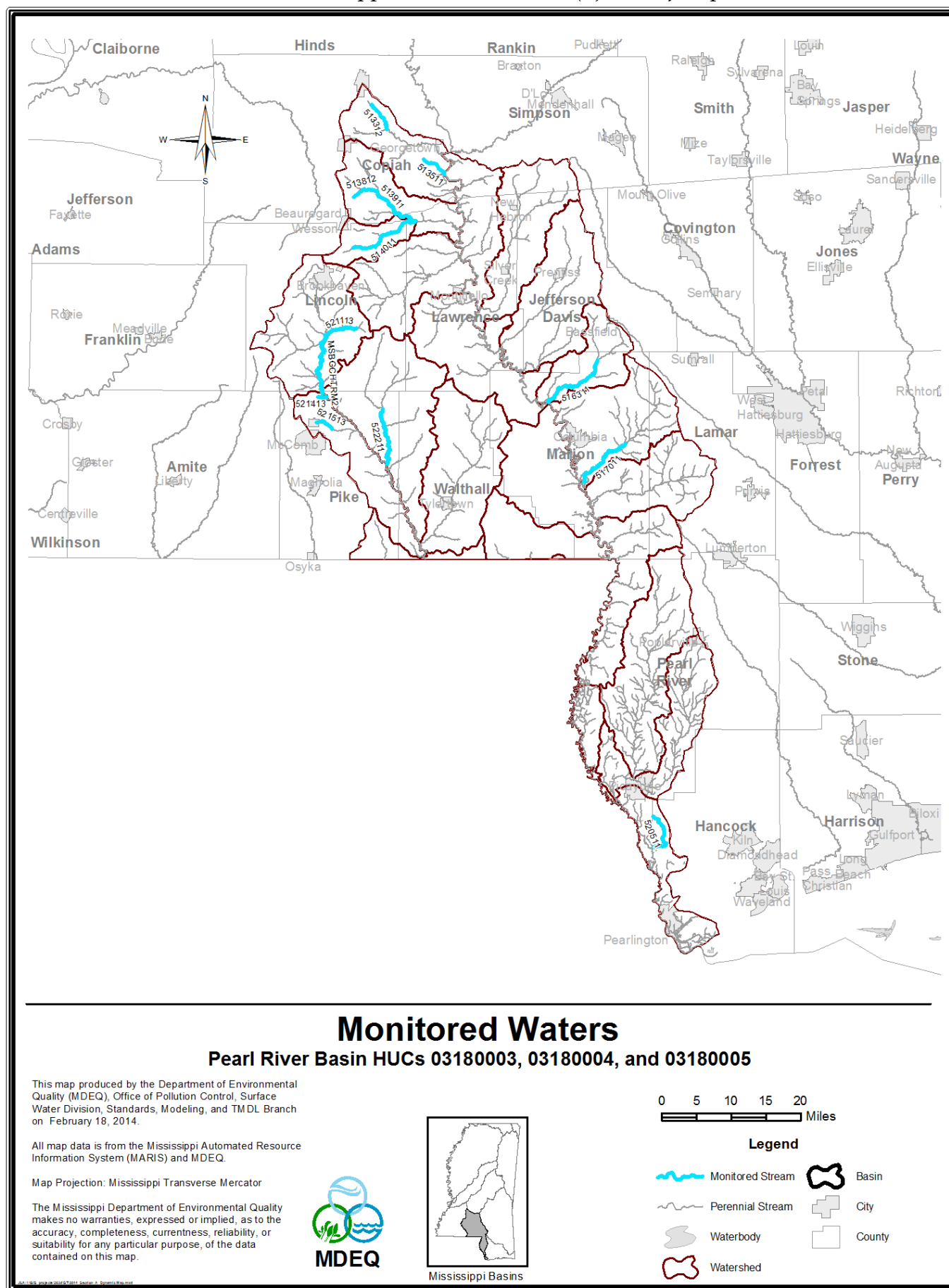
Mississippi 2014 Section 303(d) List of Impaired Water Bodies



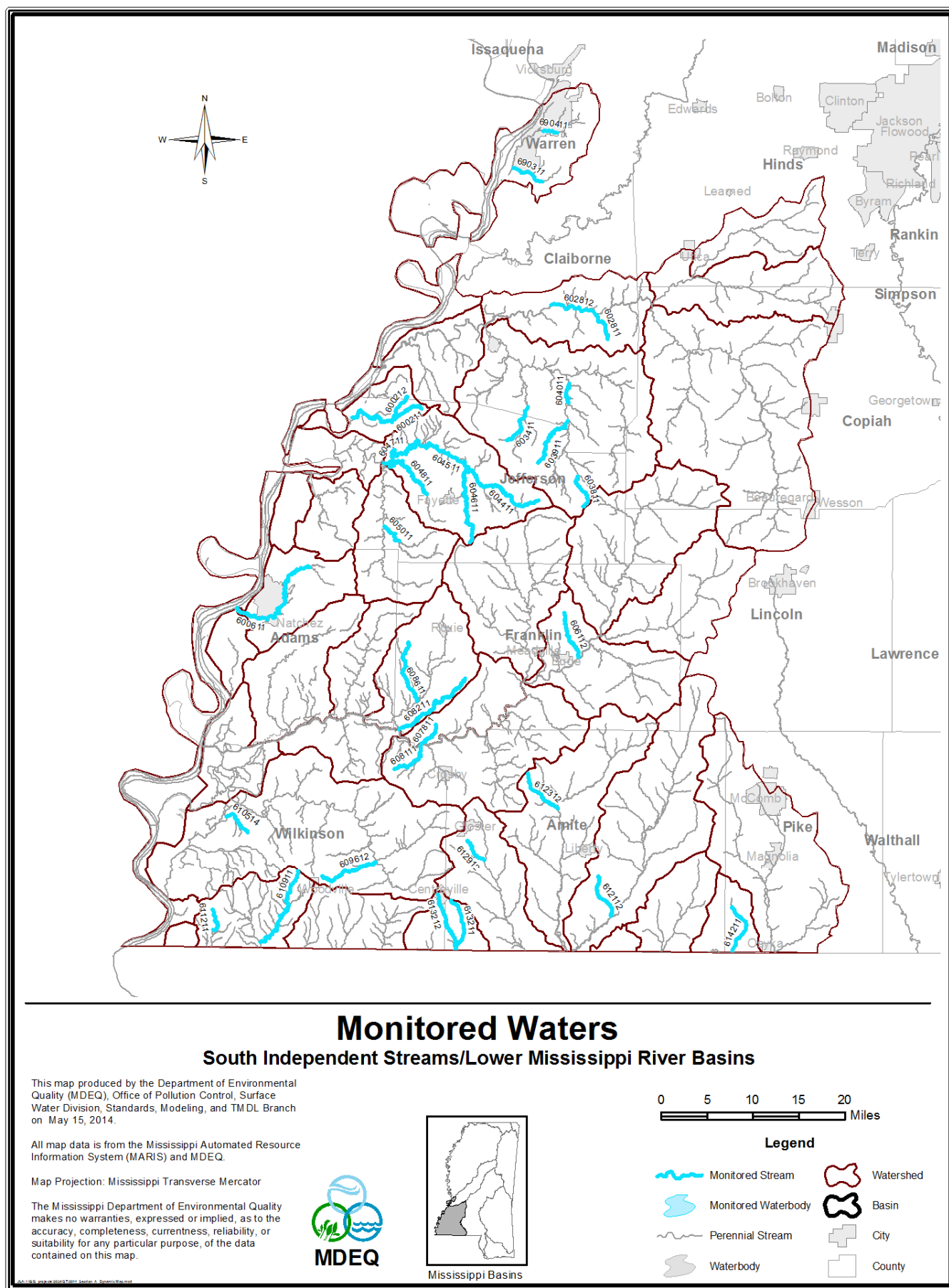
Mississippi 2014 Section 303(d) List of Impaired Water Bodies

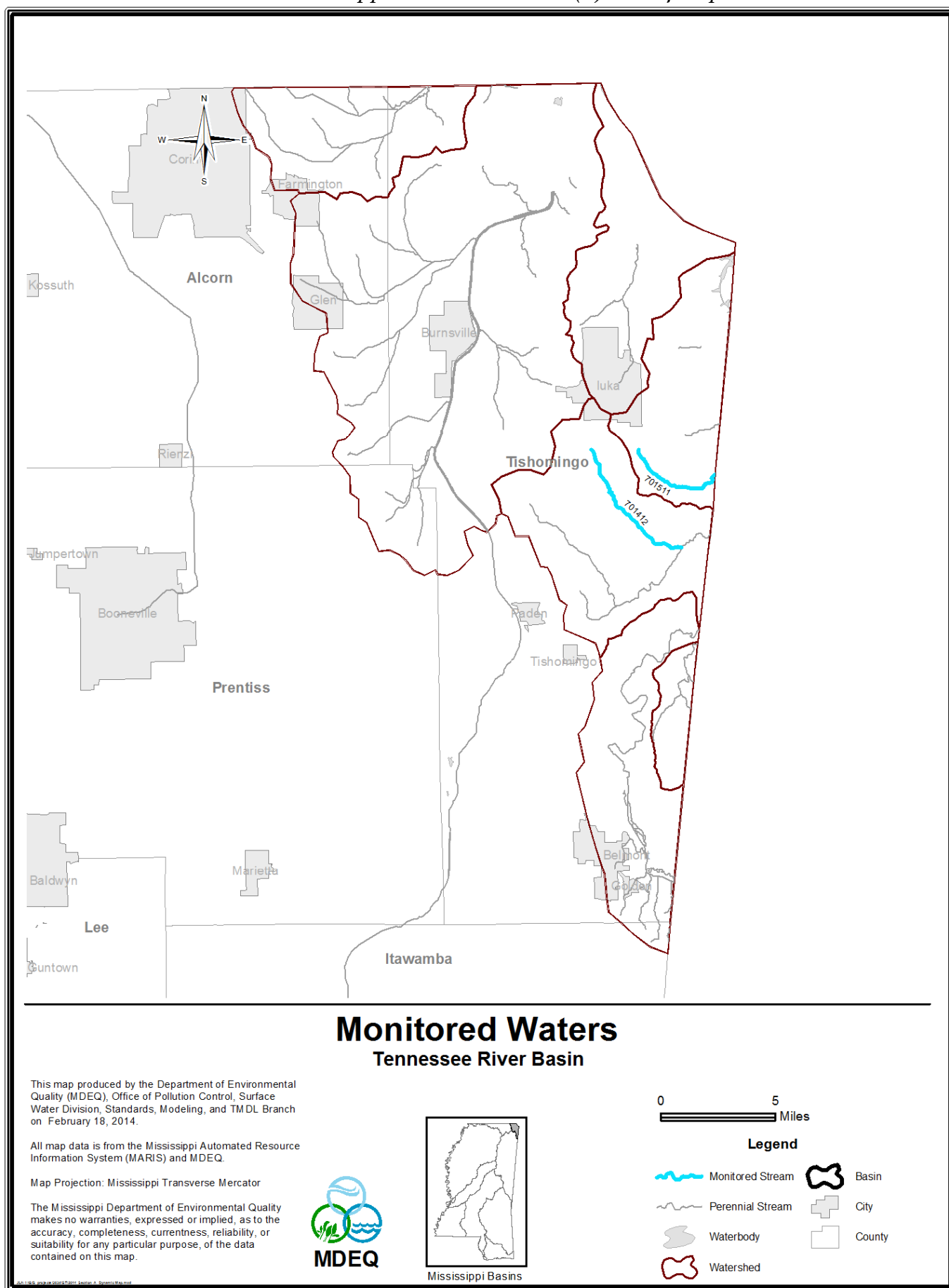


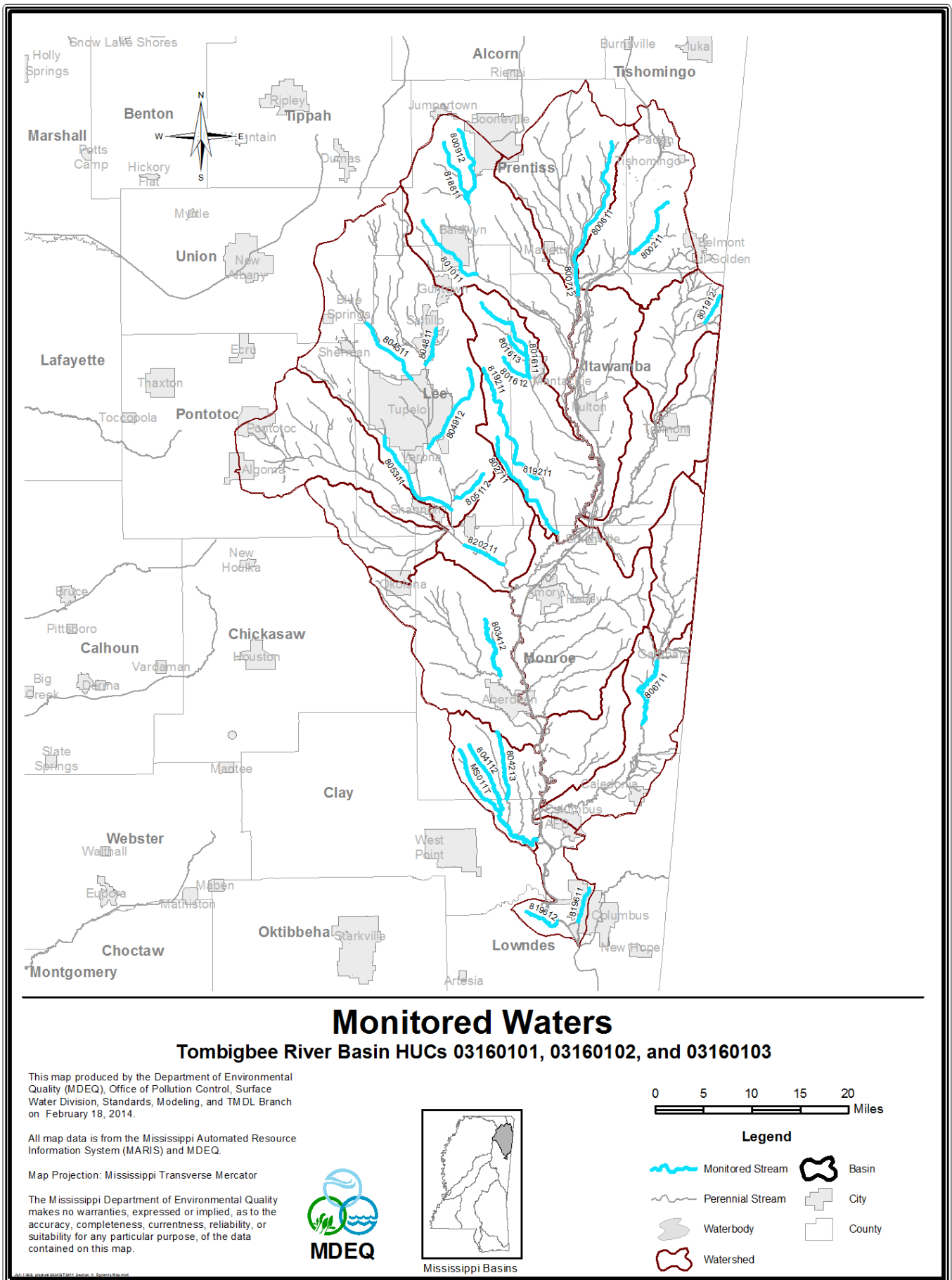
Mississippi 2014 Section 303(d) List of Impaired Water Bodies



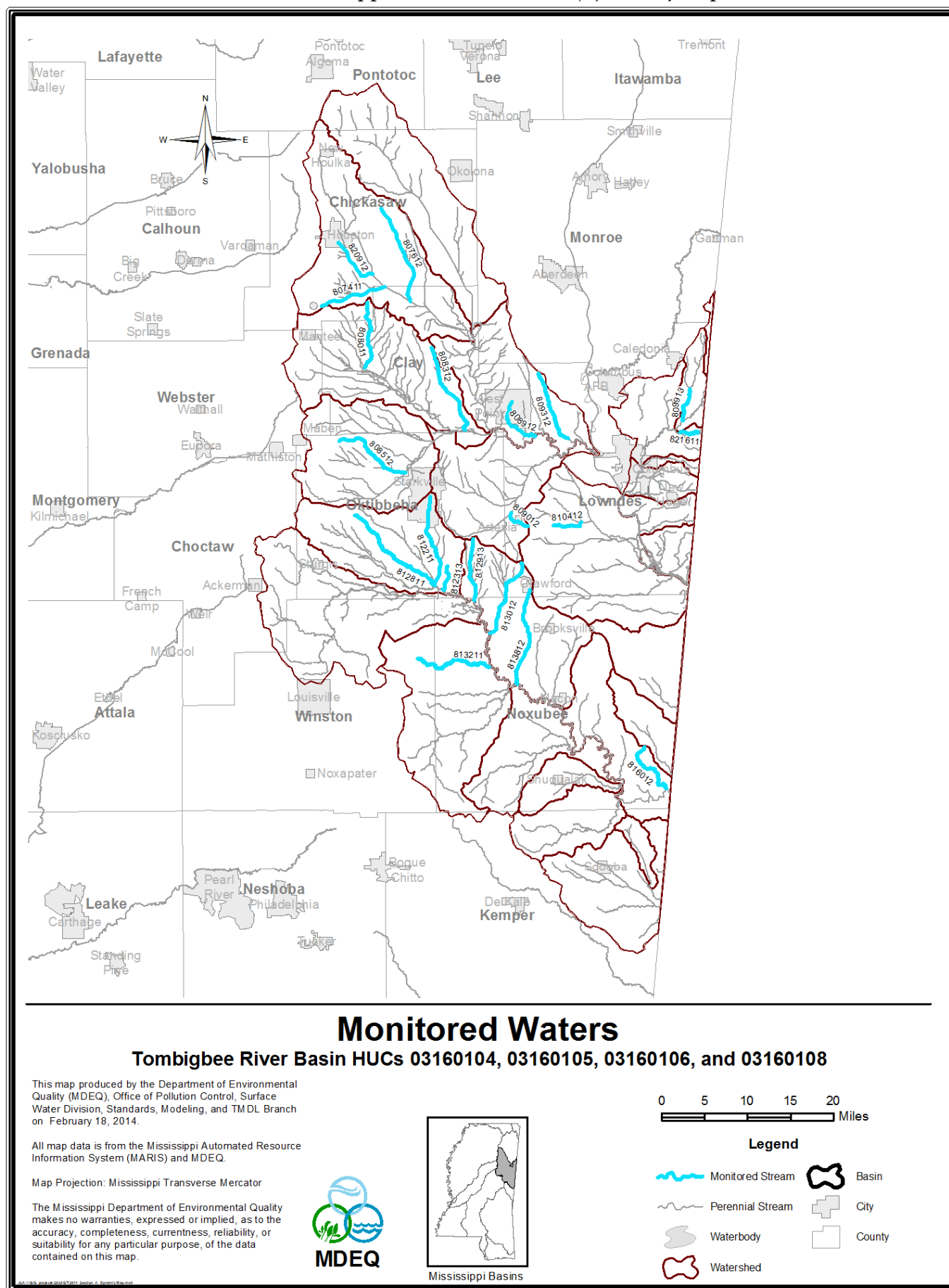
Mississippi 2014 Section 303(d) List of Impaired Water Bodies



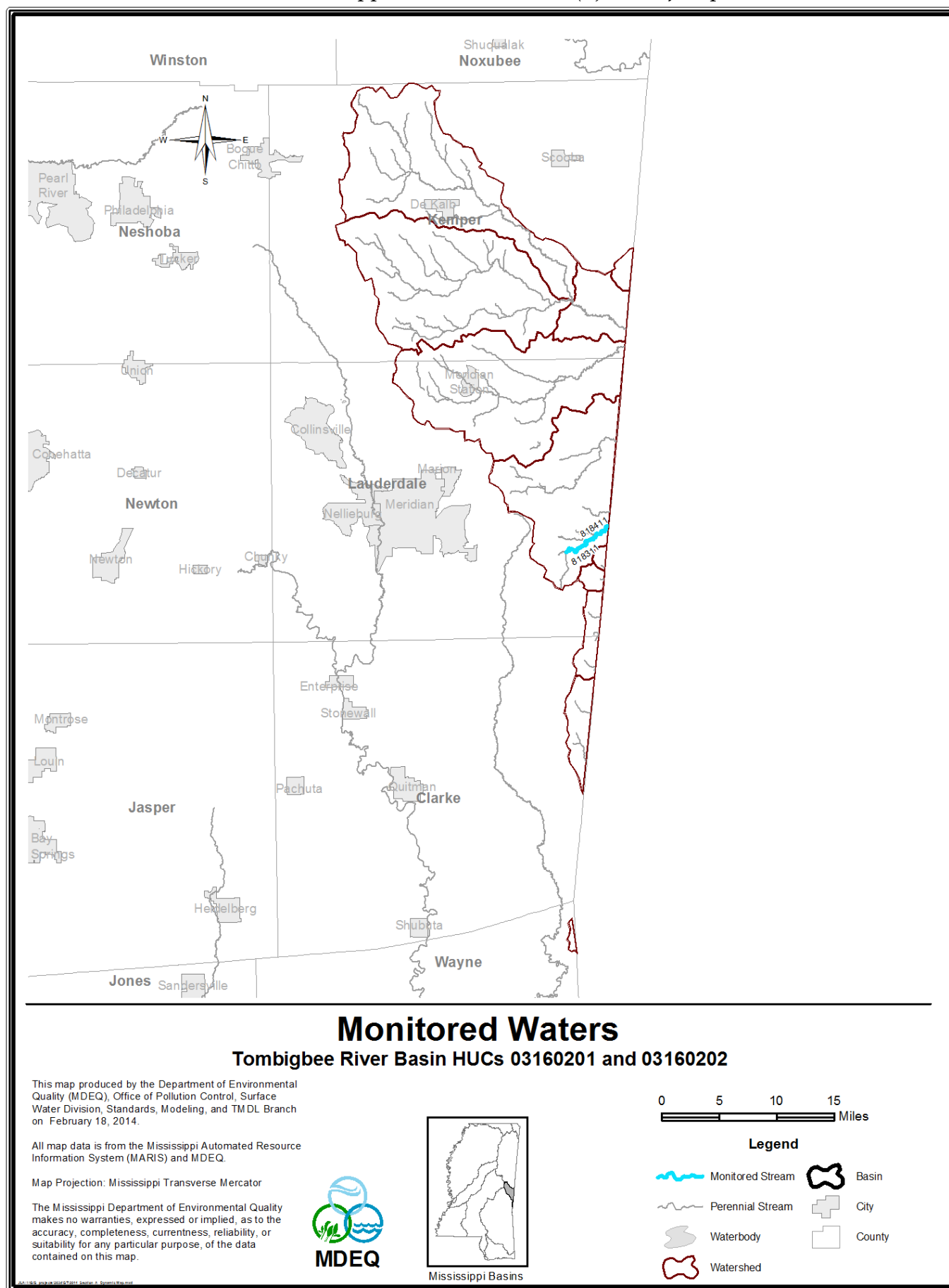




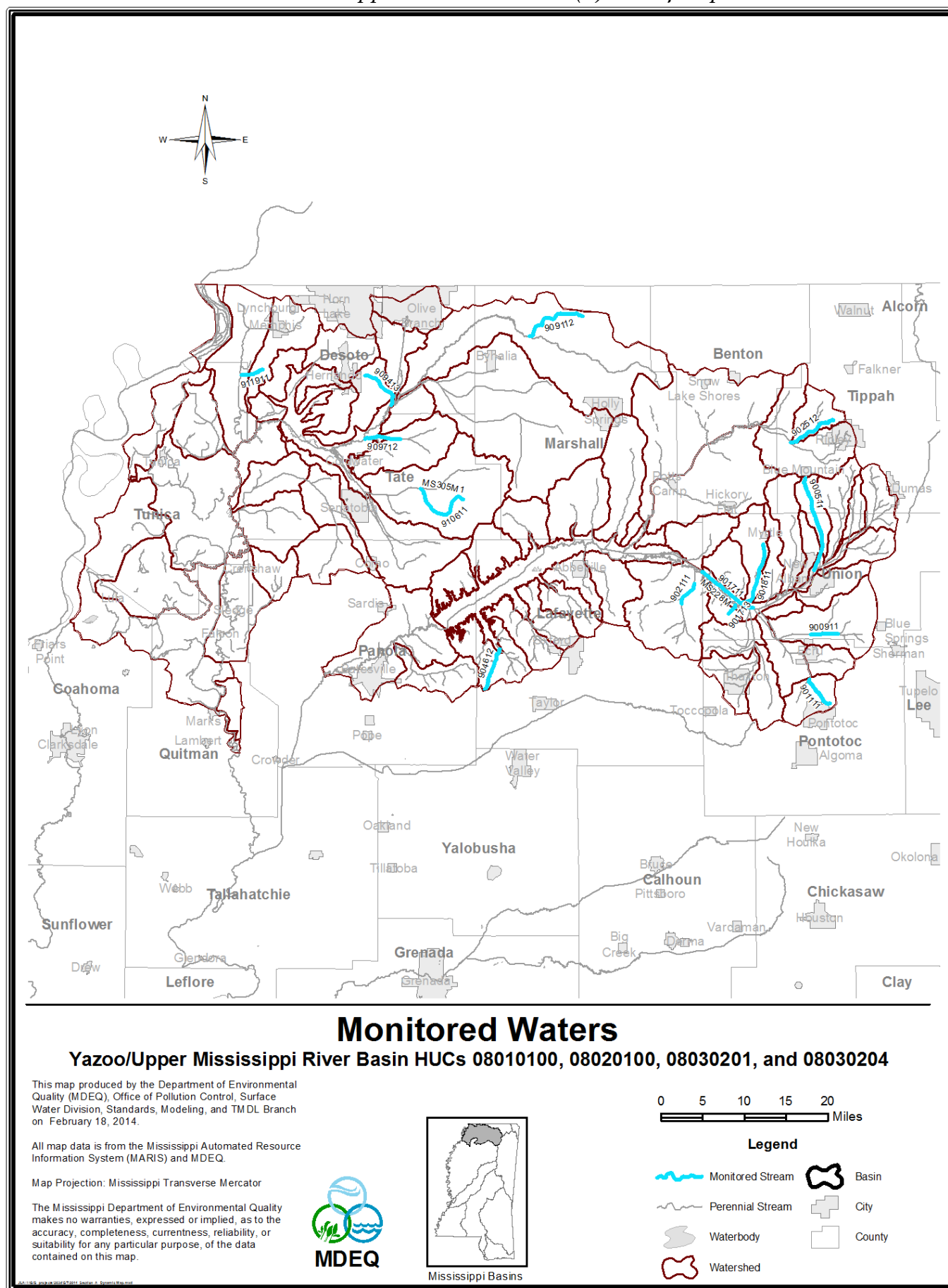
Mississippi 2014 Section 303(d) List of Impaired Water Bodies

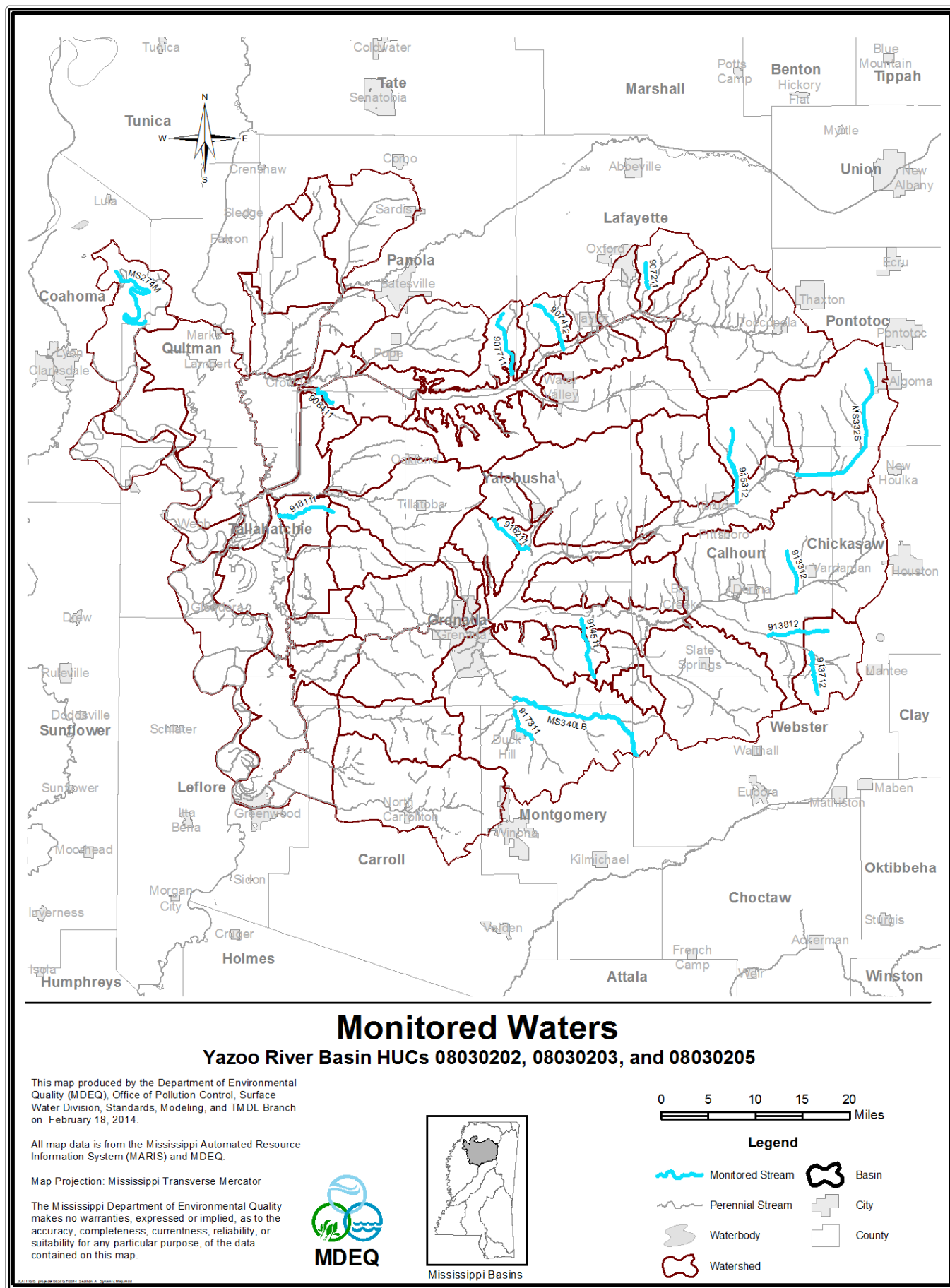


Mississippi 2014 Section 303(d) List of Impaired Water Bodies

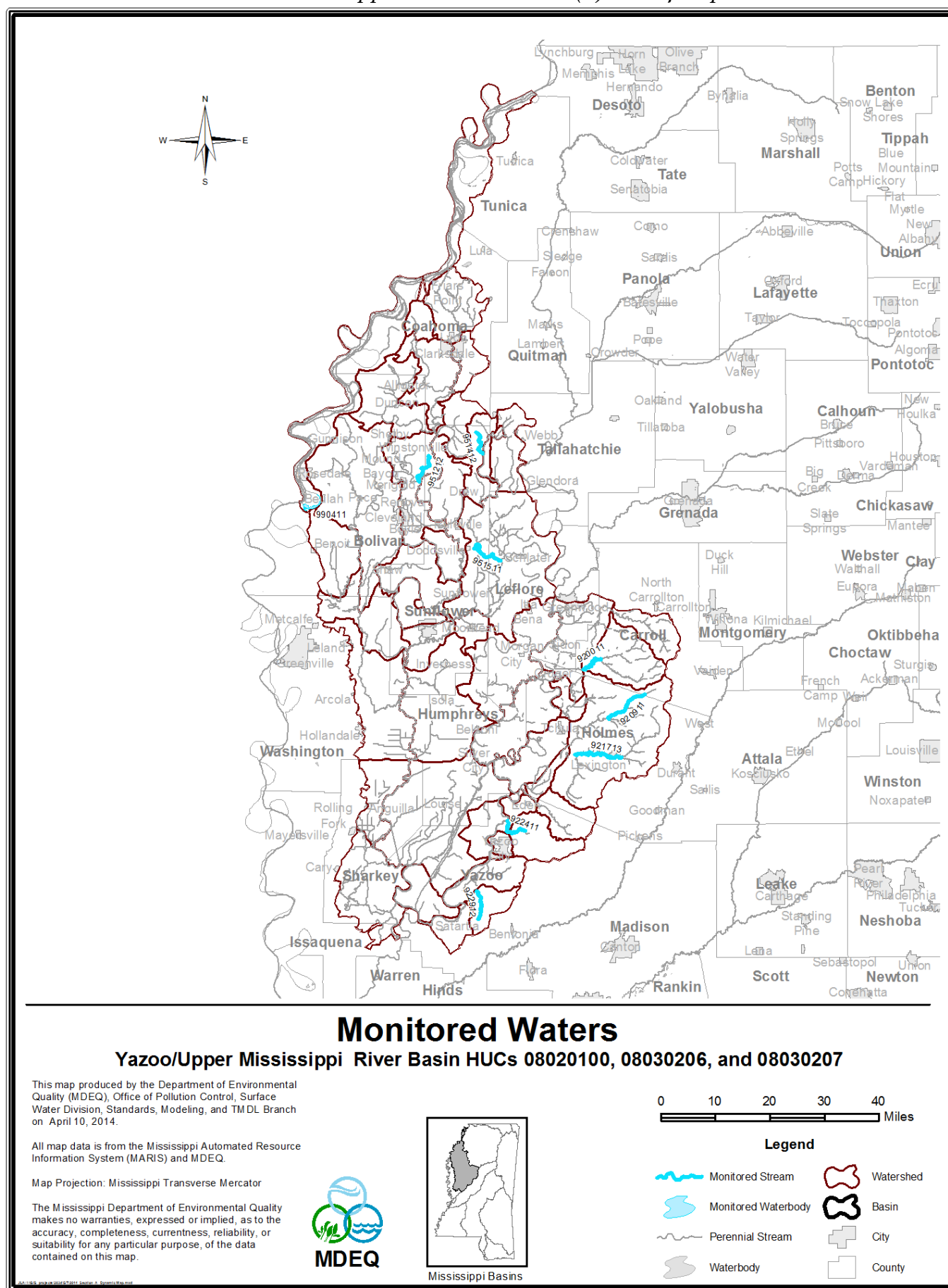


Mississippi 2014 Section 303(d) List of Impaired Water Bodies





Mississippi 2014 Section 303(d) List of Impaired Water Bodies



Mississippi 2014 Section 303(d) List of Impaired Water Bodies

