

ADOPTED
June 2016



Mississippi 2016 Section 303(d) List of Impaired Water Bodies

**Title 11: Mississippi Department of Environmental Quality
Part 6: Wastewater Pollution Control Regulations
Part 6, Chapter 9: Mississippi Commission on Environmental Quality,
Mississippi 2016 Section 303(d) List of Impaired Water Bodies**

FINAL LIST Version 2.0

Prepared by
MISSISSIPPI DEPARTMENT OF ENVIRONMENTAL QUALITY
SURFACE WATER DIVISION OF THE OFFICE OF POLLUTION CONTROL



MDEQ ■ PO Box 2261 ■ Jackson MS 39225-2261 ■ (601) 961-5171

Title 11: Mississippi Department of Environmental Quality

Part 6: Wastewater Pollution Control Regulations

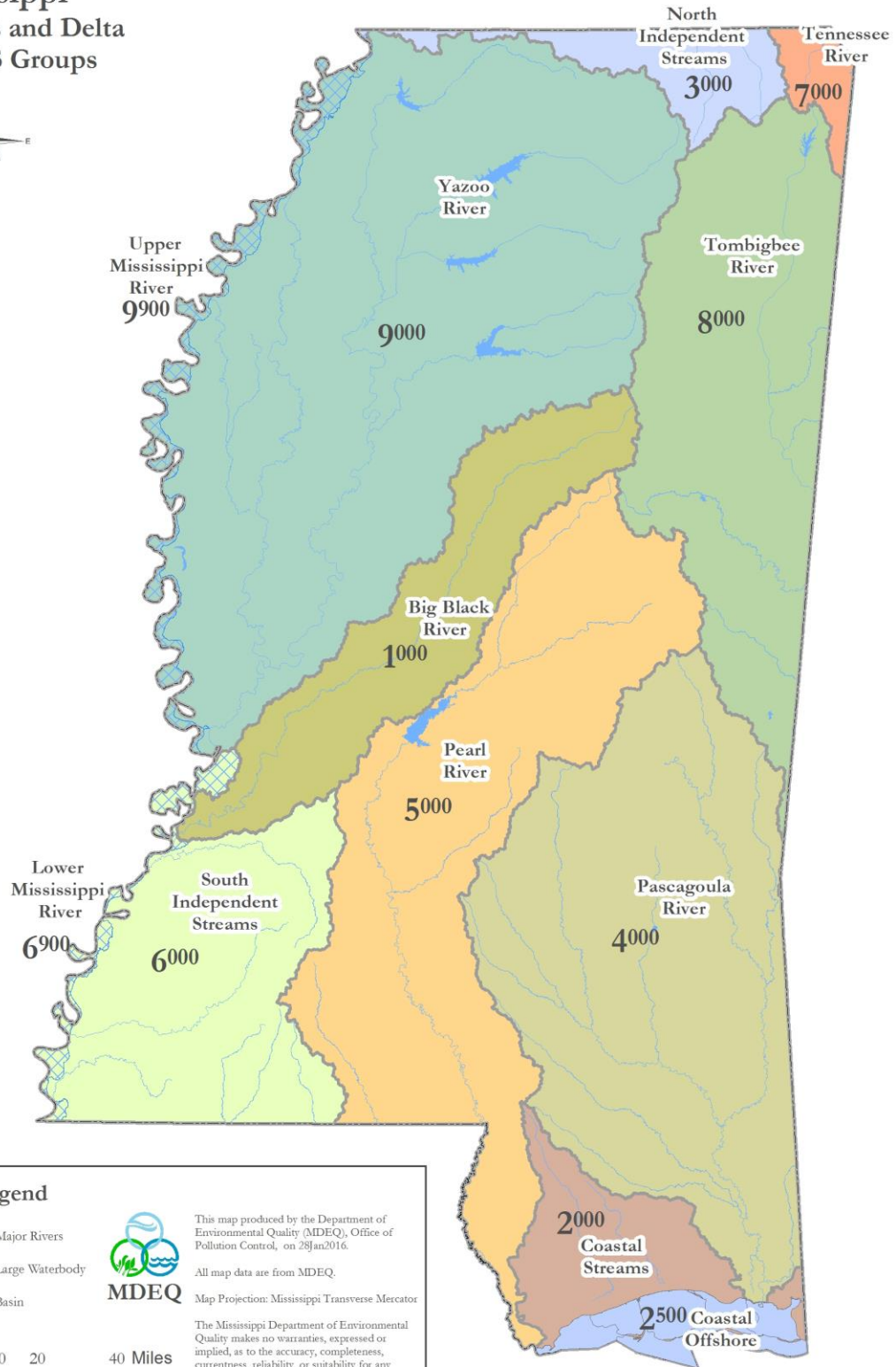
**Part 6, Chapter 9: Mississippi Commission on Environmental Quality
Mississippi 2016 Section 303(d) List of Impaired Water Bodies**

TABLE OF CONTENTS

<u>RULE 9.1 INTRODUCTION</u>	5
<u>RULE 9.2 REGULATORY REQUIREMENT</u>	5
<u>RULE 9.3 ASSESSMENT METHODOLOGY</u>	5
A. CONSOLIDATED ASSESSMENT LISTING METHODOLOGY (CALM)	5
B. DESIGNATED USES	6
TABLE 1 WATER BODY CLASSIFICATION	6
C. WATER QUALITY STANDARDS	7
D. ASSESSMENT CATEGORIES	7
TABLE 2 ASSESSMENT CATEGORIES	7
E. MONITORING DATA	8
<u>RULE 9.4 FISH AND SHELLFISH CONSUMPTION ADVISORIES AND IMPAIRED WATERS</u>	8
<u>RULE 9.5 LAYOUT OF THE TABLES</u>	9
A. STREAM LISTINGS	9
B. POLLUTANTS INCLUDED	9
C. POLLUTANT SOURCE	9
D. CHANGES MADE FOR 2016	9
<u>RULE 9.6 WATER BODY IDENTIFICATION NUMBERS</u>	11
A. HISTORICAL NUMBERING SYSTEM	11
B. CURRENT NUMBERING SYSTEM	11
C. BASIN MAPS	11
<u>RULE 9.7 TMDLS SCHEDULED FOR THE NEXT TWO YEARS</u>	11
TABLE 3 TMDLS SCHEDULED FOR 2016 AND 2017	13

<u>RULE 9.8 PUBLIC PARTICIPATION AND APPROVAL PROCESS</u>	<u>13</u>
<u>RULE 9.9 IMPAIRED WATERS LISTING</u>	<u>15</u>
TABLE 4 IMPAIRED WATERS	15
<u>RULE 9.10 CHANGES MADE SINCE THE 2014 LIST</u>	<u>36</u>
TABLE 5 CHANGES MADE SINCE THE 2014 LIST	36
<u>REFERENCES</u>	<u>42</u>
<u>APPENDIX A ATLAS</u>	<u>43</u>

Mississippi River Basins and Delta with MWS Groups



Legend

- Major Rivers
- Large Waterbody
- Basin

This map produced by the Department of Environmental Quality (MDEQ), Office of Pollution Control, on 28Jan2016.
 All map data are from MDEQ.
 Map Projection: Mississippi Transverse Mercator

The Mississippi Department of Environmental Quality makes no warranties, expressed or implied, as to the accuracy, completeness, currentness, reliability, or suitability for any particular purpose of the data contained on this map.

0 10 20 40 Miles

RULE 9.1 INTRODUCTION

Mississippi's 2016 Section 303(d) List of Impaired Water Bodies fulfills the state's obligation with respect to §303(d) of the Federal Clean Water Act to develop a listing of the state's impaired waters. MDEQ provides two reports, this §303(d) list and a §305(b) report. These are not physically integrated, but the lists are meant to have a one-to-one relationship in that all of the water body segments found in the §305(b) report listed in category 5 are also listed in this document. The impaired water bodies are shown in Table 4 of this §303(d) document. These basins are shown on the map on page 4.

1. Big Black River Basin
2. Coastal Streams Basin
3. North Independent Streams Basin
4. Pascagoula River Basin
5. Pearl River Basin
6. South Independent Streams and Lower Mississippi River Basins
7. Tennessee River Basin
8. Tombigbee River Basin
9. Yazoo River and Upper Mississippi River Basins

Source: Miss. Code Ann. §§ 49-2-1, *et seq.* and 49-17-1, *et seq.*

RULE 9.2 REGULATORY REQUIREMENT

Section 303(d) of the Clean Water Act and the implementing federal regulations at 40 C.F.R. §130.7 require the state to identify those waters within its jurisdiction for which effluent limitations are not sufficient to implement one or more applicable water quality standards and for which TMDLs are not yet completed. The state is to establish a priority ranking for such waters, taking into account the severity of the pollution and the designated uses to be made of such waters.

Source: Miss. Code Ann. §§ 49-2-1, *et seq.* and 49-17-1, *et seq.*

RULE 9.3 ASSESSMENT METHODOLOGY

A. Consolidated Assessment Listing Methodology (CALM)

All data used to make formal assessments of the quality of the state's waters, regardless of its source, are evaluated in keeping with the requirements and guidelines in the state's *Mississippi CALM [Consolidated Assessment Listing Methodology] for 2016*, [CALM] (MDEQ, 2015). The 2016 CALM can be found online at

http://deq.state.ms.us/MDEQ.nsf/page/FS_SurfaceWaterQualityAssessments?OpenDocument

Monitoring data and information that may be considered when assessing state waters could include chemical, physical, bacteriological, toxicological, and/or biological (e.g., macroinvertebrate, fish, and algal community measurements) data. In addition to using MDEQ-generated data, MDEQ solicits and considers all readily available data and information within the assessment window collected by other Federal, State, local agencies/organizations, and the public. This data solicitation effort is facilitated through MDEQ's Basin Management Approach.

B. Designated Uses

The water quality assessment process begins with the collection and compilation of the available data followed by the analysis of water quality data and information for the purpose of determining the quality of the state's surface water resources. Surface waters in Mississippi are used for a number of purposes. Waters are used for drinking water supply, shellfish harvesting, recreation, fishing, and aquatic life use support (ALUS). Water bodies are designated and assigned various use classifications by MDEQ in the state's Water Quality Standards (11 Miss. Admin. Code Pt. 6, Ch. 2) {WQS}. This designation is made based on the use(s) of the water body as identified by the public and other entities. The use classifications and associated USEPA designated uses for water quality assessment purposes recognized by the State of Mississippi are given in Table 1.

Table 1 Water Body Classification

Water Body Classification	USEPA Associated Designated Use
Public Water Supply	Drinking Water Supply
Recreation	Contact Recreation
Fish and Wildlife	Aquatic Life Use, Fish Consumption, Secondary Contact Recreation
Shellfish Harvesting	Shellfish Consumption

C. Water Quality Standards

Most of Mississippi's waters are classified as Fish and Wildlife. For each of the water body classifications listed above, there are various water quality criteria that apply to those water body uses. These standards are used in the assessment process. A water body (part or all of a stream, river, lake, estuary or coastline) should support one or more of these uses. Mississippi's WQS specify the appropriate levels for which various water quality parameters or indicators support a water body's designated use(s). Each use assessed for a water body is determined to be either "Attaining" or "Not Attaining" in accordance with the applicable water quality standards and EPA guidelines for assessments pursuant to §305(b). Mississippi's WQS may be found here:

http://www.deq.state.ms.us/mdeq.nsf/page/WQSB_Water_Quality_Standards?OpenDocument

D. Assessment Categories

After assessing attainment status of the water body's designated use(s), each water body is assigned to an assessment unit that defines the length of the reach assessed and is placed into one of five assessment categories as per EPA guidance. These categories are summarized in Table 2.

Table 2 Assessment Categories

Assessment Categories	Definitions of Categories
Category 1	Attaining all uses
Category 2	Attaining some uses but there is insufficient data to determine if remaining designated uses are met
Category 3	Insufficient data to determine whether any designated uses are met
Category 4	Not attaining a use but a TMDL is not needed
4A	TMDL has been completed
4B	Other required control measures will result in attainment of WQS
4C	Impairment or threat not caused by a pollutant
Category 5	Not attaining a use and a TMDL is needed
5-alt	Not attaining but assigned a low priority for TMDL development and alternative restoration approach is being pursued

The §303(d) list includes streams that are impaired that do not have completed TMDLs. Once the TMDL is completed, but prior to the stream being restored, MDEQ modifies the assessment category of the stream. An impaired stream without a TMDL is assessed in category 5. A

stream with a TMDL, but still impaired, is assessed in category 4A. The §303(d) lists all of the category 5 waters. For a listing of all assessed waters and their assigned category, please see the §305(b) Water Quality Assessment Report listed below. Completed TMDLs may be found on the TMDL website at:

http://www.deq.state.ms.us/MDEQ.nsf/page/TWB_Total_Maximum_Daily_Load_Section?OpenDocument

http://deq.state.ms.us/MDEQ.nsf/page/FS_SurfaceWaterQualityAssessments?OpenDocument

E. Monitoring Data

Assessments for 2016 are based on current site-specific monitoring data believed to accurately portray existing water quality conditions. A water body is considered monitored if sufficient (in quantity, quality, and frequency) physical, chemical, biological, bacteriological, and/or fish tissue data were collected and assessed on the water body data from January 1, 2010 to December 31, 2014.

Physical and chemical data include such parameters as pH, temperature, dissolved oxygen, toxicants, turbidity, total dissolved solids (TDS), and specific conductance. Biological data include the community structure of aquatic insects, other macroinvertebrates, fish, and/or algae. Bacteriological data include water column surveys for fecal coliform bacteria, *E. coli*, or enterococci bacteria. Fish tissue data include the analyses of fish flesh for the presence of toxic organic chemicals and metals. The length of record of the data, the quality of the data, and the frequency at which the data are collected were considered in making use attainment decisions.

For 2016, MDEQ considered all known and readily available information on the quality of the state's waters in conjunction with the rotating basin approach and MDEQ's §305(b) assessment program. However, only data that allowed for the accurate interpretation of the state's water quality standards or provided compelling evidence were used for §303(d) listing decisions.

Source: Miss. Code Ann. §§ 49-2-1, *et seq.* and 49-17-1, *et seq.*

RULE 9.4 FISH AND SHELLFISH CONSUMPTION ADVISORIES AND IMPAIRED WATERS

Non-attainment of the fish consumption use was assessed for a water body based on the presence of a fish consumption advisory supported by fish tissue monitoring data. Water bodies with fish consumption advisories, "restricted" or "no consumption," were assessed as not attaining the fish consumption use support designation.

Coastal water bodies with the Shellfish designated use that have consumption advisories are not included in the 2016 §303(d) List because these waters already have completed TMDLs for pathogens. These waters have a category 4A in the state's §305b report. These TMDLs are available for review on MDEQ's website.

Source: Miss. Code Ann. §§ 49-2-1, et seq. and 49-17-1, et seq.

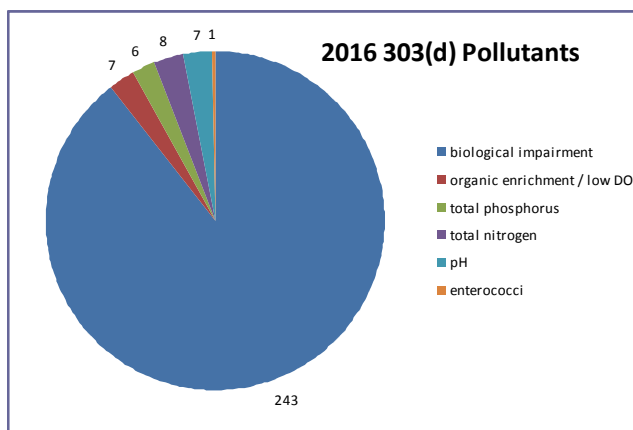
RULE 9.5 LAYOUT OF THE TABLES

A. Stream Listings

The impaired waters in Table 4 are sorted alphabetically by the river basin then by the water body name. The extent of the segment is described beginning with the upstream boundary thence to the downstream boundary. The maps of these segments are located in Appendix A.

B. Pollutants Included

The pollutants are listed specifically for each listing. There are 272 listings for 2016. Biological Impairment is listed 243 times (89.3%). This listing is generated based on assessing the result of our benthic sampling program M-BISQ. When the water body is scored below the eco-regional value, it is added to the impaired waters list. A stressor identification process is then used to identify the specific pollutants causing the microbiological impairment. Organic Enrichment, Total Nitrogen, and Total Phosphorus listings are for excessive nutrients or organics which impact the dissolved oxygen and eutrophication in the water body. The pH listings are from water monitoring results which are outside of the normal range for pH. If there are multiple pollutants and/or uses for a water body, these are shown as multiple listings for the water body.



C. Pollutant Source

Due to the nature of the monitoring and listings for 2016, the source of the impairment is generally not known. For the biological listings a stressor identification process is required to identify probable primary stressors. These are generally non-point source issues and source identification is difficult without specific analysis.

D. Changes Made For 2016

Table 5 provides the changes proposed for 2016 including all of the completed TMDLs since 2014, the monitored streams that are now fully supporting, and other changes made to the list. In addition, the EPA approval date as well as the federal NTTTS TMDL tracking number are provided. The National TMDL Tracking System (NTTS) number is provided by EPA after the TMDL is finalized and approved. This becomes the identification number for that TMDL report.

For a more detailed description of the data and assessment steps taken, please refer to the state's 305b report. This report to Congress reviews all of the data collected and reports results both attaining and non-attaining on the states waters.

Source: Miss. Code Ann. §§ 49-2-1, *et seq.* and 49-17-1, *et seq.*

RULE 9.6 WATER BODY IDENTIFICATION NUMBERS

A. Historical Numbering System

The historical water body identification number for each water body listed contained a reference to the watershed of its location. Mississippi's river basins were divided into 482 watersheds. The specific location of a water body was found by comparing the first three numbers in the water body's ID to the watershed numbers shown on the basin maps. In the 2002 and 2004 §303(d) lists, MDEQ used a numbering system based on identification of the river basin and the 11-digit USGS HUC system. This system was updated in 2006 and there are no longer any segments using this numbering approach.

B. Current Numbering System

MDEQ and USGS completed work on the new 12-digit watershed based delineation of Mississippi in 2005. MDEQ incorporated this new delineation into the identification numbering system for water body segments in the states beginning with the 2006 §305(b) report. All waters previously identified using a historic numbering system have been converted to the current numbering system to be consistent and to accurately reflect watershed hydrology.

The new delineated subwatersheds are smaller in size than the watersheds used in the 2004 list. Whereas the previous numbering system relied upon the river basins being divided into 482 watersheds, the new numbering system includes 1294 subwatersheds. Each new water body segment in the 2006 and 2008 lists were identified by a six digit numeric code. This 2016 §303(d) list will use the same numbering system. The first digit identifies which basin contains the water body. The major river basins are numbered 1 through 9 in alphabetical order (1 for the Big Black River Basin, 2 for the Coastal Streams Basin, through 9 for the Yazoo Basin.) [See map on page 4.] The next three digits in the six digit water body identification number refer to the specific subwatershed within that basin. Each major river basin has the subwatersheds it contains numbered beginning with 1 (subwatershed 146 located in the Big Black River Basin would be numbered 1146, subwatershed 74 located in the Pascagoula River Basin would be numbered 4074.) The final two digits in the six digit water body identification number refer to a specific stream segment within the specified subwatershed. For instance, Beaver Creek, water body ID 521413, is stream segment 13 in subwatershed 214 in the Pearl River Basin.

C. Basin Maps

Maps are included in Appendix A for each basin. Streams shown in blue are the impaired stream segments. In some river basins, the maps were split into 8-digit Hydrologic Unit Codes to better fit the page.

Source: Miss. Code Ann. §§ 49-2-1, *et seq.* and 49-17-1, *et seq.*

RULE 9.7 TMDLs SCHEDULED FOR THE NEXT TWO YEARS

MDEQ has developed a new collaborative framework for implementing the Clean Water Act in compliance with a new national initiative by EPA. The Priority Framework Process is designed to help coordinate efforts to advance the effectiveness of the water program. In order to select

priority watersheds MDEQ used landscape information to characterize and rank watersheds by resource value and potential stressors. This new framework does not change regulation, policy or issue new mandates. It is intended to provide focus for MDEQ's water programs so as to better manage the activities and promote collaboration to achieve water quality goals. More information on the Priority Framework Process can be found here:

http://deq.state.ms.us/MDEQ.nsf/page/TWB_MississippiPriorityFrameworkProcess?OpenDocument

This selection process was used to assign a high, medium and low priority for all water bodies on the 2016 §303(d) List . Impaired waters identified as high priority will be targeted for TMDL development for the next two years. These dates are given for information only and are not a commitment by MDEQ of TMDL completion. Table 3 below lists the TMDLs MDEQ has planned for development in 2016 and 2017 based on resource availability. These TMDLs are also dependent on completion of stressor identifications for the biological listings included.

Table 3 TMDLs Scheduled for 2016 and 2017

Basin	Water Body Name	Water Body ID	County	Pollutant
Big Black River	Big Black River	107811	Yazoo, Madison, Hinds, Warren	pH
Coastal Streams	Turkey Creek	202211, 202214	Harrison	Bacteria
Coastal Streams	Bayou Cumbest	200311	Jackson	Organic Enrichment / Low Dissolved Oxygen
Coastal Streams	Wolf Creek	205312	Harrison	Biological Impairment
Pearl River	Hontakalo Creek	504711	Scott	Biological Impairment
Tombigbee River	Buttahatchie River	806711	Monroe	pH
Tombigbee River	Chinchahoma Creek	812811	Oktibbeha	Biological Impairment
Tombigbee River	Shaw Creek	812313	Oktibbeha	Biological Impairment
Tombigbee River	Spring Creek	809312	Clay	Biological Impairment
Tombigbee River	Unnamed Tributary To Catalpa Creek	809012	Clay	Biological Impairment
Tombigbee River	Unnamed Tributary To Gilmer Creek	810412	Lowndes	Biological Impairment
Tombigbee River	Yellow Creek	813211	Winston, Noxubee	Biological Impairment
Yazoo River	Beaver Bayou	951212	Sunflower	Organic Enrichment / Low Dissolved Oxygen
Yazoo River	North Tippah Creek	902512	Tippah	Biological Impairment

Source: Miss. Code Ann. §§ 49-2-1, et seq. and 49-17-1, et seq.

RULE 9.8 PUBLIC PARTICIPATION AND APPROVAL PROCESS

MDEQ notified the public of the availability of this document by publishing a Public Notice in a statewide newspaper as well as selected regional newspapers. Additionally, MDEQ sent notices of availability to those addressees on the TMDL notification list.

The public was invited to comment on the content of this document. The Public Notice period began on February 9, 2016 and went until March 14, 2016. Comments were accepted by mail or electronic submission and in person at a Public Hearing held in MDEQ's offices on March 14, 2016. At that time, an extension to the public notice period was requested and granted. The extension to the public notice period ended on March 30, 2016. This proposed document will be submitted to the Mississippi Commission on Environmental Quality for adoption. Once adopted by the Commission, the 2016 §303(d) List will be submitted to EPA Region 4 for final approval, and then the Mississippi 2016 §303(d) List of Impaired Water Bodies will be filed with the Mississippi Secretary of State in compliance with state law.

Source: Miss. Code Ann. §§ 49-2-1, *et seq.* and 49-17-1, *et seq.*

RULE 9.9 IMPAIRED WATERS LISTING

Table 4 Impaired Waters

Basin	Water Body Name	Water Body ID	County	Impaired Use	Pollutant	TMDL Priority	Location
Big Black River	Bear Creek	107711	Warren	Aquatic Life Use Support	Biological Impairment	Low	Near Youngton From Headwaters Road To Mouth At Big Black River
Big Black River	Beaver Creek	107411	Yazoo	Aquatic Life Use Support	Biological Impairment	Low	From Headwaters To Mouth At Big Black River
Big Black River	Big Black River	100111	Webster, Choctaw	Aquatic Life Use Support	Biological Impairment	Low	Near Mathiston From Headwaters To MWS 1003 Boundary
Big Black River	Big Black River	107811	Yazoo, Madison, Hinds, Warren	Aquatic Life Use Support	pH	High	From Confluence With Bear Creek To Confluence With Clear Creek
Big Black River	Big Cypress Creek	104812	Holmes	Aquatic Life Use Support	Biological Impairment	Low	Near Franklin From Headwaters To Confluence With Unnamed Intermittent Tributary Down Stream Of Highway 17 Bridge
Big Black River	Big Sand Creek	108311	Hinds, Claiborne	Aquatic Life Use Support	Biological Impairment	Low	From Headwaters To Mouth At Big Black River
Big Black River	Fivemile Creek	108211	Hinds	Aquatic Life Use Support	Biological Impairment	Low	From Headwaters To Mouth At Big Black River
Big Black River	Fleetwood Creek	109113	Hinds	Aquatic Life Use Support	Biological Impairment	Low	From Headwaters To Confluence With Bakers Creek
Big Black River	Hamer Bayou	109312	Warren	Aquatic Life Use Support	Biological Impairment	Low	From Headwaters To Mouth At Big Black River
Big Black River	Hobuck Creek	105511	Madison	Aquatic Life Use Support	Biological Impairment	Low	From Headwaters To Confluence With Doaks Creek
Big Black River	Jims Bayou	109311	Warren	Aquatic Life Use Support	Biological Impairment	Low	Near Reganton From Headwaters To Mouth At Big Black River
Big Black River	Jordan Creek	102911	Holmes	Aquatic Life Use Support	Biological Impairment	Low	Near Hoffman From Headwaters To Mouth At Big Black River
Big Black River	Little Bear Creek	105712	Madison	Aquatic Life Use Support	Biological Impairment	Low	At Madison From Headwaters To Mouth At Bear Creek
Big Black River	Middle Bywy Creek	100911	Choctaw	Aquatic Life Use Support	Biological Impairment	Low	From Headwaters To Mouth At Big Bywy Ditch

Basin	Water Body Name	Water Body ID	County	Impaired Use	Pollutant	TMDL Priority	Location
Big Black River	Muddy Creek	107912	Warren	Aquatic Life Use Support	Biological Impairment	Low	From Headwaters To Confluence With Clear Creek
Big Black River	Pepper / Rucker Creek	104511	Yazoo	Aquatic Life Use Support	Biological Impairment	Low	Near Canton From Headwaters To Mouth At Beaver Run
Big Black River	Persimmon Creek	106311	Madison	Aquatic Life Use Support	Biological Impairment	Low	From Headwaters To Confluence With Big Black River
Big Black River	Porter Creek	107611	Hinds	Aquatic Life Use Support	Biological Impairment	Low	Near Lynchburg From Headwaters To Mouth At Big Black River
Big Black River	Rambo Creek	103912	Madison, Leake	Aquatic Life Use Support	Biological Impairment	Low	From Headwaters To Confluence With Hinds Creek
Big Black River	Sand Creek	101112	Webster	Aquatic Life Use Support	Biological Impairment	Low	From Headwaters To Mouth At Calabrella Creek
Big Black River	Turkey Creek	108711	Hinds	Aquatic Life Use Support	Biological Impairment	Low	From Headwaters To Mouth At Fourteen Mile Creek
Big Black River	Unnamed Tributary To Pigeon Roost Creek	100411	Oktibbeha	Aquatic Life Use Support	Biological Impairment	Low	From Headwaters To Mouth At Pigeon Roost Creek
Big Black River	Willis Creek	109511	Warren	Aquatic Life Use Support	Biological Impairment	Low	Near Galloway From Headwaters To Mouth At Big Black River
Coastal Streams	Bayou Casotte	200313	Jackson	Aquatic Life Use Support	Organic Enrichment / Low Dissolved Oxygen	High	At Pascagoula From The Confluence Of West Prong And East Prong To The Turning Basin
Coastal Streams	Bayou Casotte West Prong	200312	Jackson	Aquatic Life Use Support	Organic Enrichment / Low Dissolved Oxygen	Low	At Pascagoula From Louise St. To The Confluence Of West Prong And East Prong

Basin	Water Body Name	Water Body ID	County	Impaired Use	Pollutant	TMDL Priority	Location
Coastal Streams	Bayou Cumbest	200311	Jackson	Aquatic Life Use Support	Organic Enrichment / Low Dissolved Oxygen	High	Near Orange Grove: From County Road East Of Orange Grove To Mouth At Point Aux Chenes Bay
Coastal Streams	Catahoula Creek	203311	Hancock	Aquatic Life Use Support	Biological Impairment	Low	Near Santa Rosa From Headwaters To Confluence With Jourdan River
Coastal Streams	Costapia Bayou	201611	Jackson	Aquatic Life Use Support	Biological Impairment	Low	At Latimer From Headwaters To Mouth At Tchoutacabouffa River
Coastal Streams	Dead Tiger Creek	203711	Hancock	Aquatic Life Use Support	Biological Impairment	Low	Near Kiln From Headwaters To Confluence With Catahoula Creek
Coastal Streams	Flat Branch	202111	Harrison	Aquatic Life Use Support	Biological Impairment	Low	Near Gulfport From Headwaters To Mouth At Bernard Bayou
Coastal Streams	Gulf Park Estates Beach	250411	Jackson	Recreation	Enterococci	Low	Near Ocean Springs From Pelican Ave To Deer Street
Coastal Streams	Gulf Park Estates Beach	250411	Jackson	Aquatic Life Use Support	Total Nitrogen	Low	Near Ocean Springs From Pelican Ave To Deer Street
Coastal Streams	Palmer Creek	200915	Harrison	Aquatic Life Use Support	Biological Impairment	Low	Near Success From Headwaters To Mouth At Biloxi River
Coastal Streams	Railroad Creek	201411	Stone, Jackson, Harrison	Aquatic Life Use Support	Biological Impairment	Low	Near Vestry From Headwaters To Mouth At Ramsey Creek
Coastal Streams	Turkey Creek	202211	Harrison	Aquatic Life Use Support	Biological Impairment	Low	Near Long Beach From Confluence With Canal #2 To Highway 49
Coastal Streams	Unnamed Tributary To Bayou Lasalle	204013	Harrison, Hancock	Aquatic Life Use Support	Biological Impairment	Low	Near Vidalia From Headwaters To Mouth At Bayou Lasalle
Coastal Streams	Unnamed Tributary To Rotten Bayou	204012	Harrison, Hancock	Aquatic Life Use Support	Biological Impairment	Low	Near Diamondhead From Headwaters To Mouth At Rotten Bayou

Basin	Water Body Name	Water Body ID	County	Impaired Use	Pollutant	TMDL Priority	Location
Coastal Streams	West Creek	201012	Stone, Harrison	Aquatic Life Use Support	Biological Impairment	Low	Near Howison From Confluence With Mchenry Creek To Mouth At Saucier Creek
Coastal Streams	Wolf Creek	205312	Hancock, Harrison	Aquatic Life Use Support	Biological Impairment	High	Near Dedeaux From Headwaters To Mouth At Wolf River
North Independent Streams	Bearman Creek	302412	Tippah	Aquatic Life Use Support	Biological Impairment	Low	From Headwaters To N35°
North Independent Streams	Bynum Creek	300413	Alcorn	Aquatic Life Use Support	Biological Impairment	Low	Near Rienzi From Headwaters To Mouth At Hinkle Creek
North Independent Streams	Eastes Creek	301112	Alcorn	Aquatic Life Use Support	Biological Impairment	Low	Near Kossuth From Confluence With Underwood Creek To Mouth At Tuscumbia River Canal
North Independent Streams	Fourth Creek	301913	Tippah, Alcorn	Aquatic Life Use Support	Biological Impairment	Low	Near Walnut From Headwaters To Mouth At Hatchie River
North Independent Streams	Hinkle Creek	300412	Alcorn	Aquatic Life Use Support	Biological Impairment	Low	Near Rienzi From Headwaters To Mouth At Tuscumbia River Canal
North Independent Streams	Owl Creek	301412	Tippah	Aquatic Life Use Support	Biological Impairment	Low	From Headwaters To Mouth At Little Hatchie River
North Independent Streams	Tarebreeches Creek	301212	Alcorn	Aquatic Life Use Support	Biological Impairment	Low	From Headwaters To Mouth At Tuscumbia River Canal
North Independent Streams	Turkey Creek	302112	Tippah	Aquatic Life Use Support	Biological Impairment	Low	Near Falkner From Headwaters To Mouth At Muddy Creek
North Independent Streams	West Prong Muddy Creek	302011	Tippah	Aquatic Life Use Support	Biological Impairment	Low	At Falkner From Headwaters To Mouth At Muddy Creek
Pascagoula River	Anderson Branch	401711	Newton	Aquatic Life Use Support	Biological Impairment	Low	Near Decatur From Headwaters To Mouth At Okahatta Creek

Basin	Water Body Name	Water Body ID	County	Impaired Use	Pollutant	TMDL Priority	Location
Pascagoula River	Archusa Creek	405111	Clarke	Aquatic Life Use Support	Biological Impairment	Low	Near Enterprise From Headwaters At Unnamed Impoundment To MWS 4052 Boundary
Pascagoula River	Beaver Creek	421212	Perry	Aquatic Life Use Support	Biological Impairment	Low	Near Barbara From Headwaters To Mouth At Hickory Creek
Pascagoula River	Big Creek	409911	Jones	Aquatic Life Use Support	Biological Impairment	Low	Near Soso From MWS 4098 Boundary To Mouth At Leaf River
Pascagoula River	Cedar Creek	408611	Newton, Jasper	Aquatic Life Use Support	Biological Impairment	Low	From Headwaters To Mouth At Quarterliah Creek
Pascagoula River	Chunky Creek	401511	Newton	Aquatic Life Use Support	Biological Impairment	Low	Near Union From Headwaters To MWS 4018 Boundary
Pascagoula River	Chunky River	402312	Newton, Lauderdale	Aquatic Life Use Support	Biological Impairment	Low	At Chunky From Confluence With Chunky Creek And Potterchitto Creek To The MWS 4026 Boundary
Pascagoula River	Chunky River	402611	Lauderdale, Clarke	Aquatic Life Use Support	Biological Impairment	Low	Near Enterprise From Confluence With Possum Creek To Mouth At Chickasawhay River
Pascagoula River	Clear Creek	409013	Smith	Aquatic Life Use Support	Biological Impairment	Low	Near Trazler From Headwaters To Mouth At Oakahay Creek
Pascagoula River	Dry Creek	403811	Clarke, Wayne	Aquatic Life Use Support	Biological Impairment	Low	Near Matherville From Headwaters To Mouth At Buckatunna Creek
Pascagoula River	Dry Creek	411111	Covington	Aquatic Life Use Support	Biological Impairment	Low	Near Terrell From Headwaters To Mouth At Bowie Creek
Pascagoula River	Eucutta Creek	405811	Wayne, Clarke	Aquatic Life Use Support	Biological Impairment	Low	Near Shubuta From Outfall Of Small Unnamed Pond To Confluence With Chickasawhay River
Pascagoula River	Flint Creek	420211	Stone	Aquatic Life Use Support	Biological Impairment	Low	At Wiggins From Outfall Of Flint Creek Reservoir To Mouth At Red Creek
Pascagoula River	Gordon Creek	405011	Clarke	Aquatic Life Use Support	Biological Impairment	Low	Near Elwood From Headwaters To Mouth At Souenlovie Creek
Pascagoula River	Horse Branch	413612	Jasper	Aquatic Life Use Support	Biological Impairment	Low	Near Heidelberg From Headwaters To Mouth At Tallahattah Creek
Pascagoula River	Houston Creek	400312	Neshoba, Kemper	Aquatic Life Use Support	Biological Impairment	Low	At Rio From Headwaters To Mouth At Okatibbee Creek

Basin	Water Body Name	Water Body ID	County	Impaired Use	Pollutant	TMDL Priority	Location
Pascagoula River	Indian Creek	417612	George	Aquatic Life Use Support	Biological Impairment	Low	From Headwaters To Mouth At Pascagoula River
Pascagoula River	Little Cedar Creek	417411	George	Aquatic Life Use Support	Biological Impairment	Low	Near Lucedale From Headwaters To Mouth At Big Cedar Creek
Pascagoula River	Little Oakahay Creek	408912	Smith	Aquatic Life Use Support	Biological Impairment	Low	Near Burns From Headwaters To Mouth At Oakahay Creek
Pascagoula River	Long Creek	403011	Lauderdale, Clarke	Aquatic Life Use Support	Biological Impairment	Low	From Confluence With Gays Branch To MWS 4031 Boundary
Pascagoula River	Long Creek	403111	Clarke	Aquatic Life Use Support	Biological Impairment	Low	From MWS 4030 Boundary To Mouth At Buckatunna Creek
Pascagoula River	Martin Creek	407812	Greene	Aquatic Life Use Support	Biological Impairment	Low	From Headwaters To Mouth At Chickasawhay River
Pascagoula River	Okatibbee Creek	401011	Lauderdale	Aquatic Life Use Support	Biological Impairment	Low	Near Savoy From Confluence With Sowashee Creek To MWS 4011 Boundary
Pascagoula River	Okatibbee Creek	401011	Lauderdale	Aquatic Life Use Support	pH	Low	Near Savoy From Confluence With Sowashee Creek To MWS 4011 Boundary
Pascagoula River	Okatibbee Creek	401011	Lauderdale	Aquatic Life Use Support	Total Nitrogen	Low	Near Savoy From Confluence With Sowashee Creek To MWS 4011 Boundary
Pascagoula River	Okatibbee Creek	401111	Lauderdale	Aquatic Life Use Support	Biological Impairment	Low	From The MWS 4010 Boundary To The Mouth At Chickasawhay River
Pascagoula River	Okatoma Creek	410511	Covington	Aquatic Life Use Support	Total Nitrogen	Low	At Kola From Confluence With Rogers Creek To Confluence With Big Swamp Creek
Pascagoula River	Penantly Creek	404712	Jasper	Aquatic Life Use Support	Biological Impairment	Low	At Rose Hill From Headwaters To Mouth At Souenlovie Creek
Pascagoula River	Prairie Creek	413911	Jasper	Aquatic Life Use Support	Biological Impairment	Low	Near Heidelberg From Headwaters To Mouth At Bogue Homo
Pascagoula River	Rocky Creek	403311	Clarke	Aquatic Life Use Support	Biological Impairment	Low	Near Linton From Headwaters To Mouth At Buckatunna Creek
Pascagoula River	Rocky Creek	426211	George	Aquatic Life Use Support	Biological Impairment	Low	At Shipman From Headwaters To Mouth At Escatawpa River

Basin	Water Body Name	Water Body ID	County	Impaired Use	Pollutant	TMDL Priority	Location
Pascagoula River	Shelton Creek	410812	Jones, Covington	Aquatic Life Use Support	Biological Impairment	Low	At Lux From Headwaters To Mouth At Okatoma Creek
Pascagoula River	Souenlovie Creek	404811	Newton, Jasper	Aquatic Life Use Support	Biological Impairment	Low	From Confluence With Penantly Creek To Confluence With Twistwood Creek
Pascagoula River	Sowashee Creek	400811	Lauderdale	Aquatic Life Use Support	Total Nitrogen	Low	At Meridian From Headwaters To Confluence With Unnamed Trib At MWS 4237 Boundary
Pascagoula River	Sowashee Creek	400811	Lauderdale	Aquatic Life Use Support	Total Phosphorus	Low	At Meridian From Headwaters To Confluence With Unnamed Trib At MWS 4237 Boundary
Pascagoula River	Sowashee Creek	400911	Lauderdale	Aquatic Life Use Support	Total Nitrogen	Low	From Confluence With Unnamed Trib At MWS 4237 Boundary To Confluence With Okatibbee Creek
Pascagoula River	Sowashee Creek	400911	Lauderdale	Aquatic Life Use Support	Total Phosphorus	Low	From Confluence With Unnamed Trib At MWS 4237 Boundary To Confluence With Okatibbee Creek
Pascagoula River	Sowashee Creek	423711	Lauderdale	Aquatic Life Use Support	Total Nitrogen	Low	Near Meridian From MWS 4008 Boundary To MWS 4009 Boundary
Pascagoula River	Sowashee Creek	423711	Lauderdale	Aquatic Life Use Support	Total Phosphorus	Low	Near Meridian From MWS 4008 Boundary To MWS 4009 Boundary
Pascagoula River	Tallahala Creek	413711	Jones	Aquatic Life Use Support	Biological Impairment	Low	From Confluence With Tallahatta Creek To Confluence With Big Reely Creek
Pascagoula River	Tallahala Creek	413712	Jones	Aquatic Life Use Support	Biological Impairment	Low	From Confluence With Big Reely Creek To MWS 4138 Boundary
Pascagoula River	Tallahala Creek	413812	Jones	Aquatic Life Use Support	Biological Impairment	Low	From MWS 4137 Boundary To Confluence With Tallahoma Creek
Pascagoula River	Tallahala Creek	415511	Jones, Forrest, Perry	Aquatic Life Use Support	pH	Medium	At Runnelstown From Confluence With Courtney Creek To MWS 4156 Boundary Near Hammock Branch
Pascagoula River	Tallahala Creek	415511	Jones, Forrest, Perry	Aquatic Life Use Support	Total Nitrogen	Medium	At Runnelstown From Confluence With Courtney Creek To MWS 4156 Boundary Near Hammock Branch

Basin	Water Body Name	Water Body ID	County	Impaired Use	Pollutant	TMDL Priority	Location
Pascagoula River	Tallahala Creek	415511	Jones, Forrest, Perry	Aquatic Life Use Support	Total Phosphorus	Medium	At Runnelstown From Confluence With Courtney Creek To MWS 4156 Boundary Near Hammock Branch
Pascagoula River	Tallahoma Creek	412511	Jasper, Jones	Aquatic Life Use Support	Biological Impairment	Medium	Near Laurel From Confluence With Piney Branch To MWS 4127 Boundary
Pascagoula River	Tallahoma Creek	412711	Jasper, Jones	Aquatic Life Use Support	Biological Impairment	Medium	From MWS 4125 Boundary To Confluence With Terrapin Creek
Pascagoula River	Tallahoma Creek	412811	Jasper, Jones	Aquatic Life Use Support	Biological Impairment	Medium	From Confluence With Terrapin Creek To Confluence With Horse Creek
Pascagoula River	Tallahoma Creek	412911	Jasper, Jones	Aquatic Life Use Support	Biological Impairment	Medium	From Confluence With Horse Creek To Confluence With Tallahala Creek
Pascagoula River	Tallashua Creek	401412	Newton	Aquatic Life Use Support	Biological Impairment	Low	At Perdue From MWS 4012 Boundary To Confluence With Little Rock Creek
Pascagoula River	Terrible Creek	411311	Covington	Aquatic Life Use Support	Biological Impairment	Low	Near Williamsburg From Headwaters To Mouth At Bouie River
Pascagoula River	Tiger Creek	414512	Jones	Aquatic Life Use Support	Biological Impairment	Medium	Near Ovetts From Confluence With East Tiger Creek To Mouth At Bogue Homo
Pascagoula River	Twistwood Creek	423811	Jasper, Clarke	Aquatic Life Use Support	Biological Impairment	Low	Near Pachuta From Confluence Of North And South Twistwood Creek To Mouth At Souinlovie Creek
Pascagoula River	Unnamed Tributary To Oakahay Creek	409014	Smith	Aquatic Life Use Support	Biological Impairment	Low	Near Raleigh From Headwaters To Mouth At Oakahay Creek
Pascagoula River	West Bouie Creek	411212	Jefferson Davis	Aquatic Life Use Support	Biological Impairment	Low	Near Bassfield From Headwaters To Confluence With Bouie River
Pearl River	Ashlog Creek	508313	Rankin	Aquatic Life Use Support	Biological Impairment	Low	Near Pelahatchie From Headwaters To Mouth At Pelahatchie Creek
Pearl River	Bahala Creek	513911	Copiah	Aquatic Life Use Support	Biological Impairment	Medium	From Confluence With Russell Creek To Confluence With Little Bahala Creek
Pearl River	Beaver Creek	521413	Pike	Aquatic Life Use Support	Biological Impairment	Low	Near Johnstons Station From Outfall Of Dixie Springs Lake To Mouth At Bogue Chitto River

Basin	Water Body Name	Water Body ID	County	Impaired Use	Pollutant	TMDL Priority	Location
Pearl River	Big Creek	513211	Simpson	Aquatic Life Use Support	Biological Impairment	Medium	Near Harrisville From MWS 5131 Boundary To Mouth At Strong River
Pearl River	Bogue Chitto River	521111	Lincoln, Pike	Aquatic Life Use Support	Biological Impairment	Low	From Confluence With Boone Creek To Confluence With Myers Creek
Pearl River	Bogue Chitto River	521311	Lincoln, Pike	Aquatic Life Use Support	Biological Impairment	Low	From Confluence With Myers Creek To Johnson'S Station
Pearl River	Boone Creek	521113	Lincoln	Aquatic Life Use Support	Biological Impairment	Low	Near Brookhaven From Headwaters To Mouth At Bogue Chitto
Pearl River	Caney Creek	511411	Scott, Smith	Aquatic Life Use Support	Biological Impairment	Low	Near Pulaski From Headwaters To Mouth At Strong River
Pearl River	Clear Creek	508611	Rankin	Aquatic Life Use Support	Biological Impairment	Medium	Near Pelahatchie From Headwaters To Mouth At Pelahatchie Creek
Pearl River	Cobbs Creek	504111	Leake	Aquatic Life Use Support	Biological Impairment	Low	Near Carthage From Headwaters To Mouth At Lobutch Creek
Pearl River	Cole Creek	506111	Attala	Aquatic Life Use Support	Biological Impairment	Low	Near French Camp From Headwaters To MWS 5059 Boundary
Pearl River	Coon Creek	503713	Leake	Aquatic Life Use Support	Biological Impairment	Low	Near Renfroe From Headwaters To Mouth At Lobutch Creek
Pearl River	Holiday Creek	516311	Jefferson Davis, Marion	Aquatic Life Use Support	Biological Impairment	Medium	From Confluence With Unnamed Tributary At MWS 5162 Boundary To Mouth At Pearl River
Pearl River	Hollybush Creek	508612	Rankin	Aquatic Life Use Support	Biological Impairment	Medium	Near Pelahatchie From Headwaters To Mouth At Clear Creek
Pearl River	Hontokalo Creek	504711	Scott	Aquatic Life Use Support	Biological Impairment	High	Near Steel From Headwaters To Mouth At Little Canal
Pearl River	Land Creek	500911	Kemper	Aquatic Life Use Support	Biological Impairment	Low	Near Bogue Chitto From Headwaters To Mouth At Bogue Chitto River
Pearl River	Limestone Creek	511011	Simpson	Aquatic Life Use Support	Biological Impairment	Medium	From Headwaters To Mouth At Pearl River
Pearl River	Line Creek	508312	Scott, Rankin	Aquatic Life Use Support	Biological Impairment	Low	From Headwaters To Mouth At Pelahatchie Creek
Pearl River	Little Bahala Creek	514011	Lincoln, Lawrence	Aquatic Life Use Support	Biological Impairment	Medium	Near Wesson From Headwaters To Mouth At Bahala Creek
Pearl River	Little Copiah Creek	513312	Copiah	Aquatic Life Use Support	Biological Impairment	Medium	From Headwaters To Mouth At Copiah Creek

Basin	Water Body Name	Water Body ID	County	Impaired Use	Pollutant	TMDL Priority	Location
Pearl River	Lynch Creek	509311	Hinds	Aquatic Life Use Support	Biological Impairment	Low	At Jackson From Headwaters To The Pearl River
Pearl River	Owl Creek	501111	Kemper	Aquatic Life Use Support	Biological Impairment	Low	Near Preston From Headwaters To The Bogue Chitto River
Pearl River	Pickens Creek	504112	Leake	Aquatic Life Use Support	Biological Impairment	Low	Near Redwater From Headwaters To Mouth At Cobbs Creek
Pearl River	Purvis Creek	511711	Rankin, Smith	Aquatic Life Use Support	Biological Impairment	Low	Near Polkville From Headwaters To Mouth At Strong River
Pearl River	Rials Creek	512712	Simpson	Aquatic Life Use Support	Biological Impairment	Low	From Headwaters To Confluence With Simmons Branch
Pearl River	Shiola Creek	507111	Leake	Aquatic Life Use Support	Biological Impairment	Low	At St Ann From Headwaters To MWS 5070 Boundary At St Ann Road
Pearl River	Steel Creek	513511	Copiah	Aquatic Life Use Support	Biological Impairment	Medium	Near Rockport From Headwaters To Mouth At The Pearl River
Pearl River	Sugar Bogue	507612	Scott	Aquatic Life Use Support	Biological Impairment	Low	Near Forkville From Headwaters To Mouth At Coffee Bogue
Pearl River	Tibby Creek	505811	Choctaw, Attala	Aquatic Life Use Support	Biological Impairment	Low	Near Mccool From Confluence With Robinson Branch To 5056 MWS Boundary
Pearl River	Topisaw Creek	522211	Lincoln, Pike	Aquatic Life Use Support	Biological Impairment	Low	Near Ruth From 5219 MWS Boundary To Confluence At Bogue Chitto
Pearl River	Town Creek	503211	Leake	Aquatic Life Use Support	Biological Impairment	Low	At Carthage From Headwaters To The Pearl River
Pearl River	Turtle Skin Creek	520511	Hancock	Aquatic Life Use Support	Biological Impairment	Low	Near Santa Rosa From Headwaters To Confluence With Mikes River
Pearl River	Unnamed Tributary To Clear Creek	521513	Pike	Aquatic Life Use Support	Biological Impairment	Low	Near Summit From Headwaters To Mouth At Clear Creek
Pearl River	Unnamed Tributary To Tallahaga Creek	500712	Winston	Aquatic Life Use Support	Biological Impairment	Low	From Headwaters To Mouth At Tallahaga Creek
Pearl River	Upper Little Creek	517011	Lamar, Marion	Aquatic Life Use Support	Biological Impairment	Low	From Confluence With Graves Creek To Mouth At Pearl River

Basin	Water Body Name	Water Body ID	County	Impaired Use	Pollutant	TMDL Priority	Location
South Independent Streams	Bayou Sara	610911	Wilkinson	Aquatic Life Use Support	Biological Impairment	Low	From Headwaters To Confluence With Dunbar Creek
South Independent Streams	Bear Creek	610514	Wilkinson	Aquatic Life Use Support	Biological Impairment	Low	From Headwaters To Mouth At Buffalo River
South Independent Streams	Bolls Creek	604611	Jefferson	Aquatic Life Use Support	Biological Impairment	Low	From Headwaters To Confluence With North Fork Coles Creek
South Independent Streams	Browns Creek	609612	Wilkinson	Aquatic Life Use Support	Biological Impairment	Low	Near Woodville From Headwaters To Mouth At Buffalo River
South Independent Streams	Cars Creek	612112	Amite	Aquatic Life Use Support	Biological Impairment	Low	Near Liberty From Headwaters To Mouth At East Fork Amite River
South Independent Streams	Clarks Creek	604011	Claiborne	Aquatic Life Use Support	Biological Impairment	Low	From Confluence With Buckins Creek At MWS 6039 Boundary To Mouth At Barland Creek
South Independent Streams	Days Creek	612312	Amite	Aquatic Life Use Support	Biological Impairment	Low	Near Busy Corner From Headwaters To Mouth At West Fork Amite Creek
South Independent Streams	Dry Bayou	608611	Franklin	Aquatic Life Use Support	Biological Impairment	Low	Near White Apple From Headwaters To Mouth At Caney Branch
South Independent Streams	Dry Creek	608111	Franklin	Aquatic Life Use Support	Biological Impairment	Low	From Headwaters To Mouth At Homochitto River
South Independent Streams	Dry Creek	608211	Franklin	Aquatic Life Use Support	Biological Impairment	Low	At Garden City From Headwaters To Mouth At Homochitto River
South Independent Streams	Folkes Creek	605011	Jefferson	Aquatic Life Use Support	Biological Impairment	Low	From Confluence Of Stampley Creek And Compton Creek To Mouth At South Fork Coles Creek

Basin	Water Body Name	Water Body ID	County	Impaired Use	Pollutant	TMDL Priority	Location
South Independent Streams	Garret Creek	603811	Jefferson	Aquatic Life Use Support	Biological Impairment	Low	Near Union Church From Headwaters To Mouth At Foster Creek
South Independent Streams	Hatcher Bayou	690411	Warren	Aquatic Life Use Support	Biological Impairment	Low	At Vicksburg From MWS 6902 Boundary At Fisher Ferry Road To Mouth At Hennesseys Bayou
South Independent Streams	Homochitto River	607812	Amite, Franklin, Wilkinson	Aquatic Life Use Support	pH	Low	From The MWS 6074 Boundary To The Confluence With Dry Creek
South Independent Streams	Hughes Creek	603911	Claiborne, Jefferson	Aquatic Life Use Support	Biological Impairment	Low	At Violet From Headwaters To Mouth At Clarks Creek
South Independent Streams	Mud Island Creek	604811	Jefferson	Aquatic Life Use Support	Biological Impairment	Low	From Confluence With Fairchilds Creek To Confluence With North Fork Coles Creek
South Independent Streams	Muddy Bayou	600212	Claiborne, Jefferson	Aquatic Life Use Support	Biological Impairment	Low	Near Alcorn From Impoundment In Headwaters To Mouth At Dowd Creek
South Independent Streams	North Dry Creek	606112	Franklin	Aquatic Life Use Support	Biological Impairment	Low	Near Bude From Headwaters To Mouth At Homochitto River
South Independent Streams	North Fork Coles Creek	604411	Jefferson	Aquatic Life Use Support	Biological Impairment	Low	From Headwaters To MWS 6045 Boundary
South Independent Streams	North Fork Coles Creek	604511	Jefferson	Aquatic Life Use Support	Biological Impairment	Low	From MWS Boundary 6044 To MWS 6047 Boundary
South Independent Streams	North Fork Coles Creek	604711	Jefferson	Aquatic Life Use Support	Biological Impairment	Low	From MWS Boundary 6045 To Mouth At Coles Creek
South Independent Streams	Paces Bayou	690311	Warren	Aquatic Life Use Support	Biological Impairment	Low	From Confluence With Redbone Creek To Mouth At Hennessey'S Bayou

Basin	Water Body Name	Water Body ID	County	Impaired Use	Pollutant	TMDL Priority	Location
South Independent Streams	Pickneyville Creek	611211	Wilkinson	Aquatic Life Use Support	Biological Impairment	Low	Near Pickneyville From Headwaters To Mouth At Little Bayou Sara
South Independent Streams	Saint Catherine Creek	600511	Adams	Aquatic Life Use Support	Biological Impairment	Low	At Natchez From Headwaters To Confluence With Melvin Bayou
South Independent Streams	Saint Catherine Creek	600611	Adams	Aquatic Life Use Support	Biological Impairment	Low	At Natchez From Confluence With Melvin Bayou To Mouth At Mississippi River
South Independent Streams	Sandy Creek	608811	Adams	Aquatic Life Use Support	Biological Impairment	Low	From Confluence Of Swafford Creek To Mouth At Homochitto Creek
South Independent Streams	Stafford Creek	613212	Wilkinson	Aquatic Life Use Support	Biological Impairment	Low	From Headwaters To Mouth At Comite Creek
South Independent Streams	Storm Creek	602811	Claiborne	Aquatic Life Use Support	Biological Impairment	Low	Near Carlisle From Headwaters To Mouth At Bayou Pierre
South Independent Streams	Willis Creek	603411	Jefferson, Claiborne	Aquatic Life Use Support	Biological Impairment	Low	At Tillman From Headwaters To MWS 6035 Boundary Near Tillman Road Bridge
Tennessee River	Bear Creek	701111	Tishomingo	Aquatic Life Use Support	pH	Low	Near Burnstown From Unnamed Tributary North Of County Road 86 To Alabama
Tennessee River	Little Cripple Deer Creek	701412	Tishomingo	Aquatic Life Use Support	Biological Impairment	Low	Near Tishomingo From Headwaters To Mouth At Cripple Deer Creek
Tombigbee River	Alamuchee Creek	818311	Lauderdale	Aquatic Life Use Support	Biological Impairment	Low	From Headwaters To Confluence With Little Alamuchee Creek
Tombigbee River	Alamuchee Creek	818411	Lauderdale	Aquatic Life Use Support	Biological Impairment	Low	From Little Alamuchee Creek To Ms/Al State Line
Tombigbee River	Ash Creek	816012	Noxubee	Aquatic Life Use Support	Biological Impairment	Low	From Headwaters To Mouth At Noxubee River
Tombigbee River	Bogufala Creek	819211	Lee, Itawamba	Aquatic Life Use Support	Biological Impairment	Low	Near Mooreville From Headwaters To Confluence With Greenwood Creek

Basin	Water Body Name	Water Body ID	County	Impaired Use	Pollutant	TMDL Priority	Location
Tombigbee River	Boguegaba Creek	802711	Lee, Itawamba, Monroe	Aquatic Life Use Support	Biological Impairment	Low	At Richmond From Headwaters To Mouth At Boguefala Creek
Tombigbee River	Browning Creek	812913	Oktibbeha, Noxubee	Aquatic Life Use Support	Biological Impairment	Low	From Headwaters To Mouth At Noxubee River
Tombigbee River	Buttahatche River	806711	Monroe	Aquatic Life Use Support	pH	High	Near Greenwood Springs From Confluence With Sipsey Creek To The MWS 8068 Boundary
Tombigbee River	Cane Creek	807411	Chickasaw, Clay	Aquatic Life Use Support	Biological Impairment	Low	From Headwaters To Mouth At Houlka Creek
Tombigbee River	Chico Creek	820912	Chickasaw	Aquatic Life Use Support	Biological Impairment	Low	Near Houston From Headwaters To Mouth At Houlka Creek
Tombigbee River	Chinchahoma Creek	812811	Oktibbeha	Aquatic Life Use Support	Biological Impairment	High	From Headwaters To Mouth At Noxubee River
Tombigbee River	Coonewah Creek	805311	Lee	Aquatic Life Use Support	Biological Impairment	Low	From Confluence With Little Coonewah Creek To Mouth At Town Creek
Tombigbee River	Cooper Creek	809913	Lowndes	Aquatic Life Use Support	Biological Impairment	Low	Near Steen From Confluence Of Mayhew Creek To Confluence With Yellow Creek
Tombigbee River	Fuller Creek	804112	Monroe, Clay	Aquatic Life Use Support	Biological Impairment	Low	Near West Point From Headwaters To Mouth At Town Creek
Tombigbee River	Goodfood Creek	807012	Chickasaw, Pontotoc	Aquatic Life Use Support	Biological Impairment	Low	From Headwaters To Mouth At Chuquatonchee Creek
Tombigbee River	Hollis Creek	812211	Oktibbeha	Aquatic Life Use Support	Total Nitrogen	High	Near Starkville From Headwaters To The Mouth At Noxubee River
Tombigbee River	Hollis Creek	812211	Oktibbeha	Aquatic Life Use Support	Total Phosphorus	High	Near Starkville From Headwaters To The Mouth At Noxubee River
Tombigbee River	Leeper Creek	805112	Lee	Aquatic Life Use Support	Biological Impairment	Low	Near Plantersville From Headwaters To Mouth At Town Creek
Tombigbee River	Little Brown Creek	800611	Prentiss	Aquatic Life Use Support	Biological Impairment	Low	Near Marietta From Headwaters To MWS 8007 Boundary
Tombigbee River	Little Brown Creek	800712	Prentiss	Aquatic Life Use Support	Biological Impairment	Low	From MWS 8006 Boundary To Confluence With Big Brown Creek

Basin	Water Body Name	Water Body ID	County	Impaired Use	Pollutant	TMDL Priority	Location
Tombigbee River	Loakfoma Lake	812911	Noxubee	Aquatic Life Use Support	Organic Enrichment / Low Dissolved Oxygen	Low	Near Oktoc Near Dam
Tombigbee River	Loakfoma Lake	812911	Noxubee	Aquatic Life Use Support	pH	Low	Near Oktoc Near Dam
Tombigbee River	Long Branch	808312	Clay	Aquatic Life Use Support	Biological Impairment	Low	Near Mhoons Valley From Headwaters To Mouth At Line Creek
Tombigbee River	Long Branch	808512	Oktibbeha	Aquatic Life Use Support	Biological Impairment	Low	Near Starkville From Headwaters To Trim Cane Creek
Tombigbee River	Long Creek	807612	Chickasaw, Clay	Aquatic Life Use Support	Biological Impairment	Low	From Headwaters To Mouth At Houlika Creek
Tombigbee River	Luxapallila Creek	821611	Lowndes	Aquatic Life Use Support	pH	Low	At Steens: From Alabama State Line To Confluence With Yellow Creek
Tombigbee River	Mantachie Creek	801611	Lee, Itawamba	Aquatic Life Use Support	Biological Impairment	Low	At Mantachie From Headwaters To Hwy 371
Tombigbee River	Moore Creek	819611	Lowndes	Aquatic Life Use Support	Biological Impairment	Low	At Columbus From Headwaters To The Tombigbee River
Tombigbee River	Oak Slush Creek	819612	Lowndes	Aquatic Life Use Support	Biological Impairment	Low	Near Columbus From Headwaters To The Tenn-Tom Waterway
Tombigbee River	Okeelala Creek	801011	Prentiss, Lee	Aquatic Life Use Support	Biological Impairment	Low	From Headwaters To Mouth At Twentymile Creek
Tombigbee River	Osborne Creek	800912	Prentiss	Aquatic Life Use Support	Biological Impairment	Low	From Headwaters To Mouth At Twentymile Creek
Tombigbee River	Puncheon Creek	801613	Lee, Itawamba	Aquatic Life Use Support	Biological Impairment	Low	Near Mantachie From Headwaters To Mouth At Mantachie Creek
Tombigbee River	Ray Branch	801912	Itawamba	Aquatic Life Use Support	Biological Impairment	Low	Near County Road 23 From Headwaters To Mouth At Gum Creek
Tombigbee River	Rock Creek	800211	Tishomingo, Prentiss	Aquatic Life Use Support	Biological Impairment	Low	Near Belmont From Headwaters To The Tenn-Tom Waterway
Tombigbee River	Sand Creek	801612	Lee, Itawamba	Aquatic Life Use Support	Biological Impairment	Low	Near Mantachie From Headwaters To Mouth At Mantachie Creek
Tombigbee River	Sand Creek	804811	Lee	Aquatic Life Use Support	Biological Impairment	Low	From Headwaters To Mouth At Mud Creek

Basin	Water Body Name	Water Body ID	County	Impaired Use	Pollutant	TMDL Priority	Location
Tombigbee River	Sand Creek	821212	Clay	Aquatic Life Use Support	Biological Impairment	Low	From Headwaters To Confluence With Old Field Creek
Tombigbee River	Shaw Creek	812313	Oktibbeha	Aquatic Life Use Support	Biological Impairment	High	From Headwaters To Mouth At Noxubee River
Tombigbee River	Shotbag Creek	813012	Lowndes, Noxubee	Aquatic Life Use Support	Biological Impairment	Low	From Headwaters To Mouth At Noxubee River
Tombigbee River	Spring Creek	804213	Monroe	Aquatic Life Use Support	Biological Impairment	Low	Near Vinton From Headwaters To Confluence With Hang Kettle Creek
Tombigbee River	Spring Creek	809312	Clay	Aquatic Life Use Support	Biological Impairment	High	Near Westpoint From Headwaters To Ten-Tom Waterway
Tombigbee River	Standing Reed Creek	808011	Chickasaw, Clay	Aquatic Life Use Support	Biological Impairment	Low	From Headwaters To Mouth At Little Cane Creek
Tombigbee River	Town Creek	804111	Monroe	Aquatic Life Use Support	Biological Impairment	Low	From Headwaters To Confluence With Fuller Creek
Tombigbee River	Town Creek	804211	Monroe	Aquatic Life Use Support	Biological Impairment	Low	From Confluence With Fuller Creek To Mouth At Tenn-Tom Waterway
Tombigbee River	Town Creek	808912	Clay	Aquatic Life Use Support	Biological Impairment	Low	At West Point From Headwaters To Tibbee Creek
Tombigbee River	Town Creek	820211	Monroe	Aquatic Life Use Support	pH	Low	Near Nettleton: From Confluence With Roberts Branch At MWS 8201 Boundary To Confluence With Shoal Creek
Tombigbee River	Tulip Creek	804912	Lee	Aquatic Life Use Support	Biological Impairment	Low	At Tupelo From Headwaters To Mouth At Town Creek
Tombigbee River	Unnamed Tributary To Catalpa Creek	809012	Clay	Aquatic Life Use Support	Biological Impairment	High	Near Stephens From Headwaters To Mouth At Catalpa Creek
Tombigbee River	Unnamed Tributary To Gilmer Creek	810412	Lowndes	Aquatic Life Use Support	Biological Impairment	High	Near Artesia From Headwaters To Mouth At Gilmer Creek
Tombigbee River	Wet Water Creek	813812	Noxubee	Aquatic Life Use Support	Biological Impairment	Low	Near Brooksville From Headwaters To Noxubee River

Basin	Water Body Name	Water Body ID	County	Impaired Use	Pollutant	TMDL Priority	Location
Tombigbee River	Wolf Creek	803412	Monroe	Aquatic Life Use Support	Biological Impairment	Low	From Headwaters To Mouth At Mattubby Creek
Tombigbee River	Wolf Creek	818811	Prentiss	Aquatic Life Use Support	Biological Impairment	Low	From Headwaters To Mouth At Twentymile Creek
Tombigbee River	Yellow Creek	813211	Winston, Noxubee	Aquatic Life Use Support	Biological Impairment	High	Near Betheden From Headwaters To The Noxubee River
Tombigbee River	Yonaba Creek	804511	Lee	Aquatic Life Use Support	Biological Impairment	Low	At Tupelo From Confluence Of Bridge Creek To Confluence Of Town Creek
Yazoo River	Abiaca Creek	920011	Carroll	Aquatic Life Use Support	Biological Impairment	Low	At Seven Pines From Confluence With Coila Creek To MWS Boundary 9411
Yazoo River	Bear Creek	913812	Chickasaw, Calhoun	Aquatic Life Use Support	Biological Impairment	Low	From The Headwaters To Mouth At Topashaw Creek Canal
Yazoo River	Beartail Creek	909712	Tate	Aquatic Life Use Support	Biological Impairment	Low	From Confluence With Unnamed Tributary Near MWS Boundary 9096 To Mouth At Coldwater River
Yazoo River	Beaver Bayou	935912	Sunflower	Aquatic Life Use Support	Organic Enrichment / Low Dissolved Oxygen	High	From Headwaters To MWS 9360 Boundary
Yazoo River	Beaver Bayou	936012	Sunflower	Aquatic Life Use Support	Organic Enrichment / Low Dissolved Oxygen	High	From MWS 9359 Boundary To Mouth At Mound Bayou
Yazoo River	Big Bogue	917311	Montgomery, Grenada	Aquatic Life Use Support	Biological Impairment	Low	Near Duck Hill From Headwaters To Confluence With Wilkins Creek
Yazoo River	Black Creek	921713	Holmes	Aquatic Life Use Support	Biological Impairment	Low	From Confluence With Tarrey Creek Near MWS 9215 Boundary To Confluence With Harland Creek
Yazoo River	Bliss Creek	923411	Warren	Aquatic Life Use Support	Biological Impairment	Low	Near Redwood From Headwaters To The Yazoo River
Yazoo River	Butputter Creek	914511	Grenada	Aquatic Life Use Support	Biological Impairment	Low	Near Grenada From Headwaters To The Grenada Lake Flood Pool

Basin	Water Body Name	Water Body ID	County	Impaired Use	Pollutant	TMDL Priority	Location
Yazoo River	Bynum Creek	907711	Panola	Aquatic Life Use Support	Biological Impairment	Low	Near Water Valley From Headwaters To Enid Lake Flood Pool
Yazoo River	Cherry Creek	901212	Pontotoc	Aquatic Life Use Support	Biological Impairment	Low	From Headwaters To Mouth At Lappatubby Creek
Yazoo River	Cowpen Creek	915312	Calhoun	Aquatic Life Use Support	Biological Impairment	Low	Near Banner From Headwaters To The Skuna River
Yazoo River	Cypress Creek	902111	Lafayette	Aquatic Life Use Support	Biological Impairment	Low	Near Etta From MWS Boundary 9020 To MWS 9019 Boundary
Yazoo River	Eagle Lake	948812	Warren	Aquatic Life Use Support	Organic Enrichment / Low Dissolved Oxygen	Low	Entire Lake Near Eagle Bend
Yazoo River	Eagle Lake	948812	Warren	Aquatic Life Use Support	Total Phosphorus	Low	Entire Lake Near Eagle Bend
Yazoo River	Fannegusha Creek	920911	Holmes	Aquatic Life Use Support	Biological Impairment	Low	Near Ituma From Carroll/ Holmes County Line To MWS 9211 Boundary
Yazoo River	Fourmile Branch	907211	Lafayette	Aquatic Life Use Support	Biological Impairment	Low	Near Oxford From Headwaters To Mouth At Yellow Leaf Creek
Yazoo River	Hubbard Creek	933711	Tallahatchie	Aquatic Life Use Support	Biological Impairment	Low	Near Tandy From Headwaters To Southlake Bayou
Yazoo River	Hudson Creek	904612	Lafayette	Aquatic Life Use Support	Biological Impairment	Low	Near Sardis From Headwaters To Mouth At Clear Creek
Yazoo River	James Wolf Creek	910512	Tate	Aquatic Life Use Support	Biological Impairment	Low	From MWS 9016 Boundary To Mouth At Hickahala Creek
Yazoo River	James Wolf Creek	910611	Tate	Aquatic Life Use Support	Biological Impairment	Low	From Headwaters To MWS 9105 Boundary At Hwy 4
Yazoo River	Jasper Creek	900511	Union	Aquatic Life Use Support	Biological Impairment	Low	Near New Albany From Headwaters To Mouth At Little Tallahatchie River
Yazoo River	Lake Beulah	990411	Bolivar	Aquatic Life Use Support	Organic Enrichment / Low Dissolved Oxygen	Low	Oxbow Lake Off Mississippi River

Basin	Water Body Name	Water Body ID	County	Impaired Use	Pollutant	TMDL Priority	Location
Yazoo River	Lake Henry	938312	Leflore	Aquatic Life Use Support	Chlorides	Low	Just South Of Belzoni Off Hwy 49W
Yazoo River	Lake Henry	938312	Leflore	Aquatic Life Use Support	Organic Enrichment / Low Dissolved Oxygen	Low	Just South Of Belzoni Off Hwy 49W
Yazoo River	Little Bogue	916911	Montgomery, Grenada	Aquatic Life Use Support	Biological Impairment	Low	From Headwaters To Confluence With Caffee Branch
Yazoo River	Little Bogue	917011	Montgomery, Grenada	Aquatic Life Use Support	Biological Impairment	Low	From Confluence With Caffee Branch To Confluence With Powell Creek
Yazoo River	Little Bogue	917111	Montgomery, Grenada	Aquatic Life Use Support	Biological Impairment	Low	From Confluence With Powell Creek To Confluence With Batapan Bogue
Yazoo River	Little Coldwater Creek	909112	Marshall	Aquatic Life Use Support	Biological Impairment	Low	From Headwaters To Confluence With Coldwater River
Yazoo River	Little Tallahatchie River	901711	Union, Lafayette	Aquatic Life Use Support	pH	Low	Near Etta From Confluence With Mud Creek To MWS Boundary 9019 Near The Highway 30 Bridge
Yazoo River	Little Tallahatchie River	901711	Union, Marshall	Aquatic Life Use Support	Biological Impairment	Low	From Confluence With Mud Creek To MWS 9019 Boundary
Yazoo River	Little Tallahatchie River	901911	Union, Marshall	Aquatic Life Use Support	Biological Impairment	Low	From MWS 9017 Boundary To Confluence With Fice Creek
Yazoo River	Little Topasaw Creek	913712	Webster, Chickasaw	Aquatic Life Use Support	Biological Impairment	Low	Near Woodland From Headwaters To Topasaw Creek
Yazoo River	Lockes Creek	901811	Union	Aquatic Life Use Support	Biological Impairment	Low	Near Enterprise From Headwaters To Little Tallahatchie River
Yazoo River	Lyon Creek	901111	Pontotoc	Aquatic Life Use Support	Biological Impairment	Low	Near Pontotoc From Headwaters To Confluence With Lappatubby Creek
Yazoo River	Meridian Creek	913312	Calhoun	Aquatic Life Use Support	Biological Impairment	Low	Near Vardaman From Headwaters To Mouth At Yalobusha River

Basin	Water Body Name	Water Body ID	County	Impaired Use	Pollutant	TMDL Priority	Location
Yazoo River	Moore Bayou	931912	Coahoma	Aquatic Life Use Support	Biological Impairment	Low	At Jonestown From Headwaters To Confluence Mouth At Cassidy Bayou
Yazoo River	North Tippah Creek	902512	Tippah	Aquatic Life Use Support	Biological Impairment	High	Near Ripley From Headwaters To Mouth At Tippah River
Yazoo River	Okachickima Creek	916211	Yalobusha	Aquatic Life Use Support	Biological Impairment	Low	Near Hardy From Headwaters To Mouth At Turkey Creek
Yazoo River	Okannatie Creek	900911	Union	Aquatic Life Use Support	Biological Impairment	Low	At Ecru From Confluence Of Poplar Springs Creek To MWS 9010 Boundary At Highway 15 Bridge
Yazoo River	Pecan Bayou	938511	Sunflower, Leflore	Aquatic Life Use Support	Organic Enrichment / Low Dissolved Oxygen	Low	Near Doddsville From Headwaters To Mouth At Quiver River
Yazoo River	Perry Creek	922912	Yazoo	Aquatic Life Use Support	Biological Impairment	Low	Near Oil City From Headwaters To Mouth At O'Neal Creek
Yazoo River	Piney Creek	922411	Yazoo	Aquatic Life Use Support	Biological Impairment	Low	Near Yazoo City From 9223 MWS To Confluence With Yazoo River
Yazoo River	Red Banks Creek	910212	Desoto	Aquatic Life Use Support	Biological Impairment	Low	From MWS 9101 Boundary To Mouth At Pigeon Roost Creek
Yazoo River	Shelton Creek	908411	Tallahatchie, Panola	Aquatic Life Use Support	Biological Impairment	Low	Near Crowder From Headwaters To The Yocona River
Yazoo River	Short Fork Creek	909413	De Soto	Aquatic Life Use Support	Biological Impairment	Low	Near Alphaba From Headwaters To The Mouth At Coldwater River
Yazoo River	Shutispear Creek	914011	Calhoun, Webster	Aquatic Life Use Support	Biological Impairment	Low	From The Headwaters To The MWS9139 Boundary At The Yalobusha River Flood Plain
Yazoo River	Skuna River	915311	Calhoun	Aquatic Life Use Support	Biological Impairment	Low	From Confluence With Old River Run To Confluence Thompsons Creek
Yazoo River	Skuna River Canal	914811	Pontotoc, Chickasaw, Calhoun	Aquatic Life Use Support	Biological Impairment	Low	From Headwaters To Confluence With Brush Creek

Basin	Water Body Name	Water Body ID	County	Impaired Use	Pollutant	TMDL Priority	Location
Yazoo River	Skuna River Canal	914911	Pontotoc, Chickasaw, Calhoun	Aquatic Life Use Support	Biological Impairment	Low	From Confluence With Brush Creek To MWS 9150 Boundary
Yazoo River	Skuna River Canal	915011	Pontotoc, Chickasaw, Calhoun	Aquatic Life Use Support	Biological Impairment	Low	From MWS 9149 Boundary To MWS 9152 Boundary
Yazoo River	Skuna River Canal	915212	Pontotoc, Chickasaw, Calhoun	Aquatic Life Use Support	Biological Impairment	Low	From MWS 9150 Boundary To Confluence With Kittyhutta Creek
Yazoo River	Spring Branch	941411	Holmes	Aquatic Life Use Support	Biological Impairment	Low	From Headwaters To Mouth At Millstone Bayou
Yazoo River	Unnamed Tributary To Little Tallahatchie River	901713	Union	Aquatic Life Use Support	Biological Impairment	Low	Near Pinedale From Headwaters To The Confluence With Unnamed Tributary Just Downstream Of County Road 46
Yazoo River	Whites Creek	930111	De Soto, Tunica	Aquatic Life Use Support	Biological Impairment	Low	Near Prichard From Headwaters To The Lake Comorant Bayou

Source: Miss. Code Ann. §§ 49-2-1, et seq. and 49-17-1, et seq.

RULE 9.10 CHANGES MADE SINCE THE 2014 LIST

Table 5 Changes Made Since the 2014 List

Basin	Water Body Name	Water Body ID	County	Use Classification	Pollutant	Location	2016 List
Big Black River	Middle Bywy Creek	100911	Choctaw	Fish & Wildlife	Biological Impairment	From The Headwaters To The Mouth At Big Bywy Ditch	Category 5
Coastal Streams	Tiger Creek	200912	Harrison	Fish & Wildlife	Biological Impairment	Near Success From Headwaters To Mouth At Biloxi River	Moved to category 2
Coastal Streams	Flat Branch	200914	Harrison	Fish & Wildlife	Biological Impairment	Near Hovey From Headwaters To Mouth At Saucier Creek	Moved to category 2
North Independent Streams	Grays Creek	303511	Benton	Fish & Wildlife	Biological Impairment	At Michigan City From Headwaters To Tn State Line	Category 5
North Independent Streams	Bearman Creek	302412	Tippah	Fish & Wildlife	Biological Impairment	From The Headwaters To N35°	Category 5
Pascagoula River	Patton Creek	406211	Wayne	Fish & Wildlife	Biological Impairment	Near Waynesboro From Waynesboro Lake To Mouth At Chickasawhay River	Moved to category 2
Pascagoula River	Leonards Mill Creek	410312	Covington	Fish & Wildlife	Biological Impairment	From Headwaters To Mouth At Okatoma Creek	Moved to category 2
Pascagoula River	Cedar Creek	408611	Newton, Jasper	Fish & Wildlife	Biological Impairment	From Headwaters To Mouth At Quarterliah Creek	Category 5
Pascagoula River	Dry Creek	411111	Covington	Fish & Wildlife	Biological Impairment	Near Terrell From Headwaters To Mouth At Bowie Creek	Category 5
Pascagoula River	Tallahala Creek	413711	Jones	Fish & Wildlife	Biological Impairment	From Confluence Of Talahata Creek To Confluence of Big Reely Creek	Replaced MS087T
Pascagoula River	Tallahala Creek	413712	Jones	Fish & Wildlife	Biological Impairment	From Confluence With Big Reely Creek To Mws 4138 Boundary	Replaced MS087T
Pascagoula River	Tallahala Creek	413812	Jones	Fish & Wildlife	Biological Impairment	From Mws 4137 Boundary To Confluence With Tallahoma Creek	Replaced MS087T
Pearl River	Steen Creek	510311	Rankin	Fish & Wildlife	Biological Impairment	At Florence Steen Creek From Mws 5102 Boundary To Mouth At Pearl River	Moved to category 2

Basin	Water Body Name	Water Body ID	County	Use Classification	Pollutant	Location	2016 List
Pearl River	Russell Creek	513812	Copiah	Fish & Wildlife	Biological Impairment	Near Beauregard From Headwaters To Mouth At Bahala Creek	Moved to category 2
Pearl River	Strong River	511911	Scott	Fish & Wildlife	pH	Near D'Lo To Mws 5124 Boundary At Confluence With Robinson Creek	moved to category 4A TMDL complete 5/15/2014 #65245
Pearl River	Bogue Chitto River	521111	Lincoln	Fish & Wildlife	Biological Impairment	Bogue Chitto From Confluence With Boone Creek To Confluence With Myers Creek	Replaced MSBGCHTRM1
Pearl River	Bogue Chitto River	521311	Lincoln, Pike	Fish & Wildlife	Biological Impairment	Bogue Chitto Creek From Confluence With Myers Creek To Johnson'S Station	Replace MSBGCHTRM2
South Independent Streams	Dowd Creek	600211	Jefferson	Fish & Wildlife	Biological Impairment	Near Alcorn From Headwaters To Mouth At Rodney Lake	Moved to category 2
South Independent Streams	Zeigler Creek	607811	Franklin	Fish & Wildlife	Biological Impairment	Near Rosetta From Headwaters To Mouth At Homochitto River	Moved to category 2
South Independent Streams	Little Beaver Creek	612912	Amite	Fish & Wildlife	Biological Impairment	Near Gloster From Headwaters To Mouth At Beaver Creek	Moved to category 2
South Independent Streams	Comite Creek	613211	Wilkinson, Amite	Fish & Wildlife	Biological Impairment	Near Centreville From Headwaters To Mouth At Ms/La State Line	Moved to category 2
South Independent Streams	Terrys Creek	614211	Pike	Fish & Wildlife	Biological Impairment	At Terry Creek From Headwaters To Ms/La State Line	Moved to category 2
South Independent Streams	St Catherine Creek	600511	Adams	Fish & Wildlife	Biological Impairment	At Natchez From Headwaters To Confluence Of Melvin Bayou	Category 5
South Independent Streams	Homochitto River	607812	Amite, Franklin, Wilkinson	Fish & Wildlife	pH	From The Mws 6074 Boundary To The Confluence With Dry Creek	Category 5

Basin	Water Body Name	Water Body ID	County	Use Classification	Pollutant	Location	2016 List
South Independent Streams	Sandy Creek	608811	Adams	Fish & Wildlife	Biological Impairment	From Confluence Of Swafford Creek To Mouth At Homochitto Creek	Category 5
South Independent Streams	Bayou Pierre	602812	Claiborne	Fish & Wildlife	pH	Near Carlisle From The Confluence With Storm Creek To The 6029 Mws Boundary Near The Confluence With Whiskey Branch	moved to category 4A TMDL complete 12/4/2014 #602812
Tennessee River	Pennywinkle Creek	701511	Tishomingo	Fish & Wildlife	Biological Impairment	At Iuka From Headwaters To Alabama State Line	Moved to category 2
Tennessee River	Bear Creek	701111	Tishomingo	Fish & Wildlife	pH	Near Burnstown From Unnamed Tributary North Of County Road 86 To Alabama	Category 5
Tombigbee River	Goodfood Creek	807012	Chickasaw, Pontotoc	Fish & Wildlife	Sediment / Siltation	From Headwaters To Mouth At Chuquatonchee Creek	Category 5
Tombigbee River	Loakfoma Lake	812911	Noxubee	Fish & Wildlife	Organic Enrichment / Low Dissolved Oxygen	Near Oktoc Near Dam	Category 5
Tombigbee River	Loakfoma Lake	812911	Noxubee	Fish & Wildlife	pH	Near Oktoc Near Dam	Category 5
Tombigbee River	Sand Creek	821212	Clay	Fish & Wildlife	Biological Impairment	From Headwaters To Confluence With Old Field Creek	Category 5
Tombigbee River	Town Creek	804111	Monroe	Fish & Wildlife	Biological Impairment	From Headwaters To Confluence With Fuller Creek	Replaced MS011T
Tombigbee River	Town Creek	804211	Monroe	Fish & Wildlife	Biological Impairment	From Confluence With Fuller Creek To Mouth At Tenn-Tom Waterway	Replaced MS011T
Yazoo River	Splinter Creek	907412	Lafayette	Fish & Wildlife	Biological Impairment	Near Taylor From Headwaters To Mouth At Yocona River	Moved to category 2
Yazoo River	Cherry Creek	901212	Pontotoc	Fish & Wildlife	Biological Impairment	From Headwaters To Mouth At Lappatubby Creek	Category 5

Basin	Water Body Name	Water Body ID	County	Use Classification	Pollutant	Location	2016 List
Yazoo River	Beaver Bayou	935912	Sunflower	Fish & Wildlife	Organic Enrichment / Low Dissolved Oxygen	From Headwaters To Mws 9360 Boundary	New MWS #
Yazoo River	Beaver Bayou	936012	Sunflower	Fish & Wildlife	Organic Enrichment / Low Dissolved Oxygen	From Mws 9359 Boundary To Mouth At Mound Bayou	New MWS #
Yazoo River	Red Banks Creek	910212	DeSoto	Fish & Wildlife	Biological Impairment	From Mws 9101 Boundary To Mouth At Pigeon Roost Creek	Category 5
Yazoo River	Shutispear Creek	914011	Calhoun, Webster	Fish & Wildlife	Biological Impairment	From The Headwaters To The Mws9139 Boundary At The Yalobusha River Flood Plain	Category 5
Yazoo River	Lake Henry	938312	Leflore	Fish & Wildlife	Chlorides	Just South Of Belzoni Off Hwy 49W	Category 5
Yazoo River	Lake Henry	938312	Leflore	Fish & Wildlife	Organic Enrichment / Low Dissolved Oxygen	Just South Of Belzoni Off Hwy 49W	Category 5
Yazoo River	Spring Branch	941411	Holmes	Fish & Wildlife	Biological Impairment	From Headwaters To Mouth At Millstone Bayou	Category 5
Yazoo River	Bear Bayou	951412	Sunflower	Fish & Wildlife	Organic Enrichment / Low Dissolved Oxygen	From Headwaters To Mouth At Quiver River	moved to category 4A TMDL complete 12/4/2014 65181
Yazoo River	Little Tallahatchie River	901711	Union	Fish & Wildlife	Biological Impairment	From Confluence With Mud Creek To Mws 9019 Boundary	Replaced MS228M
Yazoo River	Little Tallahatchie River	901911	Union, Marshall	Fish & Wildlife	Biological Impairment	From Mws 9017 Boundary To Confluence With Fice Creek	Replaced MS228M

Basin	Water Body Name	Water Body ID	County	Use Classification	Pollutant	Location	2016 List
Yazoo River	Moore Bayou	931912	Coahoma	Fish & Wildlife	Biological Impairment	From Headwaters To Mouth At Cassidy Bayou	Replaced MS274M
Yazoo River	James Wolf Creek	910611	Tate	Fish & Wildlife	Biological Impairment	From Headwaters To Mws 9015 Boundary At Hwy 4	Replaced MS305M1
Yazoo River	James Wolf Creek	910512	Tate	Fish & Wildlife	Biological Impairment	From Mws 9106 Boundary At Hwy 4 To Mouth At Hickahala Creek	Replaced MS305M1
Yazoo River	Skuna River Canal	914811	Pontotoc	Fish & Wildlife	Biological Impairment	From Headwaters To Confluence With Brush Creek	Replaced MS340LB
Yazoo River	Skuna River Canal	914911	Pontotoc, Chickasaw	Fish & Wildlife	Biological Impairment	From Confluence With Brush Creek To The Boundary With Mws 9150	Replaced MS340LB
Yazoo River	Skuna River Canal	915011	Chickasaw, Calhoun	Fish & Wildlife	Biological Impairment	From Boundary Of Mws 9149 To Mws 9152 Boundary	Replaced MS340LB
Yazoo River	Skuna River Canal	915212	Pontotoc, Chickasaw, Calhoun	Fish & Wildlife	Biological Impairment	From Mws 9150 Boundary To Confluence With Kittyhutta Creek	Replaced MS340LB
Yazoo River	Little Bogue	916911	Montgomery, Webster	Fish & Wildlife	Biological Impairment	Near Duckworth From Headwaters To Confluence With Caffee Branch	Replaced MS340LB
Yazoo River	Little Bogue	917011	Montgomery	Fish & Wildlife	Biological Impairment	From Confluence With Caffee Branch To Confluence With Powell Creek	Replaced MS340LB
Yazoo River	Little Bogue	917111	Montgomery, Grenada	Fish & Wildlife	Biological Impairment	From Confluence With Powell Creek To Batapan Bogue	Replaced MS340LB
Yazoo River	Eagle Lake	948812	Warren	Fish & Wildlife	Organic Enrichment / Low Dissolved Oxygen	Entire Lake Near Eagle Bend	New MWS #
Yazoo River	Eagle Lake	948812	Warren	Fish & Wildlife	pH	Entire Lake Near Eagle Bend	New MWS #
Yazoo River	Hubbard Creek	933711	Tallahatchie	Fish & Wildlife	Biological Impairment	Near Tandy From Headwaters To Southlake Bayou	New MWS #

Basin	Water Body Name	Water Body ID	County	Use Classification	Pollutant	Location	2016 List
Yazoo River	Pecan Bayou	938511	Sunflower	Fish & Wildlife	Organic Enrichment / Low Dissolved Oxygen	Near Doddsville From Headwaters To Mouth At Quiver River	New MWS #
Yazoo River	Skuna River	915311	Calhoun	Fish & Wildlife	Biological Impairment	From Confluence With Old River Run To Confluence Thompsons Creek	Category 5
Yazoo River	Whites Creek	930111	DeSoto, Tunica	Fish & Wildlife	Biological Impairment	Near Prichard From Headwaters To The Lake Comorant Bayou	New MWS #

Source: Miss. Code Ann. §§ 49-2-1, et seq. and 49-17-1, et seq.

REFERENCES

MDEQ. 2003. *Development and Application of the Mississippi Benthic Index of Stream Quality (M-BISQ)*. Office of Pollution Control.

MDEQ. 2007. *Mississippi 2006 Section 303(d) List of Impaired Water Bodies*. Office of Pollution Control.

MDEQ. 2008. *Mississippi 2008 Section 303(d) List of Impaired Water Bodies*. Office of Pollution Control.

MDEQ. 2013. *MISSISSIPPI CALM (Consolidated Assessment and Listing Methodology) 2014 Assessment and Listing Cycle*. Office of Pollution Control.

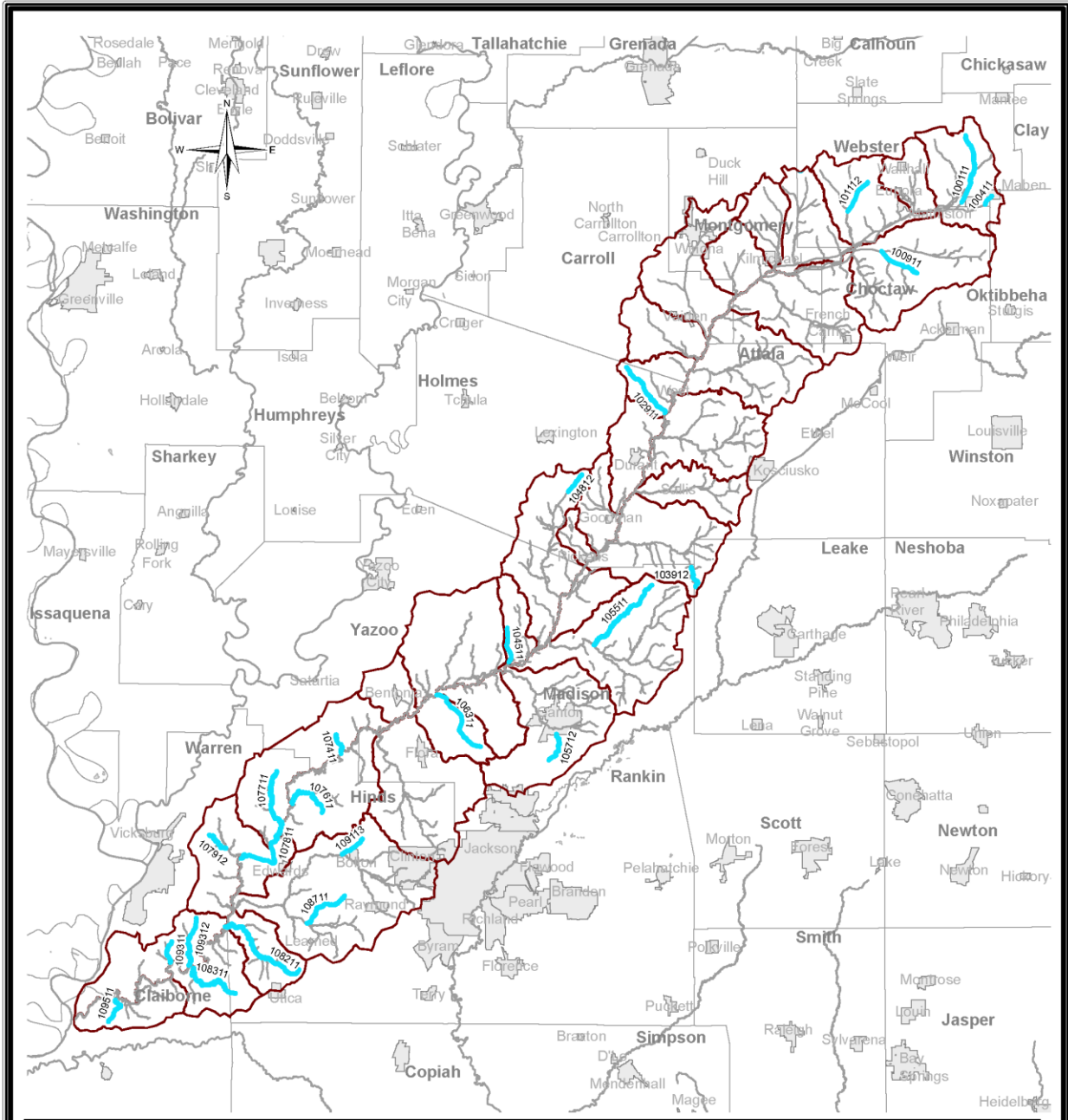
MDEQ. 2006. *NRCS State Watershed Map and Table*. Office of Pollution Control.

MDEQ. 2012. *State of Mississippi Water Quality Criteria for Intrastate, Interstate and Coastal Waters*. Office of Pollution Control.

MDEQ. 2006. *USGS and MDEQ State 12 Digit Watershed Atlas*. Office of Pollution Control.

APPENDIX A ATLAS

Maps are included in Appendix A for each basin. Streams shown in blue are impaired streams. In some river basins, the maps were split into 8-digit Hydrologic Unit Codes to better fit the page. Basins with no current listings are not included.



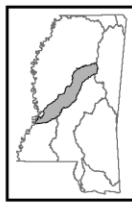
Impaired Waters Big Black River Basin

This map produced by the Department of Environmental Quality (MDEQ), Office of Pollution Control, Surface Water Division, Standards, Modeling, and TMDL Branch on May 24, 2016.

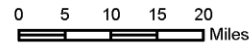
All map data is from the Mississippi Automated Resource Information System (MARIS) and MDEQ.

Map Projection: Mississippi Transverse Mercator

The Mississippi Department of Environmental Quality makes no warranties, expressed or implied, as to the accuracy, completeness, currentness, reliability, or suitability for any particular purpose, of the data contained on this map.

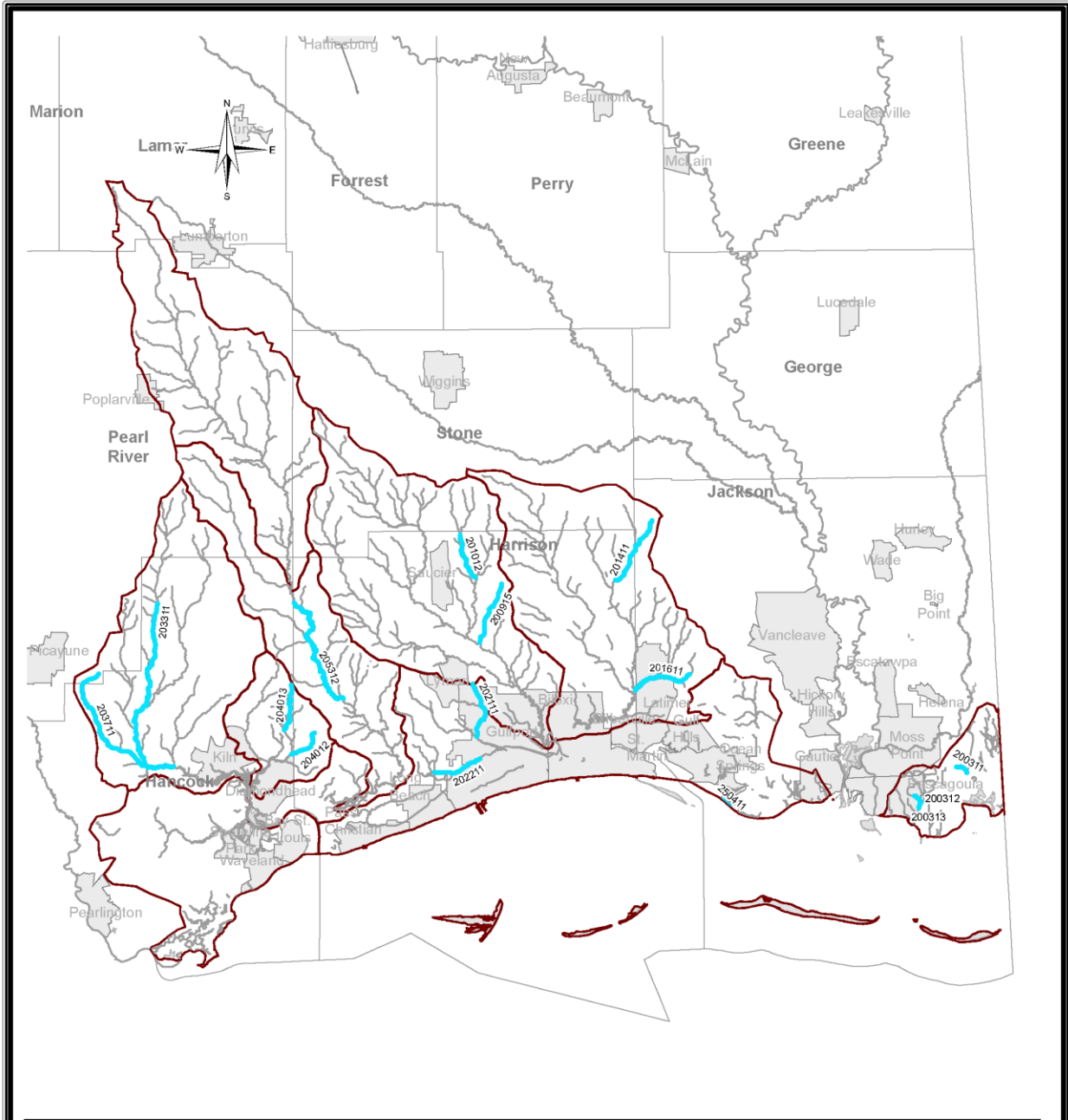


Mississippi Basins



Legend

- | | | | |
|--|--------------------|--|-----------|
| | Impaired Stream | | Watershed |
| | Impaired Waterbody | | Basin |
| | Perennial Stream | | City |
| | Waterbody | | County |



Impaired Waters Coastal Streams Basin

This map produced by the Department of Environmental Quality (MDEQ), Office of Pollution Control, Surface Water Division, Standards, Modeling, and TMDL Branch on May 24, 2016.

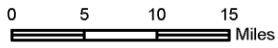
All map data is from the Mississippi Automated Resource Information System (MARIS) and MDEQ.

Map Projection: Mississippi Transverse Mercator

The Mississippi Department of Environmental Quality makes no warranties, expressed or implied, as to the accuracy, completeness, currentness, reliability, or suitability for any particular purpose, of the data contained on this map.

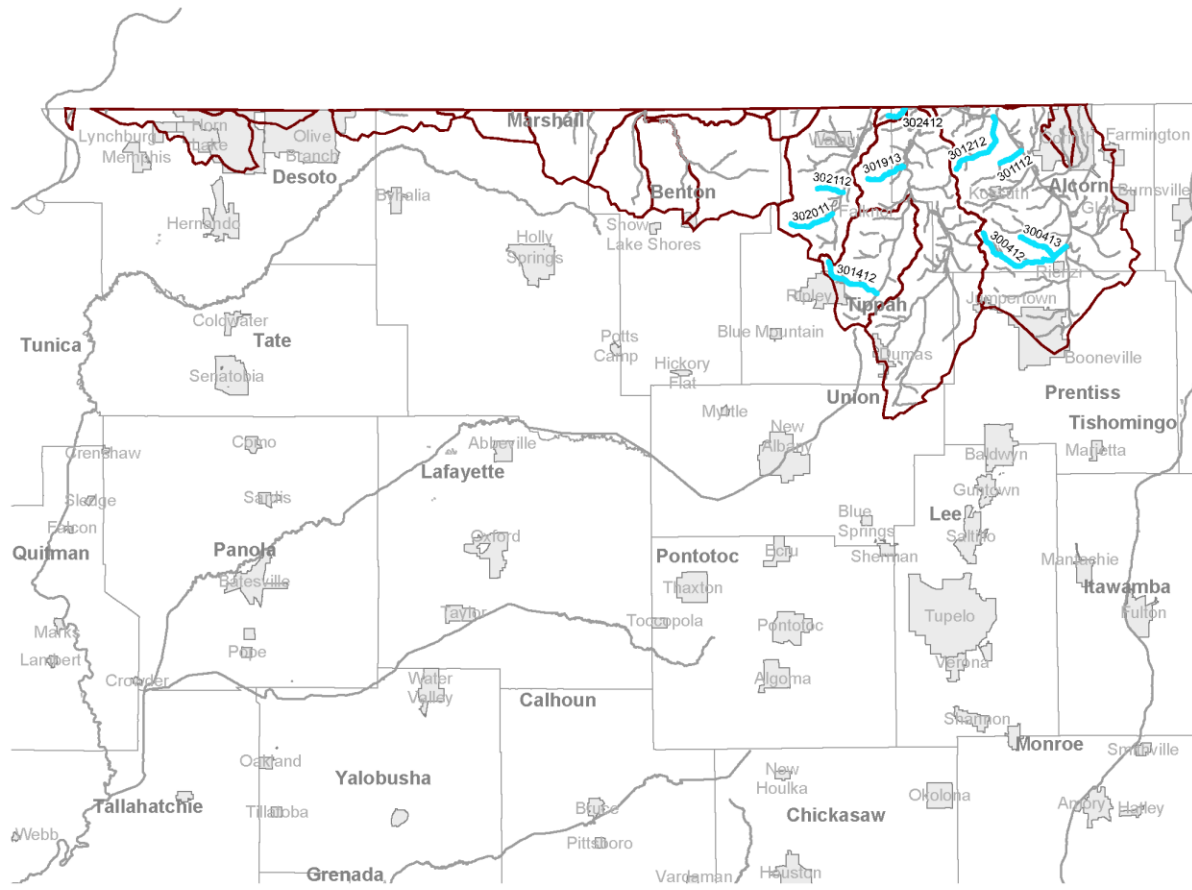
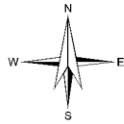


Mississippi Basins



Legend

- Impaired Stream
- Impaired Waterbody
- Perennial Stream
- Waterbody
- Watershed
- Basin
- City
- County



Impaired Waters North Independent Streams Basin

This map produced by the Department of Environmental Quality (MDEQ), Office of Pollution Control, Surface Water Division, Standards, Modeling, and TMDL Branch on May 24, 2016.

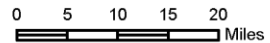
All map data is from the Mississippi Automated Resource Information System (MARIS) and MDEQ.

Map Projection: Mississippi Transverse Mercator

The Mississippi Department of Environmental Quality makes no warranties, expressed or implied, as to the accuracy, completeness, currentness, reliability, or suitability for any particular purpose, of the data contained on this map.

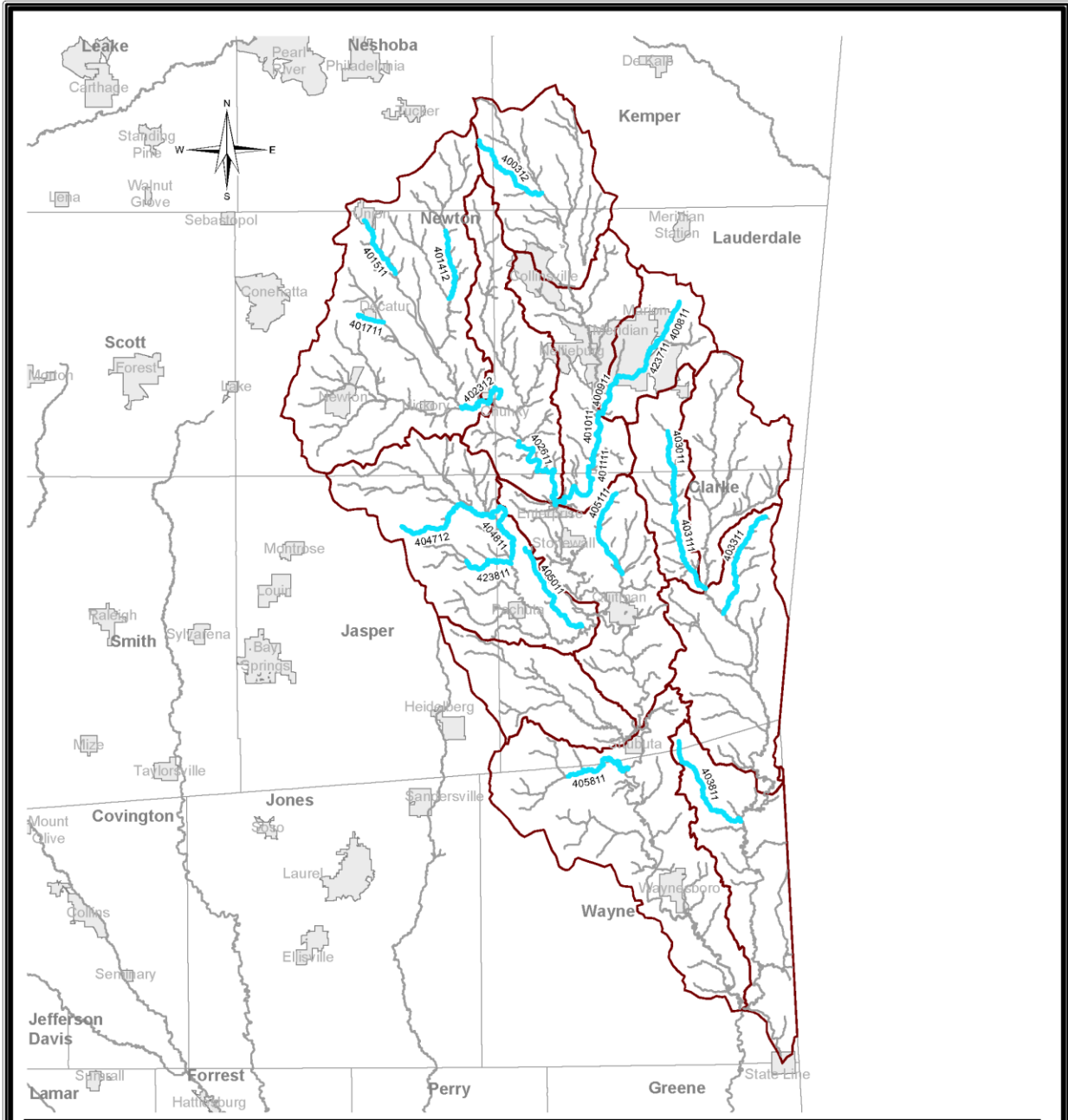


Mississippi Basins



Legend

- Impaired Stream
- Impaired Waterbody
- Perennial Stream
- Waterbody
- Watershed
- Basin
- City
- County



Impaired Waters

Pascagoula River Basin HUCs 03170001 and 03170002

This map produced by the Department of Environmental Quality (MDEQ), Office of Pollution Control, Surface Water Division, Standards, Modeling, and TMDL Branch on May 24, 2016.

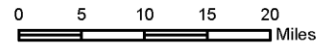
All map data is from the Mississippi Automated Resource Information System (MARIS) and MDEQ.

Map Projection: Mississippi Transverse Mercator

The Mississippi Department of Environmental Quality makes no warranties, expressed or implied, as to the accuracy, completeness, currentness, reliability, or suitability for any particular purpose, of the data contained on this map.

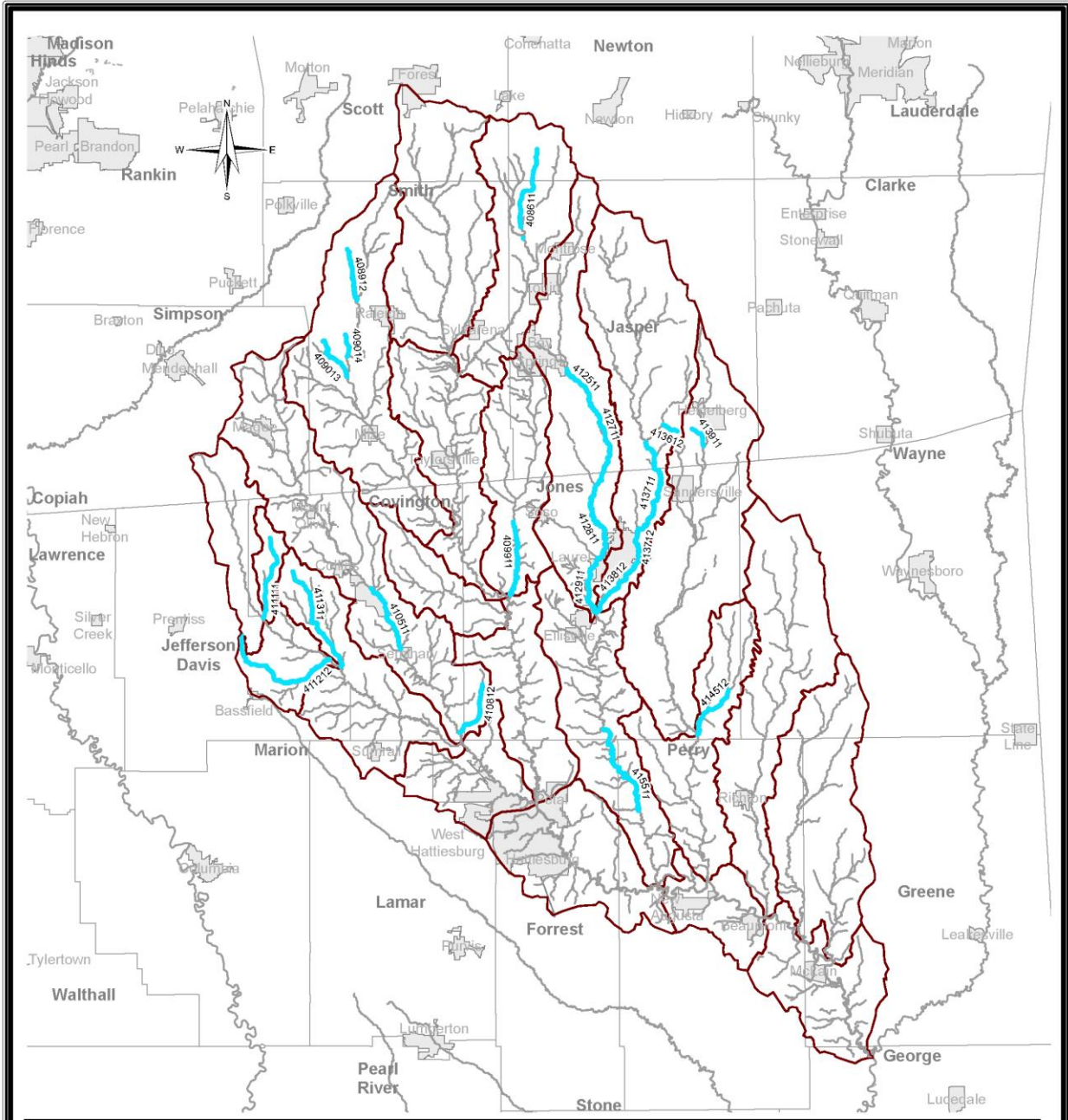


Mississippi Basins



Legend

- Impaired Stream
- Impaired Waterbody
- Perennial Stream
- Waterbody
- Watershed
- Basin
- City
- County



Impaired Waters

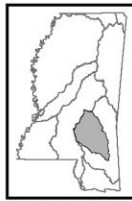
Pascagoula River Basin HUCs 03170004 and 03170005

This map produced by the Department of Environmental Quality (MDEQ), Office of Pollution Control, Surface Water Division, Standards, Modeling, and TMDL Branch on May 24, 2016.

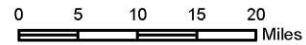
All map data is from the Mississippi Automated Resource Information System (MARIS) and MDEQ.

Map Projection: Mississippi Transverse Mercator

The Mississippi Department of Environmental Quality makes no warranties, expressed or implied, as to the accuracy, completeness, currentness, reliability, or suitability for any particular purpose, of the data contained on this map.

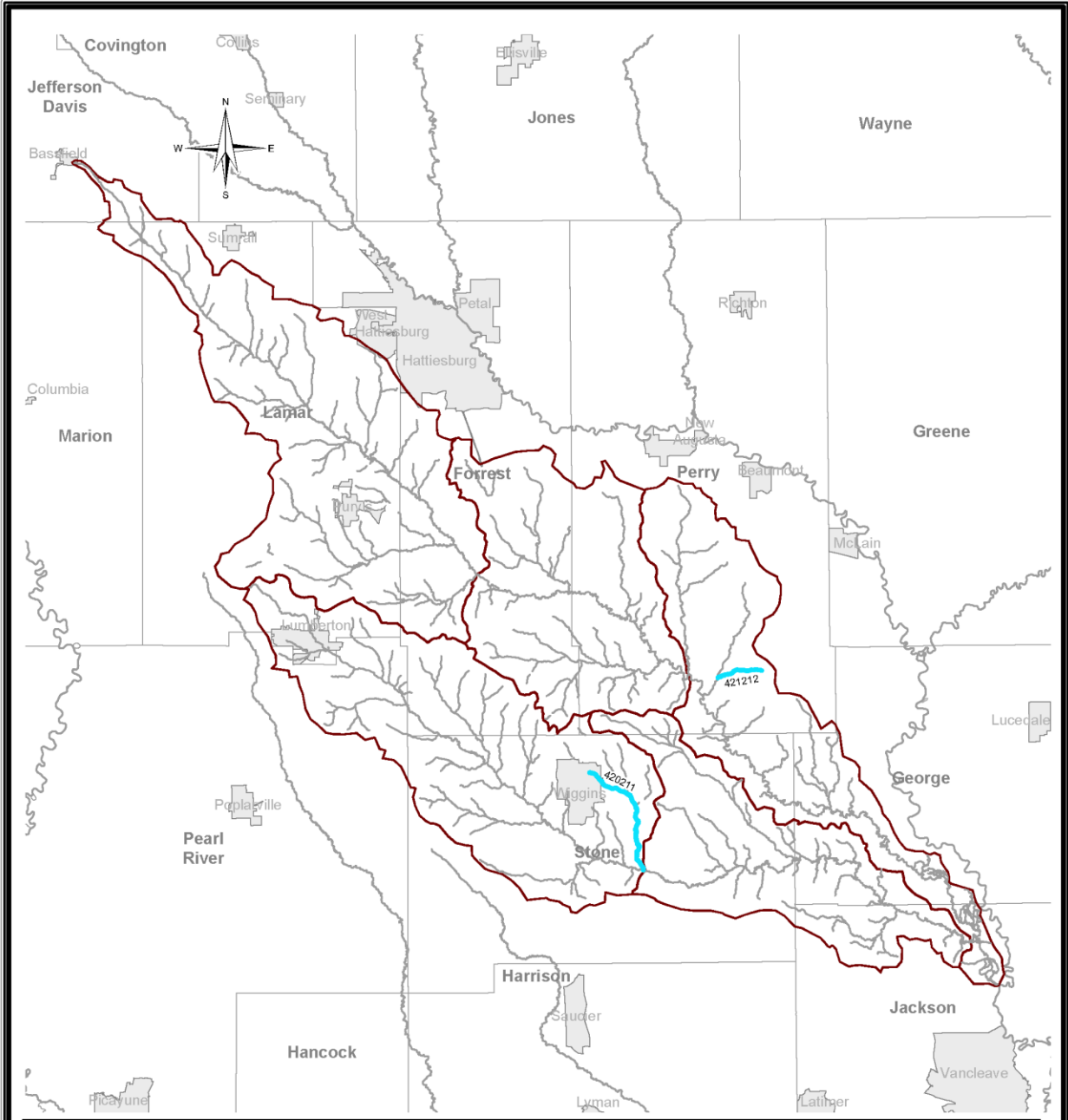


Mississippi Basins



Legend

- Impaired Stream
- Impaired Waterbody
- Perennial Stream
- Waterbody
- Watershed
- Basin
- City
- County



Impaired Waters Pascagoula River Basin HUC 03170007

This map produced by the Department of Environmental Quality (MDEQ), Office of Pollution Control, Surface Water Division, Standards, Modeling, and TMDL Branch on May 24, 2016.

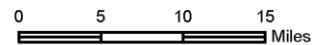
All map data is from the Mississippi Automated Resource Information System (MARIS) and MDEQ.

Map Projection: Mississippi Transverse Mercator

The Mississippi Department of Environmental Quality makes no warranties, expressed or implied, as to the accuracy, completeness, currentness, reliability, or suitability for any particular purpose, of the data contained on this map.

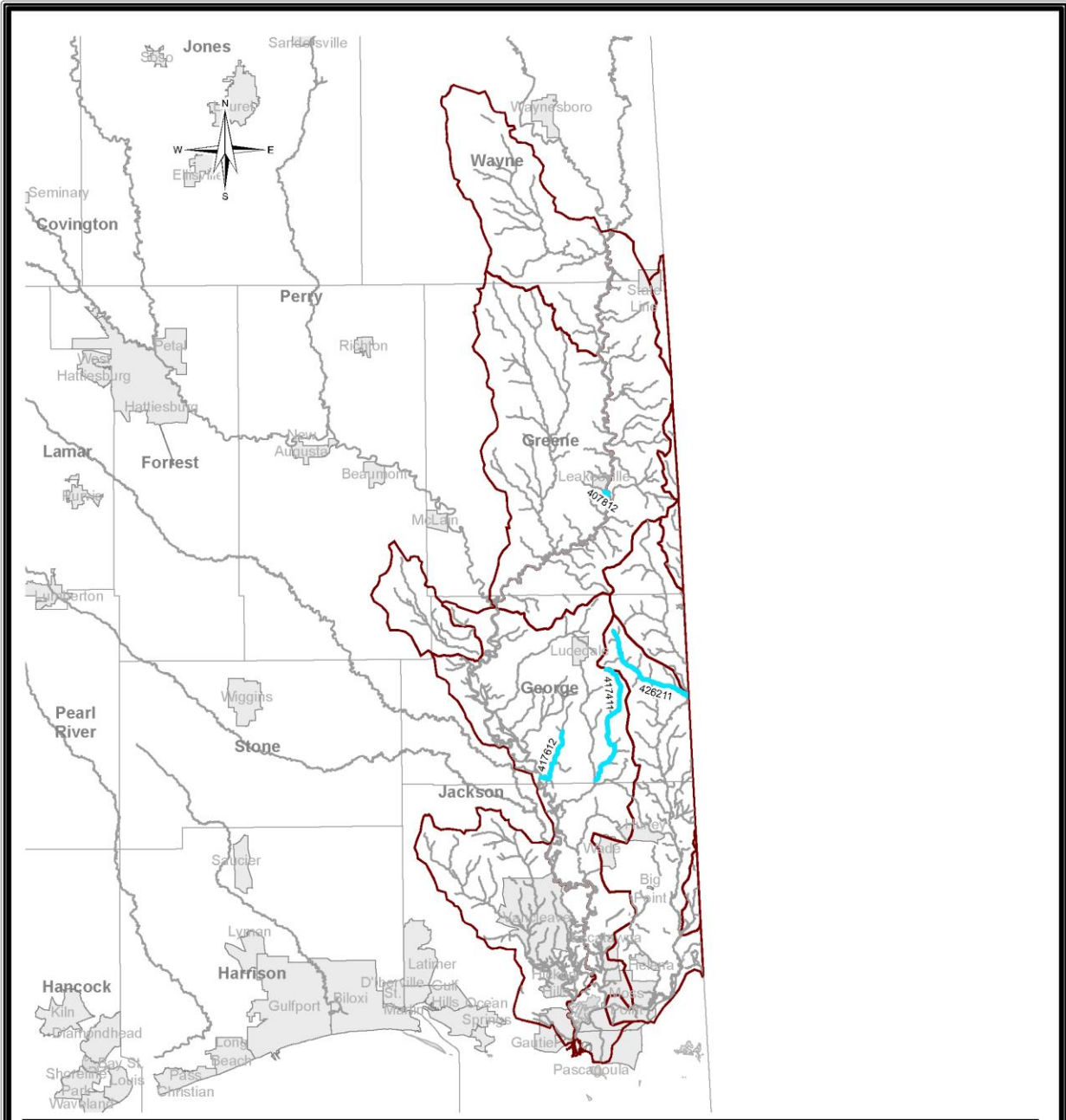


Mississippi Basins



Legend

- Impaired Stream
- Impaired Waterbody
- Perennial Stream
- Waterbody
- Watershed
- Basin
- City
- County



Impaired Waters

Pascagoula River Basin HUCs 03170003, 03170006, and 03170008

This map produced by the Department of Environmental Quality (MDEQ), Office of Pollution Control, Surface Water Division, Standards, Modeling, and TMDL Branch on May 24, 2016.

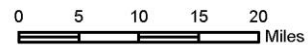
All map data is from the Mississippi Automated Resource Information System (MARIS) and MDEQ.

Map Projection: Mississippi Transverse Mercator








The Mississippi Department of Environmental Quality makes no warranties, expressed or implied, as to the accuracy, completeness, currentness, reliability, or suitability for any particular purpose, of the data contained on this map.

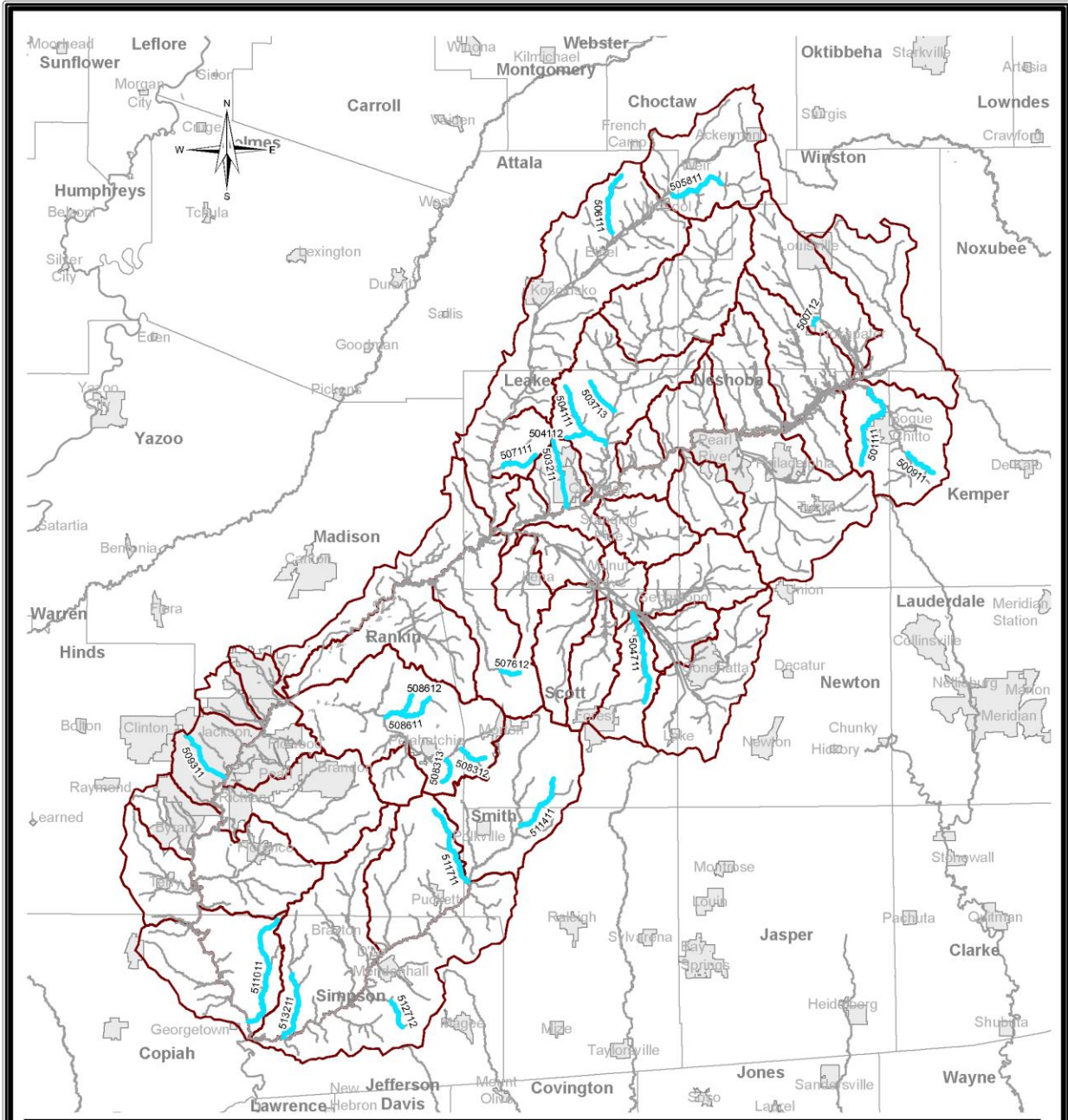


Mississippi Basins



Legend

-  Impaired Stream
-  Impaired Waterbody
-  Perennial Stream
-  Waterbody
-  Watershed
-  Basin
-  City
-  County



Impaired Waters

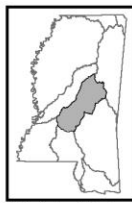
Pearl River Basin HUCs 03180001 and 03180002

This map produced by the Department of Environmental Quality (MDEQ), Office of Pollution Control, Surface Water Division, Standards, Modeling, and TMDL Branch on May 24, 2016.

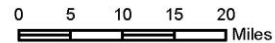
All map data is from the Mississippi Automated Resource Information System (MARIS) and MDEQ.

Map Projection: Mississippi Transverse Mercator

The Mississippi Department of Environmental Quality makes no warranties, expressed or implied, as to the accuracy, completeness, currentness, reliability, or suitability for any particular purpose, of the data contained on this map.

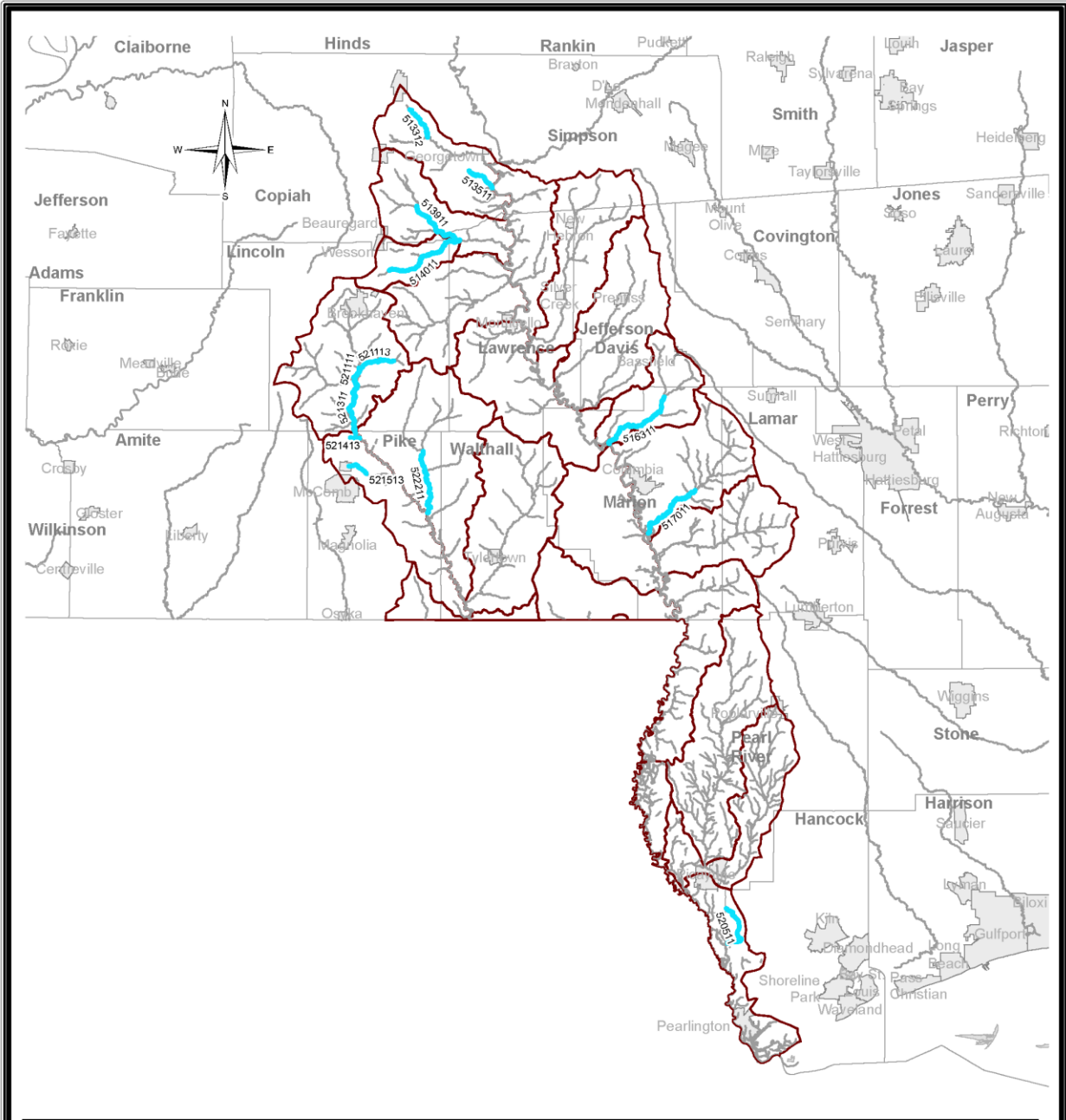


Mississippi Basins



Legend

- | | | | |
|--|--------------------|--|-----------|
| | Impaired Stream | | Watershed |
| | Impaired Waterbody | | Basin |
| | Perennial Stream | | City |
| | Waterbody | | County |



Impaired Waters

Pearl River Basin HUCs 03180003, 03180004, and 03180005

This map produced by the Department of Environmental Quality (MDEQ), Office of Pollution Control, Surface Water Division, Standards, Modeling, and TMDL Branch on May 24, 2016.

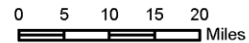
All map data is from the Mississippi Automated Resource Information System (MARIS) and MDEQ.

Map Projection: Mississippi Transverse Mercator

The Mississippi Department of Environmental Quality makes no warranties, expressed or implied, as to the accuracy, completeness, currentness, reliability, or suitability for any particular purpose, of the data contained on this map.

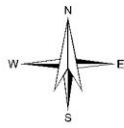
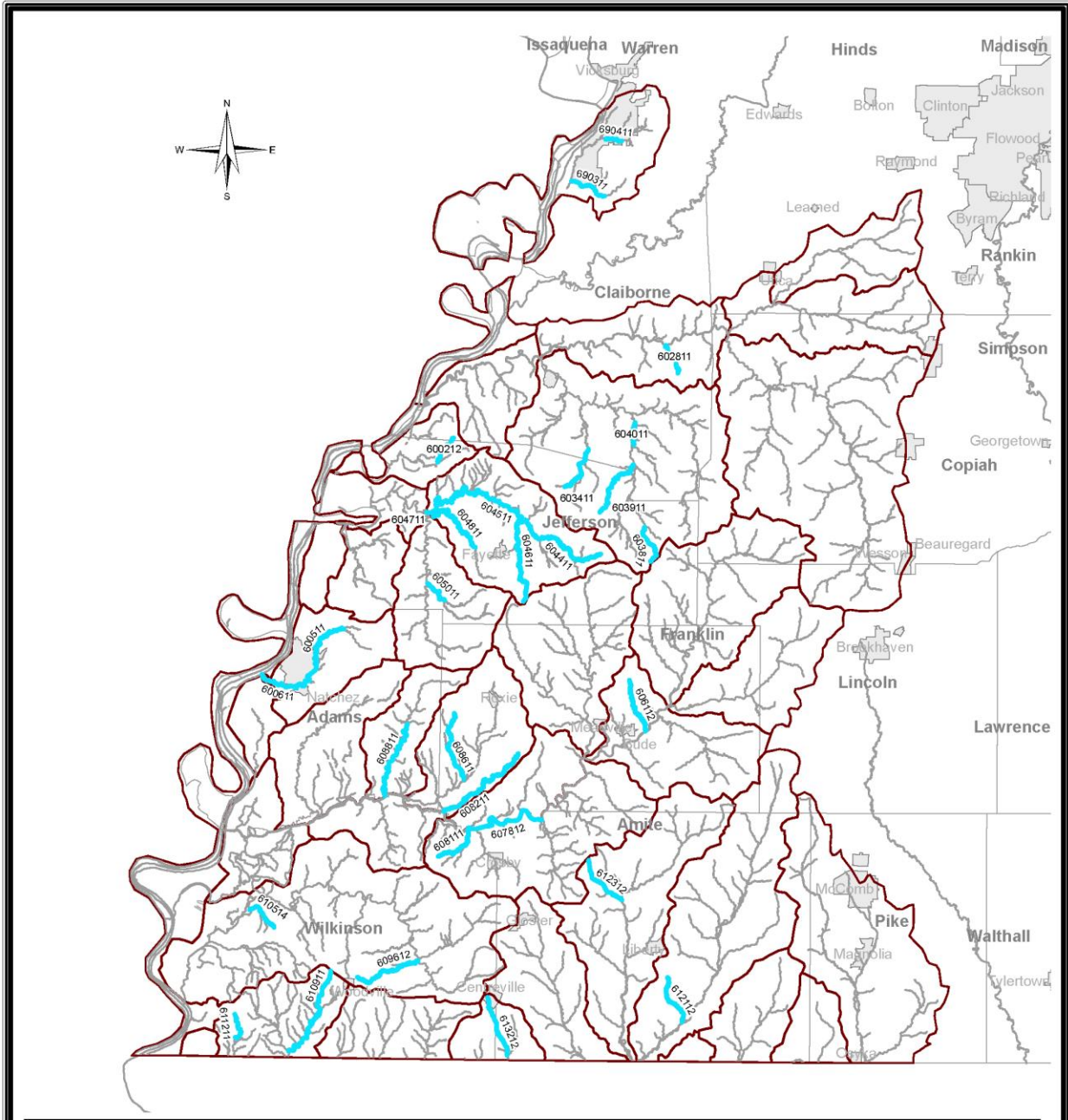


Mississippi Basins



Legend

- Impaired Stream
- Impaired Waterbody
- Perennial Stream
- Waterbody
- Watershed
- Basin
- City
- County



Impaired Waters

South Independent Streams/Lower Mississippi River Basins

This map produced by the Department of Environmental Quality (MDEQ), Office of Pollution Control, Surface Water Division, Standards, Modeling, and TMDL Branch on May 24, 2016.

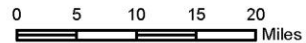
All map data is from the Mississippi Automated Resource Information System (MARIS) and MDEQ.

Map Projection: Mississippi Transverse Mercator

The Mississippi Department of Environmental Quality makes no warranties, expressed or implied, as to the accuracy, completeness, currentness, reliability, or suitability for any particular purpose, of the data contained on this map.

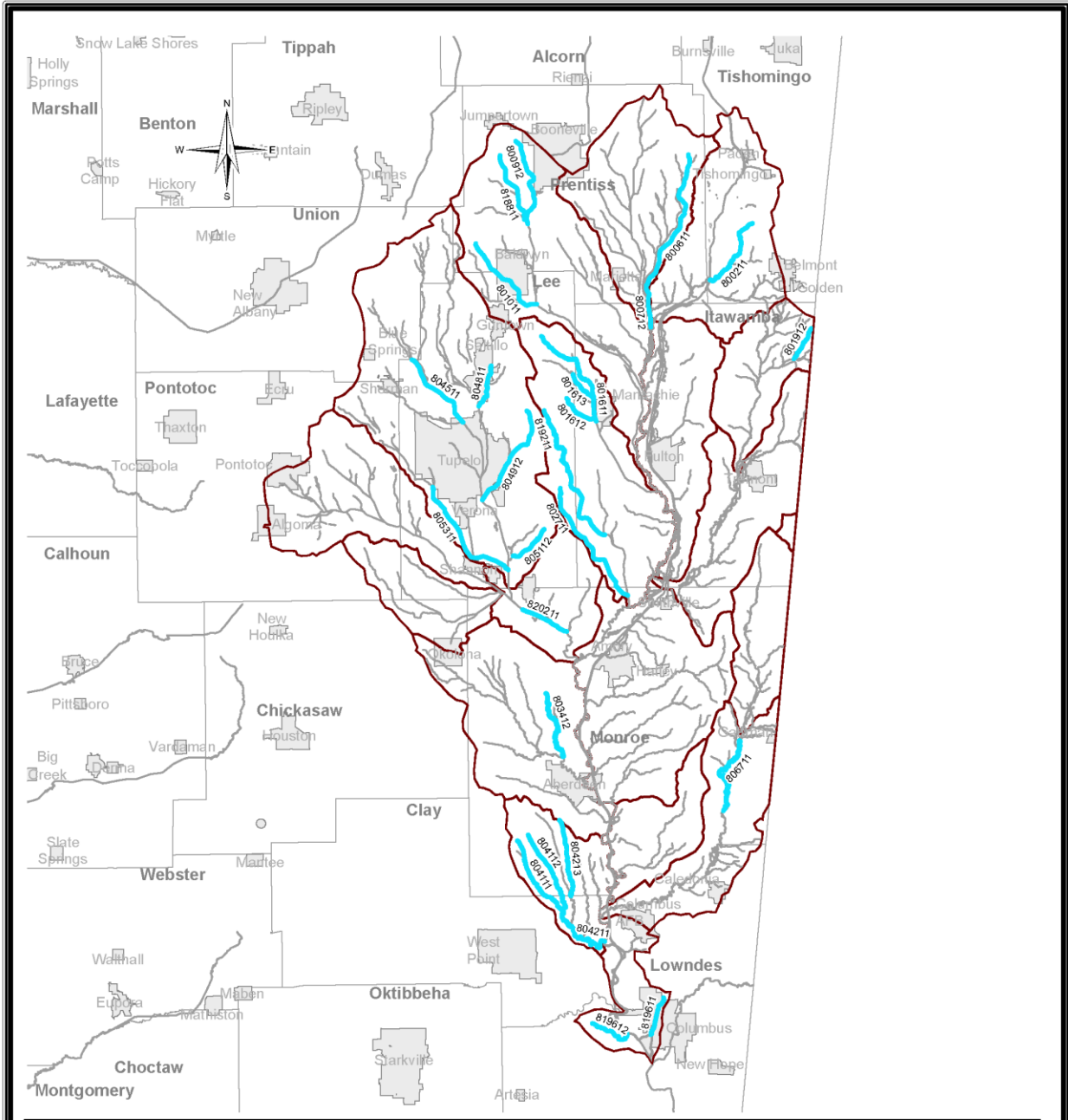


Mississippi Basins



Legend

- Impaired Stream
- Impaired Waterbody
- Perennial Stream
- Waterbody
- Watershed
- Basin
- City
- County



Impaired Waters

Tombigbee River Basin HUCs 03160101, 03160102, and 03160103

This map produced by the Department of Environmental Quality (MDEQ), Office of Pollution Control, Surface Water Division, Standards, Modeling, and TMDL Branch on May 24, 2016.

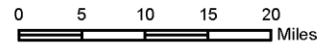
All map data is from the Mississippi Automated Resource Information System (MARIS) and MDEQ.

Map Projection: Mississippi Transverse Mercator

The Mississippi Department of Environmental Quality makes no warranties, expressed or implied, as to the accuracy, completeness, currentness, reliability, or suitability for any particular purpose, of the data contained on this map.

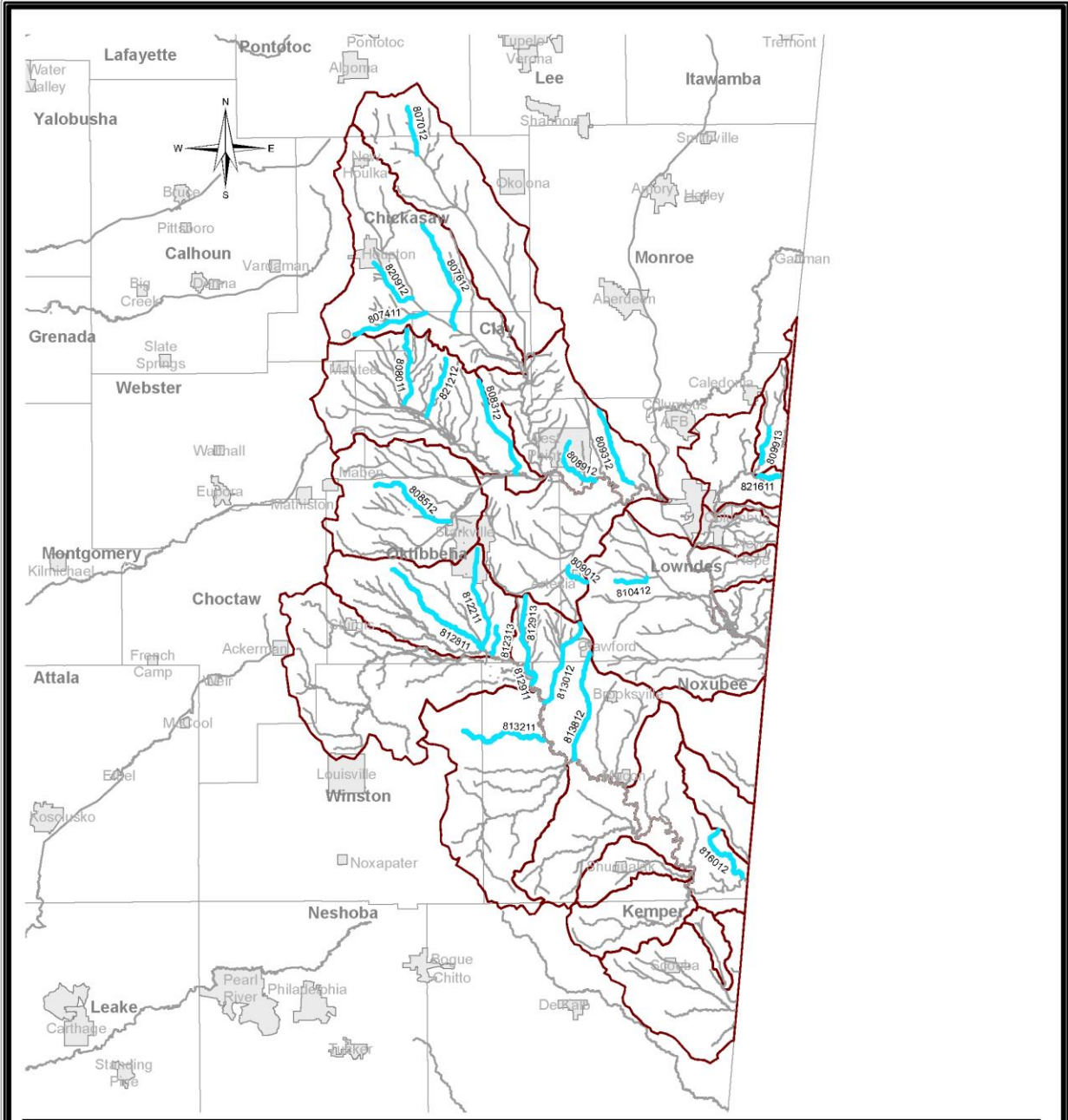


Mississippi Basins



Legend

- Impaired Stream
- Impaired Waterbody
- Perennial Stream
- Waterbody
- Watershed
- Basin
- City
- County



Impaired Waters

Tombigbee River Basin HUCs 03160104, 03160105, 03160106, and 03160108

This map produced by the Department of Environmental Quality (MDEQ), Office of Pollution Control, Surface Water Division, Standards, Modeling, and TMDL Branch on May 24, 2016.

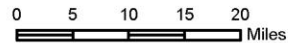
All map data is from the Mississippi Automated Resource Information System (MARIS) and MDEQ.

Map Projection: Mississippi Transverse Mercator

The Mississippi Department of Environmental Quality makes no warranties, expressed or implied, as to the accuracy, completeness, currentness, reliability, or suitability for any particular purpose, of the data contained on this map.

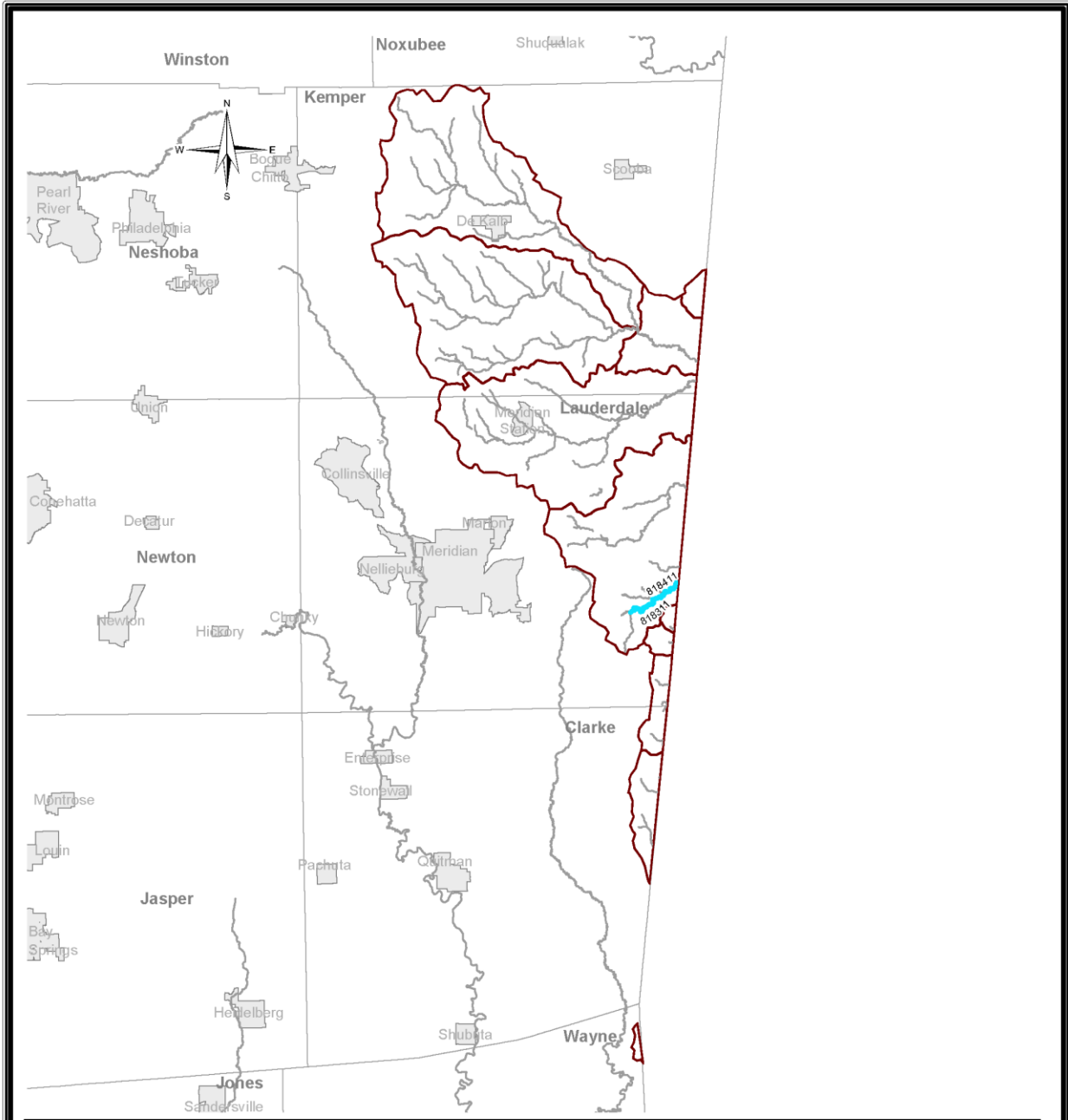


Mississippi Basins



Legend

- Impaired Stream
- Impaired Waterbody
- Perennial Stream
- Waterbody
- Watershed
- Basin
- City
- County



Impaired Waters

Tombigbee River Basin HUCs 03160201 and 03160202

This map produced by the Department of Environmental Quality (MDEQ), Office of Pollution Control, Surface Water Division, Standards, Modeling, and TMDL Branch on May 24, 2016.

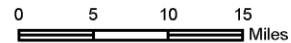
All map data is from the Mississippi Automated Resource Information System (MARIS) and MDEQ.

Map Projection: Mississippi Transverse Mercator

The Mississippi Department of Environmental Quality makes no warranties, expressed or implied, as to the accuracy, completeness, currentness, reliability, or suitability for any particular purpose, of the data contained on this map.

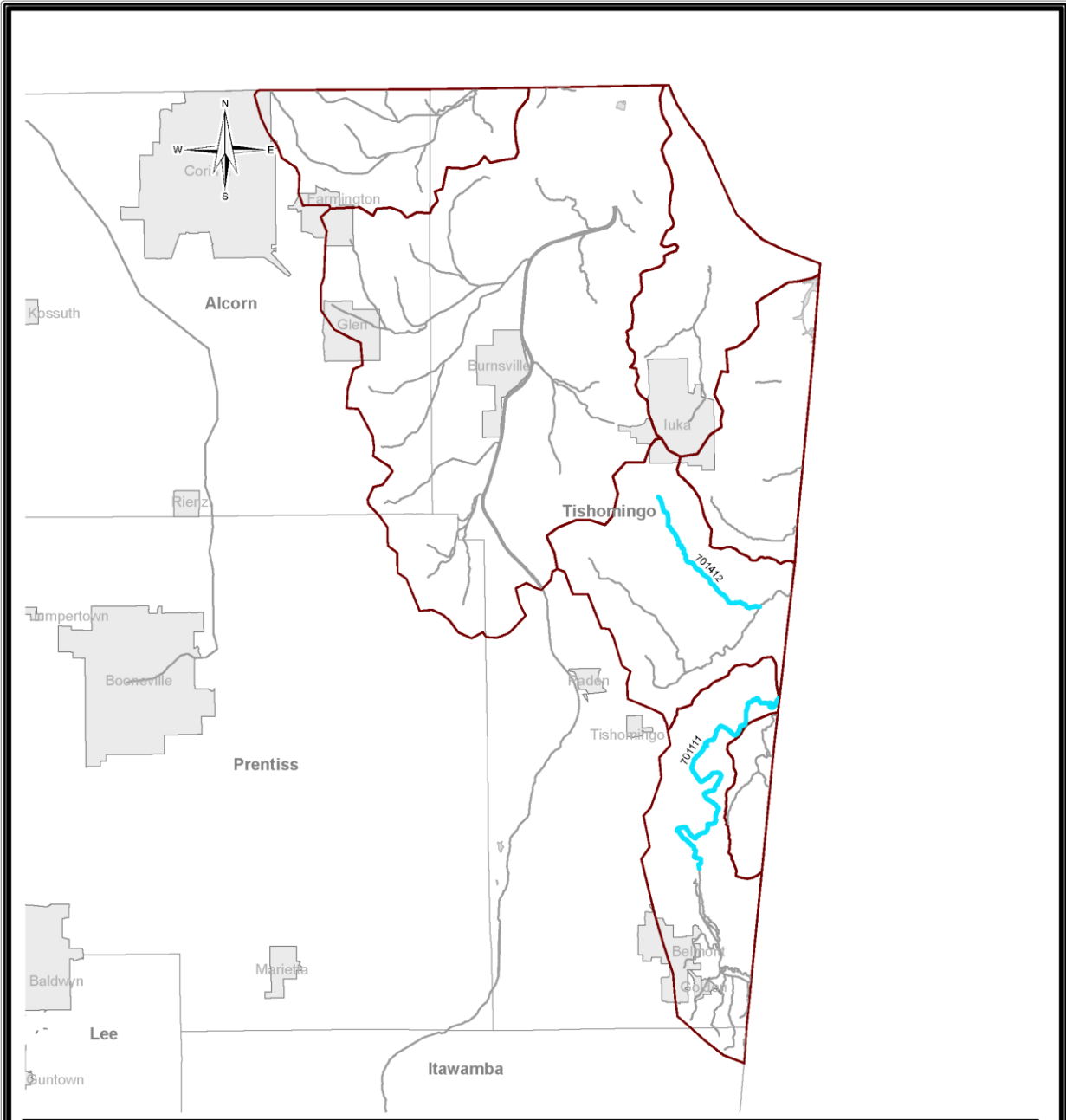


Mississippi Basins



Legend

- Impaired Stream
- Impaired Waterbody
- Perennial Stream
- Waterbody
- Watershed
- Basin
- City
- County



Impaired Waters Tennessee River Basin

This map produced by the Department of Environmental Quality (MDEQ), Office of Pollution Control, Surface Water Division, Standards, Modeling, and TMDL Branch on May 24, 2016.

All map data is from the Mississippi Automated Resource Information System (MARIS) and MDEQ.

Map Projection: Mississippi Transverse Mercator

The Mississippi Department of Environmental Quality makes no warranties, expressed or implied, as to the accuracy, completeness, currentness, reliability, or suitability for any particular purpose, of the data contained on this map.

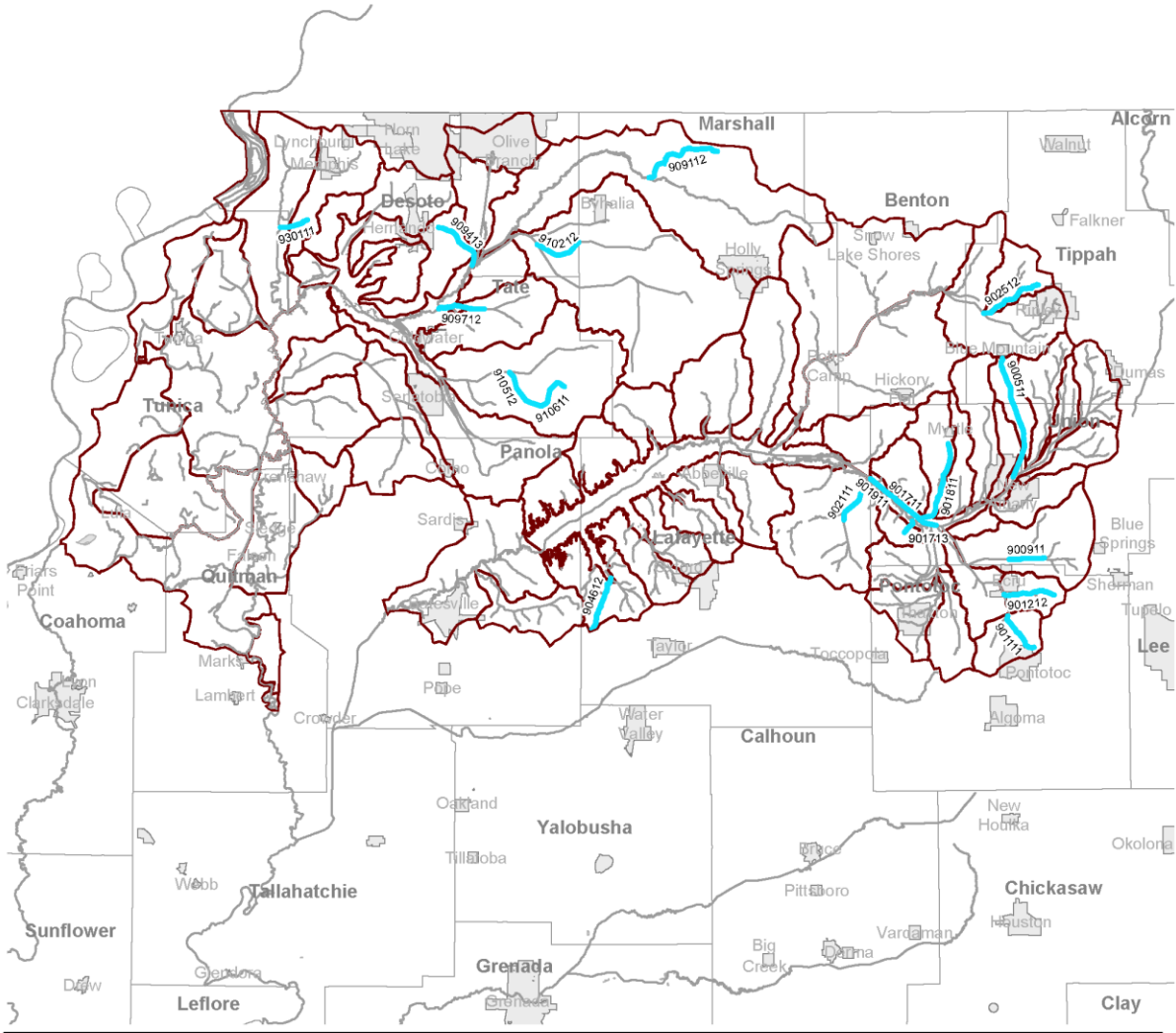
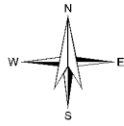


Mississippi Basins



Legend

- Impaired Stream
- Impaired Waterbody
- Perennial Stream
- Waterbody
- Watershed
- Basin
- City
- County



Impaired Waters

Yazoo/Upper Mississippi River Basin HUCs 08010100, 08020100, 08030201, and 08030204

This map produced by the Department of Environmental Quality (MDEQ), Office of Pollution Control, Surface Water Division, Standards, Modeling, and TMDL Branch on May 24, 2016.

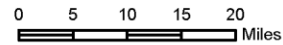
All map data is from the Mississippi Automated Resource Information System (MARIS) and MDEQ.

Map Projection: Mississippi Transverse Mercator

The Mississippi Department of Environmental Quality makes no warranties, expressed or implied, as to the accuracy, completeness, currentness, reliability, or suitability for any particular purpose, of the data contained on this map.

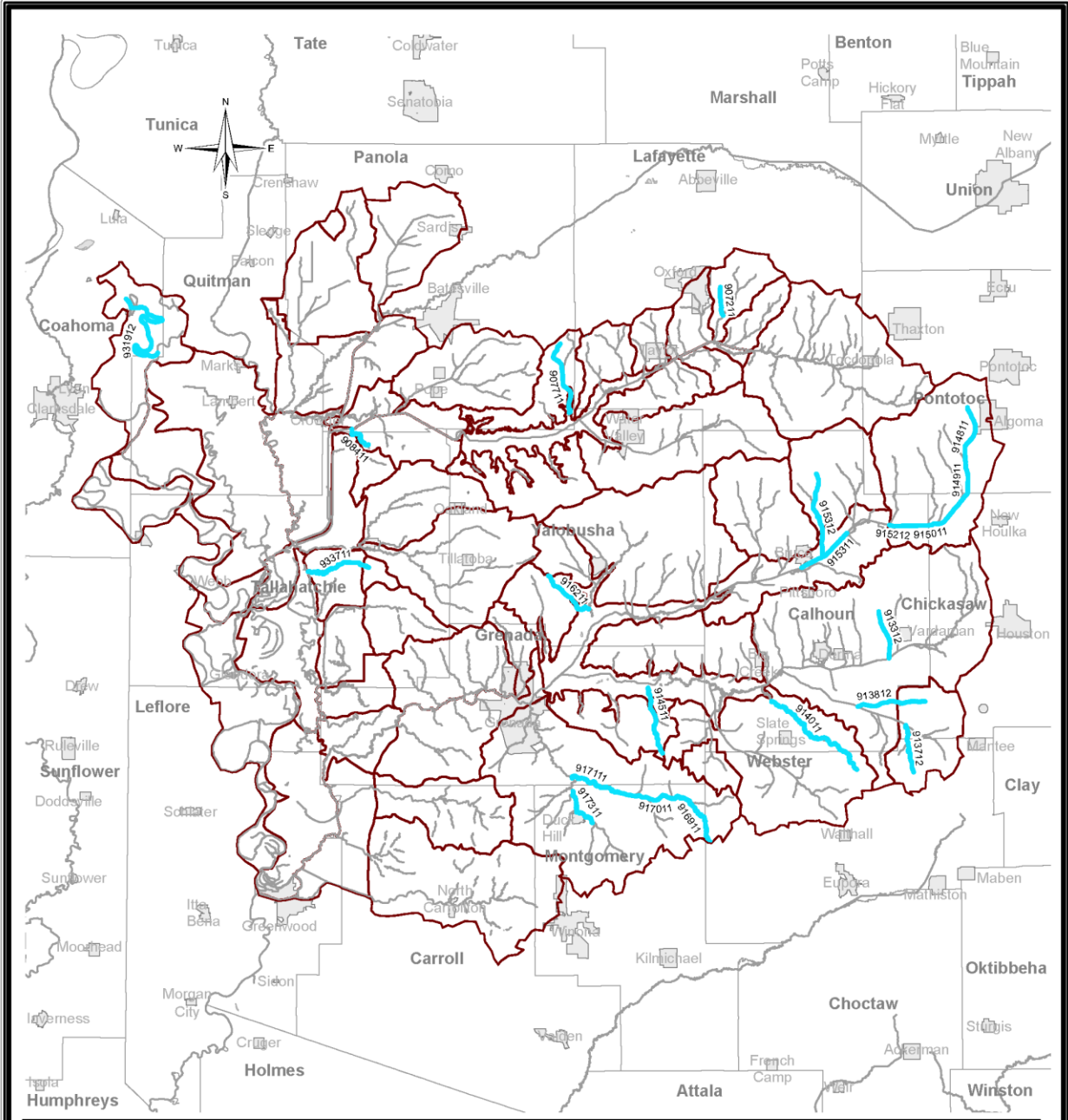


Mississippi Basins



Legend

- Impaired Stream
- Impaired Waterbody
- Perennial Stream
- Waterbody
- Watershed
- Basin
- City
- County



Impaired Waters

Yazoo River Basin HUCs 08030202, 08030203, and 08030205

This map produced by the Department of Environmental Quality (MDEQ), Office of Pollution Control, Surface Water Division, Standards, Modeling, and TMDL Branch on May 24, 2016.

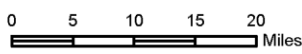
All map data is from the Mississippi Automated Resource Information System (MARIS) and MDEQ.

Map Projection: Mississippi Transverse Mercator

The Mississippi Department of Environmental Quality makes no warranties, expressed or implied, as to the accuracy, completeness, currentness, reliability, or suitability for any particular purpose, of the data contained on this map.

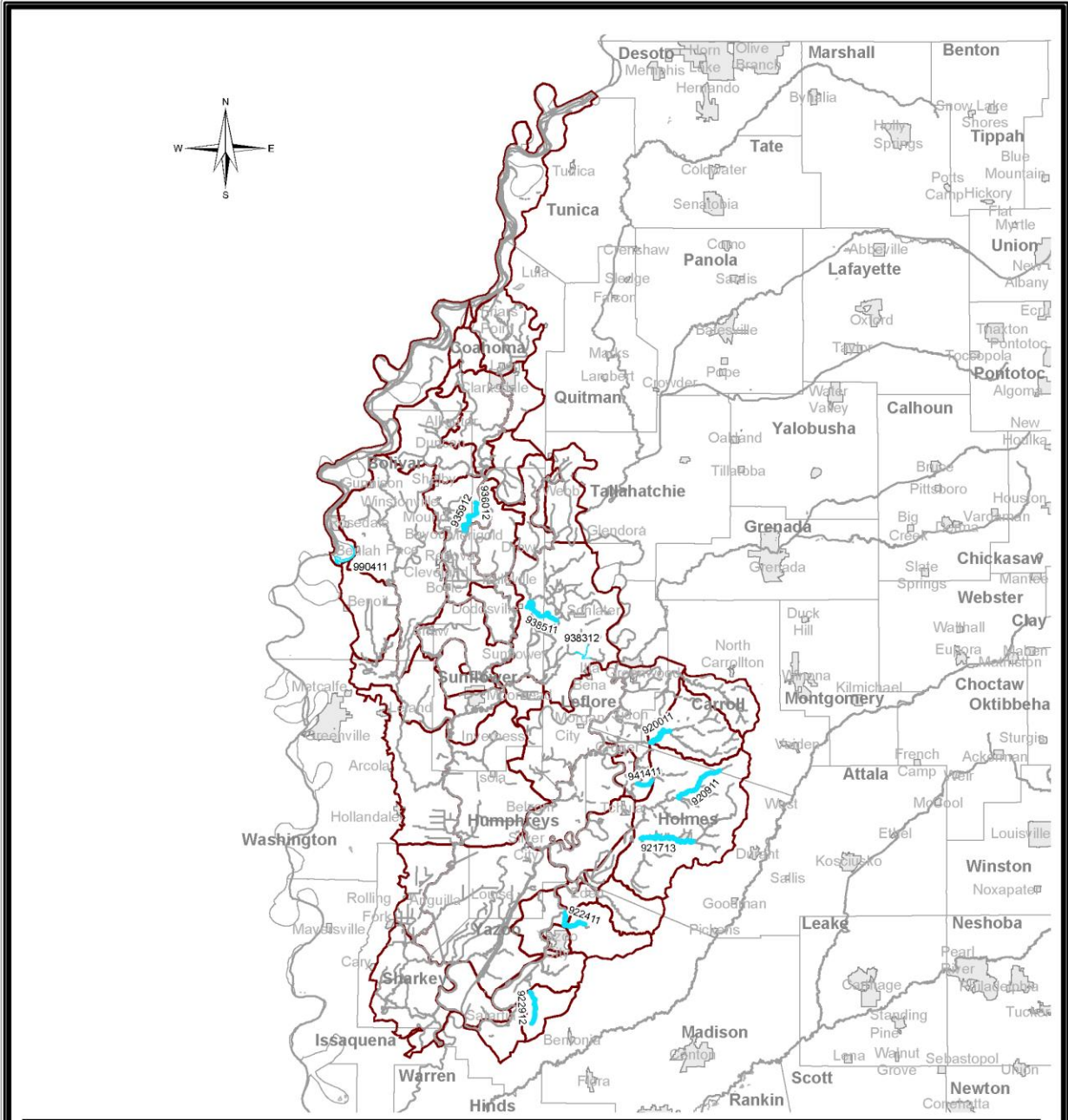


Mississippi Basins



Legend

- Impaired Stream
- Impaired Waterbody
- Perennial Stream
- Waterbody
- Watershed
- Basin
- City
- County



Impaired Waters

Yazoo/Upper Mississippi River Basin HUCs 08020100, 08030206, and 08030207

This map produced by the Department of Environmental Quality (MDEQ), Office of Pollution Control, Surface Water Division, Standards, Modeling, and TMDL Branch on May 24, 2016.

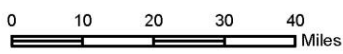
All map data is from the Mississippi Automated Resource Information System (MARIS) and MDEQ.

Map Projection: Mississippi Transverse Mercator

The Mississippi Department of Environmental Quality makes no warranties, expressed or implied, as to the accuracy, completeness, currentness, reliability, or suitability for any particular purpose, of the data contained on this map.

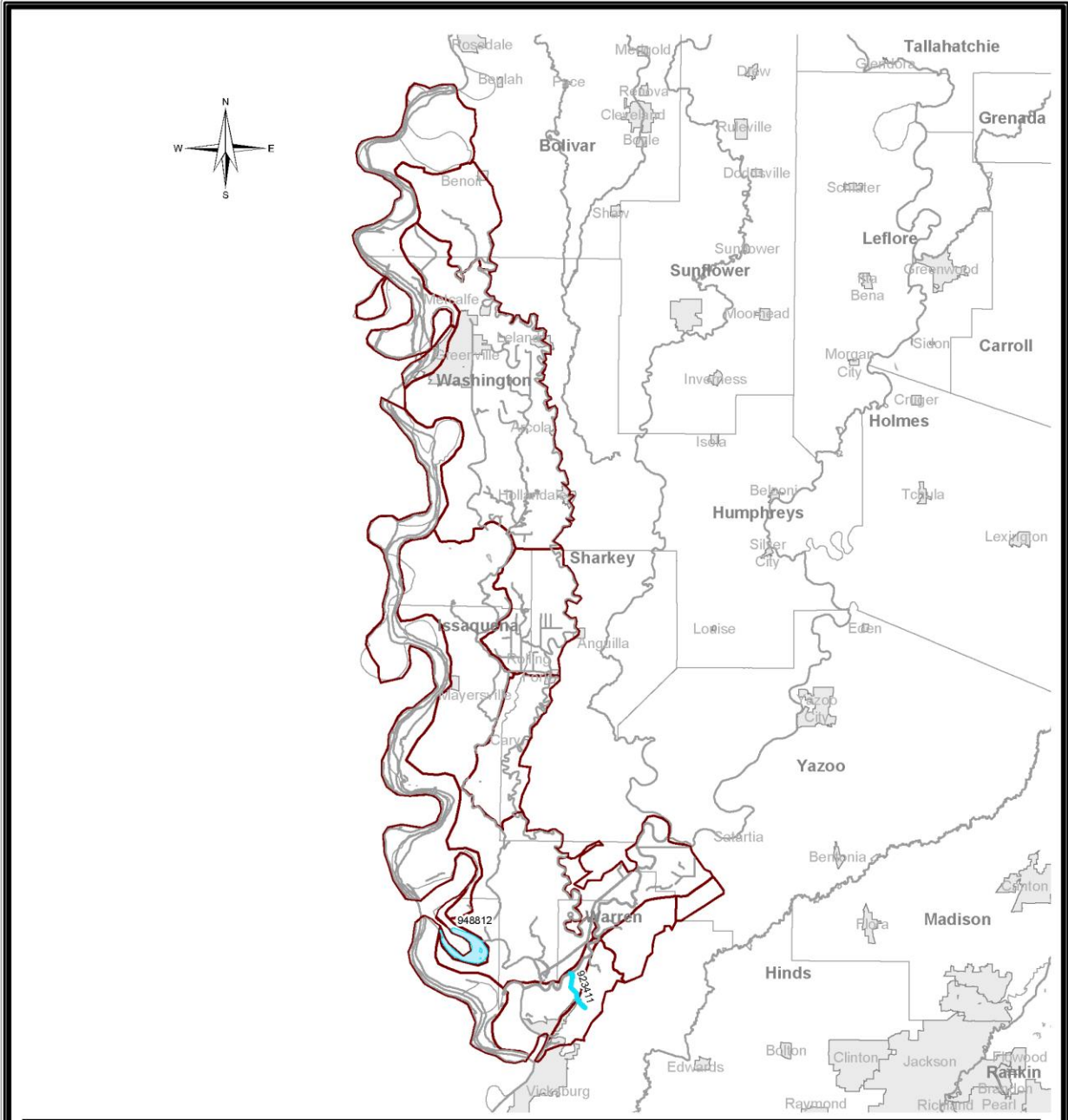


Mississippi Basins



Legend

- Impaired Stream
- Impaired Waterbody
- Perennial Stream
- Waterbody
- Watershed
- Basin
- City
- County



Impaired Waters

Yazoo/Upper Mississippi River Basin HUCs 08030100, 08030208, and 08030209

This map produced by the Department of Environmental Quality (MDEQ), Office of Pollution Control, Surface Water Division, Standards, Modeling, and TMDL Branch on May 24, 2016.

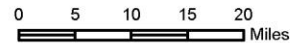
All map data is from the Mississippi Automated Resource Information System (MARIS) and MDEQ.

Map Projection: Mississippi Transverse Mercator

The Mississippi Department of Environmental Quality makes no warranties, expressed or implied, as to the accuracy, completeness, currentness, reliability, or suitability for any particular purpose, of the data contained on this map.



Mississippi Basins



Legend

- Impaired Stream
- Impaired Waterbody
- Perennial Stream
- Waterbody
- Watershed
- Basin
- City
- County