

REV

# MISSISSIPPI ASBESTOS DEMOLITION/RENOVATION NOTIFICATION FORM

Mail notification to: MDEQ Asbestos and Lead Branch, 515 E. Amite Street, Jackson, MS 39201

MDEQ Use Only: <input checked="" type="checkbox"/> Email <input type="checkbox"/> Mail <input type="checkbox"/> Hand Delivery		Postmark (mail only)	Date Received 08-28-2024	AI Number
I. Type of Notification (O=Original R=Revised C=Canceled A= Annual): R				
II. TYPE OF OPERATION (D=Demo O= Ordered Demo R=Renovation E=Emer. Renovation): R				
III. FACILITY DESCRIPTION (Include building name, number and floor or room number):				
Bldg. Name: State Government Office				
Address: 660 North Street				
City: Jackson		State: MS	Zip: 39202	
Site Location: b/t North and Jefferson St <a href="#">See Reports</a>			Tel: 6014474654	
Building Size: 20,000		# of Floors: 2	Age in Years: 40	
Present Use: unoccupied		Prior Use: government office		
IV. FACILITY INFORMATION (Identify owner, asbestos removal contractor, and other operator)				
OWNER NAME: State of MS- Bureau of Buildings				
Address: 501 N West St Suite 1401B,				
City: Jackson		State: MS	Zip: 39202	
Contact: office of capitol facilities			Tel: 601) 359-3621	
ASBESTOS REMOVAL CONTRACTOR: Pearson Environmental Services				
Address: 130 southpoint dr, ste J				
City: byram		State: ms	Zip: 39272	
Contact: chris pearson			Tel: 6019371186	
Certification Number: ABC=00005297			Expiration Date: Dec. 27th, 2024	
OTHER OPERATOR: Probity Contracting group				
Address: 809 N Church St				
City: florence		State: ms	Zip: 39073	
Contact: ken taylor			Tel: (601) 891-4100	
V. WAS SITE INSPECTED TO DETERMINE PRESENCE OF ASBESTOS? (Yes/No): yes				
WAS ASBESTOS PRESENT? (Yes/No): yes			Inspection Date: july 9th, 2020 & 8/26/24	
Inspector: Joe Drapala & Chris Pearson		Certification Number: ABI-00003042	Expiration Date: july 22nd 2020	
VI. SUSPECT MATERIALS SAMPLED AND PROCEDURES USED TO DETECT THE PRESENCE OF ASBESTOS MATERIAL: PLM analysis on bulk suspect materials; sheetrock/ joint compound; VCT ; perimeter wall texture; mastics/ cove bases; TSI in 2020. I (Chris Pearson {ABI-00002023}) sampled on 8/26/24, the roofing and exteriors, and composite sampling of the existing sheetrock to have analyzed as a composite sample, original inspection had only joint compound tested and analyzed.				
VII. QUANTITY OF RACM TO BE REMOVED: <a href="#">See reports and previous notification forms</a> Non-ACM removal with trace amounts of asbestos in sheetrock joint compound				
Pipes (LN FT): 0		Surface Area (SQ FT): 0	Volume of Facility Components (CU FT): NA	
VIII. QUANTITY OF NONFRIABLE ASBESTOS NOT REMOVED: NA				
Category I: NA			Category II: NA	
IX. SCHEDULED DATES ASBESTOS REMOVAL (MM/DD/YY) Start: 8/29/2024			Complete: 9/5/2024	
X. SCHEDULED DATES DEMO/RENOVATION (MM/DD/YY) Start: 9/6/2024			Complete: 10/6/2024	

**XI. DESCRIPTION OF PLANNED DEMOLITION OR RENOVATION WORK, AND METHOD(S) TO BE USED:**  
Excavator for selective demolition/ renovation work; build out of interior/ exterior spaces

**XII. DESCRIPTION OF WORK PRACTICES AND ENGINEERING CONTROLS TO BE USED TO PREVENT EMISSIONS OF ASBESTOS AT THE DEMOLITION OR RENOVATION SITE:**  
abatement of NON-ACM(<1%) under containment; wet method removal with amended water; HEPA air scrubbers for negativer pressure; debris bagged for disposal.

**XIII. WASTE TRANSPORTER #1**

Name: Pearson Environmental  
Address: 130 southpointe dr, ste J  
City: byram State: ms Zip: 39272  
Contact Person: chris pearson Tel: 6019371186

**WASTE TRANSPORTER #2**

Name:  
Address:  
City: State: Zip:  
Contact Person: Tel:

**XIV. WASTE DISPOSAL SITE**

Name: little dixie  
Address: 1716 w. county line rd  
City: ridgeland State: ms Zip: 39157  
Contact Person: mike raley Tel: (601) 982-9488

**XV. IF DEMOLITION ORDERED BY A GOVERNMENT AGENCY, PLEASE IDENTIFY THE AGENCY BELOW:**


Name: Title:  
Authority:  
Date of Order (MM/DD/YY): Date Ordered to Begin (MM/DD/YY):

**XVI. FOR EMERGENCY RENOVATIONS:**

Date and Hour of Emergency (MM/DD/YY):  
Description of the sudden unexpected event:  
Explanation of how the event caused unsafe conditions or would cause equipment damage or an unreasonable financial burden:

**XVII. DESCRIPTION OF PROCEDURES TO BE FOLLOWED IN THE EVENT THAT UNEXPECTED ASBESTOS IS FOUND OR PREVIOUSLY NONFRIABLE ASBESTOS MATERIAL BECOMES CRUMBLER, PULVERIZED, OR REDUCED TO POWDER:**  
contain materials; add amended water via airless sprayer; additional monitoring with additional containment measures

**XVIII. I CERTIFY THAT AN INDIVIDUAL TRAINED IN THE PROVISIONS OF THIS REGULATION (40 CFR PART 61, SUBPART M) WILL BE ONSITE DURING THE DEMOLITION OR RENOVATION, AND EVIDENCE THAT THE REQUIRED TRAINING HAS BEEN ACCOMPLISHED BY THIS PERSON WILL BE AVAILABLE FOR INSPECTION DURING NORMAL BUSINESS HOURS.**

chris pearson  
Type or Print Name  
  
(Signature of Owner/Operator)  
8-27-24  
(Date)

**XIX. I CERTIFY THAT THE ABOVE INFORMATION IS CORRECT:**

chris pearson  
Type or Print Name  
  
(Signature of Owner/Operator)  
8-27-24  
(Date)



**A REPORT FOR A NESHAP SURVEY  
FOR  
ASBESTOS-CONTAINING MATERIALS**

**OF THE  
STATE OF MISSISSIPPI OFFICE BUILDING  
660 NORTH STREET  
JACKSON, MISSISSIPPI**

Requested by:

**ALBERT AND ROBINSON ARCHITECTS PLLC  
514 MAIN STREET  
HATTIESBURG, MS 39401**

For

**MS DEPARTMENT OF FINANCE AND ADMINISTRATION  
501 NORTH WEST STREET, #1201a  
Jackson, Mississippi**

Prepared on:

August 4, 2020

**SEMS Project #1326-0001.1**

Prepared by:  
Joseph M. Drapala, CIH, CHMM, CIEC  
Industrial Hygiene Manager

	160 Upton Drive Jackson, MS 39209		601.922.0766		info@semsinc.net www.semsinc.net
---	--------------------------------------	---	--------------	---	-------------------------------------

**A REPORT FOR A NESHAP SURVEY  
FOR  
ASBESTOS-CONTAINING MATERIALS**

**OF THE**

**STATE OF MISSISSIPPI OFFICE BUILDING  
660 NORTH STREET  
JACKSON, MISSISSIPPI**

**Requested by:**

**ALBERT AND ROBINSON ARCHITECTS PLLC  
514 MAIN STREET  
HATTIESBURG, MS 39401**

**For**

**MISSISSIPPI DEPARTMENT OF FINANCE AND ADMINISTRATION  
501 NORTH WEST STREET, #1201a  
Jackson, Mississippi**

Prepared by:



**Southern Environmental Management & Specialties, Inc.**  
160 Upton Drive  
Jackson, Mississippi 39236-6485  
(601) 922-0766

**SEMS, Inc. Report No. 1326-0001.1  
August 2020**

## TABLE OF CONTENTS

	<u>Page</u>
<b>EXECUTIVE SUMMARY .....</b>	<b>ii</b>
<b>1.0 PURPOSE AND SCOPE OF SERVICES.....</b>	<b>1</b>
<b>2.0 SITE DESCRIPTION .....</b>	<b>2</b>
<b>3.0 DISCUSSION OF SAMPLING RESULTS.....</b>	<b>3</b>
3.1 Asbestos-Containing Materials: Friable .....	4
3.2 Asbestos-Containing Materials: Non-Friable.....	4
3.3 Non-Asbestos-Containing Materials .....	6
<b>4.0 SUMMARY OF RECOMMENDATIONS.....</b>	<b>12</b>
<b>5.0 QUALIFYING STATEMENT.....</b>	<b>13</b>

### APPENDICES:

- Appendix A: Professional Credentials
- Appendix B: Laboratory Analytical Results, Bulk Asbestos Report
- Appendix C: Schematic Floor Plan: ACM Location

## EXECUTIVE SUMMARY

**Southern Environmental Management and Specialties, Inc. (SEMS)** was retained by Albert and Robinson Architects PLLC, Hattiesburg, Mississippi, on behalf of the Mississippi Department of Finance and Administration, Jackson, Mississippi, to conduct a facility survey to identify and sample suspected Asbestos-Containing Materials (ACM) at the State of Mississippi Office Building at 660 North Street, Jackson, Mississippi.

**SEMS** collected forty-six (46) multi-layer and singular bulk samples on July 9, 2020 of suspect asbestos-containing materials (ACM) from the interior areas of the building. The samples were collected by Joseph M. Drapala, CIH, Inspector I.D. number ABI-00003042, expiration date July 22, 2020. The samples were submitted to EMSL Analytical, Inc., Baton Rouge, Louisiana, for analysis by Polarized Light Microscopy (PLM). The laboratory is accredited under National Voluntary Laboratory Accreditation Program ID Number 200375-0.

### Summary of Findings

The following summary of findings is based on the results from the laboratory analysis and field investigation:

## **Asbestos**

1. **SEMS** presents the following table, summarizing the results of the asbestos-containing materials (ACM) survey:

<b>Sample #</b>	<b>Material</b>	<b>Location (Sample Point)</b>	<b>Asbestos Present</b>
AR-660-0001	Wood Grain Patterned Flooring	Suite 100C Hall	NAD
AR-660-0002	Wood Grain Patterned Flooring	Suite 100C Hall	NAD
AR-660-0003	Base Cove and Mastic	Suite 100C Breakroom	NAD
AR-660-0004	12" Tan Floor Tile	Suite 100C Breakroom	NAD
AR-660-0005	12" Tan Floor Tile	Suite 100C Men's Restroom	NAD
AR-660-0006	12" Brown Floor Tile	Suite 100C Men's Restroom	NAD
AR-660-0007	Drywall Mud	Suite 100C Breakroom	NAD

<b>Sample #</b>	<b>Material</b>	<b>Location (Sample Point)</b>	<b>Asbestos Present</b>
AR-660-0008	Drywall Mud	Suite 100C Men's Restroom	2% Chrysotile
AR-660-0009	Perimeter Wall Texture Finish	Suite 100C Hall	NAD
AR-660-0010	Perimeter Wall Texture Finish	Suite 100C Conference Room #1	NAD
AR-660-0011	Drywall Mud	Suite 100C Hall	2% Chrysotile
AR-660-0012	2'x2' Ceiling Panel	Suite 100C Hall	NAD
AR-660-0013	HVAC Duct Mastic	Suite 100C Hall	NAD
AR-660-0014	HVAC Duct Mastic	Suite 100C Hall	NAD
AR-660-0015	12" Sand Patterned Floor Tile	Suite 100B Multi-use Restroom	NAD



<b>Sample #</b>	<b>Material</b>	<b>Location (Sample Point)</b>	<b>Asbestos Present</b>
AR-660-0016	12" Sand Patterned Floor Tile	Suite 100B Multi-use Restroom	NAD
AR-660-0017	Base Cove and Mastic	Suite 100B Multi-use Restroom	NAD
AR-660-0018	2'x2' Ceiling Panel	Suite 100B Throughout	NAD
AR-660-0019	Drywall Mud	Suite 104 Reception Desk	NAD
AR-660-0020	12" Tan Floor Tile	Suite 104 Breakroom	NAD
AR-660-0021	12" Tan Floor Tile	Suite 104 Ladies Restroom	NAD
AR-660-0022	12" Off-White Floor Tile	Suite 104 Men's Restroom	NAD
AR-660-0023	12" Off-White Floor Tile	Suite 104 Men's Restroom	NAD

<b>Sample #</b>	<b>Material</b>	<b>Location (Sample Point)</b>	<b>Asbestos Present</b>
AR-660-0024	Pipe Joint TSI (old)	Suite 104 Hall	NAD
AR-660-0025	Pipe Insulation with joint compound	Suite 104 Hall	NAD
AR-660-0026	2'x2' Ceiling Panel	Suite 104 Hall	NAD
AR-660-0027	12" Sand Patterned Floor Tile	State Parole Board Suite Men's Restroom	NAD
AR-660-0028	12" Sand Patterned Floor Tile	State Parole Board Suite Men's Restroom	NAD
AR-660-0029	12" Gray Floor Tile	State Parole Board Suite Breakroom	NAD
AR-660-0030	12" Gray Floor Tile	State Parole Board Suite Flower's Office	NAD
AR-660-0031	Pipe Joint TSI (old)	State Parole Board Suite Hall at Breakroom	NAD

<b>Sample #</b>	<b>Material</b>	<b>Location (Sample Point)</b>	<b>Asbestos Present</b>
AR-660-0032	Pipe Joint TSI (old)	State Parole Board Suite Hall at Breakroom	NAD
AR-660-0033	Drywall Mud	State Parole Board Suite Hall at Breakroom	2% Chrysotile
AR-660-0034	2'x2' Ceiling Panel	State Parole Board Suite Hall at Breakroom	NAD
AR-660-0035	Perimeter Wall Texture Finish	Suite 102C Bench Test Room	NAD
AR-660-0036	Drywall Mud	Suite 102C Hall	NAD
AR-660-0037	12" Brown Floor Tile	Suite 300 Breakroom	NAD
AR-660-0038	12" Sand Patterned Floor Tile	Suite 300 Breakroom	NAD
AR-660-0039	Drywall Mud	Suite 300 Storage	NAD

<b>Sample #</b>	<b>Material</b>	<b>Location (Sample Point)</b>	<b>Asbestos Present</b>
AR-660-0040	Base Cove and Mastic	Suite 300 Storage	NAD
AR-660-0041	2'x2' Ceiling Panel	Suite 400 Hall	NAD
AR-660-0042	Drywall Mud	Suite 400 Hall	NAD
AR-660-0043	Drywall Mud	Suite 400 Hall	NAD
AR-660-0044	12" Sand Patterned Floor Tile	VA Suite Breakroom	NAD
AR-660-0045	Drywall Mud	VA Suite Storage	NAD
AR-660-0046	Base Cove and Mastic	VA Suite Storage	NAD

NAD = No Asbestos Detected

See Appendix B, Laboratory Analytical Results, Bulk Asbestos Report.

There was no floor tile found under the carpets on the second floor.

### **Inspection Report Limitations**

**This inspection report shall not be used as a substitute for asbestos abatement specifications, and are not to be used in formal bid documents as a specification. A specific Division for Asbestos Abatement should accompany this inspection report in formal bid documentation.**

### **Summary of Recommendations:**

The following recommendation is made concerning the building materials located at the State of Mississippi Office Building, 660 North Street, Jackson, Mississippi.

1. **SEMS** recommends that at least ten (10) days prior to demolition or renovation a "Demolition/Renovation Notification Form" as referenced in 40 CFR Part 61, Subpart M, be submitted to Mississippi Department of Environmental Quality (MDEQ). Asbestos abatement should be designed by a Mississippi Certified Asbestos Designer and conducted by a Mississippi Certified Asbestos Contractor.

## 1.0 PURPOSE AND SCOPE OF SERVICES

**Southern Environmental Management & Specialties, Inc. (SEMS)** was retained by Albert and Robinson Architects PLLC, Hattiesburg, Mississippi, on behalf of the Mississippi Department of Finance and Administration, Jackson, Mississippi, to conduct a facility survey to identify and sample suspected Asbestos-Containing Materials (ACM) at the State of Mississippi Office Building, 660 North Street, Jackson, Mississippi.

Specifically, the scope of services rendered included the following:

### Scope of Work:

1. Conduct an inspection of the building interior spaces to survey, identify and sample a statistically valid number of suspect asbestos-containing building materials within the designated project area. Additionally, perform a visual investigation to determine the existing condition of building materials.
2. Conduct analysis on all samples of materials suspected to contain asbestos by utilizing Polarized Light Microscopy (PLM) with dispersion staining techniques performed in accordance with the Environmental Protection Agency (EPA) bulk analysis protocol utilizing EPA Method 600/M4-82-020.
3. Review all field, survey, and analytical data to provide a comprehensive facility assessment.
4. Prepare a final report with observations and recommendations relating to the facilities' conditions identified.

## 2.0 SITE DESCRIPTION

**SEMS**, under the direction of the Albert and Robinson Architects PLLC, Hattiesburg, Mississippi, on behalf of the Mississippi Department of Finance and Administration, Jackson, Mississippi conducted a site investigation on July 9, 2020, to identify and sample suspected Asbestos-Containing Materials (ACM), located at 660 North Street, Jackson, Mississippi. The inspection was conducted by Joseph M. Drapala, CIH, CHMM, CIEC, Asbestos Inspector I.D. number ABI-00003042, expiration date July 22, 2020. The suspect ACM samples were submitted to EMSL Analytical, Inc., Baton Rouge, Louisiana, for analysis by PLM.

### 3.0 DISCUSSION OF SAMPLING RESULTS

SEMS conducted materials sampling at 660 North Street, Jackson, Mississippi in accordance with the proposed scope of services. The following suspect materials sampled were analyzed for asbestos.

#### Surfacing Materials

- Interior Surface Coating

#### Thermal System Insulation

- Pipe Insulation (Glass Fiber)
- Pipe Joint
- HVAC Insulation Sealing Mastic

#### Miscellaneous

- Floor Tiles and Mastic
- Base Cove Mastic
- Drywall systems
- Ceiling Panels

A total of forty-six (46) multi-layer and singular bulk samples of suspect ACM were collected.

#### 3.1 Asbestos-Containing Materials: Friable

No Friable asbestos-containing materials were identified during this survey.



### 3.2 Asbestos-Containing Materials: Non-Friable

Non-Friable asbestos-containing materials were found or sampled during this survey and are presented in the following table.

Sample Number	Sample Description	Location	NESHAP Category	Type of Asbestos	Percent (%) Asbestos	OSHA Removal Class
AR-660-0008	Drywall Mud	Suite 100C Men's Restroom	Category with RACM Potential	Chrysotile	2	2
AR-660-0011	Drywall Mud	Suite 100C Hall	Category with RACM Potential	Chrysotile	2	2
AR-660-0033	Drywall Mud	State Parole Board Suite Hall at Breakroom	Category with RACM Potential	Chrysotile	2	2

#### National Emission Standards for Hazardous Air Pollutants (NESHAP) Material Categories

include:

- A. Regulated Asbestos-Containing Materials (RACM)
  - 1. Friable ACM
  - 2. Non-friable ACM that is or can/will become friable during renovation/demolition activity.
- B. Category 1 Non-friable ACM (Roofing, flooring, mastics, gaskets etc.)
- C. Category 2 Non-friable ACM (Asbestos cement products)

OSHA Removal Classes include:

- A. Class 1
  - 1. Removal of surfacing material, thermal system insulation (TSI), PACM
  - 2. Four (4)-day worker, five (5)-day supervisor training and state certification

B. Class 2

1. Activities involving the removal of ACM which is not thermal system insulation (TSI) or surfacing material. This includes, but is not limited to, the removal of asbestos-containing wallboard, floor tile and sheeting, roofing and siding shingles, and construction mastics.
2. Four (4)-day worker, five (5)-day supervisor training and state certification

C. Class 3

1. Repair and maintenance operations, where "ACM", including TSI and surfacing ACM and PACM, is likely to be disturbed.
2. Sixteen (16)-hour worker training

D. Class 4

1. Maintenance and custodial activities during which employees contact but do not disturb ACM or PACM and activities to clean up dust, waste and debris resulting from Class I, II, and III activities.

All analytical reports are presented in the Appendices.

### 3.3 Non-Asbestos-Containing Materials

The following table contains the laboratory results for suspect ACM that was sampled and determined to be non-ACM by PLM during this investigation:

#### Non-Asbestos-Containing Materials

Sample #	Material	Location (Sample Point)	Asbestos Present
AR-660-0001	Wood Grain Patterned Flooring	Suite 100C Hall	NAD
AR-660-0002	Wood Grain Patterned Flooring	Suite 100C Hall	NAD
AR-660-0003	Base Cove and Mastic	Suite 100C Breakroom	NAD
AR-660-0004	12" Tan Floor Tile	Suite 100C Breakroom	NAD
AR-660-0005	12" Tan Floor Tile	Suite 100C Men's Restroom	NAD
AR-660-0006	12" Brown Floor Tile	Suite 100C Men's Restroom	NAD

Sample #	Material	Location (Sample Point)	Asbestos Present
AR-660-0007	Drywall Mud	Suite 100C Breakroom	NAD
AR-660-0009	Perimeter Wall Texture Finish	Suite 100C Hall	NAD
AR-660-0010	Perimeter Wall Texture Finish	Suite 100C Conference Room #1	NAD
AR-660-0012	2'x2' Ceiling Panel	Suite 100C Hall	NAD
AR-660-0013	HVAC Duct Mastic	Suite 100C Hall	NAD
AR-660-0014	HVAC Duct Mastic	Suite 100C Hall	NAD
AR-660-0015	12" Sand Patterned Floor Tile	Suite 100B Multi-use Restroom	NAD
AR-660-0016	12" Sand Patterned Floor Tile	Suite 100B Multi-use Restroom	NAD

Sample #	Material	Location (Sample Point)	Asbestos Present
AR-660-0017	Base Cove and Mastic	Suite 100B Multi-use Restroom	NAD
AR-660-0018	2'x2' Ceiling Panel	Suite 100B Throughout	NAD
AR-660-0019	Drywall Mud	Suite 104 Reception Desk	NAD
AR-660-0020	12" Tan Floor Tile	Suite 104 Breakroom	NAD
AR-660-0021	12" Tan Floor Tile	Suite 104 Ladies Restroom	NAD
AR-660-0022	12" Off-White Floor Tile	Suite 104 Men's Restroom	NAD
AR-660-0023	12" Off-White Floor Tile	Suite 104 Men's Restroom	NAD
AR-660-0024	Pipe Joint TSI (old)	Suite 104 Hall	NAD

Sample #	Material	Location (Sample Point)	Asbestos Present
AR-660-0025	Pipe Insulation with joint compound	Suite 104 Hall	NAD
AR-660-0026	2'x2' Ceiling Panel	Suite 104 Hall	NAD
AR-660-0027	12" Sand Patterned Floor Tile	State Parole Board Suite Men's Restroom	NAD
AR-660-0028	12" Sand Patterned Floor Tile	State Parole Board Suite Men's Restroom	NAD
AR-660-0029	12" Gray Floor Tile	State Parole Board Suite Breakroom	NAD
AR-660-0030	12" Gray Floor Tile	State Parole Board Suite Flower's Office	NAD
AR-660-0031	Pipe Joint TSI (old)	State Parole Board Suite Hall at Breakroom	NAD
AR-660-0032	Pipe Joint TSI (old)	State Parole Board Suite Hall at Breakroom	NAD

Sample #	Material	Location (Sample Point)	Asbestos Present
AR-660-0034	2'x2' Ceiling Panel	State Parole Board Suite Hall at Breakroom	NAD
AR-660-0035	Perimeter Wall Texture Finish	Suite 102C Bench Test Room	NAD
AR-660-0036	Drywall Mud	Suite 102C Hall	NAD
AR-660-0037	12" Brown Floor Tile	Suite 300 Breakroom	NAD
AR-660-0038	12" Sand Patterned Floor Tile	Suite 300 Breakroom	NAD
AR-660-0039	Drywall Mud	Suite 300 Storage	NAD
AR-660-0040	Base Cove and Mastic	Suite 300 Storage	NAD
AR-660-0041	2'x2' Ceiling Panel	Suite 400 Hall	NAD

Sample #	Material	Location (Sample Point)	Asbestos Present
AR-660-0042	Drywall Mud	Suite 400 Hall	NAD
AR-660-0043	Drywall Mud	Suite 400 Hall	NAD
AR-660-0044	12" Sand Patterned Floor Tile	VA Suite Breakroom	NAD
AR-660-0045	Drywall Mud	VA Suite Storage	NAD
AR-660-0046	Base Cove and Mastic	VA Suite Storage	NAD

NAD = No Asbestos Detected

There was no floor tile found under the carpets on the second floor.

All analytical reports are presented in the Appendices. All materials were analyzed by PLM. According to the Environmental Protection Agency (EPA) and Occupational Safety and Health Administration (OSHA) regulations, any material containing greater than one percent (>1%) asbestos is considered ACM.



#### 4.0 SUMMARY OF RECOMMENDATIONS

The following recommendation is made concerning the building materials located in the interior of 660 North Street, Jackson, Mississippi.

1. A ten (10) day "Demolition/Renovation Notification Form" as referenced in 40 CFR Part 61, Subpart M, is not required to be submitted to Mississippi Department of Environmental Quality (MDEQ) due to no detection of asbestos in the samples that were collected and no-load bearing structure will be demolished.

## 5.0 QUALIFYING STATEMENT

**SEMS** has prepared this report for the exclusive use of the client. The report and its analytical results, findings, conclusions, and recommendations either in part or in its entirety are not to be used or relied on by any other party without prior consent by **SEMS, the Client or assigns**. The report format is proprietary to **SEMS**, having been designed, developed, and prepared by **SEMS** at great expense and the information is secret, confidential, unique, and constitutes the exclusive property of **SEMS** and shall not be used by any third party without the prior written consent of **SEMS**. Any use thereof, other than the sole benefit of **SEMS** or the client, shall be deemed wrongful and will cause irreparable injury to **SEMS**.

**SEMS** presents the findings, conclusions and recommendations, therein, which are based solely on the conditions observed during the inspection and analytical results. The client should be aware that methodologies, results, conclusions, recommendations, and any remediation protocol to be written are based partially upon decisions made by the client concerning the extent of project work to be conducted, and are the results of a limited sampling program conducted on a specific date(s). A different sampling program or samples taken at another time may have resulted in different conclusions, recommendations, and protocols. Additionally, **SEMS** does not make any representation or projection as to past conditions or future exposures and does not extend its findings to areas outside of the statistical representation of the completed investigation.

**APPENDIX A**  
**PROFESSIONAL CREDENTIALS**

## PROFESSIONAL RESUME

**NAME:** Joseph M. Drapala, CIH, CHMM, CIEC

**TITLE:** Industrial Hygiene Manager

**EDUCATION:** B.S. – Mechanical Engineering  
Mississippi State University

**SPECIALIZED TRAINING:** OSHA 40-Hour Health and Safety  
OSHA 40-Hour Hazardous Waste Operations and Emergency Response  
EPA/AHERA Asbestos Inspector (Mississippi)  
EPA/AHERA Asbestos Management Planning (Mississippi)  
EPA/AHERA Asbestos Project Design (Mississippi)  
Fundamentals of Dispersion Modeling  
Indoor Air Quality / Bio-Aerosols  
OSHA 10 and 30-Hour General Industry Outreach Program  
Radiation Safety  
Comprehensive Industrial Hygiene Review  
Quantitative Industrial Hygiene  
Basic Hazardous Material Transportation Training  
AHIA Management Certification Program  
Infectious Diseases and the Role of the Industrial Hygienist in  
Preventing and Managing the Coming Epidemic  
Roles of OEHS Professionals in Pandemic and Avian Influenza  
AIHce 2009 Media Training Workshop

**CERTIFICATIONS:** American Board of Industrial Hygiene, Certified Industrial Hygienist (No. 9068CP)  
Certified Hazardous Material Manager (No. 5181)  
Council-Certified Indoor Environmental Consultant (No. 0512009)  
Council-Certified Microbial Consultant (No. 0708038)  
Mississippi Certified Asbestos Inspector  
Mississippi Certified Project Designer  
Mississippi Certified Management Planner  
Mississippi Certified Lead Inspector

**AFFILIATIONS:** American Industrial Hygiene Association (Full Member)  
Academy of Industrial Hygiene (Diplomat)  
American Council for Accreditation Certification (Certification Board)  
Institute of Certified Hazardous Materials Managers

## PROFESSIONAL RESUME (Continued)

**Joseph M. Drapala, CIH, CHMM, CIEC, CMC**, is a Certified Industrial Hygienist (CIH), Certified Hazardous Materials Manager (CHMM), Certified Indoor Environmental Consultant (CIEC) and a Certified Microbial Consultant (CMC). Mr. Drapala has over 26 years of experience in environmental health and safety consulting. This includes compliance and permitting for federal and state environmental regulations, conducting employee exposure assessments regarding OSHA employee safety regulations, emergency response and indoor air quality investigations, remediation and renovation designs concerning asbestos, lead paint, hazardous materials and biological contamination. He has conducted investigations for federal, state, and local governmental agencies, institutions of higher learning, and private concerns, as well as AHERA Inspections and planning management for various school districts throughout the Southeast. Mr. Drapala has developed training materials and presented Industrial Hygiene and Indoor Air Quality seminars for various professional industries, such as insurance adjusters, real estate brokers and appraisers, and professional engineers. Additionally, Mr. Drapala provides expert witness and assistance for trial preparation to attorneys involving indoor air quality (IAQ) and industrial hygiene (IH) litigation. He has written articles and materials for IAQ education seminars with emphasis on molds and bioaerosol exposures.

Mr. Drapala currently serves as a Certification Board Member for the American Council for Accreditation Certification (formerly the American Indoor Air Quality Council).

### **SELECTED PROJECT EXPERIENCE:**

**PROJECT MANAGER:** Development and Implementation of an Asbestos Abatement of Residential Quarters, Veterans Administration Medical Center, Mississippi. Designed specifications and provided project management to abate asbestos materials for the interior and exterior of seven (7) residential quarters. Abatement included contaminated soil, thermal system insulation, and surfacing materials.

**PROJECT DESIGNER:** Asbestos Abatement Specifications for Asbestos-Containing Materials, Various Federal, State, and Local Clients, Mississippi. Responsibilities involved developing project specifications and drawings for the abatement of asbestos-containing materials (ACM) from each site. Duties also included pre-qualifications review of contractors, supervision of abatement projects, industrial hygiene monitoring of air quality before, during, and after abatement work.

**PROJECT MANAGER:** Asbestos Surveys, Abatement Design and Construction Supervision, United States Postal Service, Mississippi, Louisiana, Arkansas, and Texas. Abatement design included specifications of replacement material in abatement area. Conducted quality control air monitoring. Work was conducted in occupied facilities while maintaining full Postal Service operations.

# *State of Mississippi*

*Department of Environmental Quality  
Office of Pollution Control*

## *Certificate of Licensure*

In accordance with the Asbestos Abatement Accreditation and Certification Act,  
Enacted as 1989 Mississippi Law, Chapter 505

Be it known that

*Joseph Drapala*

Having submitted acceptable evidence of qualifications and  
training and other appropriate information, is hereby granted this

*Asbestos Inspector  
Certification*

*Certificate No.: ABI-00003042  
Expiration Date: July 22nd, 2020  
Training Expires on July 22nd, 2020*

*Margaret Hession*  
for Chief, Air Division

40701 LIC20190001

**APPENDIX B**

**LABORATORY ANALYTICAL RESULTS, BULK ASBESTOS REPORTS**



# EMSL Analytical, Inc.

18369 Petroleum Drive Baton Rouge, LA 70809

Tel/Fax: (225) 755-1920 / (225) 755-1989

http://www.EMSL.com / batonrougelab@emsl.com

EMSL Order: 252003269

Customer ID: SEMS50

Customer PO: 1326-0001

Project ID:

**Attention:** Joseph Drapala  
SEMS, Inc.  
11628 S. Choctaw Drive  
Baton Rouge, LA 70815

**Phone:** (225) 337-0402

**Fax:**

**Received Date:** 07/14/2020 9:55 AM

**Analysis Date:** 07/17/2020 - 07/18/2020

**Collected Date:** 07/09/2020

**Project:** 1326-0001

## Test Report: Asbestos Analysis of Bulk Materials via EPA 600/R-93/116 Method using Polarized Light Microscopy

Sample	Description	Appearance	Non-Asbestos		Asbestos % Type
			% Fibrous	% Non-Fibrous	
AR-660-0001-Flooring <i>252003269-0001</i>	Wood Grain Patterned Flooring	Brown/Black Non-Fibrous Homogeneous		100% Non-fibrous (Other)	None Detected
AR-660-0001-Mastic <i>252003269-0001A</i>	Wood Grain Patterned Flooring	Clear Non-Fibrous Homogeneous		100% Non-fibrous (Other)	None Detected
AR-660-0001-Leveler <i>252003269-0001B</i>	Wood Grain Patterned Flooring	Gray Non-Fibrous Homogeneous		100% Non-fibrous (Other)	None Detected
AR-660-0001-Mastic 2 <i>252003269-0001C</i>	Wood Grain Patterned Flooring	Yellow Non-Fibrous Homogeneous		100% Non-fibrous (Other)	None Detected
AR-660-0002-Flooring <i>252003269-0002</i>	Wood Grain Patterned Flooring	Brown/Black Non-Fibrous Homogeneous		100% Non-fibrous (Other)	None Detected
AR-660-0002-Mastic <i>252003269-0002A</i>	Wood Grain Patterned Flooring	Clear Non-Fibrous Homogeneous		100% Non-fibrous (Other)	None Detected
AR-660-0002-Leveler <i>252003269-0002B</i>	Wood Grain Patterned Flooring	Gray Non-Fibrous Homogeneous		100% Non-fibrous (Other)	None Detected
AR-660-0002-Mastic 2 <i>252003269-0002C</i>	Wood Grain Patterned Flooring	Yellow Non-Fibrous Homogeneous		100% Non-fibrous (Other)	None Detected
AR-660-0003-Base Cove <i>252003269-0003</i>	Base Cove & Mastic	Black Non-Fibrous Homogeneous		100% Non-fibrous (Other)	None Detected
AR-660-0003-Mastic <i>252003269-0003A</i>	Base Cove & Mastic	Yellow Non-Fibrous Homogeneous		100% Non-fibrous (Other)	None Detected
AR-660-0004-Floor Tile <i>252003269-0004</i>	12" Tan Floor Tile	Tan Non-Fibrous Homogeneous		100% Non-fibrous (Other)	None Detected
AR-660-0004-Mastic <i>252003269-0004A</i>	12" Tan Floor Tile	Yellow Non-Fibrous Homogeneous		100% Non-fibrous (Other)	None Detected
AR-660-0005-Floor Tile <i>252003269-0005</i>	12" Tan Floor Tile	Tan Non-Fibrous Homogeneous		100% Non-fibrous (Other)	None Detected
AR-660-0005-Mastic <i>252003269-0005A</i>	12" Tan Floor Tile	Yellow Non-Fibrous Homogeneous		100% Non-fibrous (Other)	None Detected
AR-660-0006-Floor Tile <i>252003269-0006</i>	12" Brown Floor Tile	Brown Non-Fibrous Homogeneous		100% Non-fibrous (Other)	None Detected
AR-660-0006-Mastic <i>252003269-0006A</i>	12" Brown Floor Tile	Yellow Non-Fibrous Homogeneous		100% Non-fibrous (Other)	None Detected

Initial report from: 07/19/2020 13:32:42





# EMSL Analytical, Inc.

18369 Petroleum Drive Baton Rouge, LA 70809

Tel/Fax: (225) 755-1920 / (225) 755-1989

http://www.EMSL.com / batonrougelab@emsl.com

**EMSL Order:** 252003269  
**Customer ID:** SEMS50  
**Customer PO:** 1326-0001  
**Project ID:**

## Test Report: Asbestos Analysis of Bulk Materials via EPA 600/R-93/116 Method using Polarized Light Microscopy

Sample	Description	Appearance	Non-Asbestos		Asbestos % Type
			% Fibrous	% Non-Fibrous	
AR-660-0007 <small>252003269-0007</small>	Drywall Mud	White Non-Fibrous Homogeneous		100% Non-fibrous (Other)	None Detected
AR-660-0008 <small>252003269-0008</small>	Drywall Mud	White Non-Fibrous Homogeneous		98% Non-fibrous (Other)	2% Chrysotile
AR-660-0009-Texture <small>252003269-0009</small>	Perimeter Wall Texture Finish	White Non-Fibrous Homogeneous		100% Non-fibrous (Other)	None Detected
AR-660-0009-Base Coat <small>252003269-0009A</small>	Perimeter Wall Texture Finish	Gray Non-Fibrous Homogeneous		100% Non-fibrous (Other)	None Detected
AR-660-0010-Texture <small>252003269-0010</small>	Perimeter Wall Texture Finish	White Non-Fibrous Homogeneous		100% Non-fibrous (Other)	None Detected
AR-660-0010-Base Coat <small>252003269-0010A</small>	Perimeter Wall Texture Finish	Gray Non-Fibrous Homogeneous		100% Non-fibrous (Other)	None Detected
AR-660-0011 <small>252003269-0011</small>	Drywall Mud	White Non-Fibrous Homogeneous		98% Non-fibrous (Other)	2% Chrysotile
AR-660-0012 <small>252003269-0012</small>	2'x2' Ceiling Panel	Gray/White Fibrous Homogeneous	80% Cellulose 10% Min. Wool	10% Non-fibrous (Other)	None Detected
AR-660-0013 <small>252003269-0013</small>	HVAC Duct Mastic	Gray Non-Fibrous Homogeneous		100% Non-fibrous (Other)	None Detected
AR-660-0014 <small>252003269-0014</small>	HVAC Duct Mastic	Gray Non-Fibrous Homogeneous		100% Non-fibrous (Other)	None Detected
AR-660-0015-Floor Tile <small>252003269-0015</small>	12" Sand Patterned Floor Tile	Tan Non-Fibrous Homogeneous		100% Non-fibrous (Other)	None Detected
AR-660-0015-Mastic <small>252003269-0015A</small>	12" Sand Patterned Floor Tile	Yellow Non-Fibrous Homogeneous		100% Non-fibrous (Other)	None Detected
AR-660-0016-Floor Tile <small>252003269-0016</small>	12" Sand Patterned Floor Tile	Tan Non-Fibrous Homogeneous		100% Non-fibrous (Other)	None Detected
AR-660-0016-Mastic <small>252003269-0016A</small>	12" Sand Patterned Floor Tile	Yellow Non-Fibrous Homogeneous		100% Non-fibrous (Other)	None Detected
AR-660-0017-Base Cove <small>252003269-0017</small>	Base Cove & Mastic	Brown Non-Fibrous Homogeneous		100% Non-fibrous (Other)	None Detected
AR-660-0017-Mastic <small>252003269-0017A</small>	Base Cove & Mastic	Yellow Non-Fibrous Homogeneous		100% Non-fibrous (Other)	None Detected
AR-660-0018 <small>252003269-0018</small>	2'x2' Ceiling Panel	Gray/White Fibrous Homogeneous	80% Cellulose 5% Min. Wool	15% Non-fibrous (Other)	None Detected
AR-660-0019 <small>252003269-0019</small>	Drywall Mud	White Non-Fibrous Homogeneous		100% Non-fibrous (Other)	None Detected

Initial report from: 07/19/2020 13:32:42



**EMSL Analytical, Inc.**  
 18369 Petroleum Drive Baton Rouge, LA 70809  
 Tel/Fax: (225) 755-1920 / (225) 755-1989  
<http://www.EMSL.com/batonrougelab@emsl.com>

**EMSL Order:** 252003269  
**Customer ID:** SEMS50  
**Customer PO:** 1326-0001  
**Project ID:**

**Test Report: Asbestos Analysis of Bulk Materials via EPA 600/R-93/116 Method using Polarized Light Microscopy**

Sample	Description	Appearance	Non-Asbestos		Asbestos % Type
			% Fibrous	% Non-Fibrous	
AR-660-0020-Floor Tile <i>252003269-0020</i>	12" Tan Floor Tile	Tan Non-Fibrous Homogeneous		100% Non-fibrous (Other)	None Detected
AR-660-0020-Mastic <i>252003269-0020A</i>	12" Tan Floor Tile	Yellow Non-Fibrous Homogeneous		100% Non-fibrous (Other)	None Detected
AR-660-0020-Leveler <i>252003269-0020B</i>	12" Tan Floor Tile	White Non-Fibrous Homogeneous		100% Non-fibrous (Other)	None Detected
AR-660-0021-Floor Tile <i>252003269-0021</i>	12" Tan Floor Tile	Tan Non-Fibrous Homogeneous		100% Non-fibrous (Other)	None Detected
AR-660-0021-Mastic <i>252003269-0021A</i>	12" Tan Floor Tile	Yellow Non-Fibrous Homogeneous		100% Non-fibrous (Other)	None Detected
AR-660-0022-Floor Tile <i>252003269-0022</i>	12" Off-White Floor Tile	Tan Non-Fibrous Homogeneous		100% Non-fibrous (Other)	None Detected
AR-660-0022-Mastic <i>252003269-0022A</i>	12" Off-White Floor Tile	Yellow Non-Fibrous Homogeneous		100% Non-fibrous (Other)	None Detected
AR-660-0023-Floor Tile <i>252003269-0023</i>	12" Off-White Floor Tile	Tan Non-Fibrous Homogeneous		100% Non-fibrous (Other)	None Detected
AR-660-0023-Mastic <i>252003269-0023A</i>	12" Off-White Floor Tile	Yellow Non-Fibrous Homogeneous		100% Non-fibrous (Other)	None Detected
AR-660-0024 <i>252003269-0024</i>	Pipe Joint TSI (Old)	Gray/White Fibrous Homogeneous	30% Min. Wool	70% Non-fibrous (Other)	None Detected
AR-660-0025-Insulation <i>252003269-0025</i> <i>No joint compound present.</i>	Pipe Insulation w/Joint Compound	Yellow Fibrous Homogeneous	99% Glass	1% Non-fibrous (Other)	None Detected
AR-660-0025-Insulation 2 <i>252003269-0025A</i>	Pipe Insulation w/Joint Compound	Gray/White Fibrous Homogeneous	40% Min. Wool	60% Non-fibrous (Other)	None Detected
AR-660-0026 <i>252003269-0026</i>	2'x2' Ceiling Panel	Gray/White Fibrous Homogeneous	60% Cellulose 20% Min. Wool	20% Non-fibrous (Other)	None Detected
AR-660-0027-Floor Tile <i>252003269-0027</i>	12" Sand Patterned Floor Tile	Gray Non-Fibrous Homogeneous		100% Non-fibrous (Other)	None Detected
AR-660-0027-Mastic <i>252003269-0027A</i>	12" Sand Patterned Floor Tile	Yellow Non-Fibrous Homogeneous		100% Non-fibrous (Other)	None Detected
AR-660-0028 <i>252003269-0028</i> <i>Mastic not present.</i>	12" Sand Patterned Floor Tile	Gray Non-Fibrous Homogeneous		100% Non-fibrous (Other)	None Detected
AR-660-0029 <i>252003269-0029</i>	12" Gray Floor Tile	Gray Non-Fibrous Homogeneous		100% Non-fibrous (Other)	None Detected
AR-660-0030 <i>252003269-0030</i>	12" Gray Floor Tile	Gray Non-Fibrous Homogeneous		100% Non-fibrous (Other)	None Detected

Initial report from: 07/19/2020 13:32:42



# EMSL Analytical, Inc.

18369 Petroleum Drive Baton Rouge, LA 70809

Tel/Fax: (225) 755-1920 / (225) 755-1989

<http://www.EMSL.com> / [batonrougelab@emsl.com](mailto:batonrougelab@emsl.com)

**EMSL Order:** 252003269  
**Customer ID:** SEMS50  
**Customer PO:** 1326-0001  
**Project ID:**

## Test Report: Asbestos Analysis of Bulk Materials via EPA 600/R-93/116 Method using Polarized Light Microscopy

Sample	Description	Appearance	Non-Asbestos		Asbestos
			% Fibrous	% Non-Fibrous	% Type
AR-660-0031 <i>252003269-0031</i>	Pipe Joint TSI (Old)	Gray/White Fibrous Homogeneous	10% Glass	90% Non-fibrous (Other)	None Detected
AR-660-0032 <i>252003269-0032</i>	Pipe Joint TSI (Old)	Gray Non-Fibrous Homogeneous	10% Glass	90% Non-fibrous (Other)	None Detected
AR-660-0033 <i>252003269-0033</i>	Drywall Mud	White Non-Fibrous Homogeneous		98% Non-fibrous (Other)	2% Chrysotile
AR-660-0034 <i>252003269-0034</i>	2'x2' Ceiling Panel	Gray/White Fibrous Homogeneous	70% Cellulose 20% Min. Wool	10% Non-fibrous (Other)	None Detected
AR-660-0035-Texture <i>252003269-0035</i>	Perimeter Wall Texture Finish	White Non-Fibrous Homogeneous		100% Non-fibrous (Other)	None Detected
AR-660-0035-Base Coat <i>252003269-0035A</i>	Perimeter Wall Texture Finish	Gray Non-Fibrous Homogeneous		100% Non-fibrous (Other)	None Detected
AR-660-0036 <i>252003269-0036</i>	Drywall Mud	White Non-Fibrous Homogeneous		100% Non-fibrous (Other)	None Detected
AR-660-0037 <i>252003269-0037</i>	12" Brown Floor Tile	Brown/Tan Non-Fibrous Homogeneous		100% Non-fibrous (Other)	None Detected
AR-660-0038 <i>252003269-0038</i>	12" Sand Patterned Floor Tile	Gray/Tan Non-Fibrous Homogeneous		100% Non-fibrous (Other)	None Detected
AR-660-0039 <i>252003269-0039</i>	Drywall Mud	White Non-Fibrous Homogeneous		100% Non-fibrous (Other)	None Detected
AR-660-0040 <i>252003269-0040</i> <i>No base cove present.</i>	Base Cove & Mastic	Yellow Non-Fibrous Homogeneous		100% Non-fibrous (Other)	None Detected
AR-660-0041 <i>252003269-0041</i>	2'x2' Ceiling Panel	Gray/White Fibrous Homogeneous	60% Cellulose 30% Min. Wool	10% Non-fibrous (Other)	None Detected
AR-660-0042 <i>252003269-0042</i>	Drywall Mud	White Non-Fibrous Homogeneous		100% Non-fibrous (Other)	None Detected
AR-660-0043 <i>252003269-0043</i>	Drywall Mud	White Non-Fibrous Homogeneous		100% Non-fibrous (Other)	None Detected
AR-660-0044-Floor Tile <i>252003269-0044</i>	12" Sand Patterned Floor Tile	Tan Non-Fibrous Homogeneous		100% Non-fibrous (Other)	None Detected
AR-660-0044-Mastic <i>252003269-0044A</i>	12" Sand Patterned Floor Tile	Yellow Non-Fibrous Homogeneous		100% Non-fibrous (Other)	None Detected
AR-660-0045-Mud <i>252003269-0045</i>	Drywall Mud	White Non-Fibrous Homogeneous		100% Non-fibrous (Other)	None Detected
AR-660-0045-Mastic <i>252003269-0045A</i>	Drywall Mud	Yellow Non-Fibrous Homogeneous		100% Non-fibrous (Other)	None Detected

Initial report from: 07/19/2020 13:32:42



**EMSL Analytical, Inc.**  
 18369 Petroleum Drive Baton Rouge, LA 70809  
 Tel/Fax: (225) 755-1920 / (225) 755-1989  
<http://www.EMSL.com> / [batonrougelab@emsl.com](mailto:batonrougelab@emsl.com)

**EMSL Order:** 252003269  
**Customer ID:** SEMS50  
**Customer PO:** 1326-0001  
**Project ID:**

**Test Report: Asbestos Analysis of Bulk Materials via EPA 600/R-93/116 Method using Polarized Light Microscopy**

Sample	Description	Appearance	Non-Asbestos		Asbestos
			% Fibrous	% Non-Fibrous	% Type
AR-660-0046-Cove Base <small>252003269-0046</small>	Base Cove & Mastic	Gray Non-Fibrous Homogeneous		100% Non-fibrous (Other)	None Detected
AR-660-0046-Mastic <small>252003269-0046A</small>	Base Cove & Mastic	Yellow Non-Fibrous Homogeneous		100% Non-fibrous (Other)	None Detected

Analyst(s)  
 Adam Gart (53)  
 Nicholas Montoya-Orozco (16)  
 Quynh Vu (3)

*Jamie Laginess*  
 Jamie Laginess, Laboratory Operations Manager  
 or Other Approved Signatory

EMSL maintains liability limited to cost of analysis. The above analyses were performed in general compliance with Appendix E to Subpart E of 40 CFR (previously EPA 600/M4-82-020 "Interim Method"), but augmented with procedures outlined in the 1993 ("final") version of the method. This report relates only to the samples reported above, and may not be reproduced, except in full, without written approval by EMSL. EMSL bears no responsibility for sample collection activities or analytical method limitations. Interpretation and use of test results are the responsibility of the client. All samples received in acceptable condition unless otherwise noted. This report must not be used by the client to claim product certification, approval, or endorsement by NVLAP, NIST or any agency of the federal government. EMSL recommends gravimetric reduction for all non-friable organically bound materials prior to analysis. Estimation of uncertainty is available on request.  
 Samples analyzed by EMSL Analytical, Inc. Cinnaminson, NJ NVLAP Lab Code 101048-0, AIHA-LAP, LLC-IHLAP Lab 100194, NYS ELAP 10872, NJ DEP 03036, PA ID# 68-00367, LA #04127

Initial report from: 07/19/2020 13:32:42



EMSL ANALYTICAL, INC.  
LABORATORY PRODUCTS TRAINING

### Asbestos Bulk Building Material Chain of Custody

EMSL Order Number (lab use only):

3269

EMSL Analytical, Inc.  
18369 Petroleum Drive

Baton Rouge, LA 70809  
Phone (225) 755-1920  
Fax (225) 755-1989

Company Name: SEMS Inc.		EMSL Customer ID: SEMS50	
Street: 160 Upton Drive		City: Jackson	State or Province: MS
Zip/Postal Code: 39209	Country: US	Telephone #: 601220766	Fax #: 6019227927
Report To (Name): Joseph Drapala		Please Provide Results via: <input type="checkbox"/> Fax <input checked="" type="checkbox"/> Email	
email Address: jdrapala@semsinc.net		Purchase Order Number: 1326-0001	
Client Project ID: 1326-0001		EMSL Project ID (internal use only):	
State or Province Collected: MS		CT only <input type="checkbox"/> Commercial/Taxable <input type="checkbox"/> Residential/Tax Exempt	
EMSL-Bill to: <input type="checkbox"/> Same <input checked="" type="checkbox"/> Different - If bill to is different note instructions in comment. Third party billing requires written authorization from third party			
<b>Turnaround Time (TAT) Options Please Check</b>			
<input type="checkbox"/> 3 Hour	<input type="checkbox"/> 6 Hour	<input type="checkbox"/> 24 Hour	<input type="checkbox"/> 32 Hour* <input checked="" type="checkbox"/> 48 Hour <input checked="" type="checkbox"/> 72 Hour <input type="checkbox"/> 96 Hour <input type="checkbox"/> 1 Week <input type="checkbox"/> 2 Week
<small>*32 Hour TAT available for select tests only; samples must be submitted by 11:30am. Please call ahead for large projects and/or turnaround times 6 hours or less.</small>			
<b>PLM - Bulk (reporting limit)</b>		<b>TEM - Bulk</b>	
<input checked="" type="checkbox"/> PLM EPA 600/R-93/116 (<1%)		<input type="checkbox"/> TEM EPA NOB - EPA 600/R-93/116 Section 2.5.5.1	
<input type="checkbox"/> PLM EPA NOB (<1%)		<input type="checkbox"/> NY ELAP Method 198.4 non-friable - NY	
Point Count <input type="checkbox"/> 400 (<0.25%) <input type="checkbox"/> 1000 (<0.1%)		<input type="checkbox"/> Chatfield Protocol (semi-quantitative)	
Point Count w/Gravimetric <input type="checkbox"/> 400 (<0.25%) <input type="checkbox"/> 1000 (<0.1%)		<input type="checkbox"/> TEM % by Mass - EPA 600/R-93/116 Section 2.5.5.2	
<input type="checkbox"/> NIOSH 9002 (<1%)		<input type="checkbox"/> TEM Qualitative via Filtration Prep Technique	
<input type="checkbox"/> NY ELAP Method 198.1- friable - NY		<input type="checkbox"/> TEM Qualitative via Drop Mount Prep Technique	
<input type="checkbox"/> NY ELAP Method 198.6 NOB- non-friable - NY		<b>Other tests (please specify)</b>	
<input type="checkbox"/> NY ELAP Method 198.8- Vermiculite Surfacing Material		<input type="checkbox"/>	
<input type="checkbox"/> OSHA ID-191 Modified			
<input type="checkbox"/> EMSL Standard Addition Method			
<input type="checkbox"/> Positive Stop - Clearly Identify Homogenous Areas (HA)		Date Sampled: 7-9-20	
Sampler's Name: Joseph Drapala		Sampler's Signature:	
Sample #	HA #	Sample Location	Material Description
		see Attached for sample list	
Client Sample # (s):		Total # of Samples: 46 <sup>(R)</sup>	
Relinquished by (Client):		Date: 7-13-20	Time: 12:00 PM
Received by (Lab):		Date: 7/14/2020	Time: 9:55 AM
<b>Comments/Special Instructions:</b> Bill To: SEMS INC, 11625 South Choctaw Drive, Baton Rouge, LA, 70815, US Attention: Kari Guitreau Phone: 225-924-2002 Email: kguitreau@semsinc.net Purchase Order: 1326-0001			

(R) 7709 4087 6787  
1 of 1

3269



## Chain of Custody Asbestos Lab Services

EMSL Analytical Inc.

18369 Petroleum Drive  
Baton Rouge, LA  
70809  
Phone (225) 755-1920  
Fax (225) 755-1989  
[http:// www.emsl.com](http://www.emsl.com)

Client sample # (s): AR-660-0001 to 0046

Total samples #: 46

Relinquished: Joseph Drapata

Date: 7/13/2020 Time: 1700 FedEx

Received: [Signature]

Date: 7/14/2020 Time: 9:55 AM

Relinquished: \_\_\_\_\_

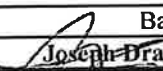
Date: \_\_\_\_\_ Time: \_\_\_\_\_

Received: \_\_\_\_\_

Date: \_\_\_\_\_ Time: \_\_\_\_\_

Sample Number	Sample Description/Location	Volume (if applicable)
AR-660-0001	Wood Grain Patterned Flooring	
AR-660-0002	Wood Grain Patterned Flooring	
AR-660-0003	Base Cove and Mastic	
AR-660-0004	12" Tan Floor Tile	
AR-660-0005	12" Tan Floor Tile	
AR-660-0006	12" Brown Floor Tile	
AR-660-0007	Drywall Mud	
AR-660-0008	Drywall Mud	
AR-660-0009	Perimeter Wall Texture Finish	
AR-660-0010	Perimeter Wall Texture Finish	
AR-660-0011	Drywall Mud	
AR-660-0012	2'x2' Ceiling Panel	
AR-660-0013	HVAC Duct Mastic	
AR-660-0014	HVAC Duct Mastic	
AR-660-0015	12" Sand Patterned Floor Tile	
AR-660-0016	12" Sand Patterned Floor Tile	
AR-660-0017	Base Cove and Mastic	
AR-660-0018	2'x2' Ceiling Panel	
AR-660-0019	Drywall Mud	
AR-660-0020	12" Tan Floor Tile	
AR-660-0021	12" Tan Floor Tile	
AR-660-0022	12" Off-White Floor Tile	
AR-660-0023	12" Off-White Floor Tile	
AR-660-0024	Pipe Joint TSI (old)	
AR-660-0025	Pipe Insulation with joint compound	
AR-660-0026	2'x2' Ceiling Panel	
AR-660-0027	12" Sand Patterned Floor Tile	
AR-660-0028	12" Sand Patterned Floor Tile	
AR-660-0029	12" Gray Floor Tile	
AR-660-0030	12" Gray Floor Tile	

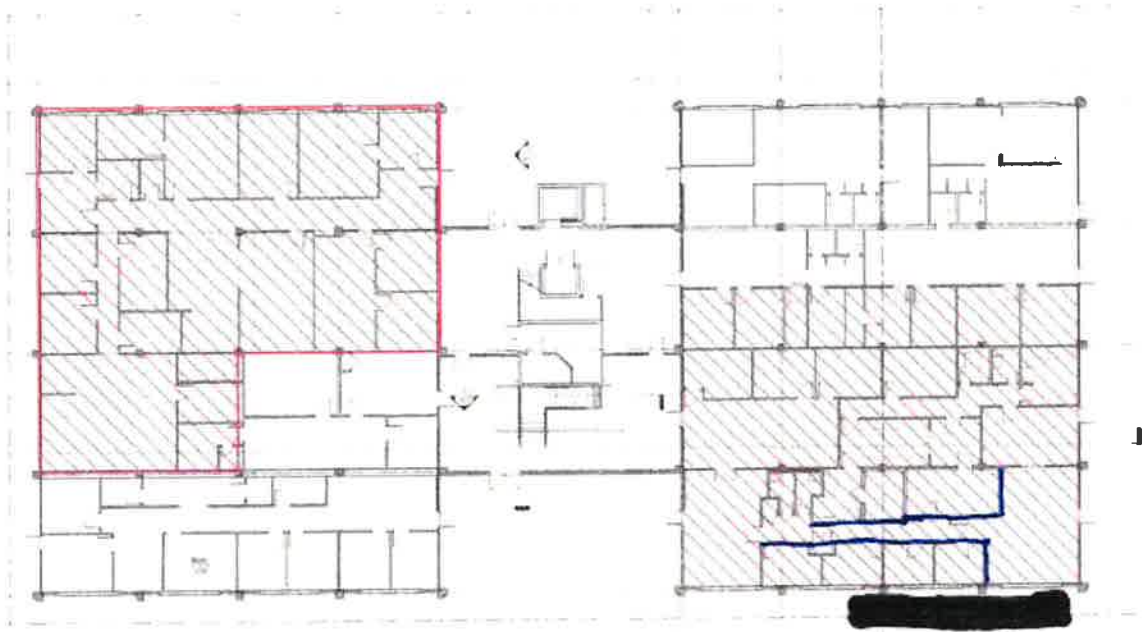
3269

Sample Number	Sample Description/Location	Volume (if applicable)
AR-660-0031	Pipe Joint TSI (old)	
AR-660-0032	Pipe Joint TSI (old)	
AR-660-0033	Drywall Mud	
AR-660-0034	2'x2' Ceiling Panel	
AR-660-0035	Perimeter Wall Texture Finish	
AR-660-0036	Drywall Mud	
AR-660-0037	12" Brown Floor Tile	
AR-660-0038	12" Sand Patterned Floor Tile	
AR-660-0039	Drywall Mud	
AR-660-0040	Base Cove and Mastic	
AR-660-0041	2'x2' Ceiling Panel	
AR-660-0042	Drywall Mud	
AR-660-0043	Drywall Mud	
AR-660-0044	12" Sand Patterned Floor Tile	
AR-660-0045	Drywall Mud	
AR-660-0046	Base Cove and Mastic	
Relinquished:  Joseph Drapala Date: 7/13/2020 Time: 1700 FedEx		

Page 3







Areas with asbestos containing joint compound









## Inspection/ Testing (ACM, Lead and Mold)

### Job Site Location

<b>Project Name</b>	North building- ACM SURVEY
<b>Client Name</b>	Probity Contracting Group
<b>Site Address</b>	660 North Street  32.306078, -90.177169
<b>City, State Zip</b>	Jackson MS  32.306092, -90.177181
<b>Date/Time of Visit</b>	08-26-2024

### Inspector Info with Chain of Custody

<b>Pearson Environmental Services Representative Name</b>	Chris Pearson
<b>Date of Visit</b>	08-26-2024

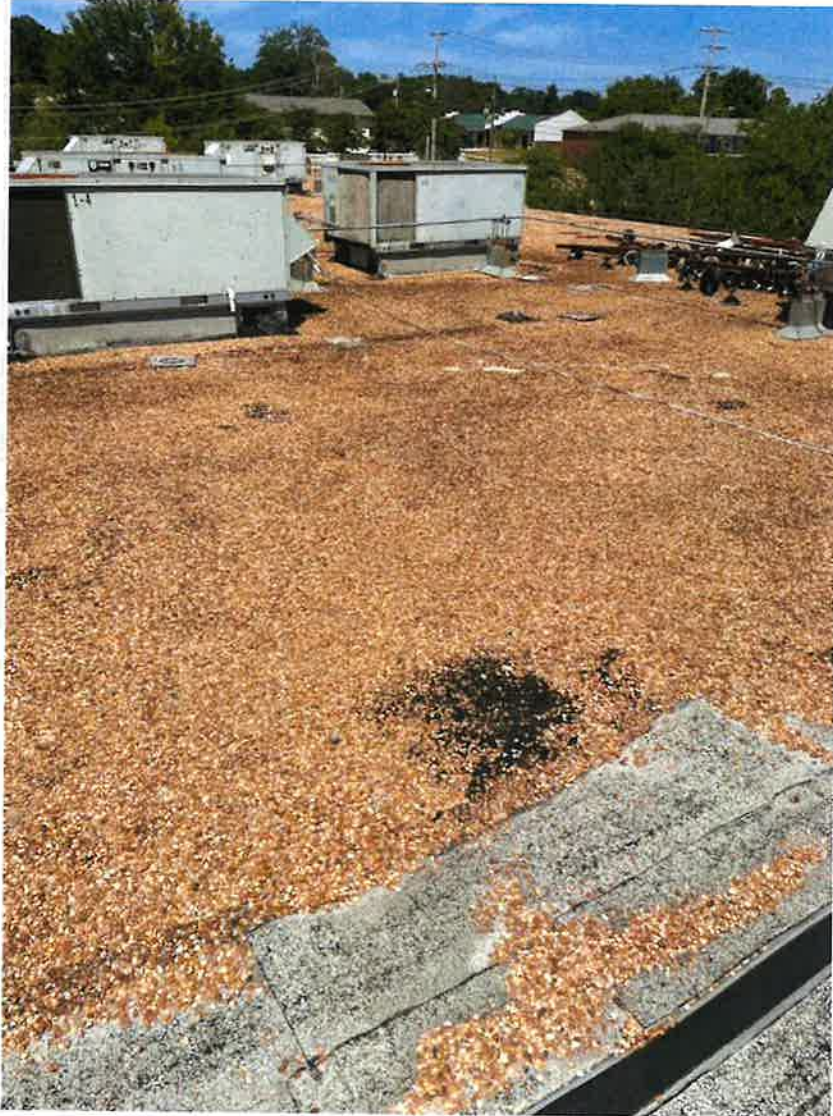
### Sample Log

---



## Inspection/ Testing (ACM, Lead and Mold)

### Sample Photo



<b>Sample ID</b>	660-03
<b>Sample type</b>	Suspect ACM
<b>Sample Condition</b>	Non-friable
<b>Sample Description/ Location</b>	North side built up roof core

### [Sample Log \(1\)](#)

---



## Inspection/ Testing (ACM, Lead and Mold)

Sample Photo



<b>Sample ID</b>	660-04
<b>Sample type</b>	Suspect ACM
<b>Sample Condition</b>	Non-friable
<b>Sample Description/ Location</b>	N. Side roof penetration

### [Sample Log \(2\)](#)



## Inspection/ Testing (ACM, Lead and Mold)

### Sample Photo



<b>Sample ID</b>	660-05
<b>Sample type</b>	Suspect ACM
<b>Sample Condition</b>	Non-friable
<b>Sample Description/ Location</b>	S. Side roof core- built up roof

### [Sample Log \(3\)](#)



## Inspection/ Testing (ACM, Lead and Mold)

Sample Photo



<b>Sample ID</b>	660-06
<b>Sample type</b>	Suspect ACM
<b>Sample Condition</b>	Non-friable
<b>Sample Description/ Location</b>	Middle roll on roof core

### [Sample Log \(4\)](#)



## Inspection/ Testing (ACM, Lead and Mold)

### Sample Photo



<b>Sample ID</b>	660-07
<b>Sample type</b>	Suspect ACM
<b>Sample Condition</b>	Non-friable
<b>Sample Description/ Location</b>	S. side roof penetration sample

### [Sample Log \(5\)](#)





## Inspection/ Testing (ACM, Lead and Mold)

Sample Photo





## Inspection/ Testing (ACM, Lead and Mold)



<b>Sample ID</b>	660-08
<b>Sample type</b>	Suspect ACM
<b>Sample Condition</b>	Non-friable
<b>Sample Description/ Location</b>	Exterior window caulking

### [Sample Log \(6\)](#)

---



## Inspection/ Testing (ACM, Lead and Mold)

Sample Photo





## Inspection/ Testing (ACM, Lead and Mold)



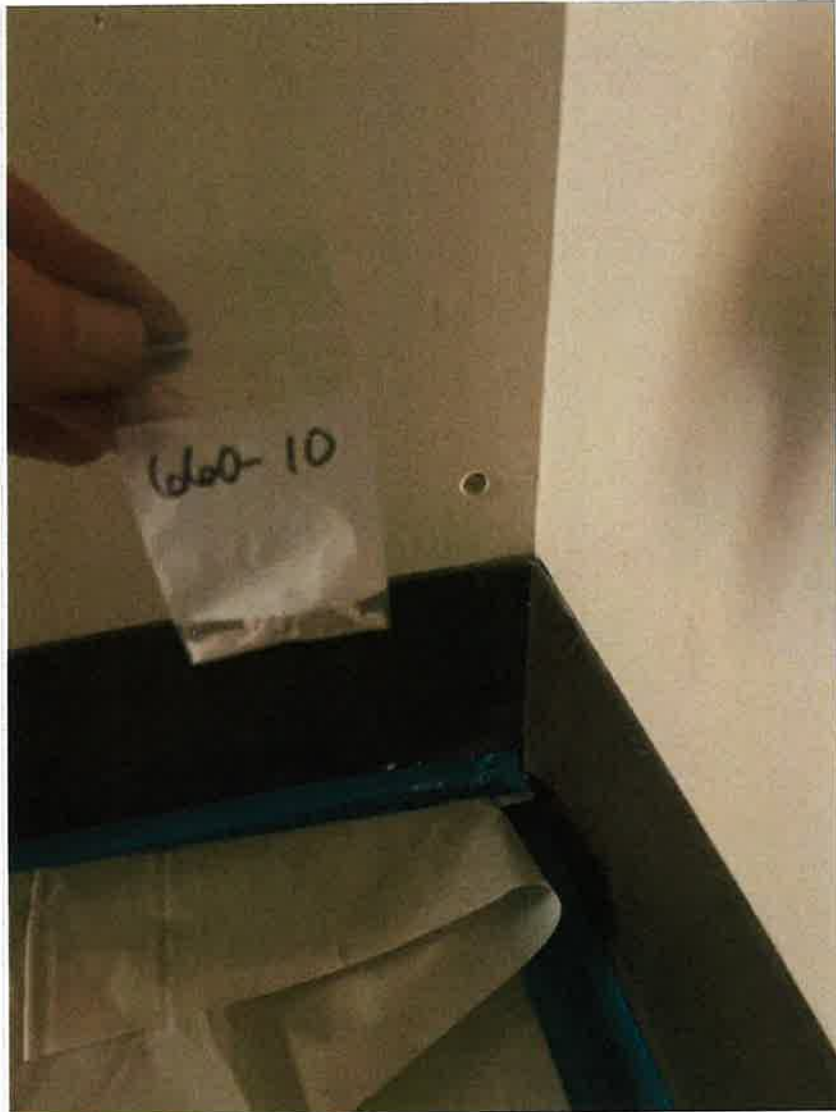
Sample ID	Sample 660-09
Sample type	660-09
Sample Condition	Suspect ACM
Sample Description/ Location	Friable
	Sheetrock and joint compound in North side of building in containment area

### [Sample Log \(7\)](#)



## Inspection/ Testing (ACM, Lead and Mold)

Sample Photo





## Inspection/ Testing (ACM, Lead and Mold)



<b>Sample ID</b>	660-10
<b>Sample type</b>	Suspect ACM
<b>Sample Condition</b>	Friable
<b>Sample Description/ Location</b>	Sheetrock and joint compound in N. Side containment area

### [Sample Log \(8\)](#)

---



## Inspection/ Testing (ACM, Lead and Mold)

Sample Photo



Sample ID	660-11
Sample type	Suspect ACM
Sample Condition	Friable
Sample Description/ Location	Sheetrock and joint compound

## Interior Photos

---



## Inspection/ Testing (ACM, Lead and Mold)

### Photos







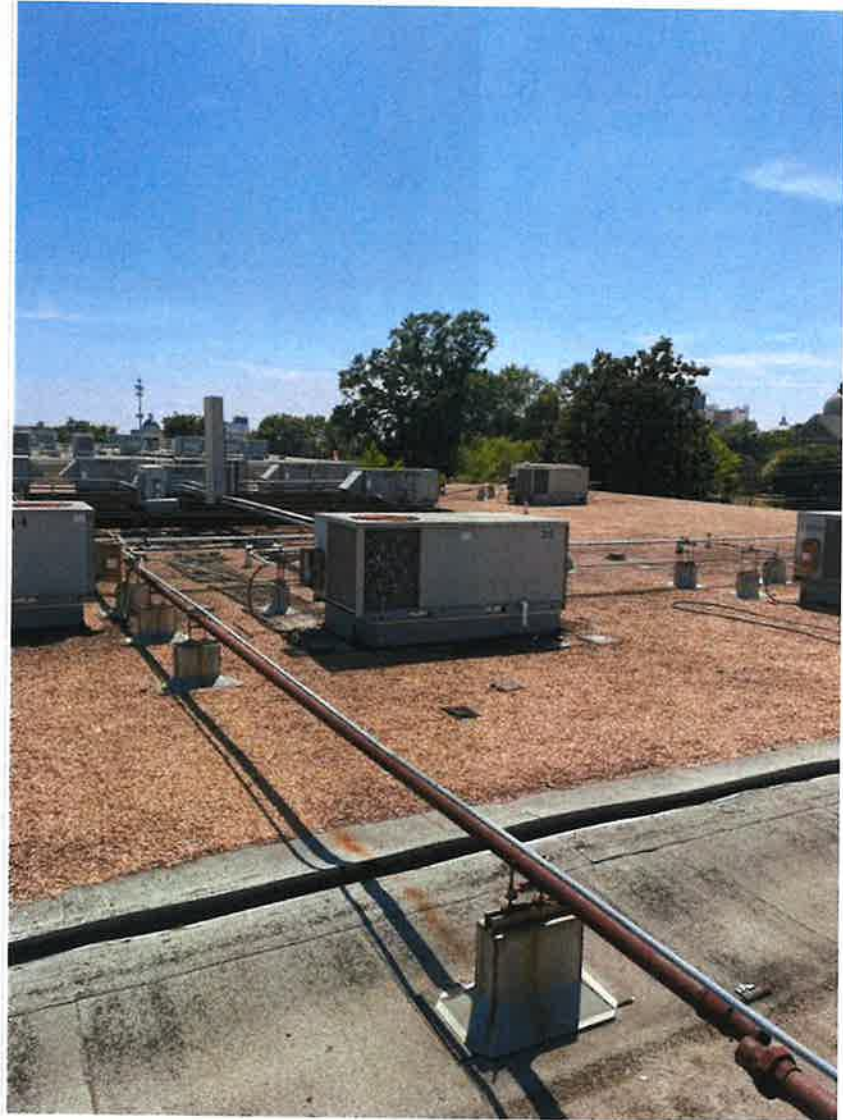
## Inspection/ Testing (ACM, Lead and Mold)





Date Submitted: 08-27-2024 11:01 AM  
Submitted By: pearsonenvironmental@gmail.com

## Inspection/ Testing (ACM, Lead and Mold)





## Inspection/ Testing (ACM, Lead and Mold)





Date Submitted: 08-27-2024 11:01 AM  
Submitted By: pearsonenvironmental@gmail.com

## Inspection/ Testing (ACM, Lead and Mold)





## Inspection/ Testing (ACM, Lead and Mold)



Exterior window glazing- rubber- non suspect



## Inspection/ Testing (ACM, Lead and Mold)

### Form Locations



Report for:

**Chris Pearson**  
**Pearson Environmental**  
130 Southpointe Dr. Ste J  
Byram, MS 39272

---

Regarding: Eurofins J3 Resources, Inc.  
Project: 600 North Building - Jackson Mississippi  
EML ID: 3760446

Approved by:



Business Unit Manager  
Scott Ward

REVISED REPORT

Dates of Analysis:  
Asbestos PLM: 08-27-2024

Service SOPs: Asbestos PLM (EPA 40CFR App E to Sub E of Part 763 & EPA METHOD 600/R-93-116, SOP EM-AS-S-1267)  
NVLAP Lab Code 200525-0

---

All samples were received in acceptable condition unless noted in the Report Comments portion in the body of the report. The results relate only to the samples as received and tested. The results include an inherent uncertainty of measurement associated with estimating percentages by polarized light microscopy. Measurement uncertainty data for sample results with >1% asbestos concentration can be provided when requested.

Eurofins J3 Resources, Inc. ("the Company"), a member of the Eurofins Built Environment Testing group of companies, shall have no liability to the client or the client's customer with respect to decisions or recommendations made, actions taken or courses of conduct implemented by either the client or the client's customer as a result of or based upon the Test Results. In no event shall the Company be liable to the client with respect to the Test Results except for the Company's own willful misconduct or gross negligence nor shall the Company be liable for incidental or consequential damages or lost profits or revenues to the fullest extent such liability may be disclaimed by law, even if the Company has been advised of the possibility of such damages, lost profits or lost revenues. In no event shall the Company's liability with respect to the Test Results exceed the amount paid to the Company by the client therefor.

Client: Pearson Environmental  
 C/O: Chris Pearson  
 Re: 600 North Building - Jackson Mississippi

Date of Receipt: 08-27-2024  
 Date of Report: 08-27-2024

**ASBESTOS PLM REPORT**

<b>Total Samples Submitted:</b>	9
<b>Total Samples Analyzed:</b>	9
<b>Total Samples with Layer Asbestos Content &gt; 1%:</b>	3

**Location: 660-03**

Lab ID-Version‡: 18528026-1

Sample Layers	Asbestos Content
Black Roofing Material	ND
<b>Composite Non-Asbestos Content:</b>	25% Glass Fibers
<b>Sample Composite Homogeneity:</b>	Good

**Location: 660-04**

Lab ID-Version‡: 18528027-1

Sample Layers	Asbestos Content
Black Roofing Material	ND
<b>Sample Composite Homogeneity:</b>	Good

**Location: 660-05**

Lab ID-Version‡: 18528028-1

Sample Layers	Asbestos Content
Black Roofing Shingle	ND
Black Roofing Felt	ND
<b>Composite Non-Asbestos Content:</b>	25% Glass Fibers
<b>Sample Composite Homogeneity:</b>	Good

The test report shall not be reproduced except in full, without written approval of the laboratory. The report must not be used by the client to claim product certification, approval, or endorsement by NVLAP, NIST, or any agency of the federal government. The Company reserves the right to dispose of all samples after a period of thirty (30) days, according to all state and federal guidelines, unless otherwise specified.

All components not quantified as asbestos content and non-asbestos content are considered to be non-fibrous matrix components. Matrix components may include, but are not limited to, gypsum, paint, silicate minerals, vinyl, binder, calcium carbonate, tar, and foam.

Inhomogeneous samples are separated into homogeneous subsamples and analyzed individually. ND means no fibers were detected. When detected, the minimum detection and reporting limit is less than 1% unless point counting is performed. Floor tile samples may contain large amounts of interference material and it is recommended that the sample be analyzed by gravimetric point count analysis to lower the detection limit and to aid in asbestos identification.

‡ A "Version" indicated by "-x" after the Lab ID# with a value greater than 1 indicates a sample with amended data. The revision number is reflected by the value of "x". This report replaces the previous report released on August 27, 2024.



Client: Pearson Environmental  
 C/O: Chris Pearson  
 Re: 600 North Building - Jackson Mississippi

Date of Receipt: 08-27-2024  
 Date of Report: 08-27-2024

**ASBESTOS PLM REPORT**

**Location: 660-06**

Lab ID-Version‡: 18528029-1

Sample Layers	Asbestos Content
Black Roofing Shingle	ND
Black Roofing Felt	ND
<b>Composite Non-Asbestos Content:</b>	25% Glass Fibers 5% Synthetic Fibers
<b>Sample Composite Homogeneity:</b>	Good

**Location: 660-07**

Lab ID-Version‡: 18528030-1

Sample Layers	Asbestos Content
Black Roofing Shingle	ND
Black Roofing Felt	ND
<b>Composite Non-Asbestos Content:</b>	25% Glass Fibers 5% Synthetic Fibers
<b>Sample Composite Homogeneity:</b>	Good

**Location: 660-08**

Lab ID-Version‡: 18528031-1

Sample Layers	Asbestos Content
Beige Caulk	5% Chrysotile
<b>Composite Non-Asbestos Content:</b>	40% Cellulose
<b>Sample Composite Homogeneity:</b>	Good

The test report shall not be reproduced except in full, without written approval of the laboratory. The report must not be used by the client to claim product certification, approval, or endorsement by NVLAP, NIST, or any agency of the federal government. The Company reserves the right to dispose of all samples after a period of thirty (30) days, according to all state and federal guidelines, unless otherwise specified.

All components not quantified as asbestos content and non-asbestos content are considered to be non-fibrous matrix components. Matrix components may include, but are not limited to, gypsum, paint, silicate minerals, vinyl, binder, calcium carbonate, tar, and foam.

Inhomogeneous samples are separated into homogeneous subsamples and analyzed individually. ND means no fibers were detected. When detected, the minimum detection and reporting limit is less than 1% unless point counting is performed. Floor tile samples may contain large amounts of interference material and it is recommended that the sample be analyzed by gravimetric point count analysis to lower the detection limit and to aid in asbestos identification.

‡ A "Version" indicated by "-x" after the Lab ID# with a value greater than 1 indicates a sample with amended data. The revision number is reflected by the value of "x". This report replaces the previous report released on August 27, 2024.

Client: Pearson Environmental  
 C/O: Chris Pearson  
 Re: 600 North Building - Jackson Mississippi

Date of Receipt: 08-27-2024  
 Date of Report: 08-27-2024

**ASBESTOS PLM REPORT**

**Location: 660-09**

Lab ID-Version‡: 18528032-2

Sample Layers	Asbestos Content
White Joint Compound	2% Chrysotile
White Drywall	ND
<b>Composite Asbestos Fibrous Content:</b>	< 1% Asbestos
<b>Composite Non-Asbestos Content:</b>	10% Cellulose
<b>Sample Composite Homogeneity:</b>	Good

**Location: 660-10**

Lab ID-Version‡: 18528033-2

Sample Layers	Asbestos Content
White Joint Compound	2% Chrysotile
White Drywall	ND
<b>Composite Asbestos Fibrous Content:</b>	< 1% Asbestos
<b>Composite Non-Asbestos Content:</b>	10% Cellulose
<b>Sample Composite Homogeneity:</b>	Good

**Location: 660-11**

Lab ID-Version‡: 18528034-1

Sample Layers	Asbestos Content
White Joint Compound	ND
Brown/White Drywall	ND
<b>Composite Non-Asbestos Content:</b>	10% Cellulose < 1% Glass Fibers
<b>Sample Composite Homogeneity:</b>	Good

The test report shall not be reproduced except in full, without written approval of the laboratory. The report must not be used by the client to claim product certification, approval, or endorsement by NVLAP, NIST, or any agency of the federal government. The Company reserves the right to dispose of all samples after a period of thirty (30) days, according to all state and federal guidelines, unless otherwise specified.

All components not quantified as asbestos content and non-asbestos content are considered to be non-fibrous matrix components. Matrix components may include, but are not limited to, gypsum, paint, silicate minerals, vinyl, binder, calcium carbonate, tar, and foam.

Inhomogeneous samples are separated into homogeneous subsamples and analyzed individually. ND means no fibers were detected. When detected, the minimum detection and reporting limit is less than 1% unless point counting is performed. Floor tile samples may contain large amounts of interference material and it is recommended that the sample be analyzed by gravimetric point count analysis to lower the detection limit and to aid in asbestos identification.

‡ A "Version" indicated by "-x" after the Lab ID# with a value greater than 1 indicates a sample with amended data. The revision number is reflected by the value of "x". This report replaces the previous report released on August 27, 2024.

**Eurofins J3 Resources, Inc.**  
6110 West 34th Street, Houston, TX 77092  
713-290-0221 www.eurofinsus.com/Built

Client: Pearson Environmental  
C/O: Chris Pearson  
Re: 600 North Building - Jackson Mississippi

Date of Receipt: 08-27-2024  
Date of Report: 08-27-2024

---

**SUMMARY OF REVISIONS**

---

**Location:** 660-09 Lab ID-Version‡: 18528032-2

**Revision Report Date:** 08-27-2024

Analysis Time revised. Composite Asbestos Fibrous Content revised.

**Location:** 660-10 Lab ID-Version‡: 18528033-2

**Revision Report Date:** 08-27-2024

Analysis Time revised. Composite Asbestos Fibrous Content revised.

‡ A "Version" indicated by "-x" after the Lab ID# with a value greater than 1 indicates a sample with amended data. The revision number is reflected by the value of "x". This report replaces the previous report released on August 27, 2024.

