



**US Army Corps
of Engineers**

Vicksburg District
4155 Clay Street
Vicksburg, MS 39183-3435
www.mvk.usace.army.mil

Public Notice

APPLICATION NO.:	<u>MVK-2009-198</u>
EVALUATOR:	<u>Ms. Hayleigh B Rogers</u>
PHONE NO.:	<u>(601) 631-5996</u>
E-MAIL:	<u>Hayleigh.B.Rogers@usace.army.mil</u>
DATE:	<u>November 7, 2024</u>
EXPIRATION DATE:	<u>December 9, 2024</u>

Interested parties are hereby notified that the U.S. Army Corps of Engineers, Vicksburg District, is considering a proposal to incorporate an instrument modification to the existing Ducks Unlimited Mississippi Delta In-Lieu Fee Program located in Issaquena and Sharkey Counties, Mississippi. A draft instrument addendum describing the proposed sites known as the Yazoo Backwater Preserve Project (YBPP) has been received from Ducks Unlimited, Inc. (project sponsor). The YBPP locations are located in Issaquena and Sharkey Counties, Mississippi (attached).

Description: This draft instrument modification is being proposed by the in-lieu fee sponsor as a means to meet the requirements for compensatory mitigation within their Mississippi Delta In-Lieu Fee Program service area. This proposal will have the capacity to produce an equivalent 27,897 Average Annual Functional Capacity Units (AACFU) or 25,396 Charleston Method Wetland Credits.

The Sponsor has developed a draft instrument modification to the Ducks Unlimited Mississippi Delta In-Lieu Fee Program. This proposed modification would include additional tracts collectively identified as the Yazoo Backwater Preserve Project, located in Issaquena and Sharkey Counties, MS. The modification would encompass 33 sites totaling approximately 6,200 acres with the goal of preservation, reestablishment restoration and enhancement of bottomland hardwood wetlands. The proposed mitigation activities would increase wetland functions, provide species diversity and habitat, improve flood attenuation capacity and increase the spawning fish habitat to areas that are connected to rivers which experience seasonal backwater flooding within the Yazoo River Backwater Area.

Baseline Conditions / Current Land Use / Proposed Actions: The locations encompassing the approximately 6,200 acres are primarily located within the U.S. Army Corps of Engineers Yazoo Backwater Area Management Project 2- and 5-

year floodplain elevations (<https://www.mvk.usace.army.mil/Missions/Programs-and-Project-Management/Yazoo-Backwater/>). This existing land use is primarily agricultural and recreational hunting use.

Dominant habitat types associated with the jurisdictional wetlands on the sites consist of farmed wetlands, forested wetlands, shrub-scrub wetlands, and herbaceous wetlands. Dominant species identified in the proposed areas include: agricultural crops (corn and soybeans), bitternut hickory (*Carya cordiformis*), dwarf palmetto (*Sabal minor*), green ash (*Fraxinus pennsylvanica*), poison ivy (*Toxicodendron radicans*), nuttall oak (*Quercus texana*), soft rush (*Juncus effusus*), and common buttonbush (*Cephalanthus occidentalis*).

The property contains the following soil series classified as hydric or partially hydric: Bowdre, Commerce, Dowling, Mhoon, Sharkey, Alligator, Tunica, and Forestdale.

Service Area: This draft instrument addendum will be established to provide mitigation to compensate for impacts to wetlands associated with the hydrologic unit code 08060208 within the Yazoo River Basin. Decisions authorizing the use of AAFCUs or credits from the YBPP would be made by the appropriate authority on a case-by-case basis, in accordance with all applicable requirements.

The proposed instrument modification, which outlines the conceptual plan for the bank, is available at the following website:

<https://www.mvk.usace.army.mil/Missions/Regulatory/Public-Notices/>

Comments on this proposed instrument modification may be provided to the Corps at the address below. Comments should be received no later than the expiration date of this public notice.

Please provide comments to:

U.S. Army Corps of Engineers
Vicksburg District
Attention: CEMVK-RD, H. Rogers
4155 Clay Street
Vicksburg, Mississippi 39183-3485

Kristina W. Hall
Chief, Regulatory Division

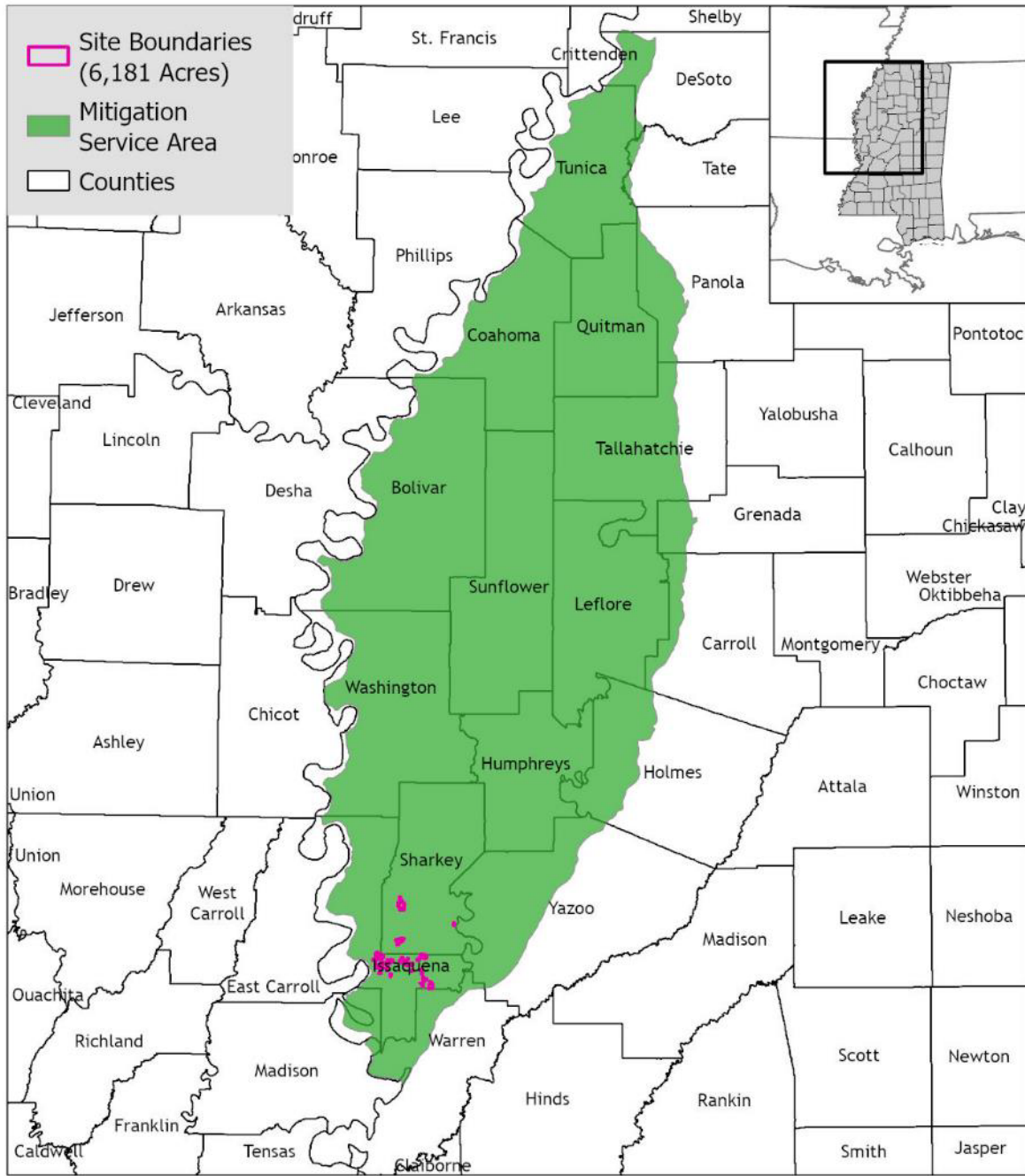


Figure 3. Service Area.

The Mississippi Delta (ILF) Service Area is shown in green and Project Sites in pink.

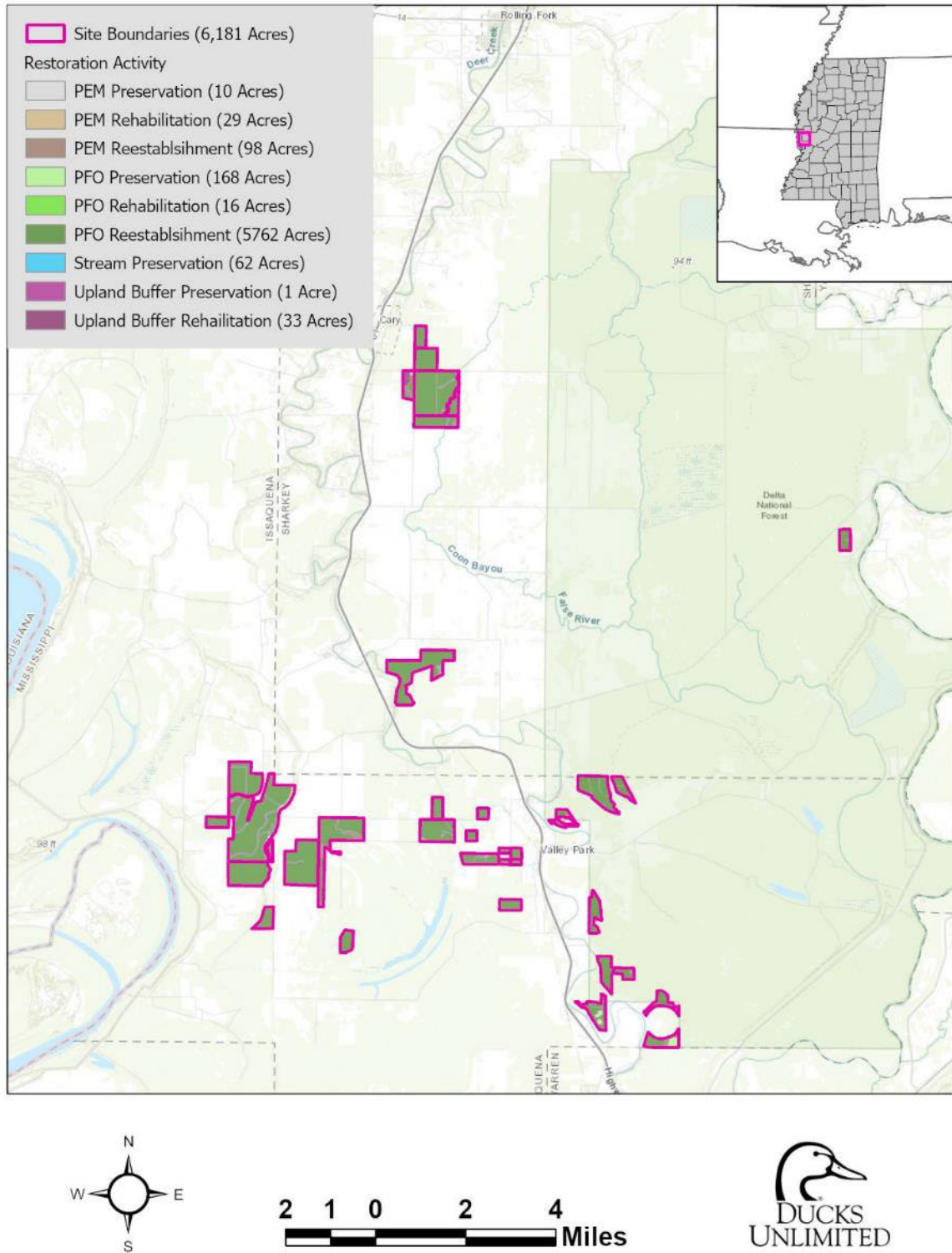


Figure 15. Restoration Activity Map.

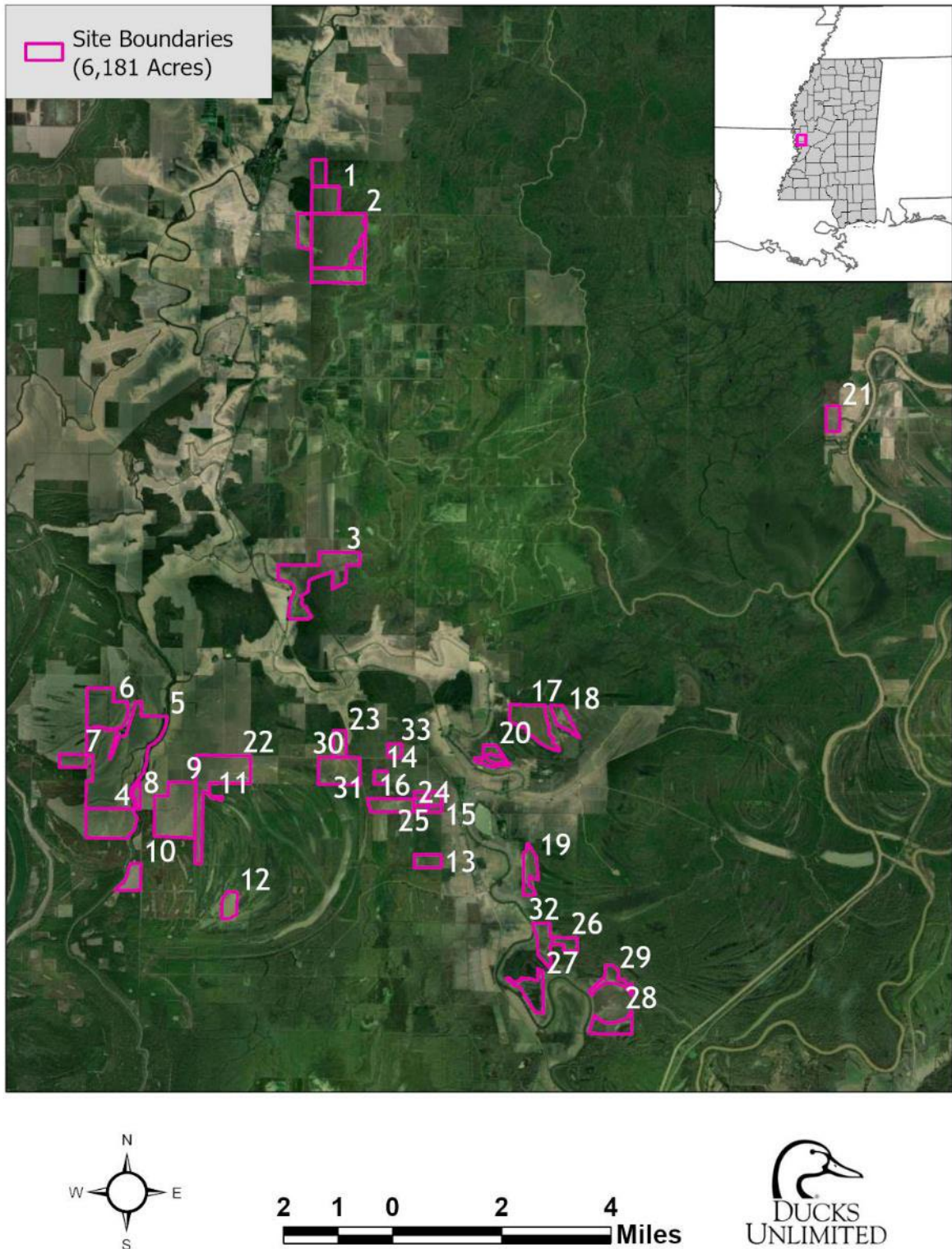


Figure 4. Map of Mitigation Sites.

Pink polygons show the mitigation project sites where landowners have expressed interest in participating in the project.

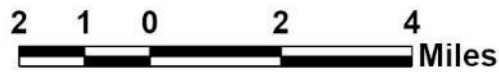
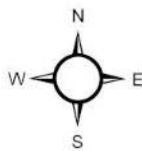
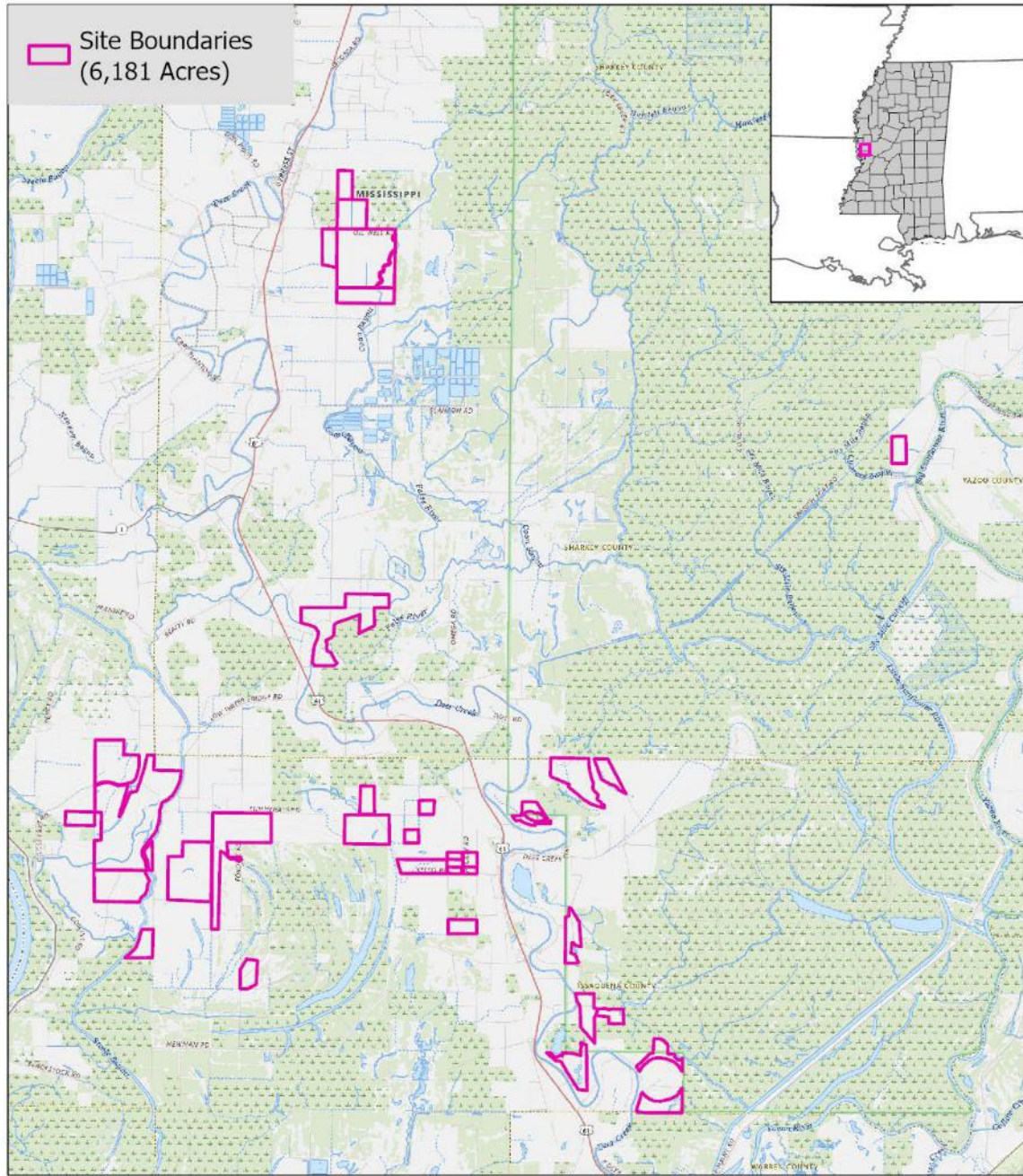


Figure 12. USGS Topographic Map.