



August 08, 2025

Chief, Environmental Permits Division
Mississippi Department of Environmental Quality
Office of Pollution Control
P.O. Box 2262
Jackson, MS 39225

RE: Notice of Major Modification
Lan Farms LLC
Lan Farms Gravel Mine
Copiah County, MS
MSR 322844

Chief, Environmental Permits Division

On behalf of Lan Farms, LLC, FC&E Engineering, LLC (FC&E) is submitting the enclosed Major Modification Form for an 18.0-acre expansion of the surface mine located off Dees Road in Crystal Springs, MS. The

Modification will consist of including 18 acres of land that is considered to be a Grandfathered Area. Lan Farms LLC wants to include this area for storm water coverage and to expand two small ponds in this area to use for the rinsing of gravel. This is not a typical gravel washing operation. The process will consist of using a dry screening plant to shake all the dirt & sand out first and then use water to rinse the gravel off. There will be no washing of sand in this process. The design for the dams are attached to the Storm Water Pollution Prevention Plan (SWPPP). If you have any questions or require additional information, please do not hesitate to contact me at (601)517-6748 or dsanford@fce-engineering.com.

Sincerely,



FC&E Engineering, LLC

David Sanford

AI: 76272

Rec'd via email:
08/09/2025

MAJOR MODIFICATION FORM FOR MINING GENERAL PERMIT

Coverage No. MSR32 2 8 4 4 County COPIAH



INSTRUCTIONS

Coverage recipients shall notify the Mississippi Department of Environmental Quality of plans to expand the acreage or "footprint" of an existing mining activity or modify the existing mining operation. This form must be submitted when (check all that apply):

- ☐ SWPPP details have been developed and are ready for MDEQ review for subsequent phases of an existing, covered mining activity
- ☒ "Footprint" identified in the original MNOI is proposed to be enlarged (a modified SWPPP and an updated USGS topographic map must be submitted)
- ☐ Mine dewatering is proposed ☐ Mine dewatering has been discontinued
- ☒ Closed loop wash operations are proposed ☐ Closed loop wash operations have been discontinued

This form must be signed by the original coverage recipient under Mississippi's Mining General Permit. A different operator must have general permit coverage transferred prior to coverage being modified. Coverage recipients are authorized to discharge storm water associated with proposed expansions of dewater pits or operate a recirculation system with no discharge, under the conditions of the General Permit, only upon receipt of written notification of approval by the MDEQ. If mining activities change which will incorporate a hydraulic dredging operation or a discharge of process wastewaters to State waters additional permitting actions shall be required.

COVERAGE RECIPIENT INFORMATION

COVERAGE RECIPIENT CONTACT PERSON: HUNTER MCKINLEYCOMPANY NAME: LAN FARMS LLCSTREET OR P.O. BOX: 217 DRAPERSON DR. SUITE 100CITY: RIDGELANDSTATE: MSZIP: 39157PHONE NUMBER : 601-832-1708EMAIL ADDRESS: Hmckinley.lan@gmail.com

PROJECT INFORMATION

FORMER ACREAGE: 17.64ADDITIONAL ACREAGE TO BE DISTURBED: 18TOTAL ACREAGE: 35.64MINE NAME: LAN FARMS GRAVEL MINEGEOLOGY APPLICATION/PERMIT NO. P20-007CITY: CRYSTAL SPRINGSCOUNTY: COPIAH

I certify under penalty of law that this document and all attachments were prepared under my direction or supervision in accordance with a system designed to assure that qualified personnel properly gathered and evaluated the information submitted. Based on my inquiry of the person or persons who manage the system, or those persons directly responsible for gathering the information, the information submitted is, to the best of my knowledge and belief, true, accurate and complete. I am aware that there are significant penalties for submitting false information, including the possibility of fine and imprisonment for knowing violations.

DocuSigned by:

Signature (must be signed by coverage recipient)

8/8/2025

Date

LEE M. NICOLS

Printed Name

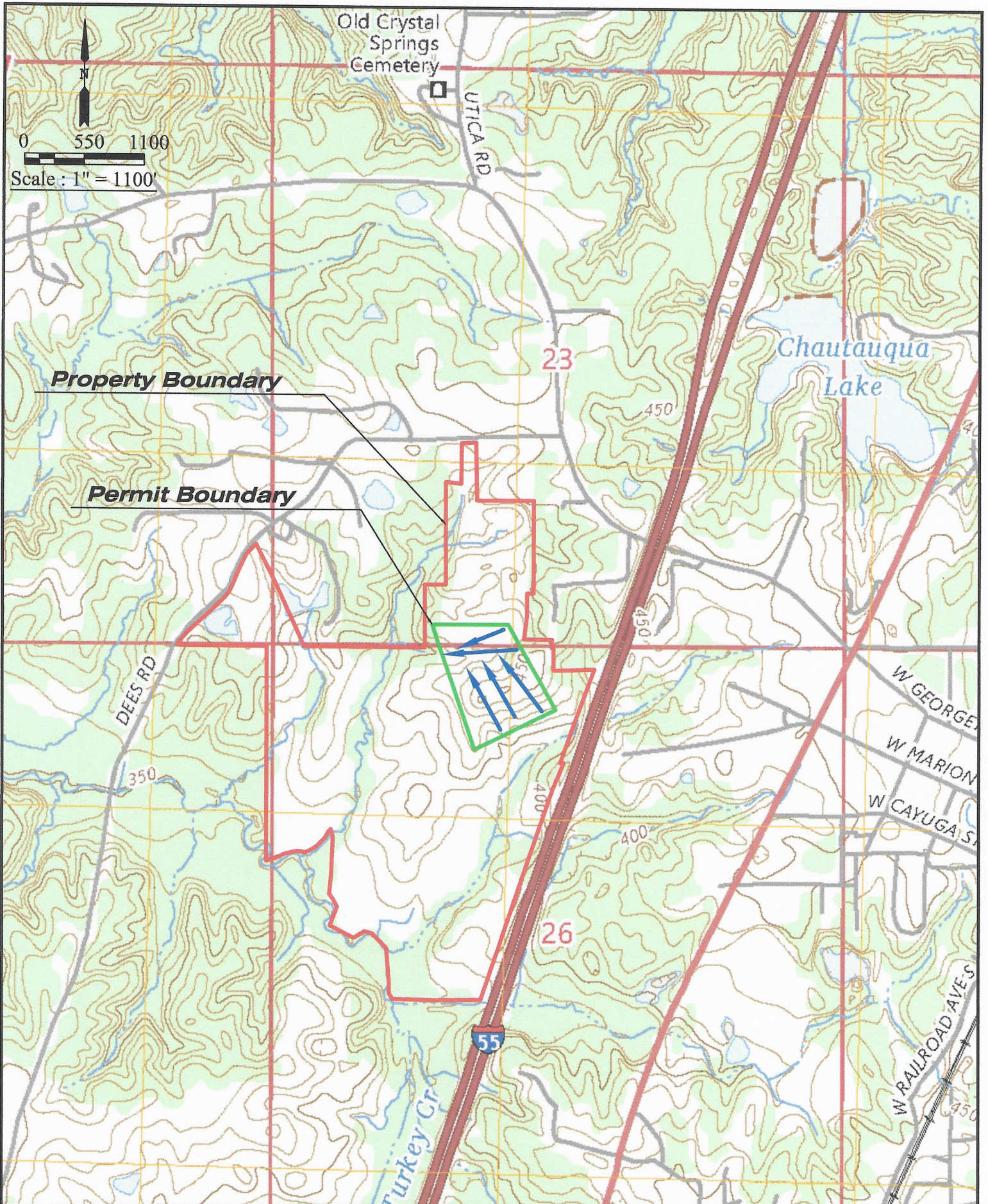
OWNER

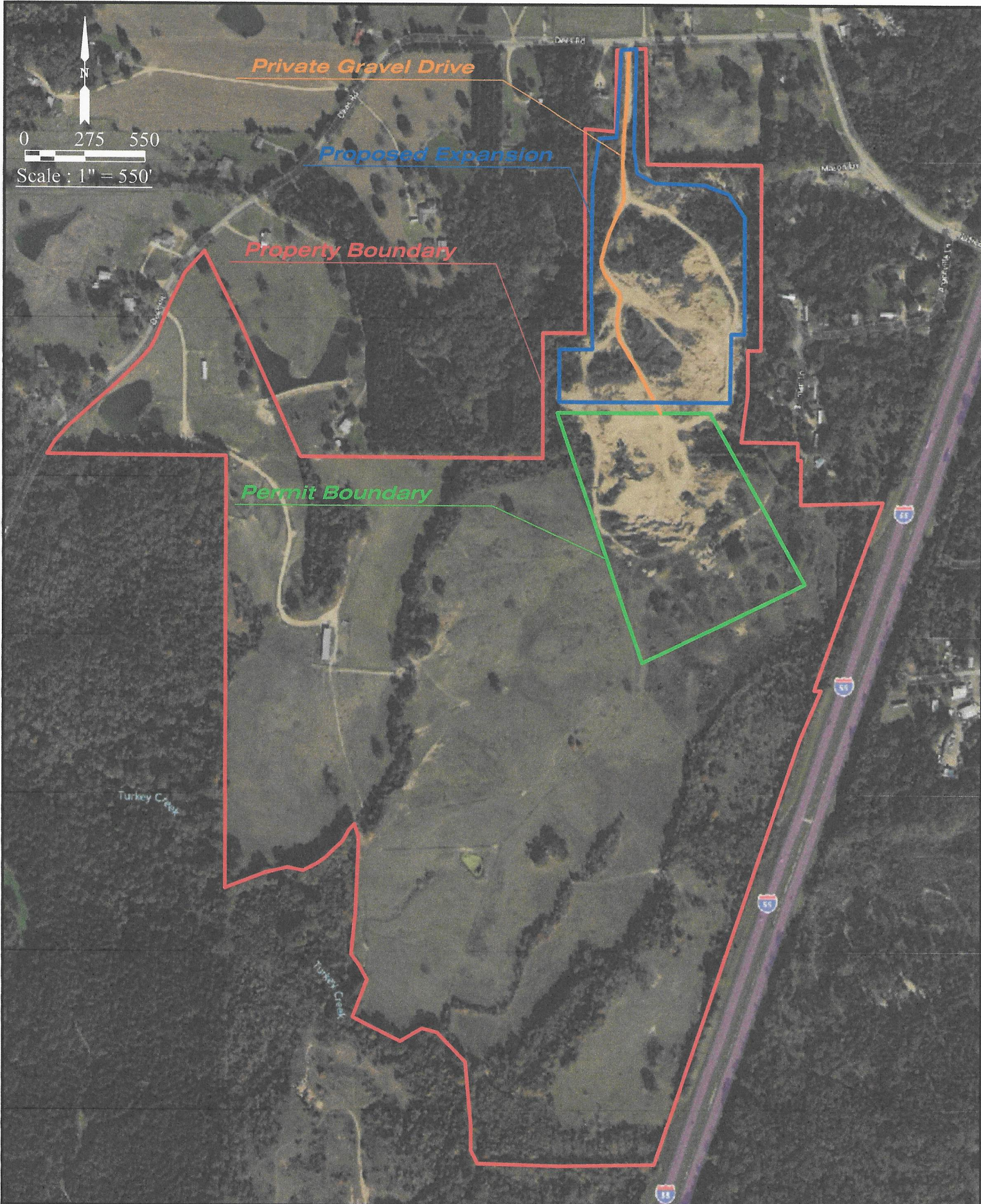
Title

Please submit this form to:

O.C

Chief, Environmental Permits Division
MS Department of Environmental Quality, Office of Pollution Control
P.O. Box 2261
Jackson, Mississippi 39225



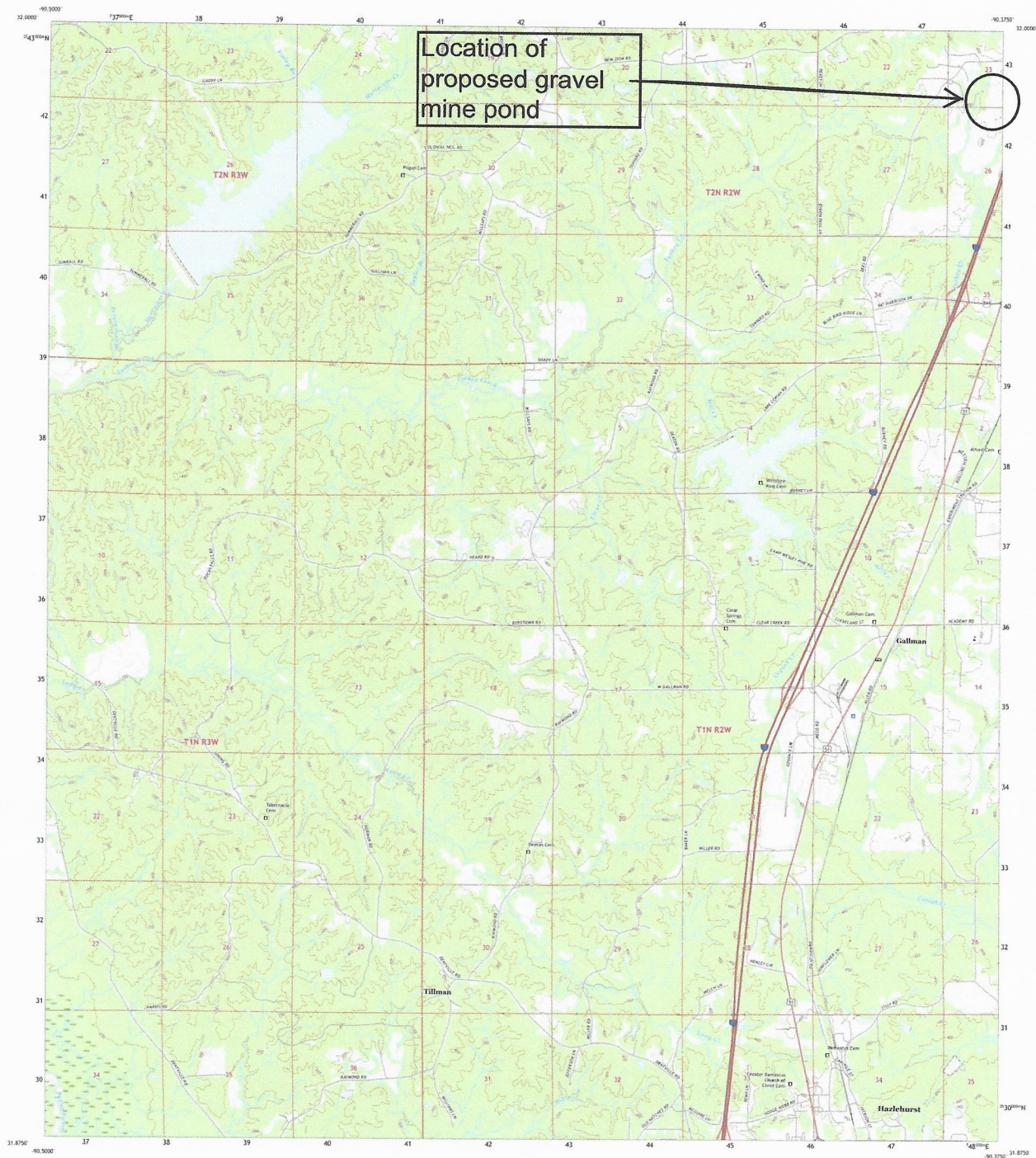




U.S. DEPARTMENT OF THE INTERIOR
U.S. GEOLOGICAL SURVEY



GALLMAN QUADRANGLE
MISSISSIPPI - COPIAH COUNTY
7.5-MINUTE SERIES



Produced by the United States Geological Survey

North American Datum of 1983 (NAD83)

World Geodetic System of 1984 (WGS84)

1:250,000 meter grid Universal Transverse Mercator, Zone 17T

This map is not a legal document. Boundary lines are

generalized for this map scale. Private lands within government

territories may not be shown. Obtain permission before

entering private lands.

Source: NAD83, December 2020

Source: U.S. Census Bureau, 2017

Source: National Hydrographic Survey, 2010

Source: National Elevation Dataset, 2017

Source: Multiple sources, see metadata for details

Source: Public Land Survey System, 1836-1863

Source: Wetlands, 2001 National Wetlands Inventory

Source: Wetlands, 2001 National Wetlands Inventory

Source: Wetlands, 2001 National Wetlands Inventory

Source: Wetlands, 2001 National Wetlands Inventory

Source: Wetlands, 2001 National Wetlands Inventory

Source: Wetlands, 2001 National Wetlands Inventory

Source: Wetlands, 2001 National Wetlands Inventory

Source: Wetlands, 2001 National Wetlands Inventory

Source: Wetlands, 2001 National Wetlands Inventory

Source: Wetlands, 2001 National Wetlands Inventory

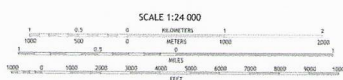
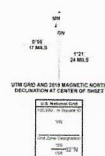
Source: Wetlands, 2001 National Wetlands Inventory

Source: Wetlands, 2001 National Wetlands Inventory

Source: Wetlands, 2001 National Wetlands Inventory

Source: Wetlands, 2001 National Wetlands Inventory

Source: Wetlands, 2001 National Wetlands Inventory



FC&E Engineering, LLC
917 Marquette Road
Brandon, Mississippi
www.fce-engineering.com

Lan Farms
Proposed Gravel Mine
Copiah County, Mississippi

Figure Number: 1
Figure: Project Location Map
Project:
Drawn By: M. Runner
07/14/2025



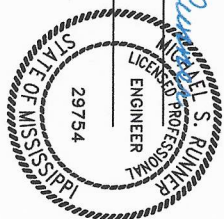
FC&E Engineering, LLC
917 Marquette Road
Brandon, Mississippi
www.fce-engineering.com

Lan Farms, LLC
Proposed Gravel Mine
Cophiah County, Mississippi

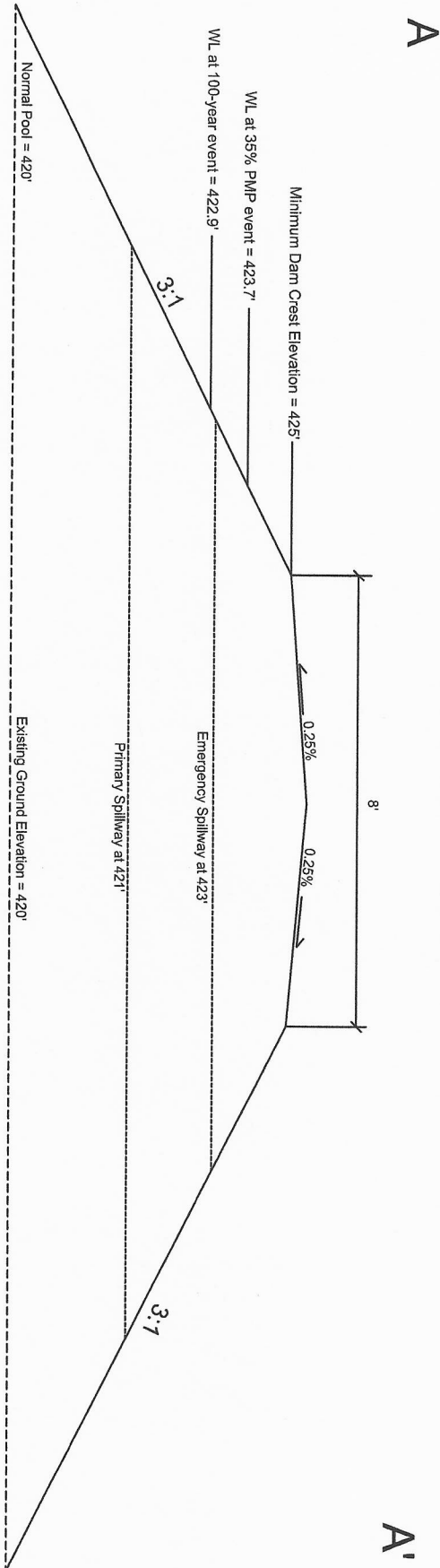
Drawing #:	Figure 4		
Drawing Name:	Levee Location Map		
Project:	Lan Farms, LLC		
Map Source:	Google Earth		
Date Drawn:	7/24/2025	Drawn By:	TM

I, Michael S. Runner, P.E. hereby certify that I am a professional engineer licensed in the state of Mississippi, qualified in civil engineering; that this document was prepared by me or under my supervision, and is in compliance with specifications set forth by the state of Mississippi concerning the design requirements for low hazard dams.

Engineers Signature Michael S. Runner
 Engineers Name Michael S. Runner
 Date: July 28, 2025



Levee #1 Cross Section A - A'



NOTES

1. Topography data obtained from USGS digital elevation and lidar data, and from topographical survey data collected on July 9, 2025.
2. Primary Spillway to be constructed at an elevation of 421 feet.
3. Emergency Spillway to be constructed to an elevation of 423 feet.
4. Typical design slope approximately 3:1

*Side slopes per Mississippi Dam Safety requirements (Rule 3.5.K).
 †Elevation of Emergency Spillway is two feet below minimum crest elevation.



FC&E Engineering, LLC
 917 Marquette Road
 Brandon, Mississippi
www.fce-engineering.com

Lan Farms, LLC
 Proposed Gravel Mine
 Copiah County, Mississippi

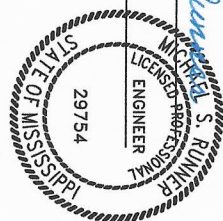
Figure Number: 2
 Figure Name: Levee #1
 Project: Proposed Gravel Mine
 Drawn By: TM
 Date Drawn: 7/17/2025

I, Michael S. Runner, P.E. hereby certify that I am a professional engineer licensed in the state of Mississippi, qualified in civil engineering; that this document was prepared by me or under my supervision, and is in compliance with specifications set forth by the state of Mississippi concerning the design requirements for low hazard dams.

Engineer Signature Michael S. Runner

Engineer Name Michael S Runner

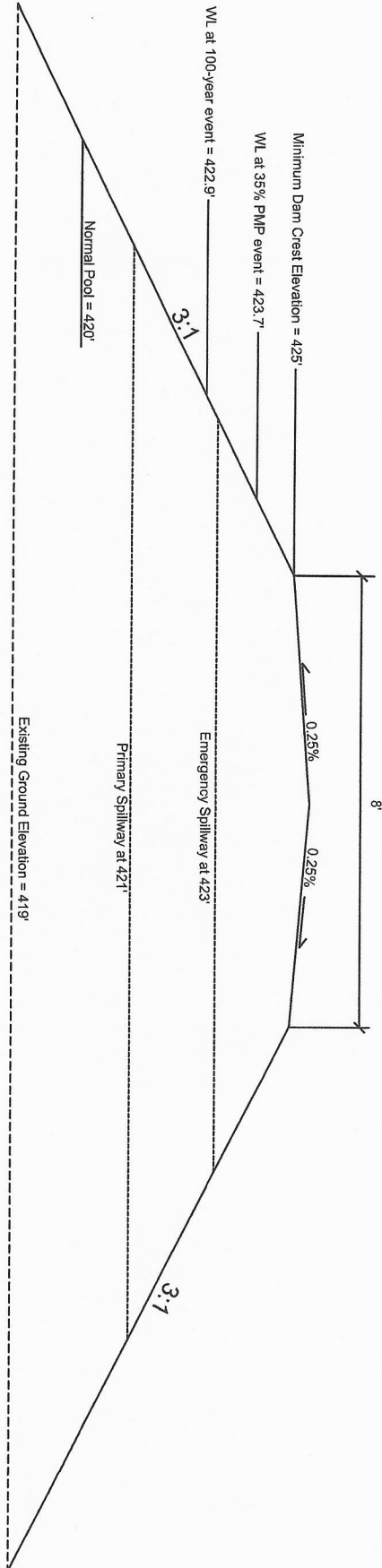
Date July 28, 2025



B

Levee #2 Cross Section B - B'

B'



NOTES

1. Topography data obtained from USGS digital elevation and Lidar data, and from topographical survey data collected on July 9, 2025.
2. Primary Spillway to be constructed at an elevation of 421 feet.
3. Emergency Spillway to be constructed to an elevation of 423 feet.
4. Typical design slope approximately 3:1

*Side slopes per Mississippi Dam Safety requirements (Rule 3.5.K).
*Elevation of Emergency Spillway is two feet below minimum crest elevation.

Lan Farms, LLC
Proposed Gravel Mine
Copiah County, Mississippi

Figure Number: 3
Figure Name: Levee #2
Project: Proposed Gravel Mine
Drawn By: TM
Date Drawn: 7/17/2025



FC&E Engineering, LLC
917 Marquette Road
Brandon, Mississippi
www.fce-engineering.com